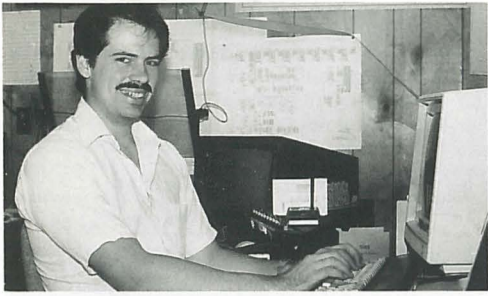


... continued from page three



**Hyrum Sessions, Design Engineer and Programmer**

I don't know how Hyrum looked so cheerfully into the Pentax! The day I visited R. & D. the air conditioning had packed up and there are no windows. After an hour in the department your Editor was looking for the periscope, and after another half hour for the escape hatch.



**Douglas Everett, Electronics Assembly Supervisor and Maxine Armstrong**, who is a 'printed circuit leading lady! Between them Maxine and Douglas have clocked up forty seven years with Electro. As an English gentleman, I am certain most of that time must belong to Douglas.



**Louise Miller**

Not only an engraver, but the very cheerful shop steward. Louise has been with the company for nineteen years.



**Kurt Mudrow**

Kurt came to America from Germany after the war. He has been with Electro for thirty three years. He is stamping out an aluminium channel which will become a "Channel Mount" the very neat distribution trunkings that Electro offer.

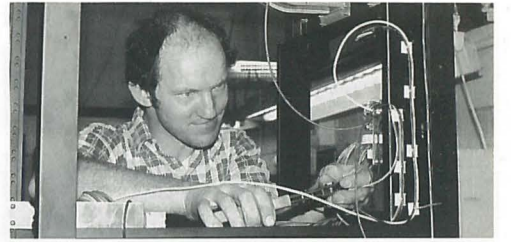


**Byron Stout, Systems Designer for West Coast projects**

Byron has been thirty two years with the company. Incidentally, the company has an interesting sales organisation. There are four Regional Sales Managers, and four Assistant Regional Sales Managers, each of whom has a systems designer who works permanently with them. Representatives and their customers are always working on projects with the same team. I can imagine the amount of time this must save. In my experience most consultant's have their own special ways of designing a project. A regular team set up makes it easier to take account of their customer's individual ideas from project to project.



**David Clement**, nine years a machine operator with the company.



**Jack Van Gelder**, wireman. One of the new boys, having joined two years ago.



**Scott Feulner**, with what looks to the Editor very like some mechanical dimmers. Remember, Specials are an Electro speciality!



**Ross Montoya**  
To make certain Electro products reach our customers as we would wish, Ross sprays foam into packaging which solidifies to hold all in place.

# Four Electro Controls Jobs in Pictures



## Theatre

**The Capitol Theatre, Salt Lake City**

*Façade of the Capitol Theatre. The ground floor windows open on to a very large foyer. The auditorium is all rococo white and gold. This ex-vaudeville theatre came close to being demolished to make room for a parking lot, but local enthusiasts gathered round and saved the fine old building.*



Roy Frandsen, the local Electro Regional Sales Manager, at the Electro lighting control.



Back stage, the magnificent old Electro sliding contact patch panel. All this has come down to a key pad on current Electro systems!



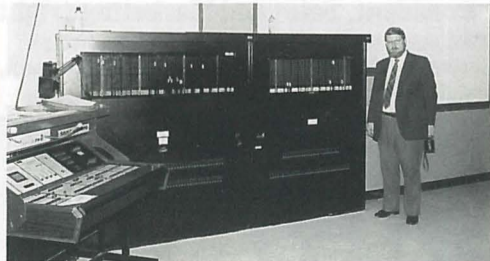
## Studio

**K.S.L. Television, Triad Center, Salt Lake City**

*The Triad Center, which houses K.S.L. Television.*



Tim Isaacs, Lighting Co-ordinator of K.S.L. at one of their Electro Control Lighting Systems.



Dimmer Cabinet and sliding control patch panel. These panels were getting smaller — compare with Capitol Theatre — when this job was done a few years back. Richard Evans, Electro R. & D. Manager, poses to give scale.



This shot is for non North American readers. These are, I am assured, tapes of the current commercials K.S.L. is airing!



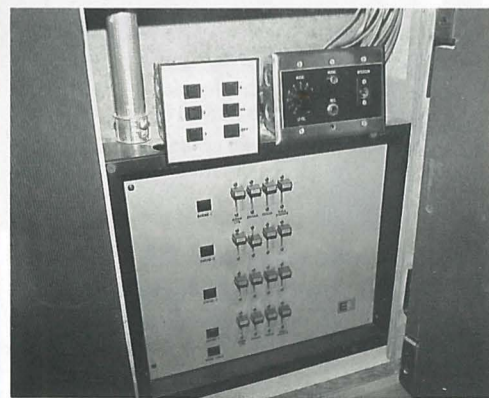
## Hotel

**The Marriott Hotel, Torrance**

*The Banqueting Suite and Bars have pre-set dimming by Electro Controls.*



*Where the patrons enjoy themselves. The Banqueting Room at one of the pre-set lighting scenes. Looks as though festivities are expected. The Control System allows for four lighting scenes, with four circuits, each one on a dimmer, Ceiling Troughs, Chandeliers, Wall Sconces and Spotlights. There is also a switched only working light circuit.*



*The setting panel, concealed behind a door in the wall panelling of the Banqueting Room. When lighting is balanced circuit by circuit on the slider faders each lighting 'scene' can be selected by the appropriate push button in the small panel above. The lighting changes from scene to scene at a pre-set but adjustable speed. This installation is typical of the type increasingly found in America, Great Britain and Germany, but still virtually unknown in France and Italy.*

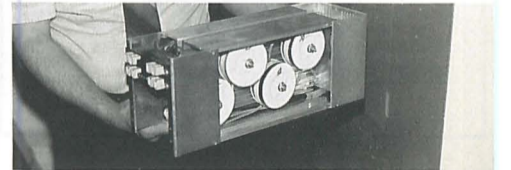


## School

**Murray High School, Salt Lake**



*Celebrity control for the Studio Theatre. (The 'control room' is a store off the studio, so operator views through the door.)*



*Close up of the Quad dimmer module.*



**ELECTRO CONTROLS**  
A subsidiary of The Rank Organisation

2975 South 300 West Salt Lake City,  
U.T. 84115 Tel (801) 487-6111  
Telex 388-395

6490 Viscount Road Mississauga,  
Ontario L4V.1H3 Canada  
Tel (416) 677-7130  
Telex 06-968646

**LOS ANGELES**  
**NEW YORK · TORONTO**  
**LONDON · PARIS · BRAUNSCHWEIG**  
**ROME · HONG KONG**  
**MELBOURNE**