

and LCD display to advanced features and offers System Wide Control from a hand held controller. Control may be analogue, Digital Network and/or DMX 512 for use with Microcontrol, Outlook and Premiere respectively. Two analog outputs are provided for external devices such as the Electronic Fluorescent Ballast Controller.

locations. 1, 2, 3 and 6-gang stations are available including a 1-gang Up/Stop/Down pushbutton station for remote level control.

Photocell Control:

The Photocell and Amplifier Panel provide an analog control signal which can be used to control Multidim, Unidim or any analog 0 to -10 volt dc dimmer. Modes of operation include Constant Light, Positive and Negative Light Correction.

Product Guide	UK & Europe	North America & Canada	South America	Asia
Microcontrol	✓	✓	✓	✓
Outlook	✓	✓	✓	✓
Premiere	✓	✓	✓	✓
System 6		✓		
EFBC		✓		
Digital Environ		✓		✓
Emergency Transfer		✓		
Unidim	✓			✓
Multidim	✓			✓
Control Stations	✓			✓
LD90	✓			✓

Products suitable around the World.



16A Multidim modular dimmer.

Strand Library

EMERGENCY TRANSFER CABINETS

Emergency Transfer Cabinets automatically transfer load circuits to emergency power to maintain adequate illuminance when the normal supply fails; an essential requirement in public buildings. Cabinets are available for 2, 4, 6 and 8 circuits and fully conform to UL 1008 and NEC 230-83, 700 and 701 safety standards.

UNIDIM MANUAL UNIT DIMMERS

Unidim unit dimmers are available in 5, 10 and 20 amp ratings for 220/240 Volts 50 Hz supply with a "hard-fired" thyristor drive circuit for maximum output stability for all suitable load types, including tungsten, transformer-fed tungsten halogen, fluorescent, cold cathode and neon.

Unidim is suitable for "manual" types of remote control station or an external analog signal in the range 0 to +/- 10 volts dc.

MULTIDIM "PLUG-IN" MODULAR DIMMERS

The Multidim range of modular, plug-in dimmers - available in 6, 16 and 32 amp ratings for 220/240 volt 50Hz supplies - designed to be built into an integrated system with versions to control a mixture of lighting loads.

Multidim is designed for use with remote pushbutton (preset) or manual (slider) control stations.

MANUAL SLIDER & PRESET PUSHBUTTON CONTROL STATIONS

Manual Control Stations:

Intended primarily for use with Unidim and Multidim, the manual control stations with 1, 2, 3 and 6-gang plus master slider are designed for slider control of one or more remote dimmers via an analog 0 to -10 volt dc control signal. For control from multiple locations, a 1-gang slider with take control pushbutton is also available.

Pushbutton Control Stations:

Pushbutton control stations are for use with Multidim to remotely select the dimmer's four preset lighting scenes from multiple remote

LD90 DIGITAL DIMMER

LD90 is a versatile dimming rack suitable for architectural or entertainment applications. Each rack contains up to 3 power blocks each comprising either 8 x 2.5 kW or 4 x 5 kW dimmers. The LD90 Processor (as with the Digital Environ Processor) has a keypad and LCD display to program advanced features and offers System Wide Control from a hand-held controller. Control may be analog, Digital Network and DMX 512 for use with Microcontrol, Outlook and Premiere respectively. Two analog outputs are provided for external devices such as Unidim or Multidim unit dimmers.



Digital Environ dimmer cabinet.

Strand Library



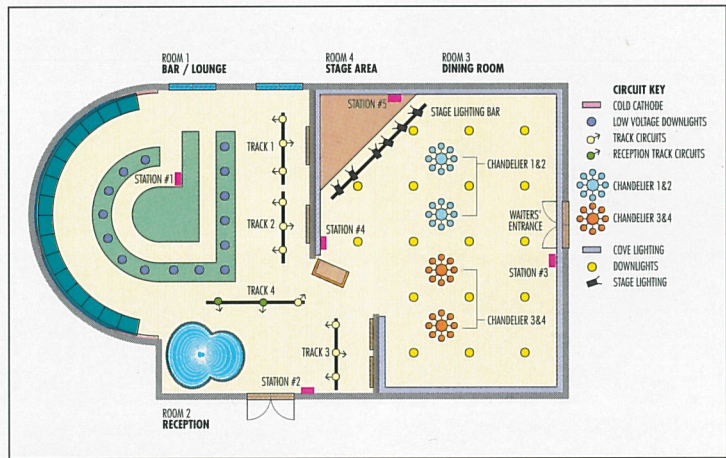
LD90 220V Digital Dimmer.

Strand Library



Museum and Theme Attraction lighting.

Photo courtesy of Minnesota Historical Society.



Lighting layout for a Restaurant and Bar.

Strand Library.



Atrium lighting.



Showroom lighting.

Photo courtesy of Craig Roeder