

# Inspiration

The Vari-Lite group of companies was founded as Vari-Lite, Inc, in 1981 on the belief that creative engineering can join with creative lighting to bring a new dimension to any performance or presentation.

Inspired by the magic of moving light and changing colour, we set about creating complete lighting systems that add subtle nuance or brilliant spectacle to any event. We offer designers the ultimate tool for creating lighting moments to remember.

Since 1981, Vari-Lite has led the world in automated lighting technology; developing pioneering products with an unrivaled reputation.

Today, lighting professionals in theatre, television, concerts, motion pictures, corporate shows and advertising, look to Vari-Lite for inspiration...

## THE AUTOMATED LIGHTING COMPANY

**VARI\*LITE®**

Vari-Lite, Europe Limited  
20-22 Fairway drive,  
Greenford,  
Middlesex,  
UB6 8PW

Tel; 0181 575 6666  
Fax: 0181 575 0424

# PRICES 1996

VARI\*LITE®

# LUMINAIRES

## Series 200™

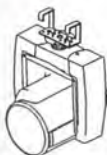


|                                     | Daily | Weekly |
|-------------------------------------|-------|--------|
| VL2B™ spot luminaire .....          | 50.00 | 150.00 |
| VL2C™ spot luminaire .....          | 60.00 | 180.00 |
| VL2x™ library gobo supplement ..... | 9.00  |        |



|                          |       |        |
|--------------------------|-------|--------|
| VL4™ wash luminaire..... | 43.00 | 129.00 |
|--------------------------|-------|--------|

## Series 300™



|                            |       |       |
|----------------------------|-------|-------|
| VL5™ wash luminaire.....   | 26.00 | 78.00 |
| VL5B™ wash luminaire ..... | 28.00 | 84.00 |

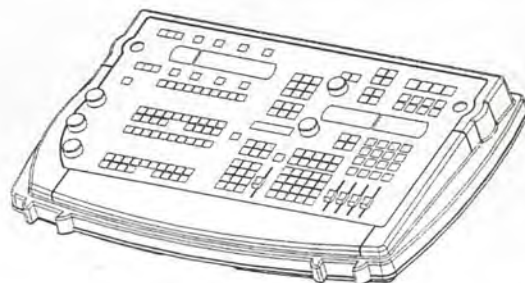


|                                 |       |        |
|---------------------------------|-------|--------|
| VL6™ spot luminaire .....       | 48.00 | 144.00 |
| VL6™ accessory supplement ..... | 9.00  |        |



|                               |       |       |
|-------------------------------|-------|-------|
| VLM™ moving mirror unit ..... | 16.00 | 48.00 |
|-------------------------------|-------|-------|

# CONTROL



|  | Daily  | Weekly   |
|--|--------|----------|
| Artisan®/ Mini Artisan® system .....           | 270.00 | 810.00   |
| Mini Artisan®/ Mini Artisan® system .....      | 184.00 | 552.00   |
| Mini Artisan® 2 / Mini Artisan® 2 system ..... | 184.00 | 552.00   |
| Dual Artisan® control console system .....     | 356.00 | 1,068.00 |
| Additional Artisan® .....                      | 178.00 | 534.00   |
| Additional Mini Artisan® .....                 | 92.00  | 276.00   |
| Additional Mini Artisan® 2 .....               | 92.00  | 276.00   |
| VLD® dimmer interface/Smart DMX™ .....         | 42.00  | 126.00   |

# CREW

|                                | Per Day |
|--------------------------------|---------|
| Operator.....                  | 185.00  |
| Crew chief / Senior Tech ..... | 175.00  |
| Technician.....                | 160.00  |

Crew charges do not include:  
Accommodation, transportation & catering

# CATALOGUE GOBOS & COLOURS

The VL2C™ & VL6™ Luminaires can be supplied configured with any combination of the Catalogue gobos.

Additionally the VL6™ luminaire can be configured with any of the catalogue colours, or non standard lenses at:

Per luminaire, per week..... 9.00

## Purchase

|                             |       |
|-----------------------------|-------|
| Catalogue Gobos & Colours   |       |
| Catalogue gobo.....         | 17.00 |
| Catalogue colour gobo ..... | 50.00 |
| Catalogue colour.....       | 40.00 |

## Custom Gobos

Custom gobos for the VL6™ and VL2™ luminaires can be supplied to your own artwork using our unique Vari-Image™ process:

Custom Gobo tooling charge..... 46.00

Thereafter;  
each conventional gobo .....

each colour VL6™ gobo .....

17.00  
50.00

## Studios time

Should substantial work be required on supplied artwork studio time will be charged:  
Studio time, per hour..... 30.00

Custom Colours  
Please ask for quotation and delivery.