

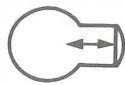


STRAND 813

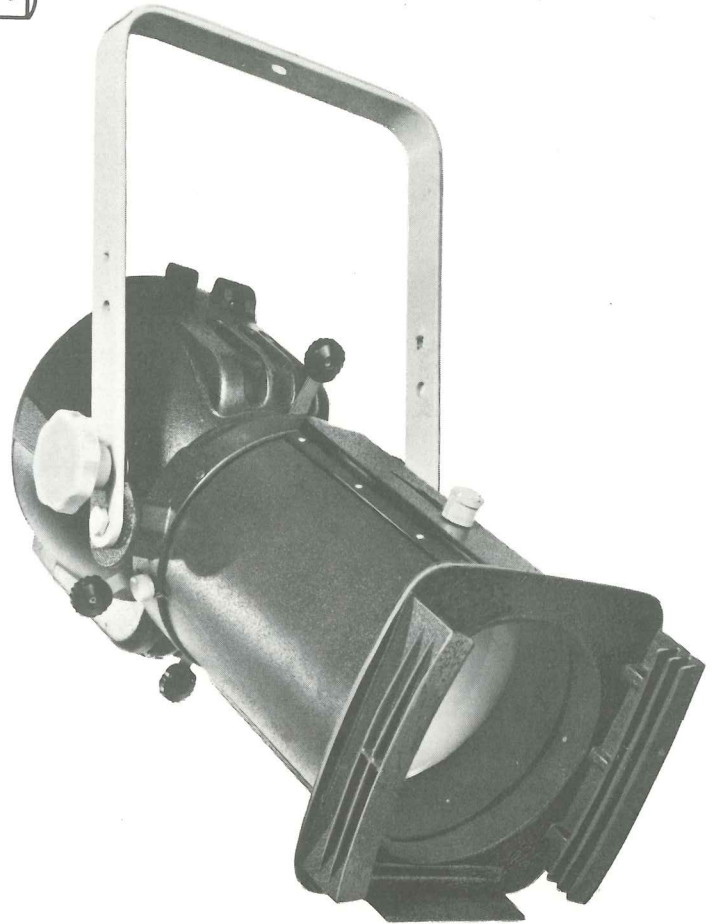
650 W VARIABLE SPREAD PROFILE SPOT

The variable-spread Profile spot combining flexibility of beam spread with high optical efficiency from a compact and lightweight luminaire. The beam can be accurately shaped by four externally operated shutters, each of which can rotate a full 90° around the optical axis. The beam spread is variable from a 22° medium angle up to a 35° wide angle to suit different throw distances from around 6m to 12m, or to provide different areas of coverage from a constant throw distance. The external, independent adjustment of the two internal lenses also provides a choice of soft or hard edge beam qualities. The optical performance (detailed overleaf) with a 650 watt, long life halogen lamp surpasses that of previous, bulkier 1000W Profile spots using base-up burning projector lamps.

The pressure die-cast lamphouse accurately locates a frontal, annular reflector as well as the faceted rear reflector, and is fitted with a rear grab handle. The reversible steel fork has alternative tilt pivot points for more compact suspension.

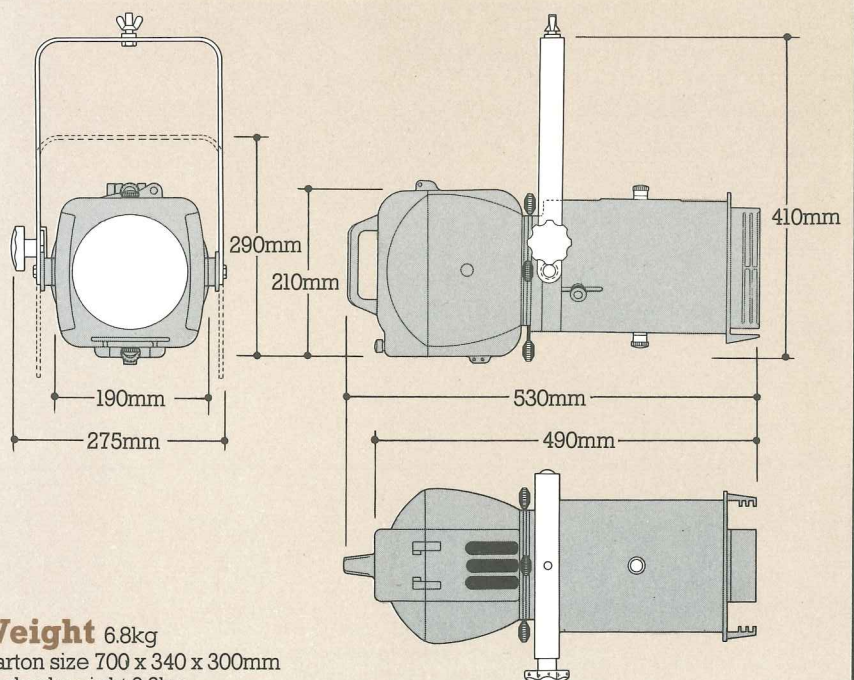


21 301 01



Dimensions

Scale 1:10



Order Codes

Model 813 Variable Spread Profile Spot 21 301 01
650W 240v Class T/13 Halogen lamp 34 233 04
13,500 lm, 750 hr. obj. life
500W 240v Class T/17 Halogen lamp 34 217 09
9,500 lm, 750 hr. av. obj. life

Weight 6.8kg
Carton size 700 x 340 x 300mm
Packed weight 9.2kg

Performance

Typical performance, based upon
650W 240v Class T/13 calibrated lamp,
C.13 filament, 13,500 lm, 750 hour

Maximum circle, hard-edge focus

Narrowest adjustment:

Cut-off angle 22°

½ peak angle 15.5°

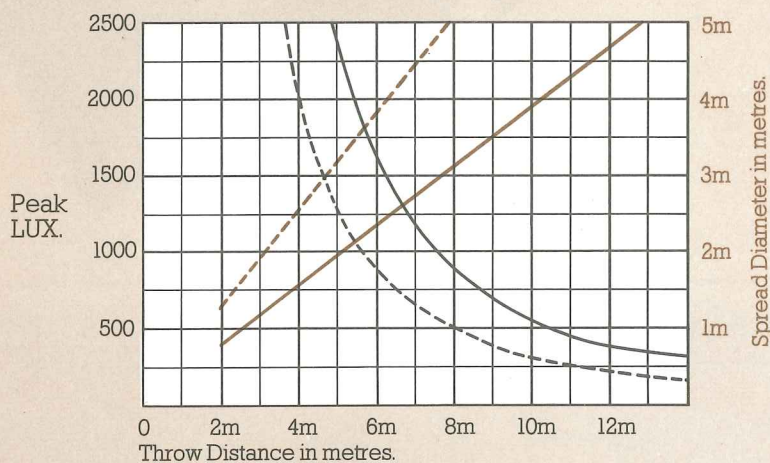
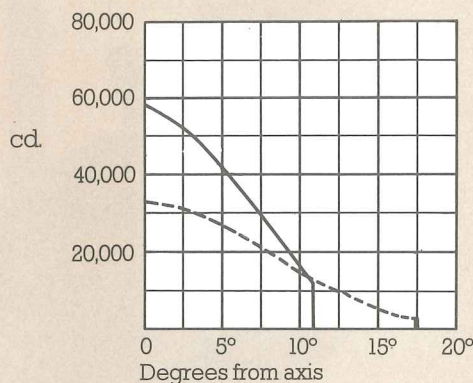
58,000 peak candela (cd)

Widest adjustment:

Cut-off angle 35°

½ peak angle 19.5°

32,500 peak candela (cd)



———— Narrowest

----- Widest

Specification**Lamphouse**

Pressure die-cast aluminium alloy, with top-hinged rear access. Heat-resisting grab handle fitted to rear.

Fork

Mild steel, reversible, with 50mm dia. friction disc and handgrip knob for tilt clamp. Alternative, shorter tilt pivot axis provided. Fork threaded and supplied with ½-in. Whit. bolt, washers and wing-nut for suspension and swivel clamp.

Lampholder

P28s medium prefocus, porcelain body, fitted with 1m external length of 3 x 1.5mm² conductor, toughened silicone rubber insulated and sheathed flexible cable, secured by a strain-relief gland.

Reflectors

180mm dia. faceted ellipsoidal rear reflector and spherical, annular frontal reflector, both of polished anodised aluminium.

Gate Assembly

Four steel alloy beam-shaping shutters, each capable of 90° rotation around the optical axis, with heat-resisting, serrated-edge knobs with recessed fixing.

Lenses

Variable-spread combination of 150mm dia. plano-convex front lens in internal lens tube sliding within fixed length, rigid outer tube with external scale, and 89mm dia. plano-convex rear lens with cast mount sliding along internal rods. Lenses moved independently and locked by heat-resisting knobs.

Colour Frame

Die-cast alloy rigid front with replaceable double die-cast runners, 150mm long, for the 165mm square colour frame supplied for 'Cinemoid' sheet or thin-film 'Chromoid', or for the addition of colour change accessories.

Finish

High temperature stoved texture black.

Lamps

650W max. P.28s (medium prefocus) base. 55.5mm l.c.l. with 40mm max. dia. quartz envelope. 650W Class T/13 Halogen, or 500W Class T/17 Halogen recommended for stage use.

Accessories

165mm ² lens guard, 25mm mesh	27 885 02
Set of 3 circular aperture masks	23 879 01
Additional Colour Frame	27 792 17
Net weight 0.2kg	
Colour Change Wheel, 24v	23 890 07
Net weight 2.15kg	
Semaphore Colour Change, 24v	23 781 00
Net weight 3kg	



Rank Strand Electric
A Division of Rank Audio Visual Limited
P.O. Box 51, Great West Road
Brentford, Middlesex TW8 9HR
Telephone: 01-568 9222 Telex: 27976

The Company reserves the right to make any variation in design or construction to the equipment described.