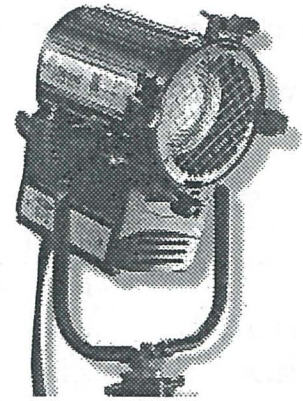


HMI 575 W Daylight Fresnel

- ❑ Improved light quality and output, producing flatter and more even field
- ❑ High quality, rugged, durable
- ❑ Corrosion resistant
- ❑ IP23 factory rated for dry and humid conditions
- ❑ Compatibility of parts throughout the range
- ❑ A comprehensive range of accessories, interchangeable with existing Quartzcolor products
- ❑ Easy to service and maintain
- ❑ ON-OFF buttons, operated from both head and ballast
- ❑ New focus system, easy to adapt from manual to pole operation and maintenance-free
- ❑ Easy running barndoor ears
- ❑ Scratch resistant, black, non-reflective housing
- ❑ All heads supplied with barndoor, colour frame and head to ballast cable
- ❑ Meets all relevant international standards and regulations



Operational data

Safety:

A microswitch system prevents the lamp operating if the front section is open.

25 x 25 mm wire mesh guard.

Accessory fitting:

Cast aluminium ears.
Spring loaded top catch for retention of accessories.

Tilt adjustment:

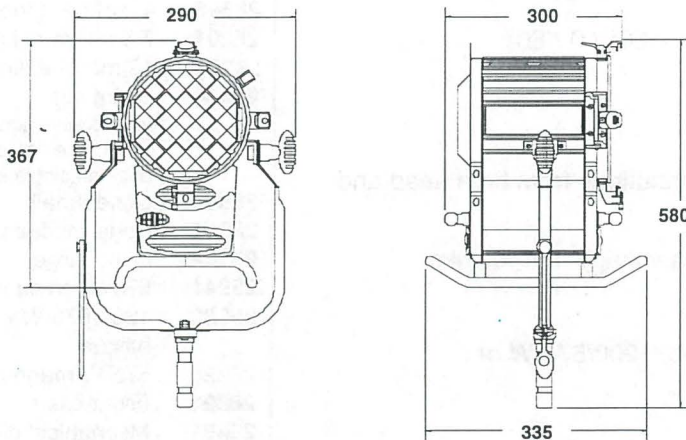
Pivot located at centre of gravity for excellent balance and positive locking.

Focus adjustment:

Front and rear focusing knob for smooth and precise action from spot to flood positions

Lamp access:

Hinged lens door allows easy access for lamp replacement



[mm]

Weights & dimensions

Lens diameter	130 mm SF	Weight (head+stirrup+skid)	7.5 kg
Accessory diameter	186 mm	Packed weight	14 kg
Filter cut size	150x150 mm	Packed volume	450x370x380 mm

Ballast dimensions

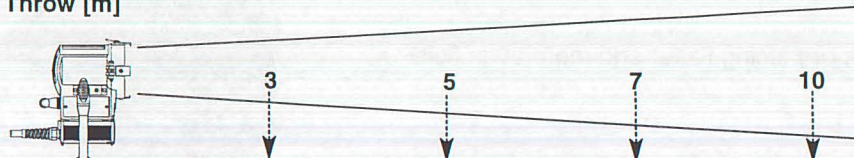
p/n 25941	112x180x210 mm - 3.5Kg
p/n 25030	172x220x283 mm - 6.5Kg
p/n 25220	330x216x170 mm - 14Kg



Photometric data

Typical performance based on 575 W HMI lamp:

Throw [m]



	Lux	φ [m]	Lux	φ [m]	Lux	φ [m]	Lux	φ [m]
SPOT (6°)	35,670	0.3	12,840	0.5	6,550	0.7	3210	1
FLOOD (56°)	3,120	3.2	1,120	5.3	570	7.4	280	10.6

Lamp data

HMI/MSR 575W single ended

LCL (mm)	70
Base	G22
Lumens	49,000
Rated life hours (H)	1000
Colour temp. (K)	5600

Mechanical data

- Paint / Finish:** Powder coated epoxy paint with special extra high temperature treatment in critical areas. External textured low gloss finish
- Lamp house** Stainless steel with aluminium extrusions and die cast components
- Mounting:** Robust tubular steel stirrup with standard EURO spigot

Environmental data

- Max operating ambient temperature:** 45°C
- IP Rating:** IP 23
- Tilt recommended angle of use:** -60° / 0 / 60°

Electrical data

- Switching:** ON/OFF double pushbuttons from both head and ballast
- Ignitor:** Small, compact, high voltage, hot restrike
- Ignition Voltage:** 25 kV
- Ballasts:** Electronic flicker-free, 1200/575 W or magnetic 575 W
- Standards compliance:** CE marking

Ordering information

Cat. No	Description
27905	HMI 575 W bare head with stirrup
27040	HMI 575 W supplied with stirrup, colour frame, 4 leaf rotating barndoor, 7.5 metre extension cable

Optional accessories

Cat. No	Description
28849	Colour frame
28846	4 leaf barndoor
28201	7.5 metre ext.cable
28202	15 metre ext.cable
28844	Scrim set (one double scrim, one single scrim, one half double scrim, one half single scrim)
28840	Cone small
28841	Cone medium
28842	Cone large
25941	575 W electronic ballast
25030	1200/575 W electronic ballast
25220	575 W magnetic ballast
28821	Flight case
28401	Mechanical dimmer
28843	Adaptor cable to other 575 W ballast

The Company reserves the right to make any variation in design or construction to the equipment described. © Strand Lighting Ltd 1998. Strand™, Strand Lighting™, Strand Quartzcolor™ are trade marks of Strand Lighting Limited and Strand Lighting Inc.

Strand Lighting Ltd North Hyde House Hayes Rd Heston Middx UB2 5NL UK Tel: +44 (0)181 571 3588 Fax: +44 (0)181 571 3305
 Strand Lighting GmbH Ullsteinstrasse 114-142 D-12109 Berlin Germany Tel: +49 (0) 30/70 79 51 0 Fax: +49 (0) 30/70 79 519 9
 Strand Lighting Italia srl Via delle Gardenie 33 00040 Pomezia-Roma Italy Tel: +39 06 91963.1 Fax: +39 06 9147136
 Strand Lighting Asia Ltd 7/F Corporation Square 8 Lam Lok Street Kowloon Bay Hong Kong Tel: +852 2757 3033 Fax: +852 2757 1767

LONDON - BERLIN - ROME - PARIS - MOSCOW - LOS ANGELES - NEW YORK - TORONTO - HONG KONG