

HILITE™

Low energy display spotlights 150W

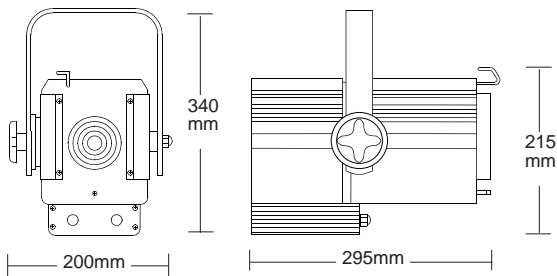
Features

The two Hilite spotlights bring theatre lighting capability to display lighting by introducing beam shaping control. The use of low energy, long life discharge lamps ensure low running costs and low maintenance in fixed installations.

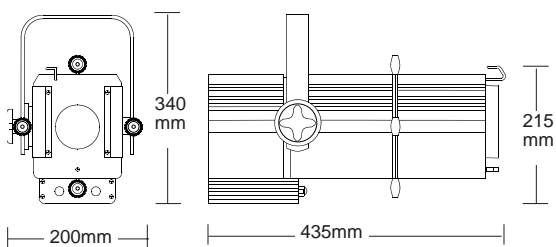
- ❑ Choice of Fresnel or Profile Spot
- ❑ Fresnel has a soft edged beam variable between 9° and 47°
- ❑ Profile Spot has beam angle of 26° but with four shutters to crisply shape the beam
- ❑ Accessory lens available to spread Hilite 23 to 38° beam angle
- ❑ Integral ballast and ignitor for ease of installation
- ❑ Finished in white for blending into most interior schemes



Hilite F



Hilite 23



Weights and Dimensions

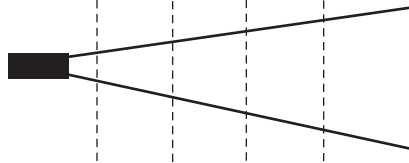
	Hilite F	Hilite 23
Weight (kg)	6.5kg	8.2kg
Packed Weight	7.7kg	9.4kg
Packed Volume	0.039m ³	0.050m ³

Performance Guide

Typical performance based on laboratory readings using MBI-T 150W lamp

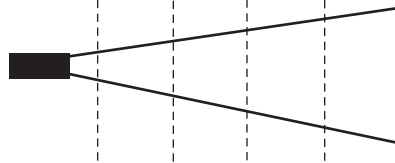
Hilite F: spot

Distance (m)	4	6	8	10
Beam Ø (m)	0.63	0.94	1.26	1.58
Illum (lux)	2660	1180	665	425



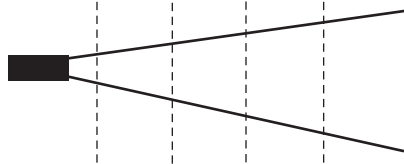
Hilite 23: Narrow (28°)

Distance (m)	4	6	8	10
Beam Ø (m)	1.85	2.8	3.7	4.6
Illum (lux)	2300	1020	575	370



Hilite F: flood

Distance (m)	4	6	8	10
Beam Ø (m)	3.5	5.2	7.0	-
Illum (lux)	350	155	90	-



To calculate lux levels at any throw distance divide the following factors by the distance squared:

	Hilite F - Spot	Hilite F - Flood	Hilite 23
	42525	5560	36763

To calculate beam diameters at any throw distance multiply the throw in metres by the following factors:

	Hilite F - Spot	Hilite F - Flood	Hilite 23
	0.16	0.87	0.46

Operational Data

Lamp Access

Through sliding top cover secured by screw.

Focus Adjustment

By sliding lock knobs on underside of units

Accessories

Colour runners take DIN standard 125 x 125mm colour frames.

Iris diaphragm for Hilite 23 allows adjustment of beam angle

Mechanical/Electrical Data

Construction

Extruded aluminium side panels with pressed steel front, rear and infill panels all finished in white epoxy powder coating.

Lenses

Heat resistant borosilicate lenses.

Lampholder

G12 to take single ended metal halide lamps of 150W

Supply Voltage

230V +/- 10% 50/60 Hz

Standards compliance

Designed to conform to EN 60 598 2-17

Ordering information

Hilite spotlights are supplied with integral ignitor and ballast suitable for 230V/240V/250V operation, mounting fork with M10 fixing bolt and wing nut and a colour frame. A mains input socket is fitted to the rear panel and a mating connector is provided for use with contractors wiring.

Cat No. Description

11500	Hilite F - Fresnel Spot
11520	Hilite 23 - Profile Spot

Optional accessories and lamps

18031	Barndoor, 4 leaf rotatable for Hilite F
18033	Iris diaphragm for Hilite 23
18032	Wide angle lens for Hilite 23
18034	Additional colour frame, card
42020	MBI-T 150W Lamp, 4000K, 6000Hrs
82010	Hook clamp
82200	Standard wall bracket
82201	Heavy duty wall bracket
82202	Universal mounting bracket
82203	Boom bracket for vertical 48mm ext diam pipe
82000	Safety cable, light duty (up to 16kg)

The Company reserves the right to make any variation in design or construction to the equipment described. © Strand Lighting Ltd 1998. Strand™ and Strand Lighting™ are trade marks of Strand Lighting Limited and Strand Lighting Inc.