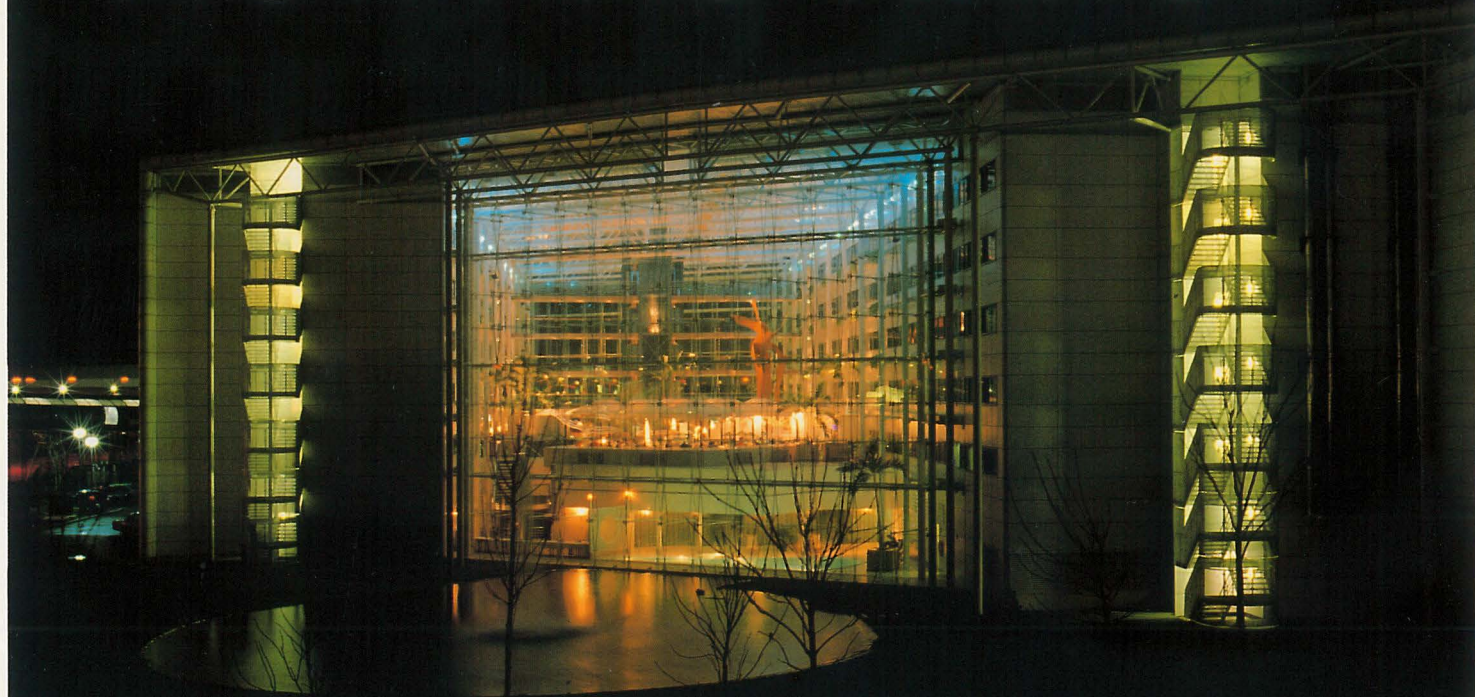


LIGHTING RANGE



HELIOS is a *New range of Energy Saving Floodlights, Fresnels and Profile Spotlights from CCT Lighting*, specifically designed as lightweight luminaires for semi-permanent, Architect or Lighting Designer, conceived installations.

HELIOS is *Creative, Controllable Light* using the latest in *Long Life* discharge lamp technology to provide a range of luminaires offering a versatility of light previously only available in theatrical environments & at a fraction of the costs, in operating terms, of conventional lighting systems.

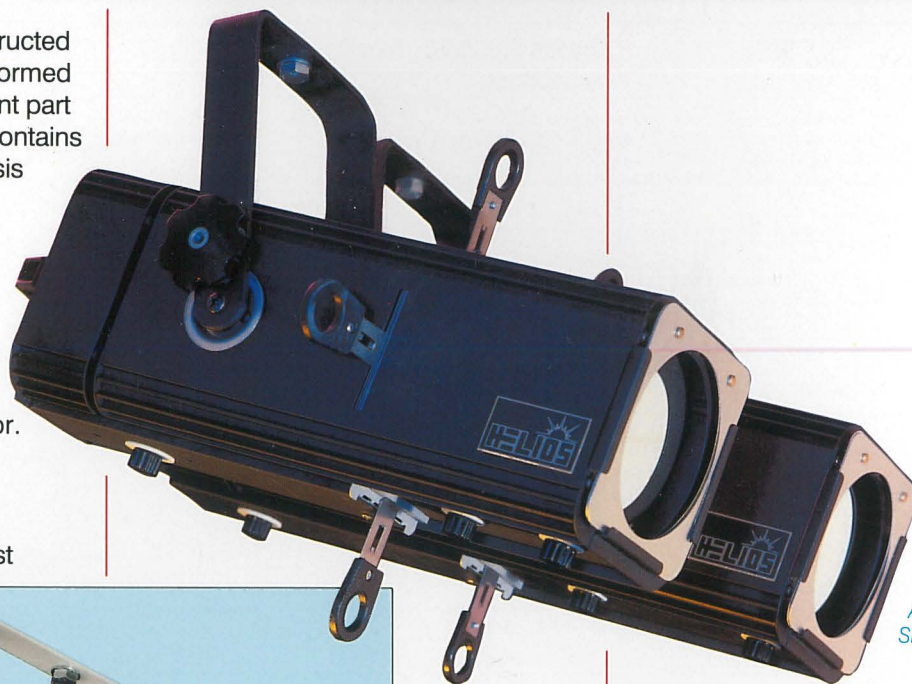
- 6,000 Hour Long Life Lamps with 70W or 150W lamp options with 3000 or 4000 Kelvin colour temperatures (Daylight or Artificial)
- Low Operating Temperatures and also Low Ultra Violet Emissions
- 100% Controllable lighting, helping create Subtle or Dramatic effects
- Minimum Re-lamping and substantial operating & power cost savings



PROFILE SPOTLIGHTS

The Helios Luminaires are constructed from aluminium extrusions and formed aluminium & steel sheet. The front part of the two sectioned spotlights contains a reflector and lampholder chassis for a 150W or 70W metal halide discharge lamp, whilst the one part floodlights have an asymmetric aluminium reflector and double ended holders for a 150W metal halide discharge lamp.

The rear part contains the ignitor. All Helios luminaires come as standard in black, baked epoxy finish but other colours are available. The luminaires must



THE ZO603D
AND ZO602D
SPOTLIGHTS



THE ZO607D
'LONG THROW'
SPOTLIGHT

Two independently operated plano convex lenses provide for beam size and focus control between $26^\circ <> 45^\circ$.

Profile Spotlights are perfect for applications where a precisely lit area of virtually any shape is required. Etched stainless steel Gobo patterns can be projected giving an endless choice of light and shadow effects. The Zoom lenses provide *Hard* or *Soft* focusing of the beam angle between $26^\circ <> 45^\circ$. "Narrow angle" and "Long throw" spotlight options are available, which offer beam angles of $19^\circ <> 39^\circ$ and $6^\circ <> 10^\circ$ respectively.

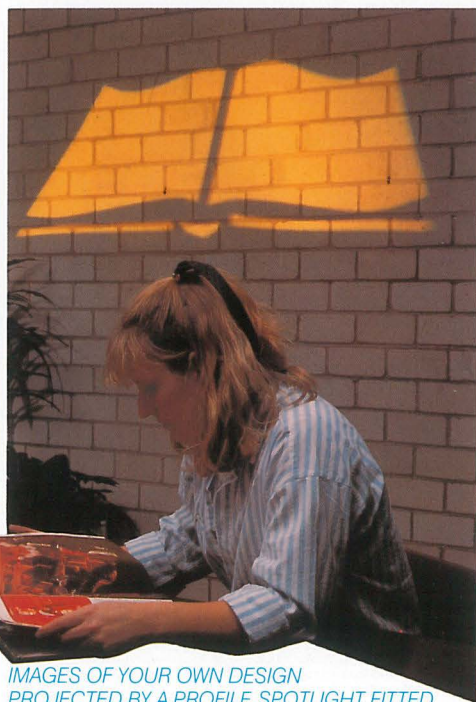
always be used in conjunction with a ballast unit or up to six luminaires may be run from a six way multiple ballast unit. The yokes on both the luminaires & the single ballasts can be used with most types of suspension systems and attitude adjustment is by means of a palm grip knob & clamping disc on each unit.

SPECIAL EFFECT LIGHTING OF THE CLOCKFACE USING LONG THROW PROFILE SPOTLIGHTS



The Helios Ballasts are constructed from aluminium extrusions and formed aluminium sheet. They are rated 220/240V primary and 95V lamp secondary, with a 0.9 power factor. The ballasts come complete with one metre of three conductor silicon cable for mains input and three metres for output to the luminaires which are fitted with auto-eject Bulgin connectors. The single ballast unit has an aluminium yoke for suspension with tilt-lock mechanism, the six-way ballast unit is more appropriately wall mounted.

Helios Profile Spotlights can be tuned externally for *Peak* or *Flat* beam performance by adjustment to the reflector. In front of the lamp & reflector is a gate comprising four independently operated stainless steel shutters which allow the beam to be shaped, hold the optional iris diaphragm, or gobo pattern holder, while front runners hold the colourframe accessory.



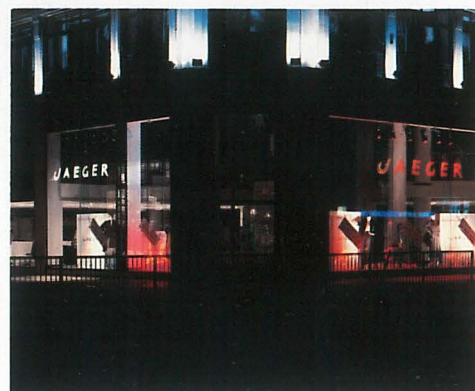
IMAGES OF YOUR OWN DESIGN
PROJECTED BY A PROFILE SPOTLIGHT FITTED
WITH A GOBO

FRESNEL SPOTLIGHT

Helios Fresnel Spotlights have a fixed borosilicate fresnel lens and the lamp chassis is externally adjustable for beam angle selection.

Fresnel Spotlights produce a soft edged variable beam particularly suitable for subtle three dimensional modelling and highlighting. The variable beam angle of $20^{\circ} < > 67^{\circ}$ allows a wide choice of *throw* and *beam* dimensions. Barn Doors & Theatre Colour Filters are available as accessories, the latter being available in an enormous colour range & enjoying almost indefinite life in these luminaires due to the low heat output from the discharge bulb.

In the two sectioned spotlights the rear part houses the ignitor unit together with a recessed 3 pin auto-eject mains connector for the ballast.



FRESNEL SPOTLIGHTS FITTED WITH COLOURED FILTERS HIGHLIGHT THE LETTERING ETCHED ON THE WINDOWS

Helios Accessories;

Spare Colourframes	ZO 431
Colourframes (Longthrow Spot)	ZO 013
Barn Doors (Spotlights)	ZO 043
Barn Doors (Floodlights)	ZO 045D
Drop-In Iris diaphragm	ZO 433
Roto Gobo pattern holder	ZO 100



THE ZO642D SPOTLIGHT

FLOODLIGHT

Helios Floodlights have been designed to give an even, *asymmetric* beam of light, ideal for general or colour wash illumination of walls, vertical displays and the like. A sprung colour frame is finger located and can be rapidly fitted in the front magazine.

In the floodlight the internal lamp ignitor is wired to a recessed Bulgin connector with an internal micro safety switch which ensures that the luminaire cannot be switched on unless the tempered front safety glass is correctly in position.



THE ZO46D FLOODLIGHT

A MORE EVEN DISTRIBUTION OF LIGHT IS POSSIBLE USING FLOODLIGHTS

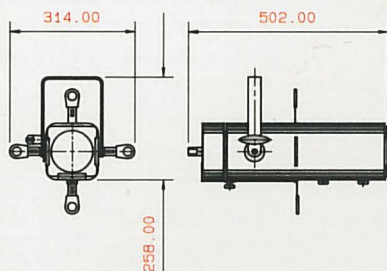
Long Life, 6000 Hour Lamp options, from GE 'Arcstream' or OSRAM 'Powerstar' Floodlights

150 Watt	3000° Kelvin, 80 Lumens/Watt	YO 055
70 Watt	4000° Kelvin,	YO 455
Spotlights	4000° Kelvin,	YO 445
150 Watt	3000° Kelvin, 80 Lumens/Watt.	YO 056
	4000° Kelvin,	YO 456
70 Watt	4000° Kelvin,	YO 446



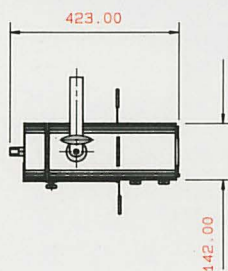


Profile Spotlight ZO 602D



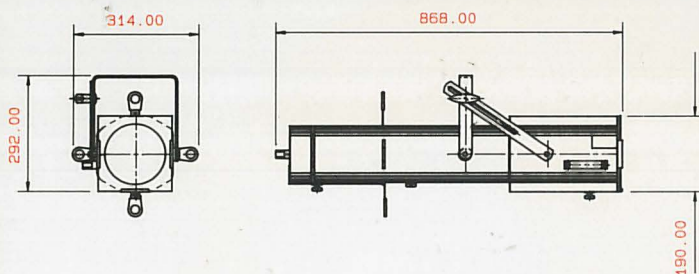
Variable angles $19^\circ < > 39^\circ$
Weight 4.9Kg

Profile Spotlight ZO 603D



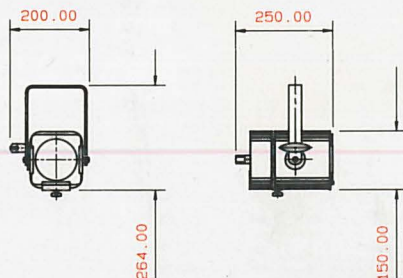
Variable angles $26^\circ < > 45^\circ$
Weight 4.5Kg

Profile Spotlight ZO 607D



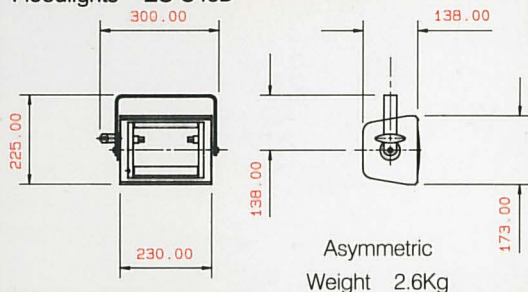
Variable angles $6^\circ < > 10^\circ$ Weight 8.25Kg

Fresnel Spotlight ZO 642D



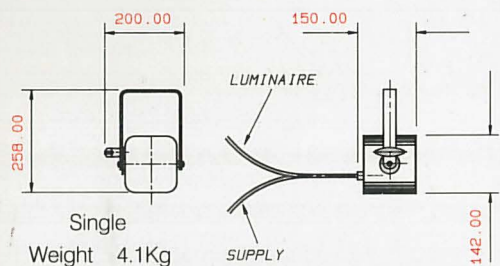
Variable angles $20^\circ < > 67^\circ$
Weight 2.8Kg

Floodlights ZO C46D



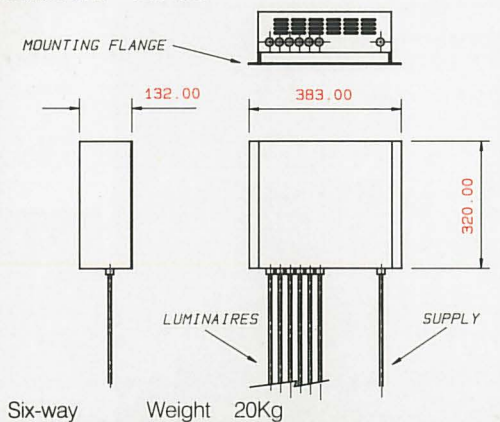
Asymmetric
Weight 2.6Kg

Ballast Unit ZO 007



Single
Weight 4.1Kg

Ballast Unit ZO 009



Six-way
Weight 20Kg

Photometric data is available on request
CCT reserve the right to change specification and materials without prior notice.
All photometric data given is typical only.

CCT LIGHTING

4 TUDOR COURT, BRIGHTON ROAD,
SUTTON, SURREY, SM2 5AE, U.K.

TEL: 44 (0)81 770 3636

FAX: 44 (0)81 643 9848