

Strand Lighting

P R O D U C T D A T A

Colour Call Scrollers

Strand Colour Call scroller's reliability has been established in the testing conditions of professional shows around the world and meeting requirements of quiet operation in low noise environments. Colour Call can be used in conjunction with Strand spotlights, operated from a digital control system and requires power supply and splitter box. CCI units are supplied with backplates to fit Cantata, Leko, Alto, Toccata and most parcans; CC2 units have built-in cylindrical fan and 4 mounting brackets that will accommodate most studio Fresnels (2kW-5kW). A standard 11 frame gel string is available as an option for both sizes of Colour Call.

V 24Vdc A 0.3A [CC1], 0.7A [CC2] III DMX512, PALS, ■ 335x305x88mm [13.1"×12.0"×3.46"] [CC1], 520x580x100mm [20.4"×22.8"×3.93"] [CC2]
 ■ 2kg [4.4lb] [CC1], 5kg [11lb] [CC2]
 ■ 2.5kg [5.5lb] [CC1], 6kg [13.2lb] [CC2]
 ■ 390x320x100mm [15.35"×12.59"×3.93"] [CC1], 850x550x250mm [33.46"×21.6"×9.84"] [CC2] ✓ SELV

Cat. No.	Description
55001	Colour Call scroller CCI with 2 backplates.
55002	Colour Call scroller CC2 (2/5kW size) with fan and 4 adjustable brackets.

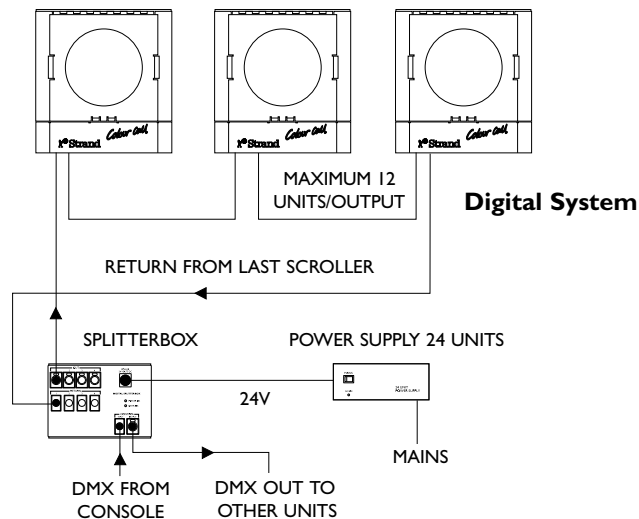
Colour Call Accessories

Cat. No.	Description
55024	Colour Call 24 unit Power supply, 230V, (up to 24 CCI or 12 CC2), with 1m (3.3') 24V power cable (PSU to splitter box).
55025	Colour Call 24 unit Power supply, 115V, (up to 24 CCI or 12 CC2), with 1m (3.3') 24V power cable (PSU to splitter box).

Colour Call Accessories Cont.

Cat. No.	Description
55030	Digital splitter box, Colour Call (max 24 CCI N12 CC2)
55050	Data/power cable, un-terminated, per metre, Colour Call ('daisy-chain' cable), min. qty 100
55103	Data/power cable, Colour Call, 3m (10') ('daisy-chain' cable)
55105	Data/power cable, Colour Call, 5m (16.5') ('daisy-chain' cable)
55110	Data/power cable, Colour Call, 10m (33') ('daisy-chain' cable)
55115	Data/power cable, Colour Call, 15m (50') ('daisy-chain' cable)
55120	Data/power cable, Colour Call, 20m (66') ('daisy-chain' cable)
55125	Data/power cable, Colour Call, 25m (82.5') ('daisy-chain' cable)
55124	24V Colour Call power cable, 5m (16.5') (PSU to splitter box)
55031	Additional CCI backplate to fit Cantata, Leko 6"
55041	Additional CCI backplate to fit Alto, Toccata
55051	CCI backplate to fit parcans, and Leko 10"
55061	CCI backplate to fit Leko 6" only
55052	CCI backplate to fit 8" Leko
55071	CCi backplate for Beamlite 500
55081	CCI backplate for Beamlite 1000
55101	Filter 'gel' string for CCI (ChromaGel: 24, 68, 43, 95, 21, 61, 54, 09, 07, 05, 00)
55102	Filter 'gel' string for CC2 (ChromaGel: 24, 68, 43, 95, 21, 61, 54, 09, 07, 05, 00)
55199	Gel Templates, Colour Call CCI
55150	Heat resistant sticky tape

Typical Colour Call Schematic



A GUIDE TO SYMBOLS AND ABBREVIATIONS

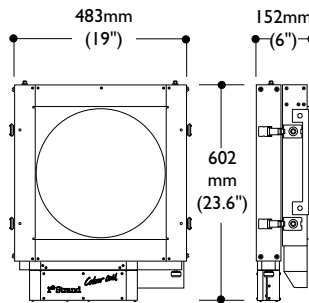
GENERAL V Supply voltage A Current rating ■ Weight of product ■ Packed weight ■ Packed volume
 ■ Overall dimension of product ✓ Compliance with international standards. W Watts (maximum recommended) III DMX: USITT DMX512 PALS: For PALS automated lighting and Colour Call scrollers.
 PSU Power Supply Unit. SELV Safe Extra Low Voltage IP International Production Standard

5.2.1

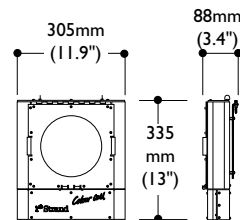
EFFECTS LIGHTING

COLOUR CALL™ Scrollers

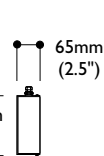
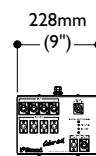
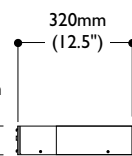
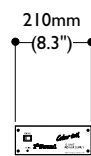
Colour Call CC2 2/5 kW Unit



Colour Call CCI 1kW Par Size Unit



Power Supply Unit



Digital Splitter Box

- Independent colour scroller units for use with spotlights or PALS automated luminaires
- Available in two sizes: CCI for up to 2.5kW spotlights and CC2 for 2kW to 5kW studio Fresnels
- Quiet operation with two speed fan selection for extended filter life or ultra quiet mode
- Variable scroll length of colour filter; up to 16 frames
- Universal digital DMX 512 control for connection to most lighting control desks
- Simple removal of filter scrolls for interchange and replacement
- Local control to send gel string to beginning or end frame to check filter scroll and for additional ease of replacement
- Fast scroll speed of up to 11 frames in 1 second
- Colour change immediately responds to fader position
- Stepless slow fades up to 4 minutes possible with the PALS protocol
- Compatible with GSX, LBX, Strand 430/530 consoles
- Direct drive scroll position sensor avoiding need for scroll length detection on power up
- Safe low voltage 24V dc operation
- Rugged XLR 5 pin control connection system
- Accessory holder for diffusion filter or barndoor attachment
- Can be used in self-contained autocycle mode (bounce chase and bounce chase with delay between frames) without the need for a control desk
- Colour Call, CCI supplied with two backplates for use with 6" and 8" Leko™, Cantata™, Alto™, Toccata™ and most Parcans
- Colour Call, CC2 provided with four adjustable brackets that can be accepted by most studio fresnels

Electrical Data

Power Supply Unit	24 Unit	
Nominal input Voltage	230V	
Input Voltage Variation	±15%	
Current Consumption	2.5Amp	
Output Voltage	24Vdc	
Splitter Box Input Voltage	24Vdc	
Current Consumption	0.1Amp	
Scrollers	CC1	CC2
Input Voltage	24Vdc	24Vdc
Current Consumption	0.3Amp.	0.7Amp (Incl Fan)
Control Input (Both)	DMX512. Connected via a 5 pin XLR.	
Indicators (LED)	Both units are fitted with three LEDs to give a visual display of correct operation. Red: 24Vdc power present. Green: Receipt of digital signal. Yellow: Level "mimic" of channel level.	

Environmental Data

Max Operating Ambient Temp	35°C (95°F).
IP Rating	IP20.

Mechanical Data

Mounting	Backplates are supplied to fit most luminaires. See Colour Call Accessories section for details.
-----------------	--

Weights and Dimensions

	Height		Width		Depth	
CC1	335mm	(13.1")	305mm	(12.0")	88mm	(3.46")
CC1 (Packed)	390mm	(15.35")	320mm	(12.59")	100mm	(3.93")
CC2	520mm	(20.4")	580mm	(22.8")	100mm	(3.93")
CC2 (Packed)	850 mm	(33.46")	550mm	(21.6")	250mm	(9.84")
Digital splitter PSUs	168mm	(6.6")	246mm	(9.6")	60mm	(2.4")
	215mm	(8.5")	330mm	(13.0")	85mm	(3.4")
Weights	Unpacked		Packed			
CC1	2.0kg	(4.4lb)	2.5kg	(5.5lb)		
CC2	5.0kg	(11.0lb)	6.0kg	(13.2lb)		
Digital splitter PSUs	2.2kg	(5.0lb)	2.7kg	(6.0lb)		
	3.8kg	(8.4lb)	4.2kg	(9.3lb)		

Operational Data

CC1	
Scrolling Speed	Max: 11 frames per second. Min: Fade time determined by control board.
Number Of Colours	2 to 16 frames. Calibrated at 11 frames.
Back Plates (included)	Cantata size: 185mm x 185mm (7.3" x 7.3") Cadenza size 245mm x 255mm (9.6" x 10.0") Backplates also available to fit most Strand luminaires
CC2	
Scrolling Speed	Max: 11 frames in four seconds. Min: Fade time determined by control board.
Number Of Colours	2 to 16 frames. Calibrated at 11 frames.
Suitable Luminaires	Castor, Pollux, Pollux Bambino.
Set Up & Control	The splitter box receives the DMX512 signal from the control desk. This is distributed, along with 24V dc power to four 'daisy-chain' scroller loops. Each 'loop' allows for a maximum of 12 scroller units. The splitter box optically isolates each scroller loop from its neighbour and from the control desk. Each daisy-chain loop should be returned to the splitter box as this distributes 24 volts of dc power in a ring formation, as well as terminating the DMX512 line correctly. Control may be achieved using DMX512 from most standard lighting consoles.



Strand Lighting

London: Strand Lighting Ltd, Grant Way, Isleworth, Middlesex, TW7 5QD, United Kingdom.

Tel: +44 (0)181 560 3171 Fax: +44 (0)181 568 2103

Wolfenbüttel: Strand Lighting GmbH, Salzbergstraße 2, 38302 Wolfenbüttel, Germany.

Tel: +49 (0) 5331 3008-8 Fax: +49 (0) 5331 78883

Rome: Strand Lighting Srl, Via delle Gardenie 33, Pontina Vecchia Km 33,400,

00040 Pomezia-Roma, Italy

Tel: +39 (0) 6 914 7123 Fax: +39 (0) 6 914 7136

Brussels: Strand Lighting Ltd, Chaussée de Haecht 1801, 1130 Bruxelles, Belgium

Tel: +32 (0) 2 245 8686 Fax: +32 (0) 2 245 2235

Stockholm: Strand Lighting Ltd, Box 20105, Tappvägen 24, 161 02 Bromma, Sweden

Tel: +46 (0) 8 799 6950 Fax: +46 (0) 8 799 6954

ALSO

FACILITIES IN: **LOS ANGELES • NEW YORK • HONG KONG • MILANO • MUNICH • BERLIN**

© Copyright Strand Lighting Limited October 1995



The Company reserves the right to make any variation in design or construction to the equipment described. © Strand Lighting Ltd 1995. Strand™, Strand Lighting™ and Colour Call™ are trade marks of Strand Lighting Limited. Strand Lighting is a company within the Film & Television Division of The Rank Organisation Plc, United Kingdom Country of origin Sweden.