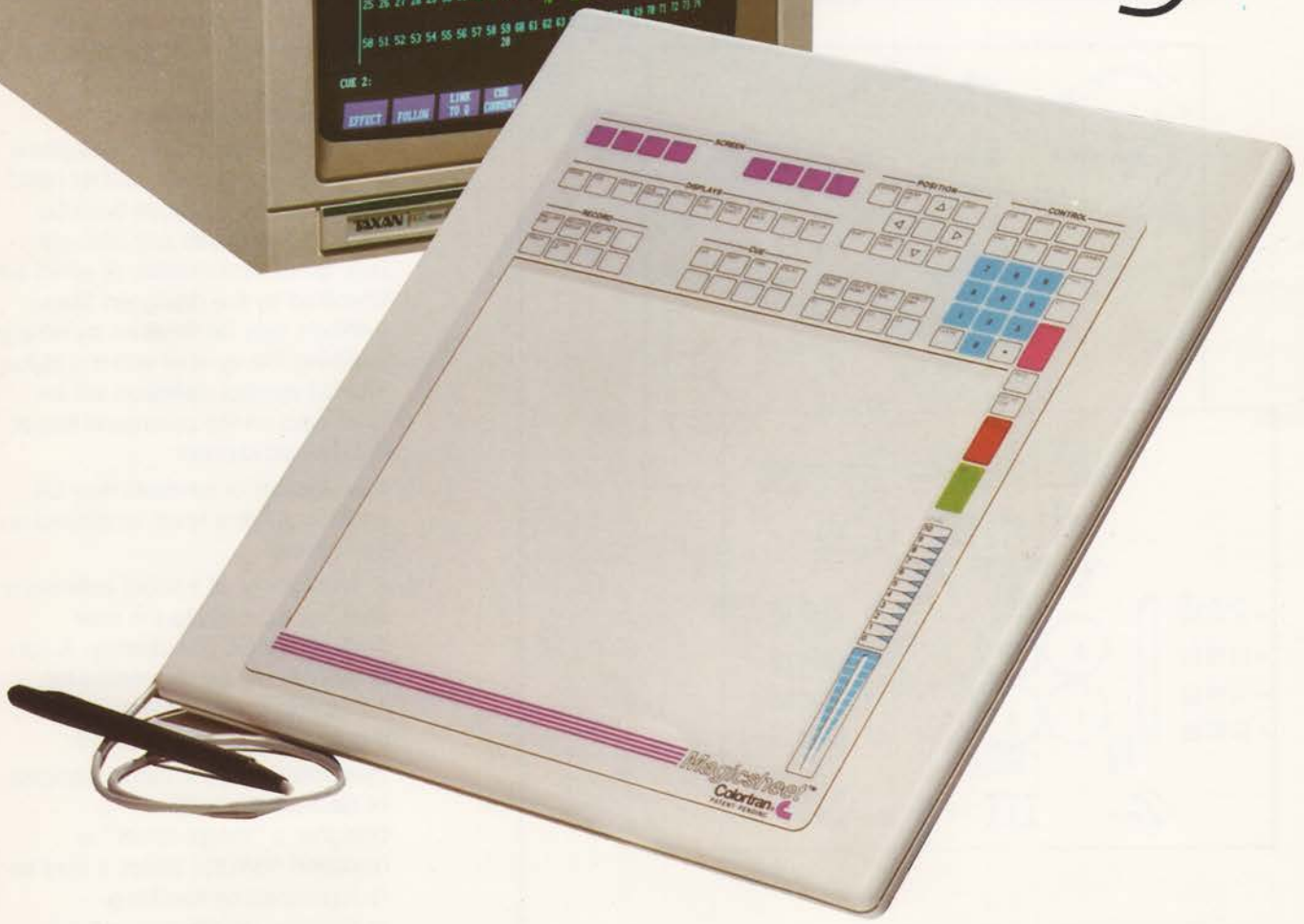




it's  
magic



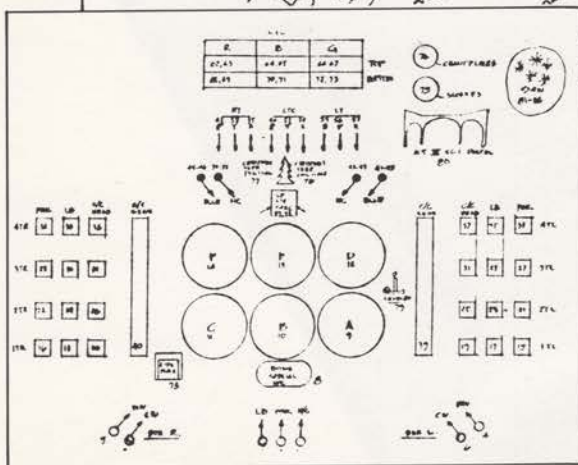
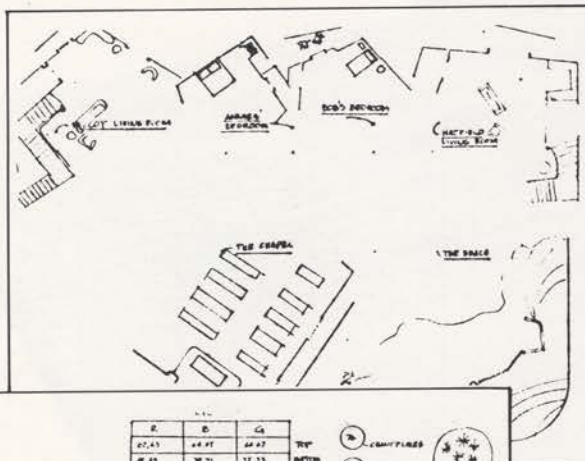
Magic Sheet  
 Colortran, Inc.

# Magic Sheet

# Specifications

## A. Description

The Magic Sheet shall be a self-contained portable unit duplicating all keyboard functions of the main console and allowing the designer to call up pre-defined lighting groups on his/her hand written "magic sheet" with the touch of a stylus. The unit shall consist of a high resolution touch sensitive graphics tables, a six color polycarbonate overlay with detent for an 8½ by 11 inch "magic sheet", a high quality stylus, and an optional high resolution color monitor. The magic Sheet may be used remotely in conjunction with a remote color monitor or locally with the main console.



The Magic Sheet shall have the following features:

1. A duplication of the following key groups on the main console which may be activated by touching with the stylus:
  - a) Display keys
  - b) Screen keys
  - c) Expanded numeric keypad
  - d) Record keys
  - e) Cue keys
  - f) Position keys
  - g) Playback keys
  - h) Spare keys
2. A slot shall be provided which simulates the raise/lower action of the wheel.
3. A level setting scale shall be provided which allows the user to set a group of channels to points or half-points with a single touch of the stylus.
4. An 8½ x 11 inch area shall be provided for the designer to place a "magic sheet" with his/her hand written symbols. These symbols may be defined as any channel, cue, group, submaster, or effect list specified by the designer. These symbols may be recalled by simply touching the symbol with the stylus. The full symbol definition will be displayed on the command line of the Record Monitor.
5. Any number of symbols may be chosen, set to a level, or placed on the "wheel".
6. A directory of all symbol definitions shall be available to the user through the SETUP display. A sub-directory may be requested by identifying a specific area of the magic sheet to be displayed.
7. Symbols may be added, changed, or deleted at any time. If a designer's "magic sheet" is removed from the tablet, it may be re-registered by touching registration points on the sheet.