



The Vista S3.

All the console you need.

The Jands Vista S3 is a compact version of the Vista that puts all the revolutionary features of the full-scale console into a desk you can fit under your arm.

Designed to be used with your Windows or Mac* desktop or laptop, the S3 is a Vista without the computer hardware components: we provide the software and the control surface, you provide the computer. Install the software, connect your PC to the S3 with a USB cable, and you've got a fully-operational Vista console.



The Vista S3 — a revolution in lighting on your own computer.

S3—the simplicity and power of the Vista on your own PC

When it was released in 2004, the Jands Vista changed the way live lighting is done forever. The Vista brings a whole new world of speed, ease of use and sheer intuitiveness to the world of lighting.

Now Jands has taken the Vista a step further with the S3 control surface.

Compact and powerful

The S3 package provides the software and the main elements of the Vista console, but leaves out the computer hardware components, such as the screen and keyboard, to provide an incredibly compact and powerful lighting console.

All you have to do is put the software on your computer, connect it to the S3 with a USB cable, and you've got a fully operational Vista. You have exactly the same software as the full-size console; the only difference is that you run it on your own computer.

Running on a tight budget? No problem

If you're in lighting rentals and want to supply a Vista on all your jobs, or if your installation simply doesn't need a full-scale Vista, the S3 is the ideal solution. The S3 is a cost-effective way to provide all the revolutionary features of the Vista to all your shows, big or small.

All the live features of the Vista

We know that most lighting operators want more faders and user-definable buttons, so the S3 provides all the features that make the Vista such a great live desk: big, clear LCDs, fader banks you can split or combine to double your playbacks or give you dedicated control of timing, chase speed and lots more. With 20 playbacks (10 with faders), four DMX outputs, timecode input and three encoder wheels, you'll have all the control you need.

Of course, the S3 features the Vista's incredible generic fixture model, so no matter what rig you've programmed your show for, the S3 adapts automatically if you have to run the same show with a different rig, without the need for re-programming.

Model	S3
Playback section features	Four Blue / White LCDs (240 x 64) Ten Playback sets with Flash button and Fader, plus Ten standard Playback sets Each playback includes; Select and Go button Split mode allows control of up to 20 Clips per panel Buttons can be configured for control of Groups, Presets, etc Page Up / Down buttons
Programmer section features	Blue / White LCD (240 x 64) Three Encoder Wheels Next / Previous buttons Twelve context sensitive function buttons
Super Playback section features	Single Playback with 2 faders and buttons Go, Pause, Back, Skip Forward, Skip Reverse, Skip to Start, Skip to End LCD and Encoder wheels for display and real time control of playback and other advanced functions.
Technical Specifications	
DMX Outputs	Four AXR 5-pin sockets, DMX-512-1990, RDM compatible
USB	Four Type A USB2.0, One Type B USB2.0
Linear Time Code input:	One 3 pin AXR female socket, 0.5Vpp, 1.2Vpp max.
MIDI in/thru/out	Three 5-pin 180° DIN sockets
Desk lamp out	One AXR 3-pin socket, 12V current limited (10W total)
Power Supply	Universal 100~240 VAC +/-10%, 47~63 Hz
Power Consumption	40W maximum
Mains Connector	One IEC 3-pin socket
Dimensions (w d h)	642 x 508 x 140 mm
Weight (Net / Shipping)	20 / 25kg
System Requirements	
Windows	Pentium 4, 3.0GHz, 512mb ram, Windows XP SP2
Mac	* Macintosh requirements and release date to be announced

Jands Pty Ltd

Locked Bag 15,

40 Kent Road

Mascot, NSW 2020

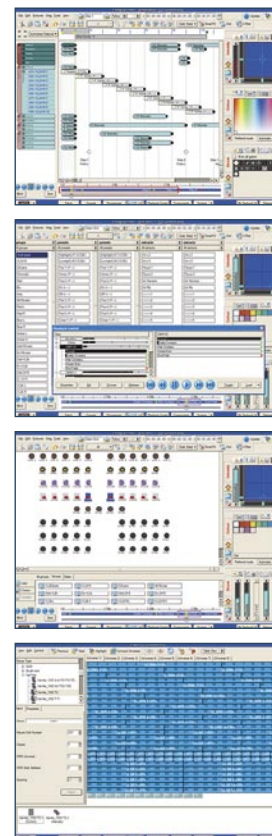
Australia

Phone +61 (0)2 9582 0909

Fax +61 (0)2 9582 0999

www.jands.com.au

info@jands.com.au



Specifications may change.
Please contact Jands or your dealer
for up to date information at the
time of purchase.

For further details contact Jands or your local dealer:

