



The Vista E2.

Even more control possibilities.



E2—when you need even more control

The Jands Vista is an incredible console, but with the massive lighting shows being staged these days, sometimes even the Vista doesn't have enough faders to control everything.

It's times like these that the Vista E2 comes to the rescue.

Connecting, via USB, to a Vista T2 or T4, the E2 extends your console, providing either another two playback panels or one playback and one programming panel along with four additional DMX outputs.

With the E2 it doesn't matter how big your show gets, you'll still have fingertip control of the whole performance.

Jands Pty Ltd

Locked Bag 15,

40 Kent Road

Mascot, NSW 2020

Australia

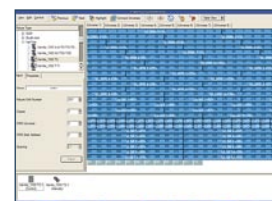
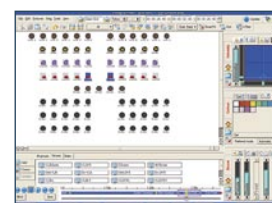
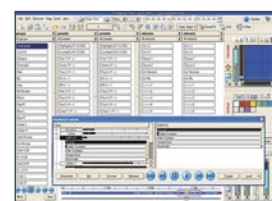
Phone +61 (0)2 9582 0909

Fax +61 (0)2 9582 0999

www.jands.com.au

info@jands.com.au

Model	E2 A	E2 B
Playback Panel	2	1
Panel features	Two Blue / White LCDS (240 x 64) Ten Playback sets (two banks of 5). Each playback includes; Flash button, Fader, Select and Go button Split mode allows control of up to 20 Clips per panel Buttons can be configured for control of Groups, Presets, etc Page Up / Down buttons	
Multi-function Panel	0	1
Panel features	Blue / White LCD (240 x 64)	
Playback Section	Five Playbacks (without faders) Split mode allows control of up to 10 Clips per panel Buttons can be configured for control of Groups, Presets, etc	
Panel features	Blue / White LCD (240 x 64)	
Programming Section	Three Encoder Wheels Next / Previous buttons Twelve context sensitive function buttons	
Panel features	Single Playback with 2 faders and buttons	
Super Playback Section	Go, Pause, Back, Skip Forward, Skip Reverse, Skip to Start, Skip to End Utilises LCD and Encoder wheels for display and real time control of playback and other advanced functions.	
Technical Specifications		
DMX Outputs	Four AXR 5-pin sockets DMX-512-1990, RDM compatible.	
USB	Four Type A USB2.0, One Type B USB2.0	
Desk lamp out	One AXR 3-pin socket, 12V current limited (10W total)	
Power Supply	Universal 100~240 VAC +/-10%, 47~63 Hz	
Power Consumption	40W maximum	
Mains Connector	One IEC 3-pin socket	
Dimensions (w d h)	441 x 638 x 210 mm	
Weight (Net / Shipping)	20 / 25 kg	



Specifications may change.
Please contact Jands or your dealer
for up to date information at the
time of purchase.

For further details contact Jands or your local dealer:

