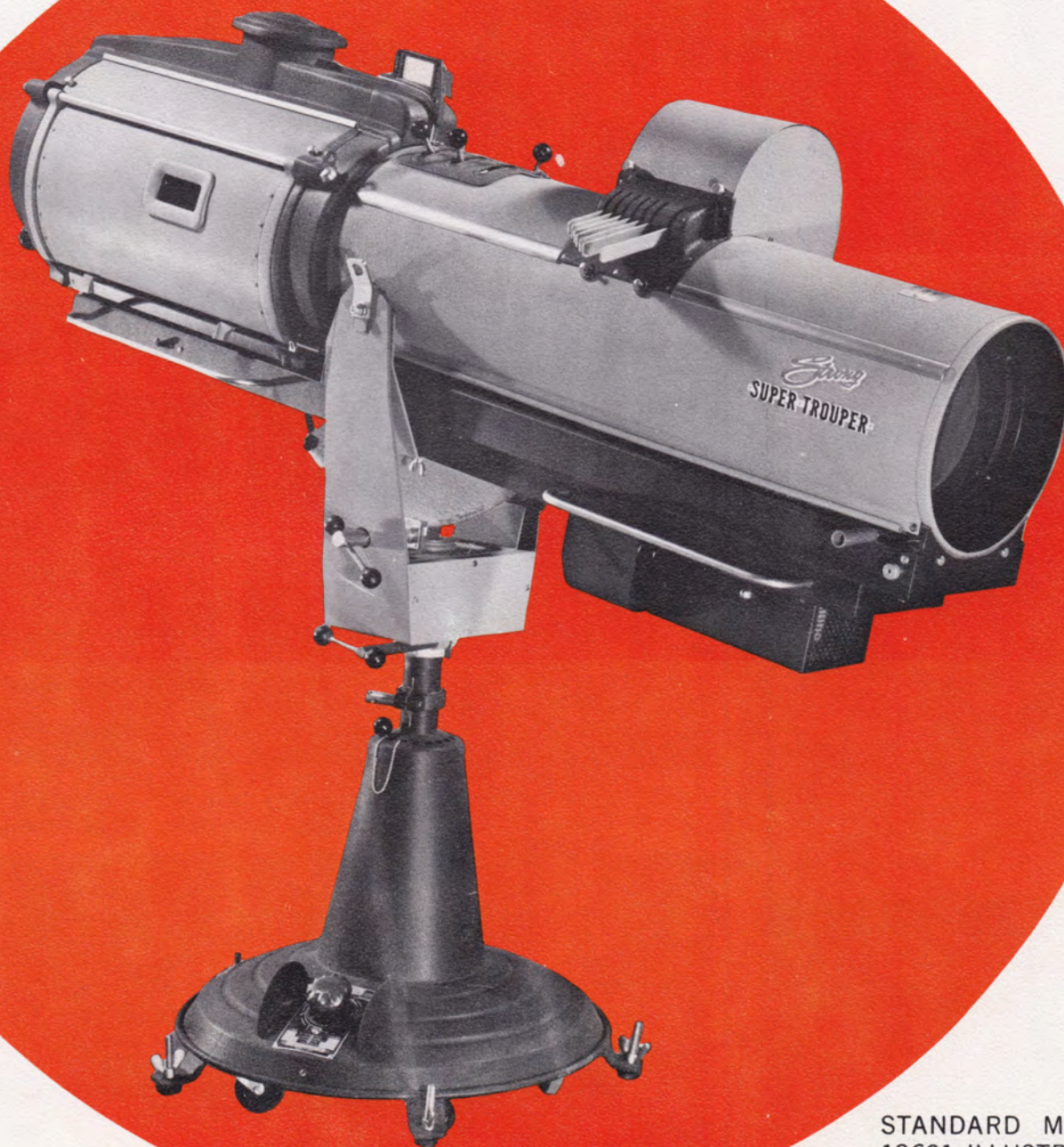


# *Strong* SUPER TROUPER

HIGH INTENSITY DIRECT CURRENT CARBON ARC  
**FOLLOW SPOTLIGHTS**

FOR THROWS OF 100 FEET TO 400 FEET



C.S.I. 1197

STANDARD MODEL  
19601 ILLUSTRATED

**SINGER**  
LIGHTING PRODUCTS

**THE STRONG ELECTRIC CORPORATION**  
87 CITY PARK AVENUE • TOLEDO, OHIO 43601



# Strong

## SUPER TROUPER FOR ...

- CONVENTION HALLS
- COLISEUMS
- UNIVERSITIES
- AUDITORIUMS
- TRAVELING SHOWS
- ARENAS
- HOTELS
- CIRCUSES
- AMPHITHEATRES
- THEATRES
- RACE TRACKS
- NIGHT CLUBS
- MUSEUMS
- FAIRGROUNDS
- HIGH SCHOOLS
- OUTDOOR PAGEANTS



International Hotel, Las Vegas  
#19602 Short Throw Super Troupers  
with Lobsterscope

The SUPER TROUPER is manufactured by Strong Electric whose high intensity spotlights are recognized as the standard for lighting throughout the entertainment world. Most facilities and traveling shows depend on the SUPER TROUPER for their follow spotlight requirements. Some of the features that have made the SUPER TROUPER necessary for your use include:

- Most powerful follow spotlight available which operates from a 110 volt A.C. outlet.
- Exclusive variable lens system . . . increases light intensity as spot size is reduced (see page four).
- Simplified operating controls for instant execution of cues.
- Rugged construction for long life and troupings.

## SPECIFICATIONS

### Mechanical

- #19601 Lamphouse
- #49006 Base and Yoke
- #51001 Lens Assembly
- Two Element Variable focal length lens system
- 11 $\frac{3}{8}$ " Silvered Glass Reflector
- Six Color Boomerang
- Ultra-Violet Filter
- Horizontal Masking Control
- Nichrome Steel Iris
- Spot Focus Adjusting Knob
- Dimming Control
- Controls for Adjusting Spotlight height, vertical and horizontal movement.

### Electrical

- Input—110 VAC—20 Amp., 60 Hz
- Output—43 Volts D.C. @ 30 Amp.
- Heavy Duty Off-On Switch
- Voltage adjusting switch and indicating meter in base
- 12-3 Power Cord w/plug
- Motor driven automatic carbon feed
- Recommended Carbon Trim:  
7mm x 12" Suprex Positives  
6mm x 9" Orotip Negatives
- Burning Rate:  
1 hr., 20 min. at 30 Volts D.C.
- Color Temperature 5700°Kelvin

50 Hz and/or other voltages available.

## OTHER MODELS

A short throw Super Troupers (#19602) is available for installations that require lighting a large area but limited to a short projection distance. (See photo on this page.) Most of the night clubs in Las Vegas and Reno, Nevada are equipped with Short Throw Super Troupers. This model uses the same lamphouse and base as the standard Super Troupers plus #51002 Lens Assembly. Light data shown on page four.

All Super Troupers are available at extra cost with a shortened base for use in locations that have low ceilings and/or lowered portholes. These models are identified as Lo Boy Super Troupers.

## ACCESSORIES

**Lobsterscope** — To project Stroboscopic (flicker) effects. Single knob controls variable speed motor.

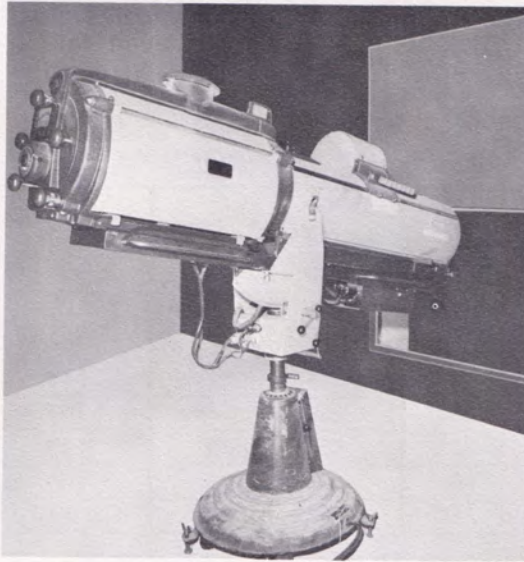
**Color Temperature Filter** — Reduces color temperature filter to 3200°K. Necessary for compatibility with Television cameras.



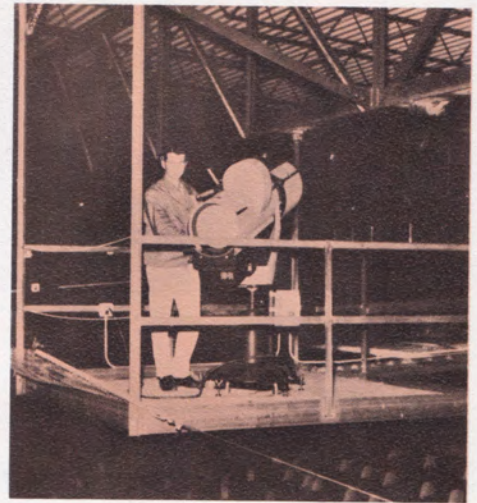
# SUPER TROUPE INSTALLATIONS



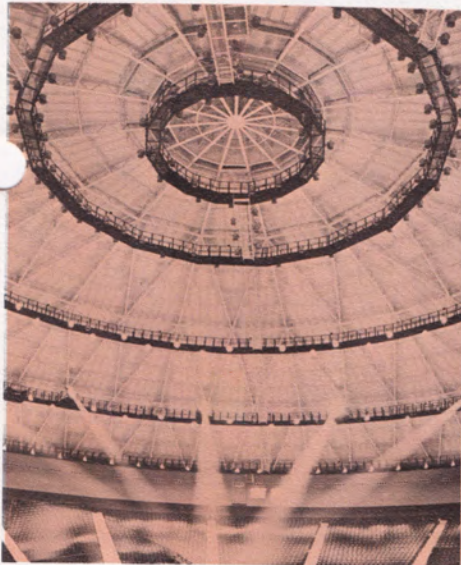
*Salt Palace, Salt Lake City, Utah*



*Fountainbleu Hotel, Miami Beach, Florida*



*Metropolitan Sports Center,  
Bloomington, Minn.*



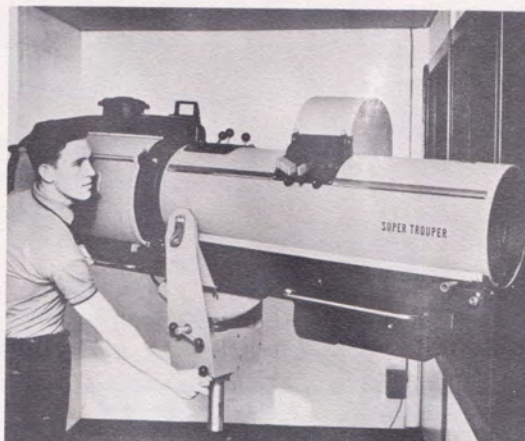
*Tarrant County Convention Center,  
Ft. Worth, Texas*



*Tommy Bartlett's Water Show, Wisconsin Dells*



*Notre Dame University,  
South Bend, Indiana*



*Assembly Center, Tulsa, Oklahoma*



*Ice Capades*



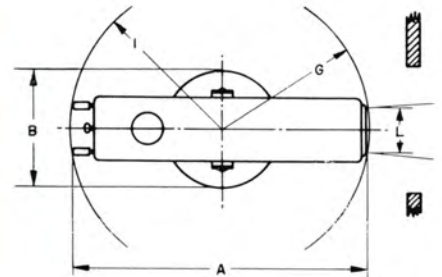
# SUPER TROUPER SPOTLIGHT

## Light Data and Specifications

TYPE  
19601 Lamphouse  
51001 Lens Mech.  
49006 Base & Yo.

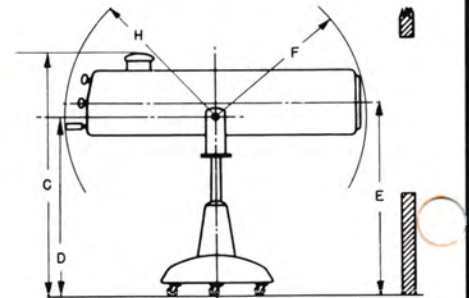
VARIABLE LENS SYSTEM PERFORMANCE AT VARIOUS DISTANCES FOR MODEL 19601

| Throw in Ft. | MAXIMUM FLOOD |              | SMALL SPOT |              | MIN. SPOT Diameter | DIA. WITH IRIS Foot Candles |
|--------------|---------------|--------------|------------|--------------|--------------------|-----------------------------|
|              | Diameter      | Foot Candles | Diameter   | Foot Candles |                    |                             |
| 20           | 5½ Ft.        | 1000         | 19"        | 11000        |                    |                             |
| 60           | 15 Ft.        | 120          | 40"        | 2200         | 11"                | 2200                        |
| 100          | 25 Ft.        | 43           | 60"        | 930          | 17"                | 930                         |
| 140          | 35 Ft.        | 23           | 80"        | 525          | 21"                | 525                         |
| 200          | 50 Ft.        | 11½          | 110"       | 300          | 27"                | 300                         |
| 240          | 60 Ft.        | 8            | 130"       | 215          | 31"                | 215                         |
| 280          | 70 Ft.        | 5½           | 150"       | 160          | 35"                | 160                         |
| 320          | 80 Ft.        | 4½           | 170"       | 125          | 39"                | 125                         |
| 360          | 90 Ft.        | 3½           | 190"       | 100          | 43"                | 100                         |
| 400          | 100 Ft.       | 2½           | 210"       | 85           | 47"                | 85                          |



SHORT THROW SUPER TROUPER FOR MODEL 19602

| Throw in Ft. | MAXIMUM FLOOD |              | SMALL SPOT |              | MIN. SPOT Diameter | DIA. WITH IRIS Foot Candles |
|--------------|---------------|--------------|------------|--------------|--------------------|-----------------------------|
|              | Diameter      | Foot Candles | Diameter   | Foot Candles |                    |                             |
| 20           | 9.5 Ft.       | 580          | 24"        | 3640         |                    |                             |
| 60           | 27.5 Ft.      | 46           | 62"        | 660          | 14"                | 660                         |
| 100          | 46.5 Ft.      | 16           | 103"       | 235          | 20"                | 235                         |
| 140          | 65 Ft.        | 8            | 141"       | 120          | 26"                | 120                         |
| 180          | 84 Ft.        | 5            | 179"       | 73           | 32"                | 73                          |
| 200          | 93 Ft.        | 4            | 198"       | 60           | 35"                | 60                          |



| Letter | Description  | Dimension | Letter  | Description                                   | Dimension             |
|--------|--|-----------|---|---|-----------------------|
| A      | Overall length of unit.....                            | 80½"      | L   | Diameter of beam at unit.....                 | 11"                   |
| B      | Overall width of unit at base.....                     | 29"       | M   | Maximum diameter of beam with 100' throw..... | 25"                   |
| *C     | Overall height of unit.....                            | 67"       | N   | Minimum diameter of beam with 100' throw..... | 17"                   |
| *D     | Height of pivot point.....                             | 50"       | *Measurements shown with spotlight at lowest height. Spotlight base provides variable adjustment upward of 12 inches. |   |                       |
| *E     | Height of beam axis when horizontal.....               | 53"       |   |   |                       |
| F      | Front clearance radius for vertical movement.....      | 43½"      |   |   |                       |
| G      | Front clearance radius for horizontal movement.....    | 42½"      |   | Maximum downward tilt.....                    | 45°                   |
| H      | Rear clearance radius for vertical movement.....       | 39"       |   | Maximum upward tilt.....                      | 25°                   |
| I      | Rear clearance radius for horizontal movement.....     | 39"       |   | Horizontal sweep.....                         | 360°                  |
| *J     | Maximum height at rear with maximum downward tilt..... | 82"       |   | Net weight.....                               | 395 lbs.              |
| *K     | Maximum height at front with maximum upward tilt.....  | 80"       |   | Gross weight.....                             | 610 lbs.              |
|        |  |           |   | Base Carton, Dom. Pack.....                   | 31" x 31" x 53" high  |
|        |  |           |   | Lamp Box, Dom. Pack.....                      | 88" x 26" x 36" depth |

DISTRIBUTED BY:



The Strong Electric Corporation  
87 City Park Avenue  
P.O. Box 1003  
Toledo, Ohio 43601  
(419) 248-3741

**Scanned From The Collection Of  
Rick R. Zimmerman**