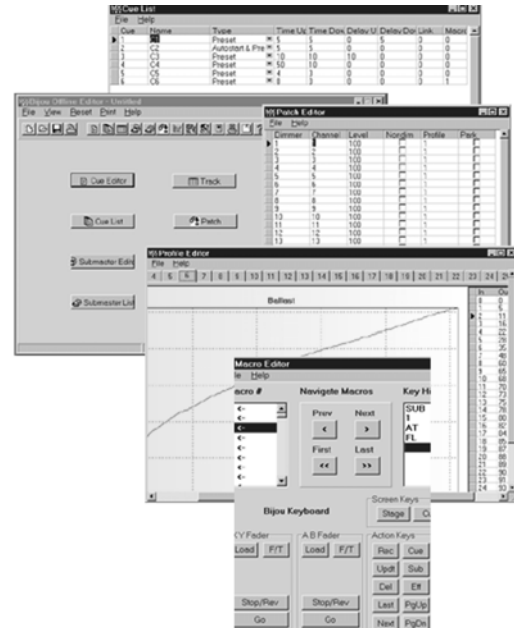


### Features

- Runs on Windows™ based systems
- Patch, Submaster, Effects, Cues, Macro, and Profile Windows
- Full function Bijou™ capabilities
- Writes and reads show disks
- Save files to disk
- Requires a Pentium™ PC with 4 MB RAM and 3 MB of hard disk space with an SVGA monitor.



### Description

Take full control of the Bijou™ console while away from the Bijou™. Bijou™ Offline Editor features all the functions of the Bijou™ console in one convenient software application. It gives light board operators an easy to use editing tool as well as off show storage space for their programs in the form of .bjc files.

The application is structured similarly to the console. All 512 channels can be edited and viewed individually in the Cue Editor or in groups within the Cue List and Track screens. All 288 Submasters can be set within the editor and reviewed within the Submaster List. There is even an Effects Editor for setting effects. In the Macro Screen, the simulated keypad offers users a simple "point and click" system. The Profile Screen has a "click and drag" graphical interface, which

makes it a snap to set customize settings.

With Bijou™ Offline Editor, incorporating various settings on the fly has never been easier. The Offline editor allows you to import cues, submasters, effects, macros, patches, and profiles independently. Piece a patch from one show with a profile from another while getting cues and submasters from another. The possibilities are endless.

Best of all, Bijou™ Offline Editor is available to our customers on either a 3½" floppy or as a free download from our website, and will run on most any Pentium™ based PC. There is no reason for any Bijou™ operator to be without it.

### Ordering Information

#### Bijou™ Offline Editor

- 3½" IBM Formatted Floppy
- Also available as a free download