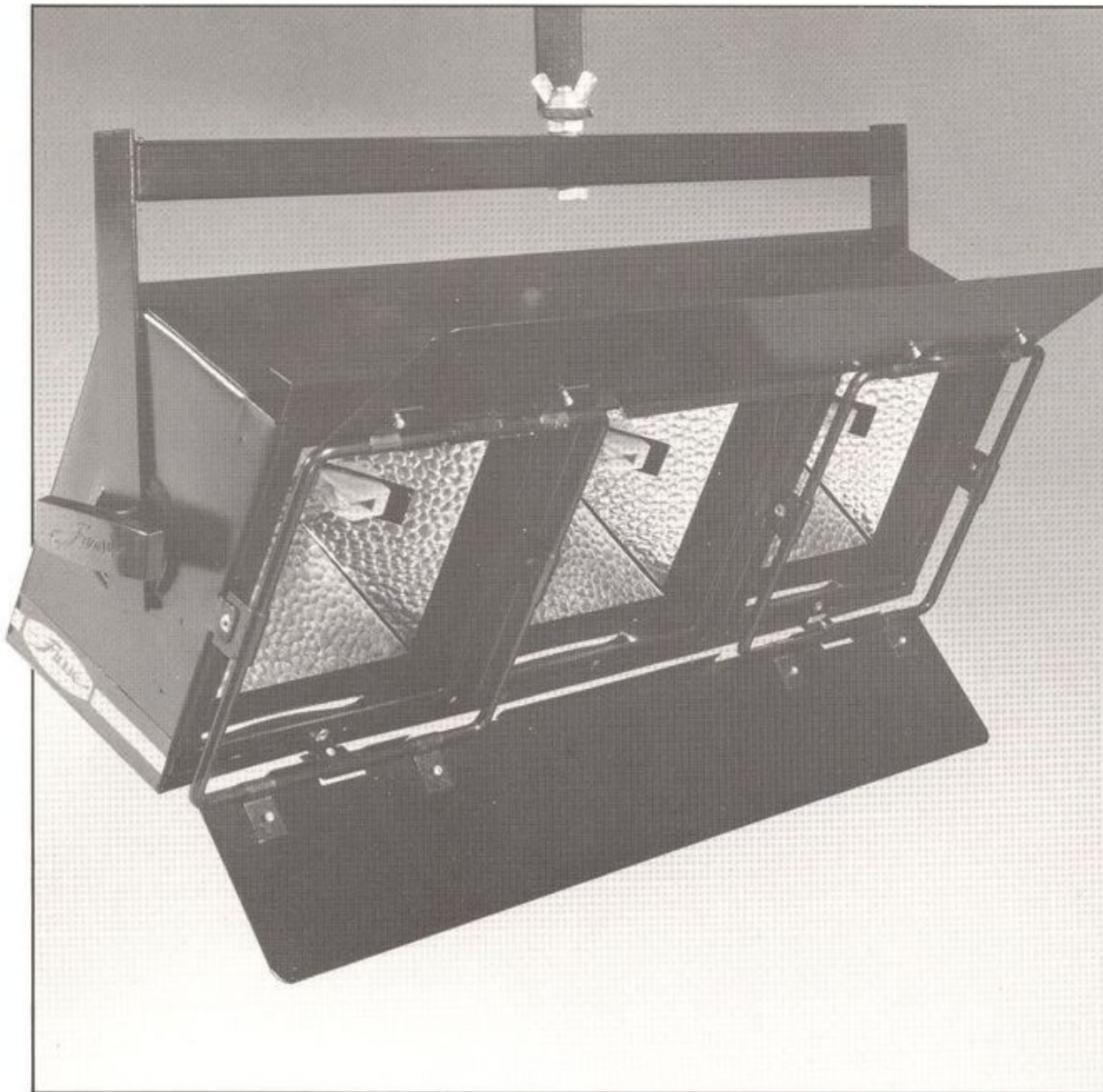




## LFL 3x250 Floodlight



### Dimensions

N.T.S.

### Weight

7.1 Kg. (exc. lamp)  
Carton Size  
160 x 610 x 290mm,  
0.028m<sup>3</sup>  
Packed Weight  
7.8 Kg. (exc. lamp)

### Environment Classification

IP 20

### Tilt

45° above horizontal to  
90° below.

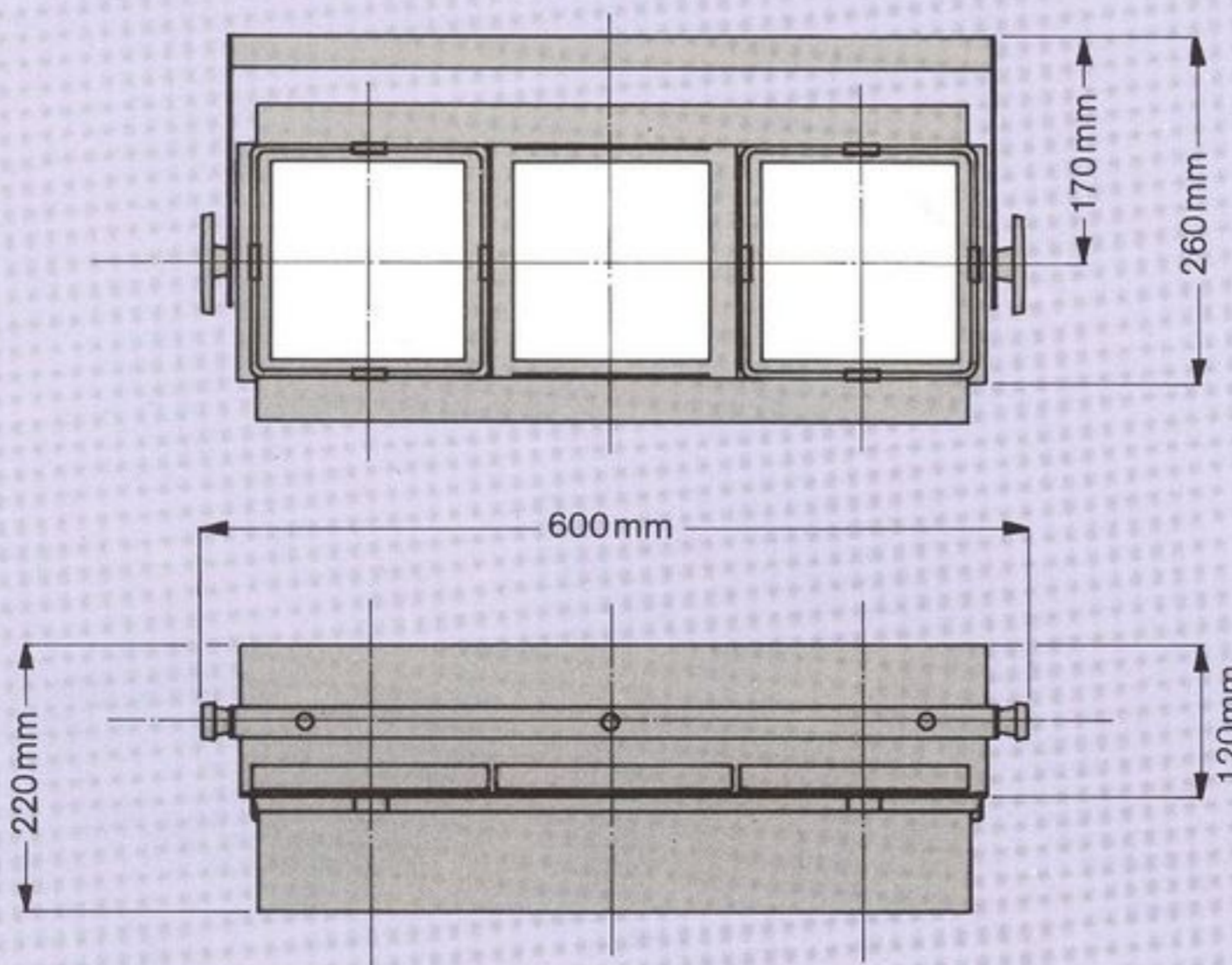
A three-compartment floodlight with high intensity fixed beam angle giving an even wash of light. This unit is ideally suited to colour mixing.

The luminaire is fitted with horizontal barn doors to control the vertical light spill.  
Maximum lamp size – 250 watt per compartment.  
Beam angle – 74°  
Maximum throw – 5m  
Armour glass safety/u.v. screen.  
Light weight robust sheet metal construction.

Each compartment fitted with guide for colour frame, three provided per unit.

Lamp access by removing safety screen.

This floodlight is part of a range of luminaires specifically designed for lighting performance areas.



### Accessories

Additional Colour Frame – CF. LFL. 250  
Safety Screen – SS. LFL. 250  
Pair of Feet – LFL. 1  
Plug Top 5-amp – ET40  
Plug Top 15-amp – ET52

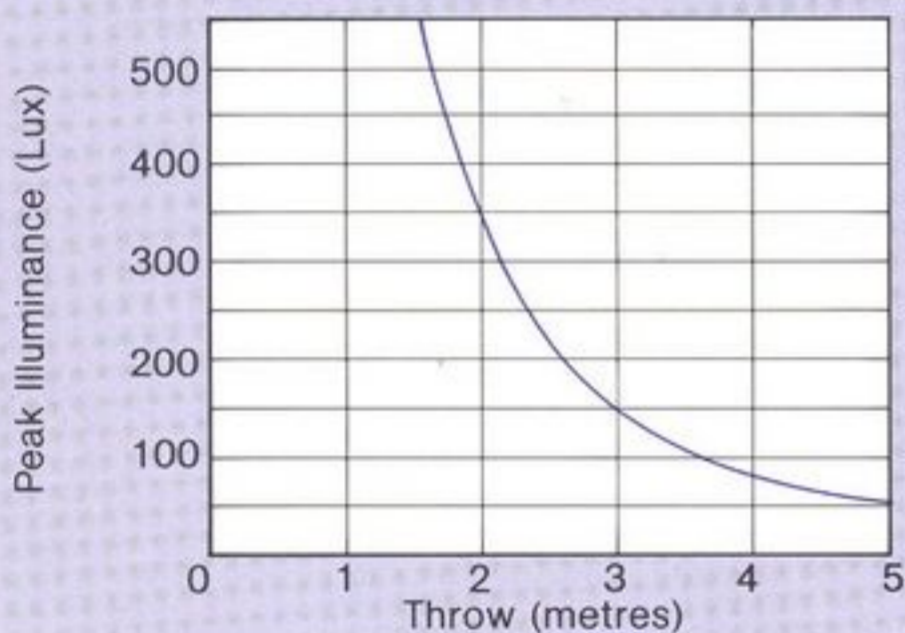


# LFL 3x250 Floodlight

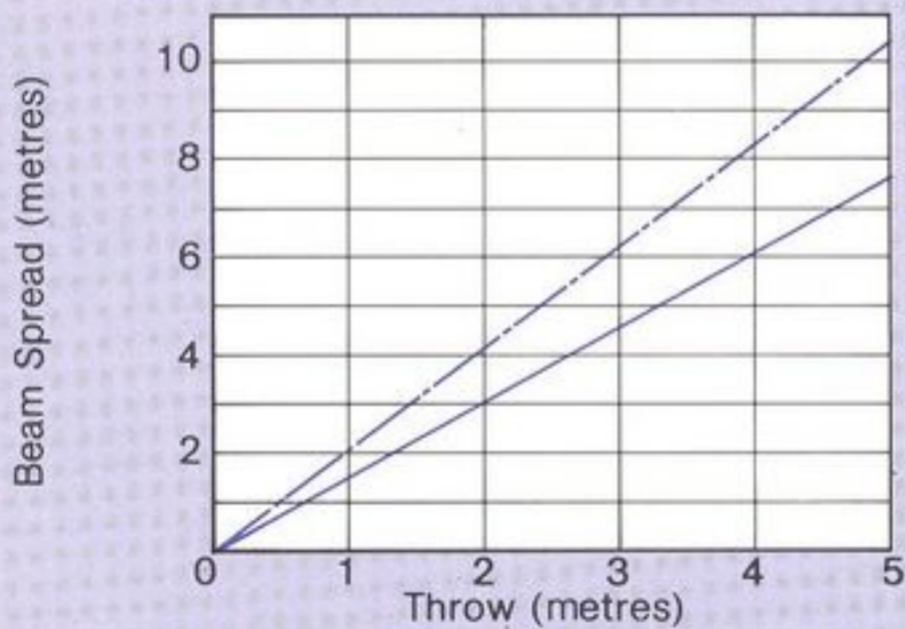
## Performance

	For each lamp compartment
Lamp Type	K15
Wattage	250
To be Lumens (nominal)	4000
Rated Life (hours)	2000
Peak Illuminance at 3m throw (Lux)	135

## Graphs indicate typical performance values (For each lamp compartment)



Lamp Type –  
K15 ~ 250 W



----- Field Angle (10% Peak Lux) ~ 93°  
————— Beam Angle (50% Peak Lux) ~ 74°

## Specification

### Body Construction

The luminaire is constructed from steel pressings which are spot welded together to form a rigid body. Adequate ventilation is provided to give maximum lamp life and internal baffles are fitted to reduce external surface temperatures and eliminate light leakage. Two horizontal hinged shutters (barn doors) are fitted to the front of the body to control vertical light spill.

### Trunnion Arm

The steel trunnion arm is fitted with locking knobs to allow controlled tilt. A bolt fastening is provided for suspending the luminaire.

### Optical System

**Reflector** – Each compartment is fitted with a reflector manufactured from aluminium embossed with a small hammer finish, polished and anodized.  
**Lamp Holder** – Each compartment is fitted with a pair of R7s holders mounted on a bracket and spaced to accept a 78mm lamp.

**U.V./Safety Screen** – Each compartment is fitted with a 4mm toughened glass safety screen.

### Accessory Attachment

Guides are provided on the front of each compartment of the unit to accept a safety screen and colour frame, both of which are supplied as standard.

### Electrical Connection

Each compartment is fitted with a 2m length of 3-core silicone cable securely attached at the point of entry to the luminaire by means of a strain relief gland.

### Finish

Heat resisting semi-matt black.

### Suitable Lamps

K15 – 250w.

### Mounting

Barrel Clamp – TF.13  
Double Swivel Wall Bracket – TF.22  
Ceiling Mounting Bracket – TF.17  
Heavy Base Telescopic Stand – MTS  
Collapsible Telescopic Stand – CTS  
Safety Chain – RCL.8

