



Technical Data

ASSEMBLY AND WIRING INSTRUCTIONS CP12 PATCH PANEL UNIT

This unit is designed to provide up to 12 patch ways using 5 or 15 amp leads per patch panel. Units can be mounted together to form any number of required ways. Each unit consists of two main parts, a back box (Fig. A) and face plate (Fig. B). The back box is designed to be wall mounted and is provided with 4 holes on the top to accommodate incoming cables from lighting outlets, either via conduit or via trunking. The centre of this box contains a terminal strip into the top of which these cables are connected. The two forms of connection are shown in Fig. C(i) and Fig. C(ii).

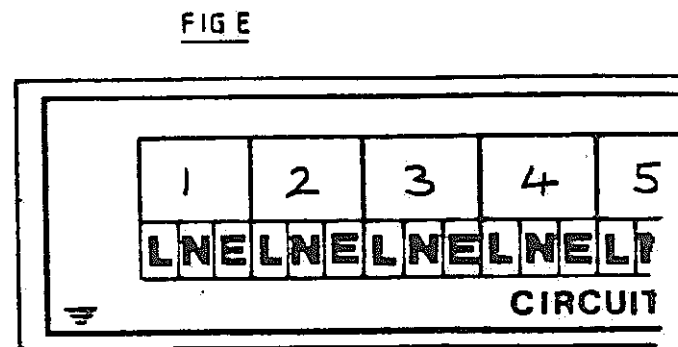
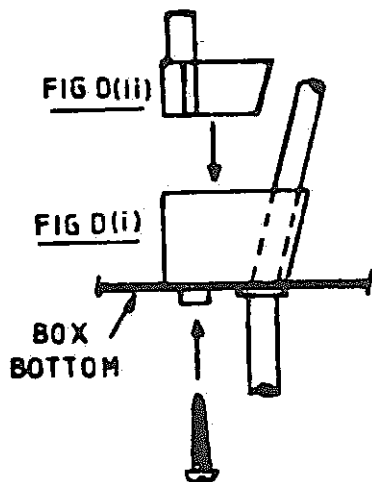
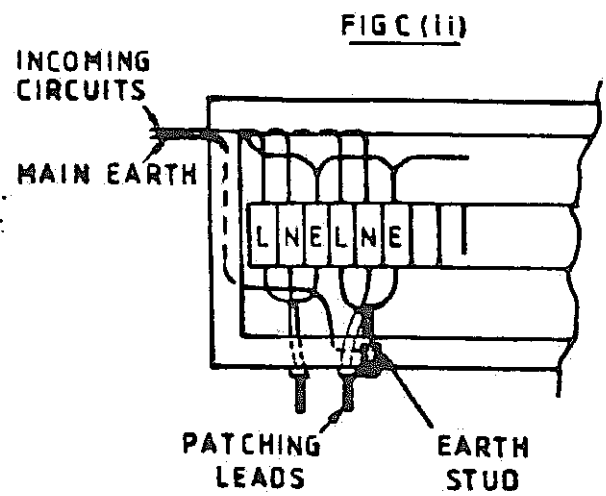
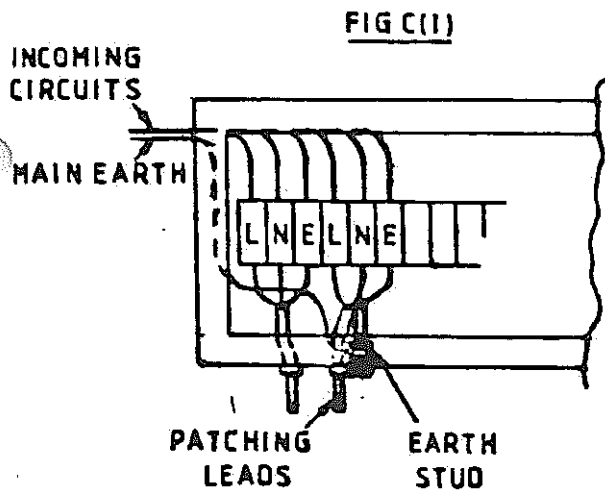
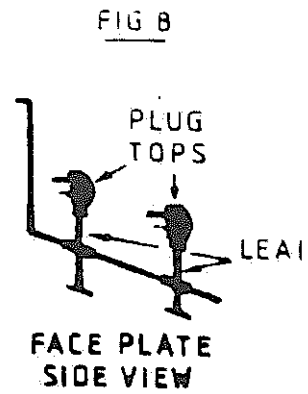
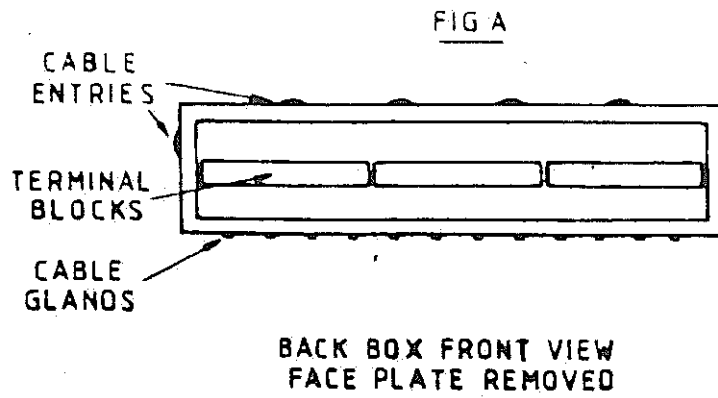
It is important that the continuity of earthing be maintained. All patch panels and dimmer racks should be interconnected by a permanently installed earth connection, two earth terminals being provided for this purpose within the back box. Two holes are provided, one on each side of this box, to enable the units to be easily interconnected when required.

All wiring should be of the correct size to suit the circuit loads, either 5 or 15 amps as appropriate, based on the patching leads provided. These leads are fitted with 5 or 15 amp pin plugs to suit the outlets mounted on the dimmer racks, the quantity being determined by the individual installation, with a maximum of 12 being provided to each panel. These panels should be so positioned that any of the patching leads will reach all of the dimmer outlets.

Installation of the leads is carried out by fitting them down through the holes in the face plate (Fig. B) and up through the holes in the base of the back box (Fig. A), so that the bare ends of the cables are adjacent to the terminal strip. The plug tops will then rest on the shelf on the face plate. Before fitting these patch leads, the cable grommets (Fig. D) should be inserted into the holes at the base of the back box. Figure D(i) should be fitted first, and the cable passed through and made off to the terminals as shown. Figure D(ii) should then be added with the pillar section towards the top of the box and fixed in place with the screw provided, clamping the cable firmly into the position.

After installation, the circuit identification label on the inside of the face plate should be completed, similar to that shown in Figure E and the circuit numbers added to the tops of the plugs from the sheet provided, with a different number to each plug for ease of identification.

The system is now completed and the plugs can be connected to the dimmer outlets to suit the individual production requirements.





THEATRE EQUIPMENT

CORD TYPE PATCH PANEL

FOR 5A & 15A PLUG TOPS

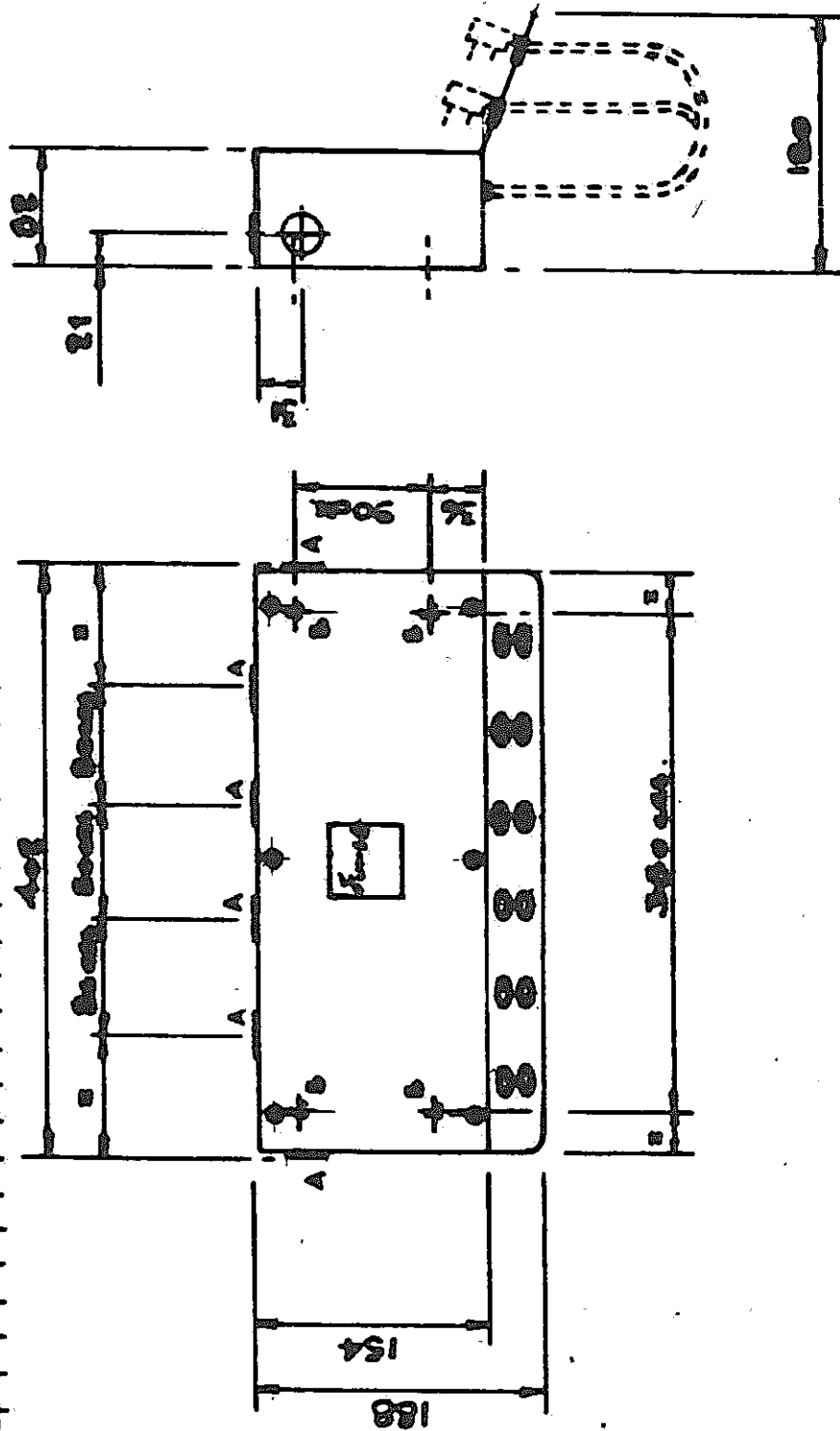
REF NO

CP 12

SHEET NO

CIRCULATION

DEV FILE



'A' - CONDUIT / CABLE KNOCKOUTS

HOLE SIZE 25mm DIA.

'B' - FIXING HOLES IN REAR OF PANEL

HOLE SIZE 6mm DIA.

ISSUED BY

APPROVED BY

SIGNED *L. S. S. S.*

SIGNED

DATE 20.1.84

DATE