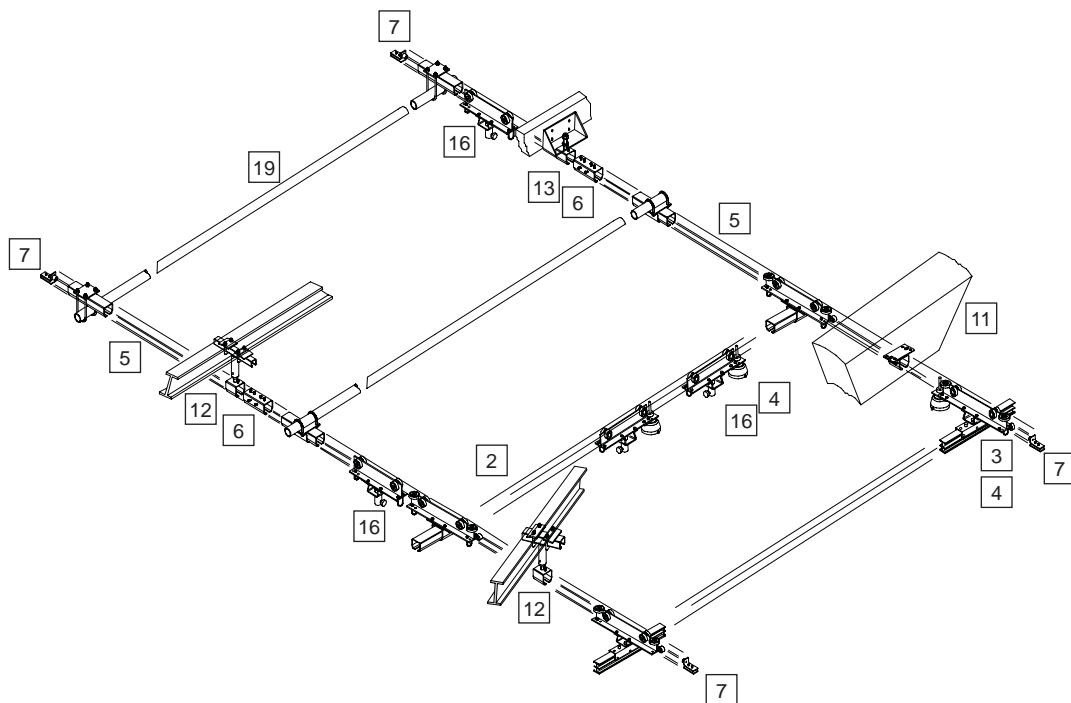


SUPERRIG™

Strand's SuperRig adds to the established flexibility of Strand's LightRig system by providing both heavy duty and light duty track and beam solutions for all lighting positioning requirements.

- ❑ Allows lights to be positioned anywhere in the studio
- ❑ Ideal suspension platform for single point and self climbing hoist systems
- ❑ Flexibility gives fast turn around times between productions
- ❑ Cross beams roll freely without jamming
- ❑ Compact closed height
- ❑ Economical, easily installed, low maintenance system
- ❑ Adaptable for installation in all studio structures
- ❑ Economical system with robust, quality built parts



See also drawing next page

Secondary Grid Components

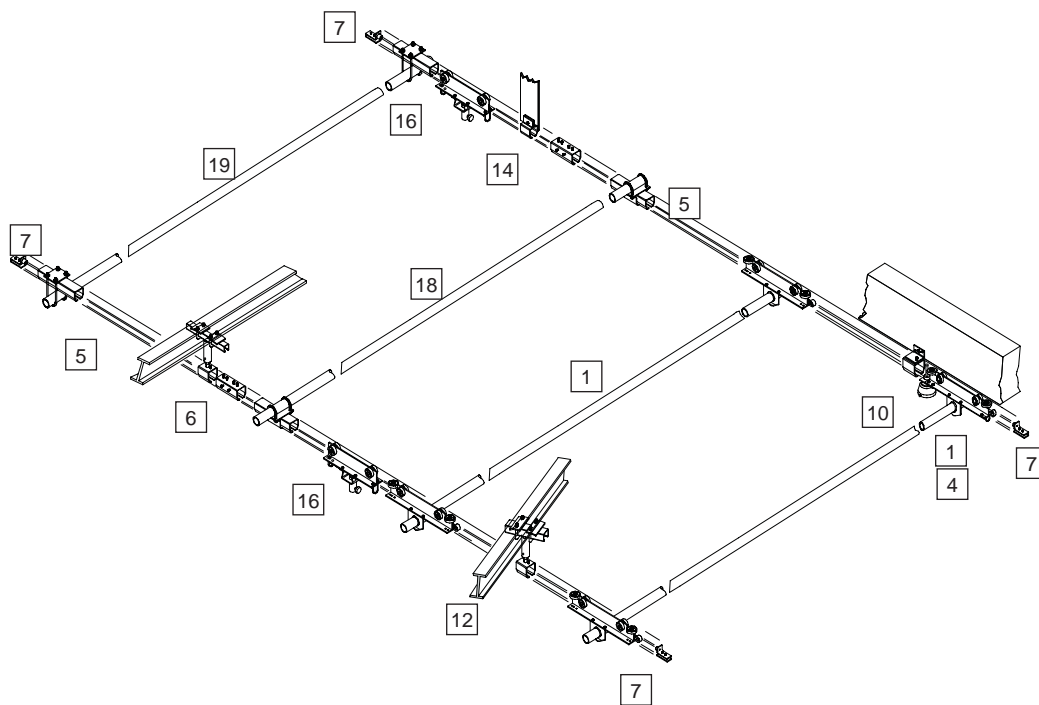
- 1 SR Rolling Pipe Kit
- 2 SR Rolling Track Kit
- 3 SR Rolling Rail Kit
- 4 SR Pole Operated Brake Kit

Primary Grid Components

- 5 SuperRig Support Track
- 6 SR Support Track Joint
- 7 SR Adjustable End Stop (4)
- 8 SR Cable Transfer Runner (5)
- 9 SR Equipment Support Plate (2)

Installation Accessories

- 10 SR Track Side Mount Bracket
- 11 SR Ceiling Track Support
- 12 SR Adjustable I Beam Hanger
- 13 SR Adjustable Track Support
- 14 SR Track Clamp Bracket
- 15 SR Weld on Support Bracket



SuperRig is a cost effective, flexible support system for studios from 4m or more in height providing full flexibility in horizontal adjustment of luminaire positions. Strand's comprehensive range of studio suspension equipment products can then be used to provide the vertical height adjustment - Pole Operated Pantographs, Spring Pantographs and Lightscoops in smaller studios through to Motorised Pantographs and Self Climbing Hoists in larger studios.

The two schematic drawings on this and the previous page show many of the components in a general layout of the system with various typical trackmounting arrangements.

The system comprises:

- A fixed primary grid of robust, profiled steel track.
- An extensive range of installation accessories to suspend the fixed tracks from the studio structure.
- Secondary cross beams suspended from the primary grid by wheeled carriages, available in various forms; pipe (aluminium or steel), SuperRig track or extruded aluminium LightRig rail.
- A range of suspension components enabling luminaires and other equipment to be hung from and traversed along either fixed tracks or rolling cross beams.

Primary SuperRig tracks are based on profiled steel sections with zinc plate finish and are available in a number of standard lengths which can be shortened to suit specific site requirements. Individual lengths can be linked by using the support track joints. End stops are available to preventing carriage overtravel.

A comprehensive range of support brackets is available to suspend the fixed primary grid of SuperRig tracks from a suitable load bearing structure within the building. Supports must be positioned in accordance with the system's specified loading limits.

1. SR Rolling Pipe Kit

Cat No Description

31001 SR Rolling Pipe (aluminium) Kit - 3m

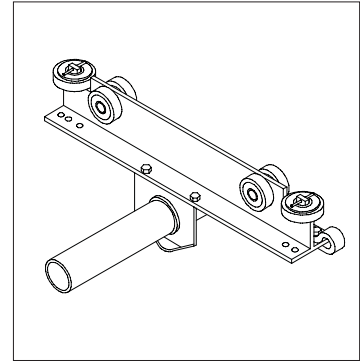
31007 SR Rolling Pipe (steel) Kit 3m

31027 SR Rolling Pipe (aluminium) Kit -2.5m

31028 SR Rolling Pipe (steel) Kit -2.5m

All kits comprise of two unbraked track carriages with a 48mm Ø pipe in 2.5m or 3m lengths. Maximum 2880mm fixed track pitch on 3m kits supporting a uniformly distributed load of 100 kg.

Maximum 2380mm pitch on 2.5m supporting 140 kg.

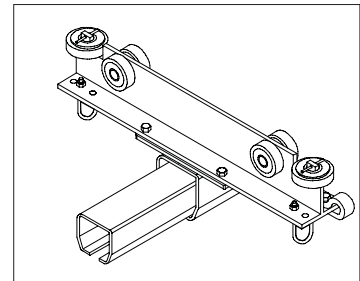


2. SR Rolling Track Kit

Cat No Description

31008 SR Rolling Track Kit - 3m

Comprises two unbraked track carriages with a 3m length of SuperRig track. Maximum 2880mm fixed track pitch. Supports uniformly distributed load of 140 kg.

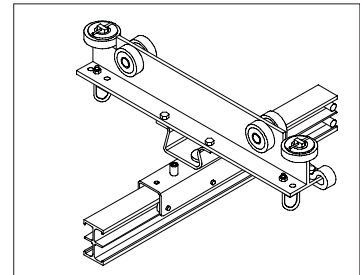


3. SR Rolling Rail Kit

Cat No Description

31009 SR Rolling Rail Kit -3m

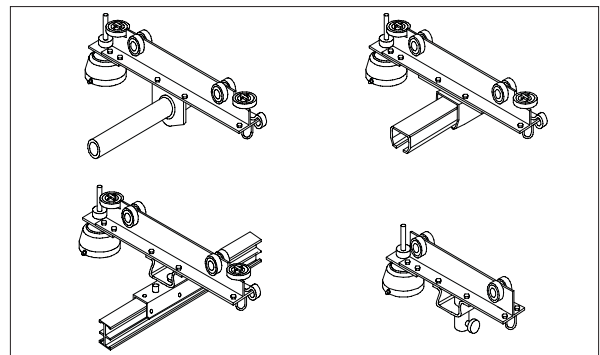
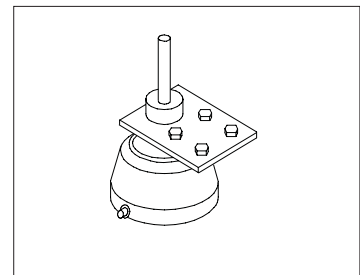
Comprises two unbraked, articulated swivel track carriages with a 3m length of aluminium LightRig rail. Maximum 2380mm fixed track pitch supports uniformly distributed load 100 kg. Maximum rail overhang 20% of fixed track pitch.



4. SR Pole Operated Brake Kit

Cat No Description

31010 SR Pole Operated Brake Kit. This assembly can be fitted to any of the track carriages to provide a traverse brake and towing point.

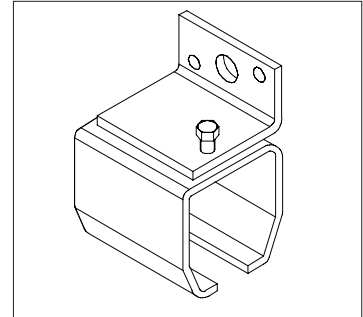


A variety of cross beam systems can be suspended from the fixed track;
 - Rolling Pipe - Rolling Track - Rolling Rail. Each is suspended from the fixed track by wheeled carriages, horizontal guide rollers resist jamming as the beam is traversed along the track. Rolling pipe and rolling track kits traverse at 90° to the fixed tracks, rolling rails are articulated to traverse at angles up to 15°. Pole operated brakes can be fitted to all carriages if required.

10. Track Side Mount Bracket

Cat No Description

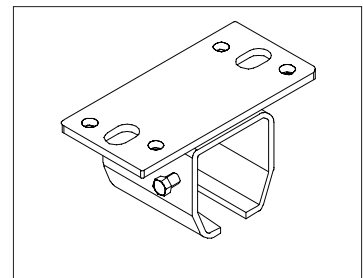
31013 The range of mounting holes in this support bracket allow the track to be fixed by one suitable M16 or two M10 fasteners directly to the side of an intermediate support structure.



11. SR Ceiling Track Support

Cat No Description

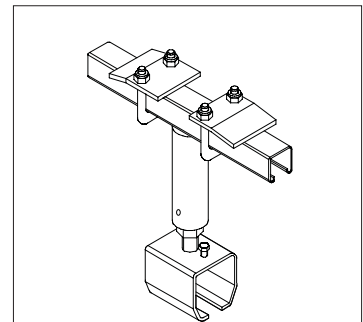
31014 This support bracket allows the track to be fixed directly to a suitable flat ceiling or to an intermediate support structure. The mounting holes accommodate four M10 or two M16 fasteners.



12. Adjustable I Beam Hanger

Cat No Description

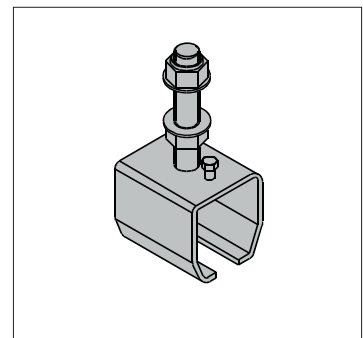
31015 This hanger arrangement allows the fixed tracks to be supported directly below an I beam (76mm up to 203mm flange width) and also provides vertical height adjustment for the track. The horizontal I beam can be orientated at any angle relative to the fixed track.



13. SR Adjustable Track Support

Cat No Description

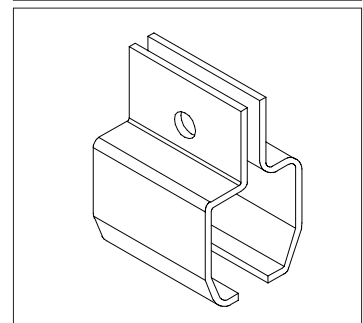
31016 The adjustable support allows the track to be supported from an appropriate overhead structure and provides 102mm of vertical height adjustment.



14. SR Track Clamp Bracket

Cat No Description

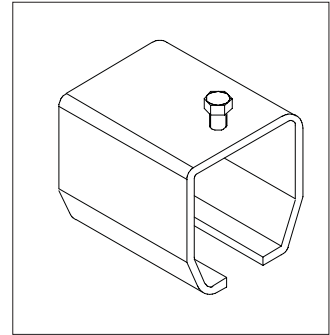
31017 This split clamp bracket fits around the fixed tracks providing an alternative means of suspension for the tracks.



15. SR Weld on Support Bracket

Cat No Description

31018 Special customised track suspensions can be fabricated using this bracket. Brackets are supplied unplated to allow for welding (not shown on main illustration)



Lighting Suspension Components

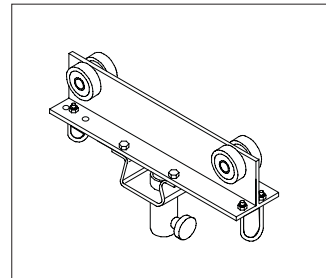
16. SR Track Trolley

Cat No Description

31019 With 29mm Socket

31020 With DIN Socket

For use with the fixed or rolling tracks providing an unbraked trolley for luminaire mounting via a 29mm or 28mm DIN socket.



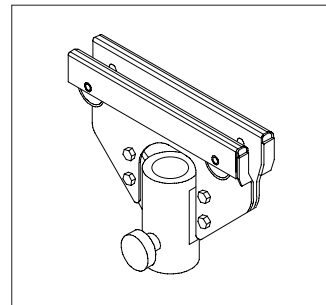
17. SR Addalite Trolley

Cat No Description

31021 With 29mm Socket

31022 With DIN Socket

For completed installations luminaires with 29mm or 28mm DIN spigots can be added to the fixed or rolling tracks using the Addalite trolley. (not shown on main illustration)



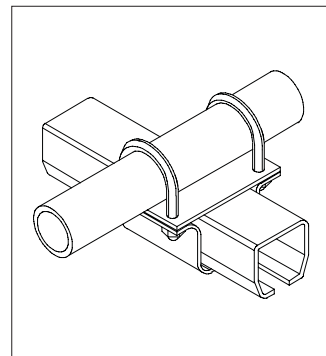
18. SR Addalite Overtrack Pipe

Cat No Description

31023 With 3m Aluminium Pipe

31024 With 3m Steel Pipe

Provides a fixed 48mm diameter pipe (steel or aluminium) for the suspension of additional luminaires without restricting track trolley travel. The pipe supports a uniformly distributed load of 100kg between parallel SuperRig support tracks spaced up to 2880mm apart.



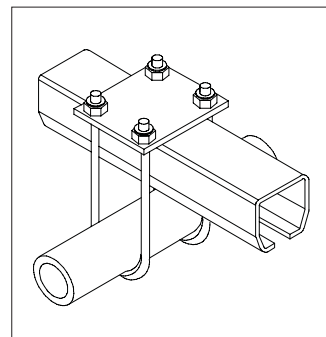
19. SR Addalite Undertrack Pipe

CatNo Description

31025 With 3m Aluminium Pipe

31026 With 3m Steel Pipe

Provides a fixed 48mm diameter pipe (steel or aluminium) for the suspension of additional luminaires. The pipe supports a uniformly distributed load of 100kg between parallel SuperRig support tracks spaced up to 2880mm apart.



Ordering information

CatNo	Secondary Grid Components	Weight	SWL
31001	SR Rolling Pipe Aluminium Kit - 3m	10.8kg	100kg
31027	SR Rolling Pipe Aluminium Kit - 2.5m	10.0kg	140kg
31007	SR Rolling Pipe Steel Kit - 3m	18.7kg	100kg
31028	SR Rolling Pipe Steel Kit - 2.5m	16.5kg	140kg
31008	SR Rolling Track Kit - 3m	24.2kg	140kg
31009	SR Rolling Rail Kit -3m	11.9kg	100kg
31010	SR Pole Operated Brake Kit	1.9kg	-

Cat No	Primary Grid Components	Weight	SWL
31002	SR Support Track - 2m	12.2kg	-
31003	SR Support Track - 3m	18.3kg	-
31004	SR Support Track - 4m	24.4kg	-
31005	SR Support Track - 5m	30.5kg	-
31006	SR Support Track - 6m	36.6kg	-
31012	SR Support Track Joint	2.1kg	-
31011	SR Adjustable End Stop (4)	2.5kg	-
31029	SR Cable Transfer Runner (5)	1.0kg	-
31030	SR Equipment Support Plate (2)	5.2kg	25kg

Cat No	Installation Accessories	Weight	SWL
31013	SR Track Side Mount Bracket	1.4kg	400kg
31014	SR Ceiling Track Support	1.6kg	400kg
31015	SR Adjustable I Beam Hanger	3.3kg	400kg
31016	SR Adjustable Track Support	1.5kg	400kg
31017	SR Track Clamp Bracket	1.5kg	400kg
31018	SR Weld on Support Bracket	1.1kg	400kg

Cat No	Suspension Components	Weight	SWL
31019	SR Track Trolley, 29mm Socket	2.8kg	70kg
31020	SR Track Trolley, 28mm DIN Socket	2.9kg	70kg
31021	SR Addalite Trolley, 29mm Socket	2.8kg	60kg
31022	SR Addalite Trolley, 28mm DIN Socket	2.9kg	60kg
31023	SR Addalite Overtrack Aluminium Pipe	9.2kg	100kg
31024	SR Addalite Overtrack Steel Pipe	17.1kg	100kg
31025	SR Addalite Undertrack Aluminium Pipe	8.8kg	100kg
31026	SR Addalite Undertrack Steel Pipe	16.7kg	100kg

Cat No	System Accessories	Weight	SWL
38001	Brake Barrel Trolley, 29mm Socket	2.5kg	75kg
38003	Brake Barrel Trolley, 28mm DIN Socket	2.9kg	75kg
38010	Spigot Anti Rotation Pin, 28mm DIN	-	-
82012	Luminaire Hook Clamp with 29mm Socket	1.1kg	50kg
82003	Safety Bond - 75kg	-	75kg
82002	Luminaire Safety Bond - 50kg	-	50kg
82001	Luminaire Safety Bond - 25kg	-	25kg
82140	Adjustable Operating Pole 1.4m to 4.0m	-	-
82115	Cranked Operating Pole - 1.5m	-	-
82125	Cranked Operating Pole - 2.5m	-	-
82135	Cranked Operating Pole - 3.5m	-	-
82145	Cranked Operating Pole - 4.5m	-	-

System loading limits and installation requirements

All support brackets, trolleys, rolling beams and other suspension components are clearly labelled with their associated safe working loads. These figures must never be exceeded. Individual component weights are printed in this Data Sheet. Further details of each component are provided on the instruction sheet supplied with each item.

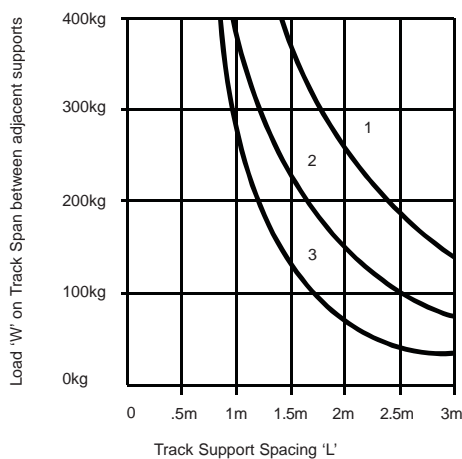
The versatility of the SuperRig system allows many loading permutations on the fixed tracks. The loading graph below shows typical examples for a uniformly distributed load, single point load per span and two point loads per span. Using this graph the maximum distance between track supports can be then be determined by following the appropriate loading curve and the system layout planned accordingly.

Note:

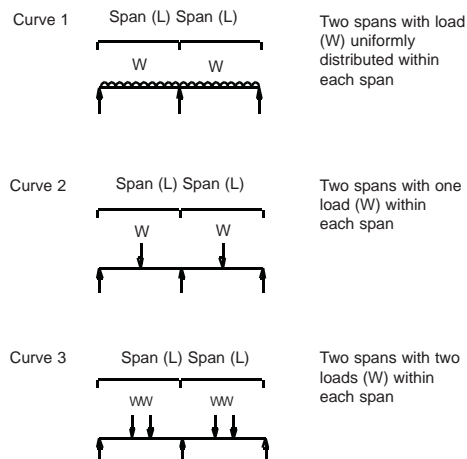
The centre of all track joints must be within 200mm of a support bracket, track lengths must be selected to suit.

The load bearing structure must be capable of supporting the entire system weight with maximum loads applied and distributed in line with the systems specified layout.

It is recommended that the maximum loading information on which the system is based is clearly displayed within the studio.



Maximum SuperRig Support Track Loading
(two span system)



The Company reserves the right to make any variation in design or construction to the equipment described. © Strand Lighting Ltd 1998. Strand™ and Strand Lighting™ are trade marks of Strand Lighting Limited and Strand Lighting Inc.