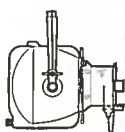


Rank Strand Profile Spots



Max. Width 10½ in.
(265 mm)
Weight 7 lb. (3.2 kg)
Scale 1 : 20

Patt. 23, 23F, 23W

500W

Pressure die-cast body with top-hinged rear access to P28s holder for 500W Class T/1 lamp, 7-in. (180-mm) dia. faceted ellipsoidal rear, and annular front, reflectors. Four beam-shaping shutters and gate runners. Sliding lens tube with double runners and a 4-in. (100-mm) square colour frame. Lens variations:

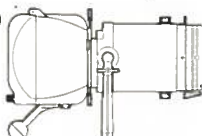
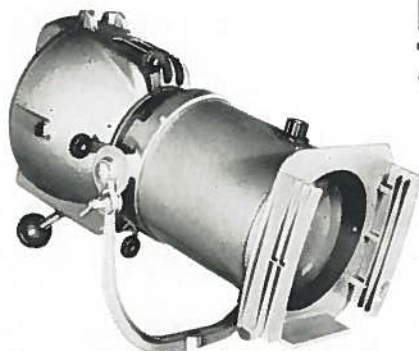
Patt. 23—3½×5-in. (90×125-mm) p.c. 20° max.

Patt. 23F—3½×4-in. (90×100-mm) Fresnel, 30° max.

Patt. 23W—two 3½×5-in. (90×125-mm) p.c. 36° max.

Iris diaphragm, ref. 363; set of four masks, ref. 362.

Max. Width 11½ in.
(285 mm)
Weight 12¼ lb. (5.6 kg)
Scale 1 : 20

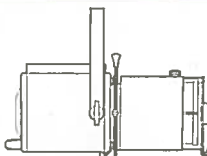


Patt. 23N

500W

Pressure die-cast body, rear handle fitted, with top-hinged rear access to P28s holder for 500W Class T/1 lamp, 7-in. (180-mm) dia. faceted ellipsoidal rear, and annular front, reflectors. Four beam-shaping shutters and gate runners with removable iris diaphragm. Sliding lens tube with 6×9-in. (150×230-mm) p.c. lens providing 11° max. spread. Die-cast lens front with double runners and a 6½-in. (165-mm) square colour frame.

Spigot adaptor for telescopic stand, ref. 484.



Max. Width 12 in.
(305 mm)
Weight 14½ lb. (6.6 kg)
Scale 1 : 20

Patt. 763, 763F, 763W Tungsten Halogen 1000W
Patt. 263, 263W 1000W

Pressed steel body with bottom-hinged front access. 6½-in. (160-mm) dia. faceted ellipsoidal reflector. Four beam-shaping shutters and gate runners. Sliding lens tube with 6-in. (150-mm) diameter lens. Die-cast front.

Patt. 763 (illustrated) with GX9.5 holder for 1000W Class T/9 tungsten halogen lamp (400 hour obj. life). Twin p.c. lens providing 20° max. beam spread.

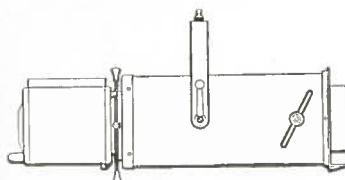
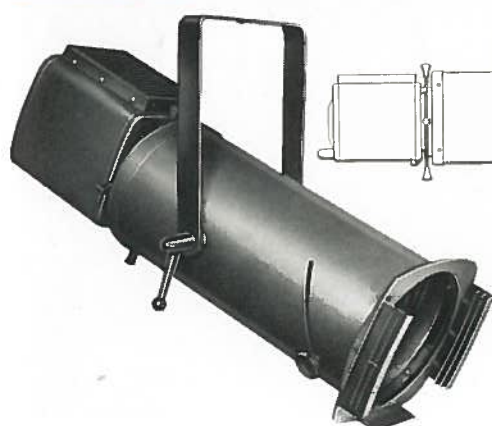
Patt. 763F—as above but Fresnel lens, 24° max.

Patt. 763W—as 763, but wide 30° max. beam spread.

Patt. 263—with pre-tilted P28s holder for 1000W Class T/4 lamp (200 hour obj. life), Fresnel lens, 20° max.

Patt. 263W—as above, but p.c. lens. 26° max. spread.

Iris diaphragm, ref. 625.



Max. Width 12 in.
(305 mm)
Weight 31 lb. (14 kg)
Scale 1 : 20

Patt. 773

Tungsten Halogen 1000W

Long Range Profile Spot

Pressed steel body with bottom-hinged lamphouse. GX9.5 holder for Class T/9 1000W tungsten halogen lamp (400 hour obj. life). 6½-in. (160-mm) diameter faceted ellipsoidal reflector. Four beam-shaping shutters and gate runners. Helically sliding internal lens tube with twin 8-in. (200 mm) diameter long focus p.c. lenses providing narrow 10.5° max. beam spread. Die-cast front with double runners and a 8½-in. (215-mm) square colour frame.

Iris diaphragm, ref. 625.