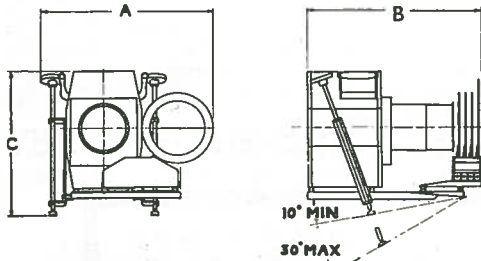


LANTERNS WITH REMOTE CONTROL COLOUR FILTERS

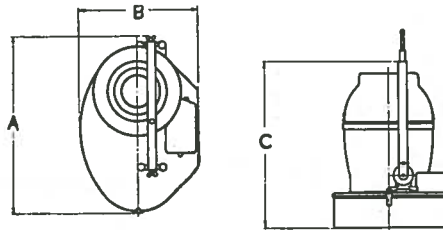
Solenoid selected motor driven semaphore type (leaflet C85)

(Prices include 4 removable colour frames, mechanism, tails wired to multi-way plug and a socket box but not lamps or colour filters)

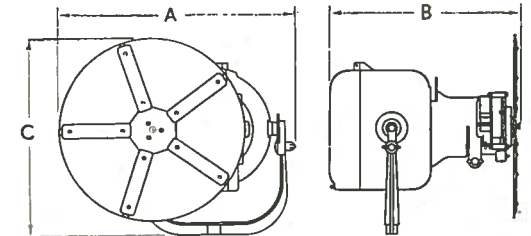
Catalogue Ref.	Leaflet	Description	Watts	Lamp		Beam	Colour Frame Ref.	Width A ins.	Depth B ins.	Height Max. ins.	Height C Min. ins.	Weight lbs.	Price		
				Class	Cap								£	s	d
Patt. 53C/CU	C.85	Mirror Spot with 4 colours and white, unenclosed	1000	T or B	P.40	3/19°	325	24	24	25	28½	56	80	10	0
Patt. 53C/CE	C.85	As above, enclosed													
Patt. 58C/CU	C.85	Pageant Lantern with 4 colours and white, unenclosed	1000	T	P.40	11/17°	99	26½	18	25	21½	60	75	10	0
Patt. 143C/CE	C.85	As above, enclosed													
Patt. 143C/CE	C.85	Fresnel Spot with 4 colours and white, unenclosed	1000	B.1	GES	25/35°	100	26½	18	25¼	44	89	0	0	
Patt. 76C/CE	C.85	As above, enclosed													1000
Patt. 93C/CU	C.85	Acting Area Flood with 4 colours and white, enclosed	1000	A.1	P.40	3/8°	99	28	40½	35	30	75	123	0	
Patt. 93NC/CU	—	Long-range Mirror Spot with 4 colours and white, unenclosed													1000
		Extra long range Mirror Spot as above													



Principal dimensions Patt. 53 type C/CU, see table above.



Principal dimensions Patt. 76 type C/CE, see table above.



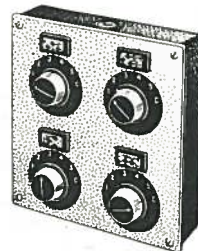
Principal dimensions with colour change wheel.
Patt. 23 Mirror Spot A=15½", B=15", C=14½"
Patt. 123 Fresnel Spot A=20", B=12", C=17½"

C/C LANTERN CONTROL BOXES

Complete with 5 switches per lantern (4 colours and white).
Master Change Push and 165-volt rectifier for lantern coils.

Catalogue Ref.	Description	Width ins.	Height ins.	Depth ins.	Weight lbs.	Price £ s d
1	1 way	13	8	10	17	23 8 0
2	2 "					31 1 0
3	3 "	18	8	12	20	39 12 0
4	4 "					47 14 0
5	5 "	20	10	12	40	61 13 0
6	6 "					65 14 0
7	7 "	28	10	14	54	69 6 0
8	8 "					72 18 0
9	9 "	28	10	14	54	84 3 0
10	10 "					88 4 0
11	11 "	28	10	14	54	91 16 0
12	12 "					95 17 0

Patt. 23 and 123 COLOUR CHANGE WHEELS AND REMOTE CONTROLS



Switches for five positions and continuous running. One wheel per way only. Master fitted to 385, 386, 387 and 389

Ref.	Description	Weight lbs.	Price £ s d
Ref. 382	Motor driven wheel for 5 colours to fit colour runner on Patt. 23, 23F and 23W lanterns. Weight 2½lb.	9 10 0	
Ref. 400	Ditto for Patt. 23N/R.H. Weight 5½lb	12 10 0	
Ref. 410	Ditto for Patt. 123. Weight 5lb	12 10 0	
Ref. 388	Set of 5 Cinemoid colours for 382 above	3 6	
Ref. 390	Ditto for 400 or 410 above	4 6	

CONTROL BOXES

Catalogue Ref.	Description	Width ins.	Depth ins.	Height ins.	Weight lbs.	Price £ s d
383	1 way	4	2½	4	1½	3 0 0
384	2 "	7½		4	3	5 10 0
385	4 "	7½	2½	8	4½	10 0 0
386	8 "	11		13	9	20 0 0
387	12 "	16½	2½	12	12	30 0 0
389	6 "	13		8	7	15 0 0