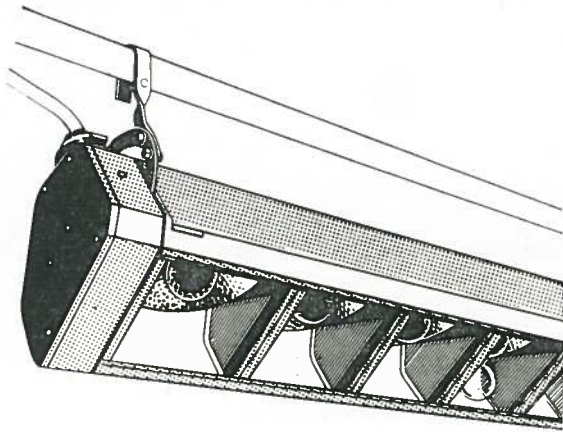
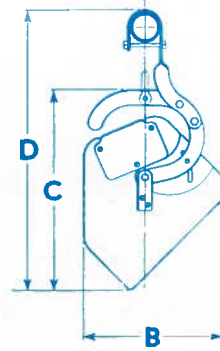


## FOOTLIGHTS, BATTENS, GROUND ROW AND LENGTHS

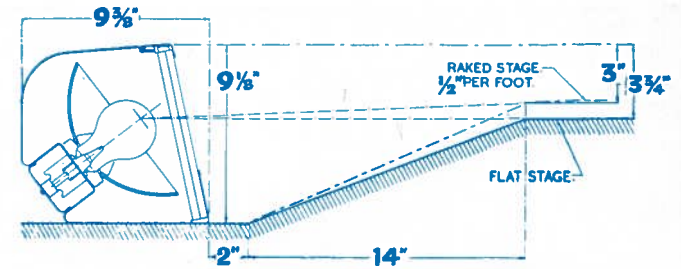
"S" type standard equipment has compartments at 9-inch centres fitted ES holder anodised aluminium (ref. 475) reflector and one frame for colour to each. Reflector is mounted in two position spider giving choice of wide angle and medium angle beams for all "S" type battens. Footlights and Groundrows have reflectors in the wide position only. Wired as standard three colours, one circuit each to terminals at each end of wiring trough. Finish: hard hammer-grey except footlights which are black crystalline to avoid reflection. **Prices do not include lamps or colour filters.**



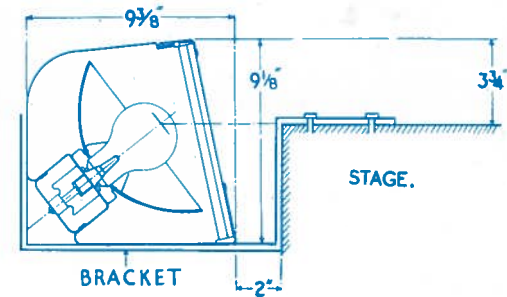
'S' Batten shown with the addition of a 231 batten connector box, see p18



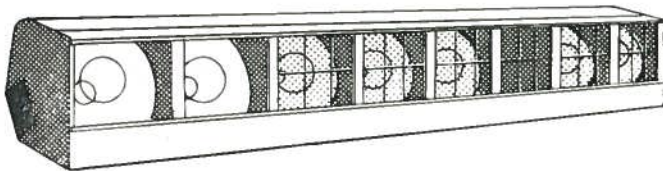
Section 'S' Batten



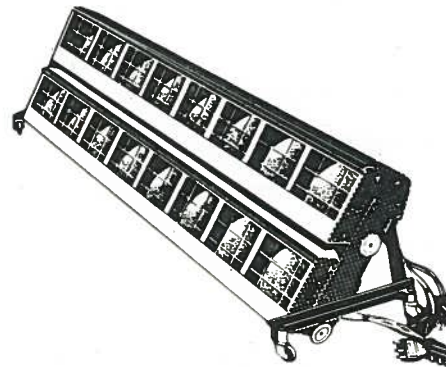
'S' footlight. When placed in a trough the dimensions are shown in the top diagram.



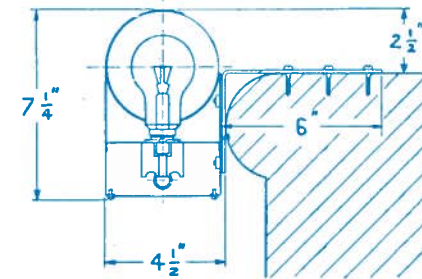
Position of 'S' footlight relative to stage where there is no trough.



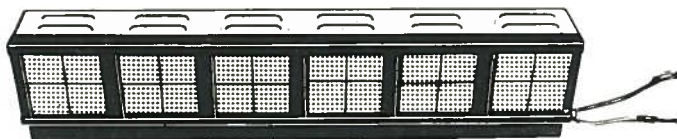
'S' Footlight



'S' Double Groundrow



Junior footlight bracketed from stage.



'L' Junior Groundrow or Length or Batten