

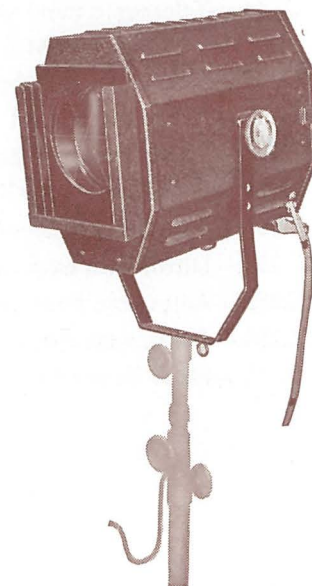
STRAND SPOTLIGHTS

PATTERN 43 STAGE SPOTLIGHT 1,000 WATT

This Spotlight is suitable for all general stage purposes, including lighting the forestage from Front of House in small theatres. Also suitable for Cabaret work, etc.

SPECIFICATION

Lantern constructed in sheet steel, efficiently ventilated. Access to lamp by hinged door at rear. 6-inch diameter, 10-inch focus heat resisting plano-convex lens. Type 43 tray, giving vertical and axial adjustment for lamp, complete with special anodised aluminium reflector. Focussing by knob under lantern. Fitted with runners to take two millboard colour frames on front. The Tilting Fork has a 1/2-inch Whitworth Stem (for suspension or insertion in stand) and eyelet for safety chain (not included). The lantern is locked in position by two hand wheels, and a handle is provided at the rear. Wired with 3-foot heat-resisting tails without plugs. Finish: black crystalline enamel outside, matt black inside.

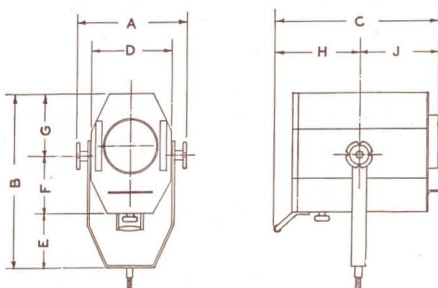


Lamps.—1,000-watt Class B.1 Round Bulb Projector with G.E.S. Cap, or 1,000-watt Class A.1 Tubular with G.E.S. Cap (max. permissible angle of tilt 22½°).

Beam Angles.—Maximum 42°, minimum 13°.

Maximum Throw.—Normally used up to 45 feet.

Weight.—Nett weight 25 lbs.



DIMENSIONS

	Ft.	In.		Ft.	In.
A	...	1	F	...	6 3/4
B	...	8	G	...	6
C	...	5 1/2	H	...	8
D	...	9	J	...	8 1/4
E	...	6 1/2			

PRICE (exclusive of lamp)
C. 85.—Linen-bound millboard colour frames (10 3/4-inches × 7 1/2-inches)	per doz
C. 86.—Ditto, with gelatine colours	"
C. 87.—Ditto, with "Cinemoid" colours	"
C.335.—Extra 6-inch diameter 10-inch focus heat resisting plano-convex lenses	each
C.290.—Extra anodised aluminium reflectors	"
C. 88.—Spotting attachment with three masks, giving four sizes of spots (weight 5 1/2 lbs.)	"
C.104.—Iris diaphragm	"
C.185.—15-amp. 3-pin moulded connectors	per pair

(continued overleaf)

HEAD OFFICE AND SHOWROOMS
29, KING STREET, LONDON, W.C.2
 SALES AND GOODS - 24, FLORAL ST., W.C.2
 TEMPLE BAR 4444 GRAMS: SPOTLITE RAND LONDON

BRANCHES
313, OLDHAM ROAD, MANCHESTER 10
 COLLYHURST 2736
62, DAWSON ST., DUBLIN - DUB 74030