

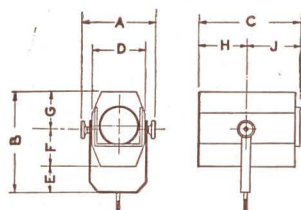
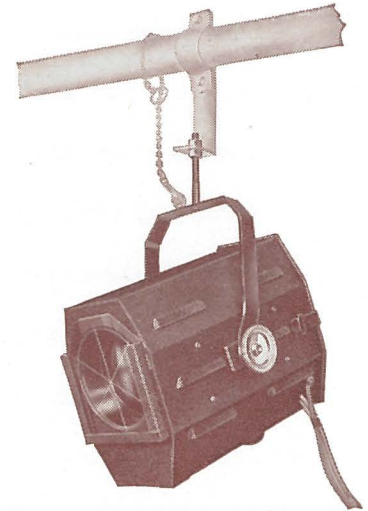
STRAND SPOTLIGHTS

PATTERN 45 MINIATURE SPOTLIGHT 250 WATT

This is a small spotlight which, being larger than the Pattern 27, gives a more efficient light, and greater range of focussing. Suitable for small stages, exhibitions and shop windows.

SPECIFICATION

The housing is constructed in sheet steel, efficiently ventilated. Access to lamp by hinged door at rear. 4½-inch diameter 6½-inch focus plano-convex lens. Type 45 tray, giving axial adjustment for lamp, complete with chromium plated reflector. Focussing by knob under lantern. Fitted with runner to take millboard colour frame on front. The Tilting Fork has a ⅜-inch Whitworth stem (for suspension or insertion in stand) and eyelet for safety chain (not included). The lantern is locked in position by two hand wheels. Wired with 3-foot heat-resisting tails without plugs. Finish: black crystalline enamel outside, matt black inside.



DIMENSIONS

| | Ft. | In. | Ft. | In. |
|-------|-----|-----|-------|-----|
| A ... | 8 | ½ | F ... | 4 |
| B ... | 0 | | G ... | 4 |
| C ... | 11 | ¾ | H ... | 5 |
| D ... | 6 | | J ... | 6 |
| E ... | 3 | ½ | | |

Weight.

Nett weight 9½ lbs.

Lamps.

250-watt Class B.1 Round Bulb Projector with E.S. Cap.

Beam Angles.

Maximum 39°, minimum 11°.

Maximum Throw.

Normally used up to 25 feet.

| PRICE (exclusive of lamp) | .. | .. | .. | .. | .. | .. | .. | .. | .. | .. |
|--|----|----|----|----|----|----|----|----|----|----------|
| C. 76.—Linen-bound millboard colour frames (5⅝-inches × 5¼-inches) | .. | .. | .. | .. | .. | .. | .. | .. | .. | per doz. |
| C. 77.—Ditto, with gelatine colours | .. | .. | .. | .. | .. | .. | .. | .. | .. | " |
| C. 78.—Ditto, with "Cinemoid" colours | .. | .. | .. | .. | .. | .. | .. | .. | .. | " |
| C.301.—Extra 4½-inch diam. 6½-inch focus plano-convex lenses | .. | .. | .. | .. | .. | .. | .. | .. | .. | each |
| C.233.—Extra chromium plated reflectors | .. | .. | .. | .. | .. | .. | .. | .. | .. | " |
| C.185.—15-amp. 3-pin moulded connectors | .. | .. | .. | .. | .. | .. | .. | .. | .. | per pair |

(continued overleaf)

HEAD OFFICE AND SHOWROOMS
29, KING STREET, LONDON, W.C.2
 SALES AND GOODS - **24, FLORAL ST., W.C.2**
 TEMPLE BAR 4444 GRAMS: SPOTLITE RAND LONDON

BRANCHES
313, OLDHAM ROAD, MANCHESTER 10
 COLLYHURST 2736
62, DAWSON ST., DUBLIN - DUB 74030