

# STRAND COLOUR MEDIUMS

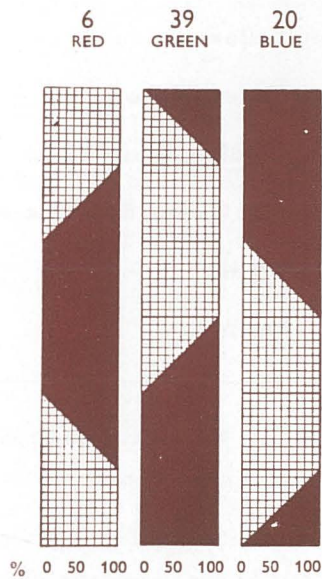
The percentage figures on the charts are approximate guides only since the characteristics of dimmers and circuits vary; slight movement of the dimmer handles either side of the positions given will bring in the required colour. If double wattage is not available for the blue, then No. 19 may be substituted for No. 20. The schedules show diagrammatically the positions in which to place the dimmer handles to obtain the colours in the first column. The percentages are of handle travel, 0 per cent. being the "off" position, 100 per cent. the "full on." For the tints no dimmer is taken below 50 per cent.

## PRIMARY COLOUR MIXING

From which the largest selection of colours may be derived

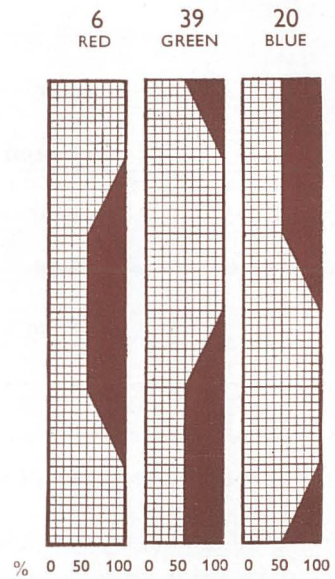
### HUES

- RED
- Orange
- Amber
- Yellow
- Pea Green
- Light Green
- GREEN**
- Deep Green
- Peacock Green
- Blue-Green
- Light Blue
- Medium Blue
- DEEP BLUE**
- Violet
- Mauve
- Magenta
- Claret
- Scarlet
- RED**



### TINTS

- Deep Salmon
- Light Salmon
- Warm Grey
- Green Tint
- Pale Green
- Steel Grey
- Steel Blue
- Cold White
- Lavender
- Pale Rose
- Deep Rose
- Pink (Deep)
- Deep Salmon

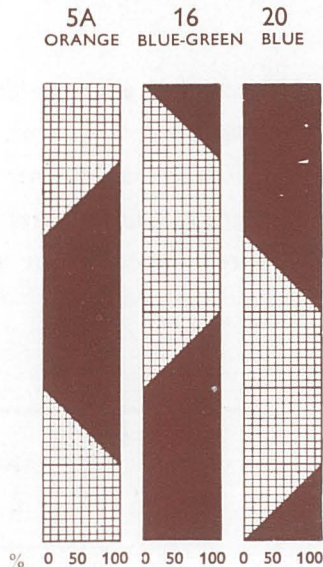


## ALTERNATIVE THREE-COLOUR MIXING

For realistic colours at maximum intensity

### HUES

- ORANGE**
- Amber
- Straw
- Warm White
- Grey
- Pale Green
- BLUE-GREEN**
- Peacock Green
- Peacock Blue
- Light Blue
- Medium Blue
- Dark Blue
- DEEP BLUE**
- Violet
- Mauve
- Rose
- Pink
- Salmon
- ORANGE**



### TINTS

- Deep Salmon
- Light Salmon
- Gold Tint
- Warm Grey
- Green-Grey
- Blue-Grey
- Steel Blue
- Lavender
- Rose Tint
- Pale Rose
- Pink
- Deep Pink
- Deep Salmon

