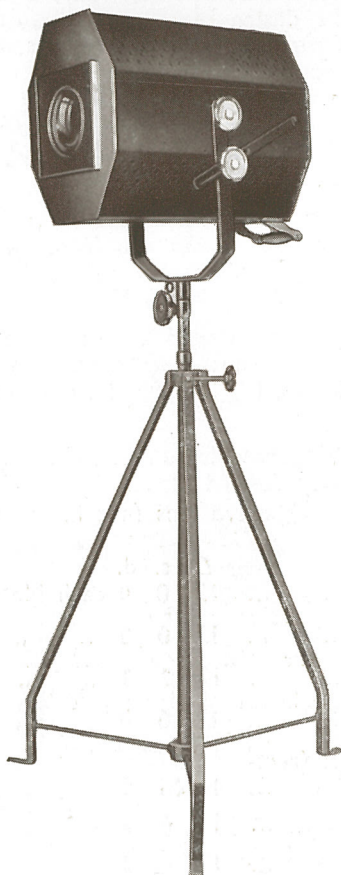


STRAND EFFECTS LIGHTING

PATTERN 61 OPTICAL EFFECTS PROJECTOR, 50 amp.

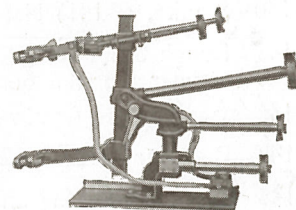


For the large stage, or where the general level of stage illumination is high, an arc lamp is essential, if satisfactory projection of optical effects is to be obtained. Although this lantern is primarily intended for use on the stage, it may be used with considerable success on front of house throws up to 100 ft., provided that provision is made for auxiliary support of the long lens tubes required. For throws over this, attention is drawn to the lanterns listed on pages 42 and 43.

SPECIFICATION

Lantern constructed with cast aluminium front and back, sheet steel sides. Double lined and louvre ventilation top and bottom, giving efficient ventilation. Heavy fork and quadrant with 3 in. diameter locking wheels. 5 in. diameter double plano-convex condenser. Front runners to take all standard optical effects attachments, space between runner and lantern for cooling blower, which should be used with stationary scene projection slides.

Six-movement hand-feed Arc Lamp, carrying up to 50 amperes. Lamp wired in rockbestos, terminating in a pair of heavy connection terminals. Access to lamp adjustments through door at rear of lantern. Extended feed knob projects through rear door. Duplex glazed spyholes each side. Rack and pinion focussing by external knob. Indicator scale showing position of arc lamp. Finish: black crystalline enamel outside, matt black inside, nickel-plated fittings.



PRICE (exclusive of Stand)... **£22 10 0**

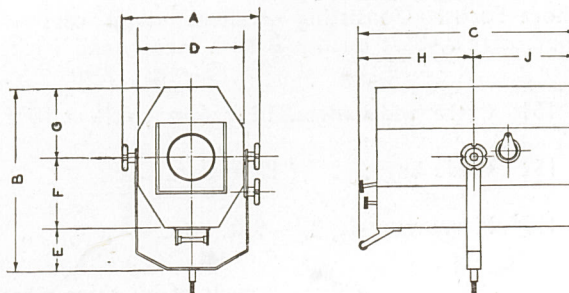
F 133 Special heavy pattern stand (maximum height 6 ft. 0 in., minimum 3 ft. 6 in.) **£3 0 0** each

D.C. CARBONS (prices see page 106).

20 m/m diameter Positive. 8 m/m diameter Negative (Cored and Copper-coated). Arc Volts 52.

PATTERN 61						
		Ft.	In.		Ft.	In.
A	3	F	...	8
B	8 $\frac{1}{2}$	G	...	8
C	10 $\frac{1}{2}$	H	...	0
D	11 $\frac{1}{2}$	J	...	10 $\frac{1}{2}$
E	4 $\frac{1}{2}$			

Nett weight: Lantern, 56 lbs. Stand, 17 lbs.



Telephone:
Temple Bar 7464 (6 lines).

STRAND ELECTRIC
AND ENGINEERING CO., LTD.
FLORAL STREET, COVENT GARDEN, W.C.2

Telegraphic Address:
Spotlite, Rand, London.