

STRAND CYCLORAMA LIGHTING

CIRCULAR CYCLORAMA FLOOD

PATTERN 55



500 Watt

This lantern, which is a shortened version of the Pattern 35 Arena, designed for horizontal use, has superseded the Pattern 34 Panorama Lantern. Owing to its more efficient light distribution it gives an intensity of light on the cyclorama with a 500 watt General Service Lamp that is actually greater than the old German type or panorama with a 1000 watt projector or special tubular lamp. Four such lanterns (one red, one green and two blue) would be eminently suitable for small school stages, etc. A much higher efficiency is shown when comparing the wattage used on this principle and that required when wide spread 150 watt battens are used for this purpose.

SPECIFICATION

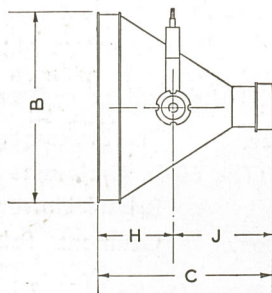
Lantern constructed in lead-coated steel, efficiently ventilated, fitted with circular hinged door carrying 16 in. diameter circular metal colour frame. One-piece Type 35 domed "SUNRAY" reflector. Tilting fork and 3 in. diameter locking wheels. Wired with 2 ft. rockbestos tails. Finish: black enamel outside white enamel inside.

PRICE (exclusive of Lamp) ... **£5 2 6**

						£	s.	d.
E 70	Extra 16 in. diameter metal colour frames	2	6	6 per doz.
E 71	Ditto, complete with assorted gelatines	2	19	6 "
E 72	Ditto, complete with assorted "Chromoid" colours	3	19	6 "
E 65	"L" clamp for 1½ in. barrel	0	2	9 each

Lamp: 500 watt Angle Burning General Service.

Beam Angle 105°.
Cut Off Angle 120°.



Minimum throw, 6 ft.

For Polar Curves see
Pattern 60, page 21.

PATTERN 55

	Ft.	In.		Ft.	In.
B ...	1	4½	H ...	6½	
C ...	1	3	J ...	8½	

Nett weight of Lantern, 18½ lbs.

Telephone:
Temple Bar 7464 (6 lines).

**STRAND ELECTRIC
AND ENGINEERING CO., LTD.**
FLORAL STREET, COVENT GARDEN, W.C.2

Telegraphic Address:
Spotlite, Rand, London.