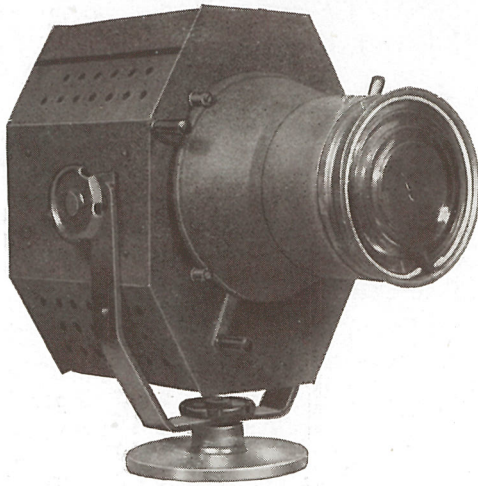


# STRAND SPOTLIGHTS

## PATTERN 73 MIRROR SPOTLIGHT, 1000 Watt



This lantern employs optical principles never before applied to stage spotlights. An 8 in. diameter silvered glass mirror projects an intense beam of light on a variable gate. This is focussed by a 6 in. diameter step lens. By this means rectangular spots of various sizes can be projected with an intensity of over double that obtained from a standard spotlight of the same size and wattage. Masking, to spot irregular objects on the stage hitherto impossible, can now be easily accomplished. This lantern is particularly suitable for circle front or batten spotting in the legitimate theatre.

### SPECIFICATION

Lantern constructed in sheet steel, efficiently ventilated, cast aluminium front and back. Type 43 tray, 8 in. diameter silvered glass reflector, 6 in. diameter, 9 in.

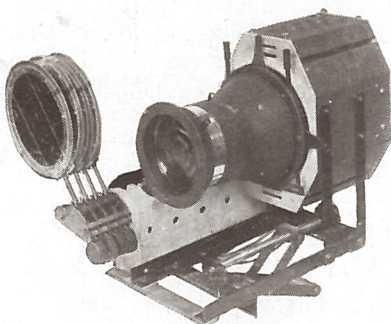
focus step heat-resisting lens. Independently operated horizontal and vertical barn door shutters with heat insulated operating handles, runner for additional internal mask if required. Front runner to take square millboard colour frame or circular metal frame. Rockbestos tails, tilting fork and quadrant with 3 in. diameter locking wheels. Finish, black crystalline enamel outside, matt black inside.

PRICE (exclusive of Lamp) ... **£16 5 0**

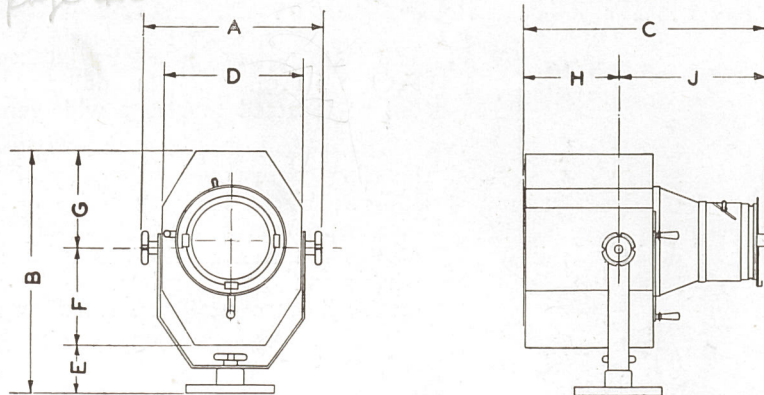
<i>C 85</i>	<del>C 240</del>	Circular metal colour frames (6 $\frac{3}{4}$ in. diameter) ... ..	£	s.	d.
<i>C 86</i>	<del>C 241</del>	Ditto, with assorted gelatines ... ..	1	0	0 per doz.
<i>C 87</i>	<del>C 242</del>	Ditto, with assorted "Chromoid" colours ... ..	1	3	0 "
			1	7	0 "

*Prices & details on file D85, 86, 87 page 40*

Beam Angles :  
Maximum 19° Minimum 3°  
Lamp : 1000 watt Class A1 Tubular  
or Class B1 Round Bulb Projector.



Patt. 73 with magnetic colour change as fitted in circle front at Odeon Alhambra, London, etc.



DIMENSIONS PATTERN 73

	Ft.	In.	Ft.	In.
A ... ..	1	1 $\frac{3}{4}$	E ... ..	5
B ... ..	1	6 $\frac{3}{4}$	F ... ..	6 $\frac{3}{4}$
C ... ..	1	7 $\frac{3}{4}$	G ... ..	6 $\frac{3}{4}$
D ... ..	1	10	H ... ..	6 $\frac{3}{4}$
J ... ..	1	0 $\frac{3}{4}$		

Nett weight 30 lbs.

**STRAND ELECTRIC AND ENGINEERING CO., LTD.**

**FLORAL STREET, COVENT GARDEN, W.C.2**

Telephone :  
Temple Bar 7464 (6 lines).

Telegraphic Address :  
Spotlite, Rand, London.

*Colour media as on pag 33 - C89 & C90  
to fit Pats. 73 & 83*