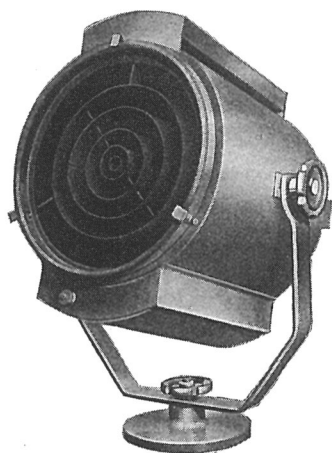


STRAND OUTDOOR FLOODS

PATTERN 50 B "OUTDOOR PAGEANT LANTERN," 1000 Watt



This lantern provides a very intense narrow angle soft edge beam of light, with slight variation in size of beam. Suitable for floodlighting church spires and objects from a distance. Particularly useful as spot-lights in pageants, as it enables high-lights to be put on groups of characters, thus giving a life to pageants hitherto only seen when search-lights have been available. The Tower Pageant and Tattoo was lit by sixty of these lanterns, on colour circuits, in conjunction with general illumination provided by the orthodox type of floodlight.

The highest spire in the country, that of Salisbury Cathedral (404 ft. to the cross) was lit by only four of these lanterns, with 1000 watt Class B Lamps, to each of the four sides, while the tower was illuminated by four Pattern 46 Lanterns to each side. The lanterns were mounted on the

roof, giving a maximum throw of 350 ft.

SPECIFICATION

Lantern constructed in lead-coated sheet steel efficiently ventilated. Spun copper door at rear carrying 10 in. diameter silvered glass parabolic reflector Type 50 tray, giving axial and vertical adjustment for lamp filament. Worm drive focussing. Front of lantern fitted with removable spill rings to cut off direct rays of light. Removable glass diffusing screen, and provision to take coloured glass strips. Weatherproof cable entry. Cradle with 3 in. diameter tilting wheels, heavy cast base. Finish: sprayed aluminium outside, matt black inside.

PRICE (exclusive of Lamp) ... £8 8 0

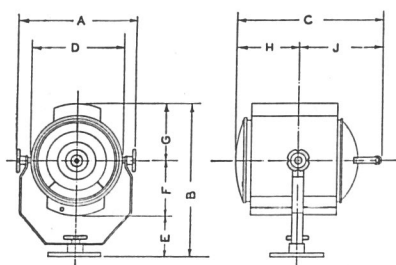
J219 Coloured Glass Diffusing Screens

(Red, Pink, Blue or Amber) ... 3s. 6d. each

Lamp: 1000 watt Class A.1 Tubular or Class B.1 Projector.

G.E.S. Cap. 1-10-0

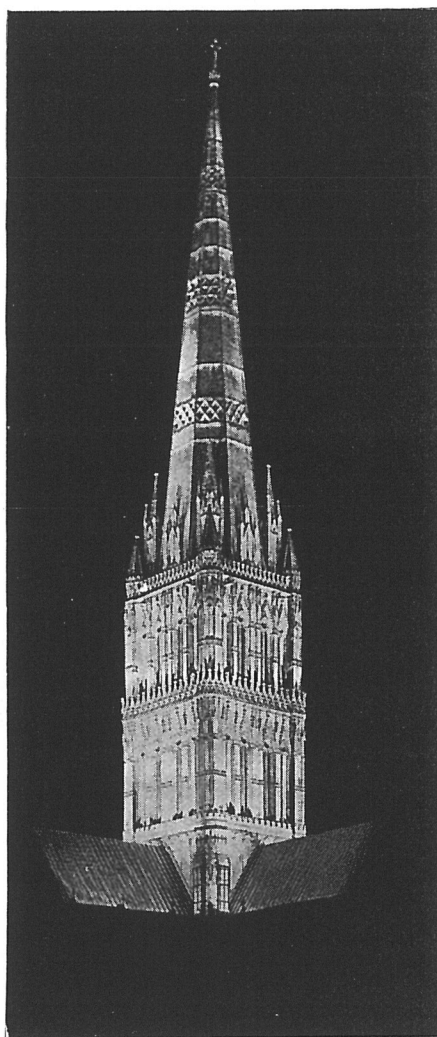
Beam Angle: Maximum 17°. Minimum 11°.



PATTERN 50B

	Ft.	In.
A ...	1	3½
B ...	1	8
C ...	1	6½
D ...	1	0
E ...	6	
F ...	6½	
G ...	7½	
H ...	8	
J ...	10½	

Nett weight of
Lantern, 25 lbs.



Salisbury Cathedral

Telephone:
Temple Bar 7464 (6 lines).

**STRAND ELECTRIC
AND ENGINEERING CO., LTD.**

FLORAL STREET, COVENT GARDEN, W.C.2

Telegraphic Address:
Spotlite, Rand, London.