

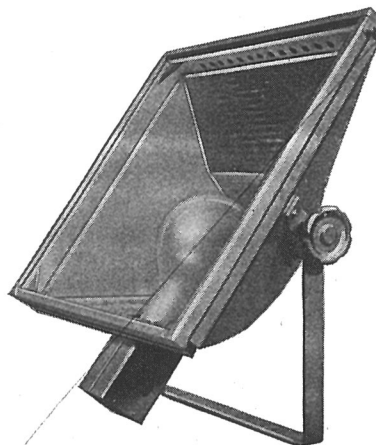
STRAND OUTDOOR FLOODS

PATTERN 47 500—1000 Watt SQUARE FLOOD

This lantern gives a wide angle horizontal beam, while the vertical distribution is so arranged that the maximum intensity is projected upwards. The lantern is therefore eminently suitable for even illumination of buildings at short range, and may be mounted either on brackets or on canopies, etc.

Lamp : 500 or 1000 watt Angle
Burning General Service.

Beam Angle { Vertical 99°.
Horizontal 103°.

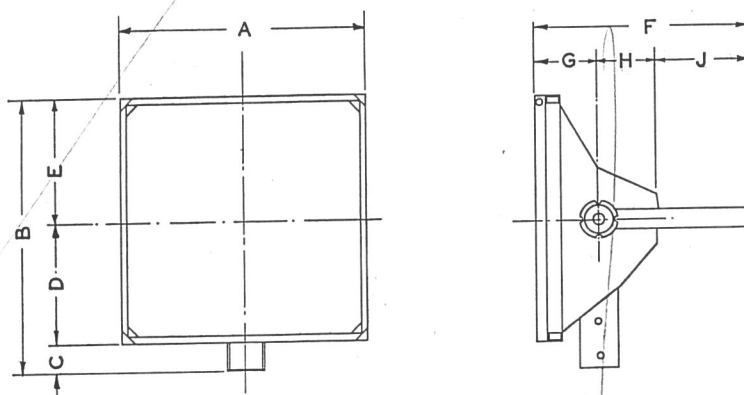


SPECIFICATION

Lantern constructed in lead-coated sheet steel, efficiently ventilated. Sectional silvered glass reflector. Heat resisting front glass. Frame for "Chromoid" colour medium. G.E.S. holder mounted on a special adjustable tray, giving correct filament position for 500 watt or 1000 watt lamp. Cradle with 3 in. locking wheels. Finish : sprayed aluminium inside and out.

PRICE (exclusive of Lamp) ... £4 10 0

J217 "Chromoid" colours (cut to size) 6s. 0d. each



PATTERN 47

	Ft.	In.	Ft.	In.	Ft.	In.
A ...	1	7½	D ...	9¾	G ...	5
B ...	1	10½	E ...	9¾	H ...	4½
C ...		3	F ...	1	J ...	7½

Nett weight of Lantern, 25 lbs.

Telephone :
Temple Bar 7464 (6 lines).

STRAND ELECTRIC
AND ENGINEERING CO., LTD.
FLORAL STREET, COVENT GARDEN, W.C.2

Telegraphic Address :
Spotlite, Rand, London.