

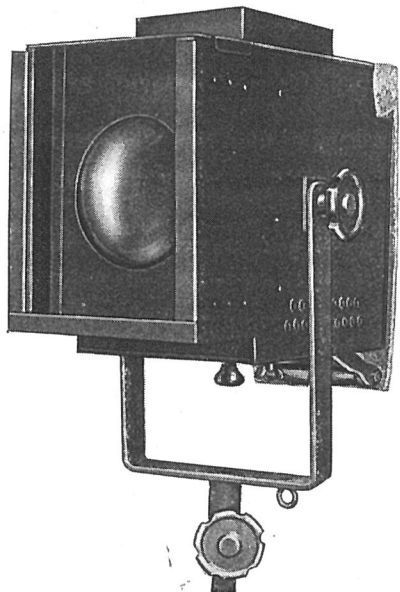
STRAND ARC SPOTLIGHTS

While the perfection of new types of concentrated filament gas-filled projector lamps has enabled the arc to be almost completely banished from the stage it still remains the best means of obtaining a bright source of light for spotlights, such as are used for following artists from the front of house.

On the following pages are listed a complete range of arc spotlights from the simple 15 ampere stage arc to the last word in front of house spotting—the Stelmar Arc.

It will be noticed that some of the smaller types may be used with white flame carbons on A.C. supply. This practice is not recommended owing to noise, and A.C. should only be used as a last resort

All STRAND arc spotlights are now fitted with heat-resisting lenses



PATTERN 23 A STAGE ARC SPOT 15-20 Amp.

This lantern is a general purpose spotlight for light duty on short throws not exceeding 50 ft.

SPECIFICATION

Double cased lantern, asbestos lined, constructed in heavy gauge planished steel, efficiently ventilated. Fitted with 6" diameter 9" focus *heat-resisting* lens. Tilting fork with 3" diameter locking wheels. Colour runners on the front to take three millboard colour frames. Asbestos curtain at rear.

ARC.—2-movement hand feed, carried on sliding tray, focussing by knob underneath. Rockbestos wiring to pair of connection terminals.

PRICE (complete with Arc Lamp) ... ~~£7-10-0~~ ¹¹⁻⁰⁻⁰

					£ s. d.
D 85	Linen-bound millboard colour frames (10 $\frac{3}{4}$ " x 7 $\frac{1}{2}$ ")	0-7-6 per doz. ⁸⁻³
D 86	Ditto, with assorted gelatines	0-10-0 " ¹¹⁻⁰
D 87	Ditto, with assorted "Chromoid" colours	1-2-6 " ¹⁻⁴⁻⁶
D 60	Light pattern telescopic stand (minimum height 4' 3", maximum 7' 0")	1-2-6 each ¹⁻⁸⁻⁰
D 113	Flange plate stand, 6" high	0-3-6 " ⁴⁻⁰
D 104	Iris diaphragm	2-12-0 " ³⁻²⁻⁶

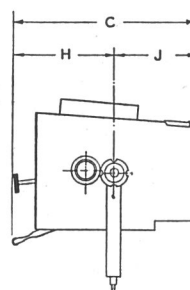
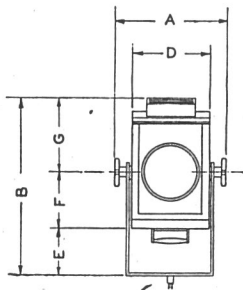
For suitable Resistances, see page 45

D.C. CARBONS. (Prices see page 106).

14 15 m/m diam. Positive (cored).

10 8 m/m diam. Negative (solid).

Arc Volts, ~~48~~ ⁵⁰



A.C. CARBONS. (Prices see page 106).

10 m/m diam. White Flame. Arc Volts, 25.

PATTERN 23A		PATTERN 23A		PATTERN 23A	
	Ft. Ins.		Ft. Ins.		Ft. Ins.
A	... 11 $\frac{1}{2}$	D	... 8 $\frac{1}{2}$	G	... 7 $\frac{1}{2}$
B	... 1 6 $\frac{1}{2}$	E	... 5	H	... 9 $\frac{1}{2}$
C	... 1 6 $\frac{1}{2}$	F	... 6	J	... 9

Nett weight of Lantern, 26 lbs.

Telephone : Temple Bar 7464 (6 lines). **STRAND ELECTRIC AND ENGINEERING CO., LTD.** Telegraphic Address : Spotlite, Rand, London.
FLORAL STREET, COVENT GARDEN, W.C.2