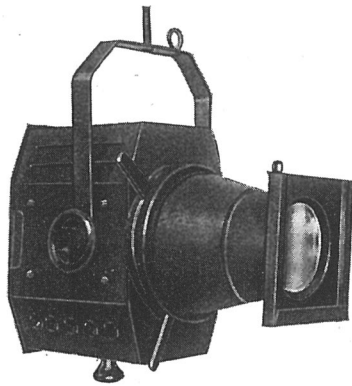


# STRAND SPOTLIGHTS

## PATTERN 74 BABY MIRROR SPOT 250 Watt



This is a small and compact lantern incorporating the same optical principles employed in the Pattern 73. The intensity and control of light given by this lantern renders it ideal for poster and display work.

### SPECIFICATION

Lantern constructed in sheet steel, efficiently ventilated. 4½ in. diameter silvered glass reflector, 3½ in. diameter Plano Convex Lens. Horizontal and vertical barn door shutters and runner to take internal mask if required. Front runner to take square millboard colour frame. Rockbestos tails, tilting fork with locking wheels. Finish, black crystalline enamel outside, matt black inside.

PRICE (exclusive of Lamp) ... £6 6 0

						s.	d.
C 76	Linen bound millboard colour frames (5⅝ in. x 5¼ in.)	...	...	...	...	5	0 per doz.
C 77	Ditto, complete with assorted gelatines	...	...	...	...	7	0 "
C 78	Ditto, complete with assorted "Chromoid" colours	...	...	...	...	10	0 "
C 64	Safety chain with snap hook	...	...	...	...	2	0 each.
C 79	Swivel arm bracket	...	...	...	...	7	6 "

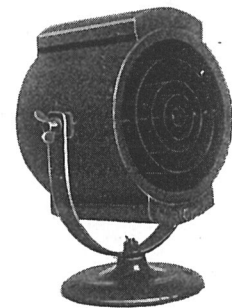
Lamp, 250-watt Class B I Round Bulb Projector E.S. Cap. 17/6.  
 Beam Angle, Maximum 19°, Minimum 0°.  
 Effective throw 35 ft.

## PATTERN 80 BABY PAGEANT LANTERN 12 Volt 100 Watt

This is a small lantern incorporating the optical principles of the Pattern 50 Pageant Lantern. The size has been reduced to an absolute minimum. The use of a low voltage lamp gives an intense beam of light for an extremely low current consumption.

### SPECIFICATION

Lantern constructed in sheet steel, efficiently ventilated. Door at rear carrying 4½ in. diameter silvered glass reflector. Worm drive focussing. Colour runners and glass diffusing screen. Rockbestos tails. Tilting fork with locking wheels and heavy base. Finish, black crystalline enamel outside, matt black inside.



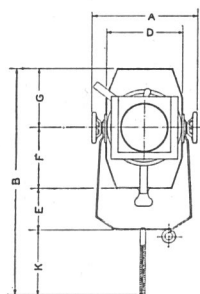
PRICE (exclusive of Lamp) ... £3 10 0

						s.	d.
C 243	Metal colour frames (5¼ in. x 5¼ in.)	...	...	...	...	18	6 per doz
C 244	Ditto, with assorted gelatine colours	...	...	...	...	1	0 6 "
C 245	Ditto, with assorted "Chromoid" colours	...	...	...	...	1	3 6 "
C 246	Suitable Transformer to reduce A.C. voltage	...	...	...	...	2	0 0 each

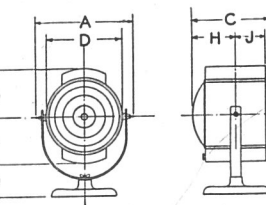
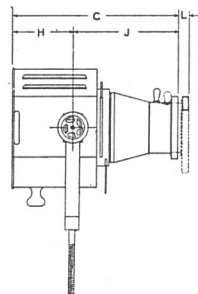
Lamp, 100-watt 12-volt Class F Projector, E.S. Cap.  
 Beam Angle, Maximum 17°, Minimum 10°.  
 Effective throw 150 ft.

### DIMENSIONS PATTERN 74

	Ft.	Ins.
A	...	8
B	...	4½
C	...	0
D	...	6
E	...	3
F	...	4½
G	...	4½
H	...	4½
J	...	7½
K	...	4½
L	...	1



Nett weight 11 lbs.



Nett weight 6½ lbs.

### DIMENSIONS PATTERN 80

	Ft.	Ins.
A	...	7½
B	...	8
C	...	6½
D	...	5½
E	...	2
F	...	3
G	...	3
H	...	3½
J	...	2½

Telephone :  
 Temple Bar 7464 (6 lines).

**STRAND ELECTRIC**  
**AND ENGINEERING CO., LTD.**  
**FLORAL STREET, COVENT GARDEN, W.C.2**

Telegraphic Address :  
 Spotlite, Rand, London.