

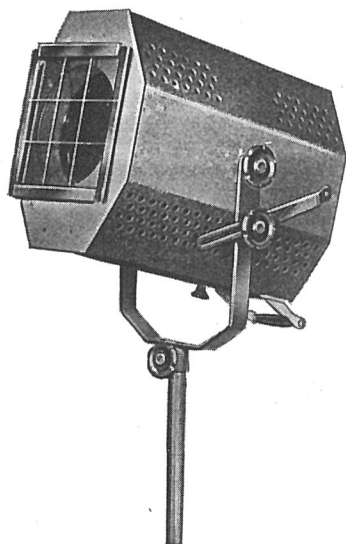
STRAND FOCUS LANTERNS

PATTERN 52 B 2000 Watt SPOTLIGHT

This lantern is similar to Pattern 52A, but the 4 in. increase in size gives wider focussing range, thus making it more suitable for general stage work.

SPECIFICATION

As set out for Pattern 52A, on page 34, fitted with removable "following" handle at rear.



PRICE (exclusive of Lamp) ... ~~£10-10-0~~ ¹²⁻¹⁵⁻⁰

C 91	Metal colour frames (10 in. x 10 in.)	...	£	s.	d.	
C 92	Ditto, with assorted gelatines	...	0	9	0	per doz. 10-0
C 93	Ditto, with assorted "Chromoid" colours	...	0	15	0	" 16-6
C 66	Heavy pattern telescopic stand (min. height 4 ft. 3 in., max. 7 ft. 0 in.)	...	1	7	0	" 1-9-6
						1-7-6 each 1-10-6

Nett weight of Lantern, 46 lbs.

Lamp : 2000 watt Cinema Studio or 1500 watt Class A.I Tubular Projector. G.E.S. Cap. *46-8-4*

Beam Angle : Maximum 54°. Minimum 14°. Effective throw, 100 ft.

PATTERN 50 A PAGEANT LANTERN 1000 Watt

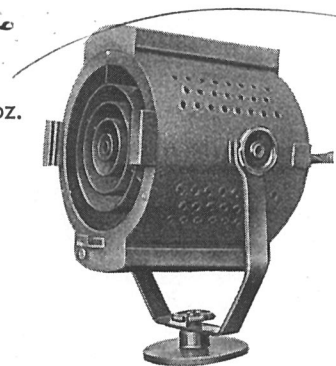
This lantern provides a very intense soft edge beam of light, the size of which can be varied slightly. Suitable for stage sunlight, photography, and other instances where a very intense beam is required.

SPECIFICATION

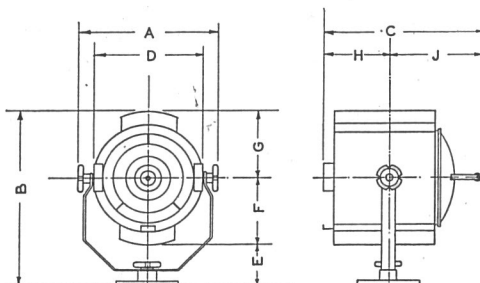
Sheet metal housing, efficiently ventilated. Door at rear carrying 10 in. diameter silvered glass parabolic reflector. Type 50 tray, giving axial and vertical adjustment for lamp filament. Worm drive focussing. Front of lantern fitted with spill rings to cut off direct rays of light. Colour runners and glass diffusing screen. Rockbestos tails. Tilting fork with 3 in. diameter locking wheels, mounted on heavy cast base. Removable handle at rear. Finish : black inside, black crystalline enamel outside.

PRICE (exclusive of Lamp) ... ~~£7-7-0~~ ⁸⁻²⁻⁶

C 61	Linen-bound millboard colour frames (11 3/4 in. x 11 3/4 in.)	...	£	s.	d.	
C 62	Ditto, with assorted gelatines	...	0	9	0	per doz.
C 63	Ditto, with assorted "Chromoid" colours	...	0	15	0	"
C 94	Coloured glass screens (Pink, Blue or Amber)	...	2	5	0	"
						0-2-6 each



10-0
16-6
1-14-0
2-9



DIMENSIONS. PATTERN 50A

A	Ft.	In.	D	Ft.	In.	G	Ft.	In.
B	1	3 1/2	E	1	0	H	7 1/2	
C	1	8	F	5		J	7	
	1	6		7 1/2			11	

Nett weight of Lantern, 26 lbs.

Lamp : 1000 watt Class A.I Tubular or Class B.I Projector G.E.S. Cap. *WUOZO*

Beam Angle : Maximum 17°. Minimum 11°.