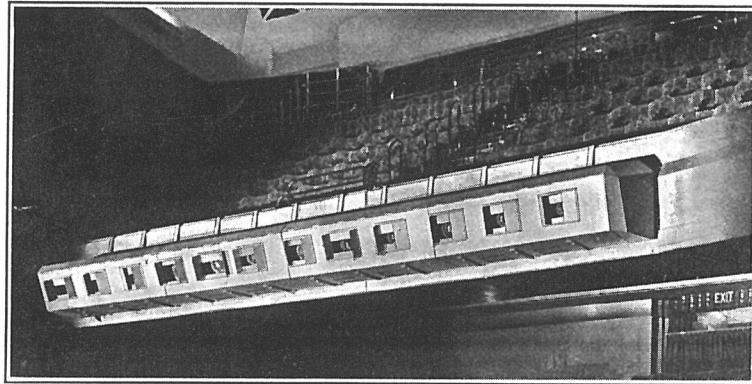
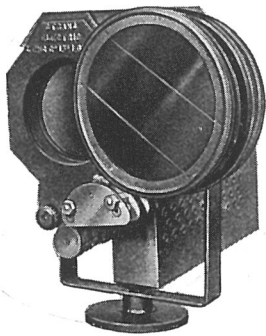


STRAND FOCUS LANTERNS

REMOTE COLOUR-CHANGE SPOT PATT 73



Circle Front Colour-change Spots at Adelphi Theatre, London

The increase in F.O.H. stage lighting from circle fronts, either as a substitute for or in addition to footlights, has rendered it desirable to have some means of changing the colours of the individual lanterns by remote control. For this purpose, the electric solenoid action here illustrated will be found silent, trouble-free, and easy to install.

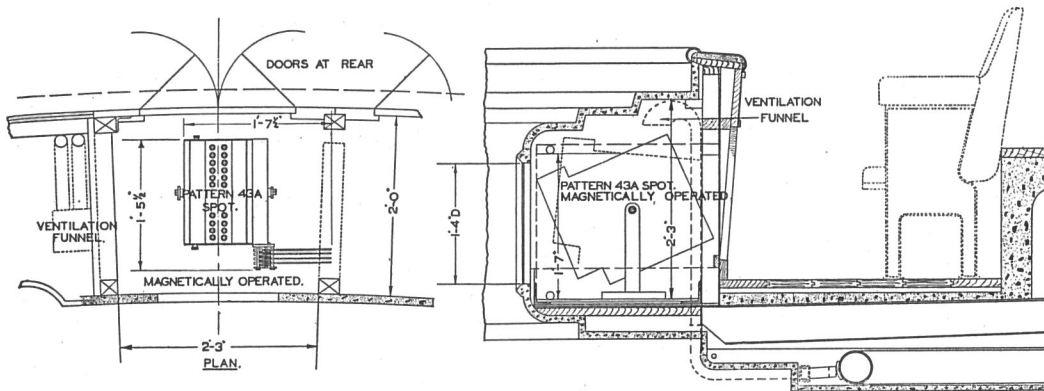
The system gives four colours and white; the action employs direct current solenoids to ensure silence. The coils can be wound to any voltage to suit whatever D.C. supply is available.

In practice, it is most convenient to feed the coils off the stage or projection room arc generator. However, a separate small rectifier can be supplied if preferred.

Control is by means of miniature switches mounted in colour rows with colour master switches. The mechanism can be fitted to Patterns 43A, 52A, 52B, 63 or 73. Their reliability and utility is proved by the fact that this remote colour control is fitted to banks of F.O.H. lanterns, situated in theatres whose names are household words throughout the English-speaking world:—

- | | | |
|------------------------|---------------------------|-------------------------------|
| Drury Lane Theatre | Covent Garden Opera House | Adelphi Theatre, London |
| Palace Theatre, London | London Palladium | Prince Edward Theatre, London |
| His Majesty's, London | Gaiety, London | LONDON CASINO |

And numerous theatres and cinemas in London and the provinces.



PRICE ... Pattern 43A Lantern, described on page 32, complete with remote colour change mechanism, colour frames and gelatines, but excluding lamp—

| | | |
|------------------------------------------------------------------|--------------|--------|
| (4 colours and white) | £27-0-0 | 31-10- |
| (3 colours and white) | £23-10-0 | 27-10- |
| C 89 Gelatine colours, cut to size (exclusive of frame) | s. d. | |
| C 90 "Chromoid" colours, cut to size (exclusive of frame) | 6 0 per doz. | |
| | 18-0 | 10-0 |

Telephone : Temple Bar 7464 (6 lines). **STRAND ELECTRIC AND ENGINEERING CO., LTD.** **FLORAL STREET, COVENT GARDEN, W.C.2** Telegraphic Address : Spotlite, Rand, London.