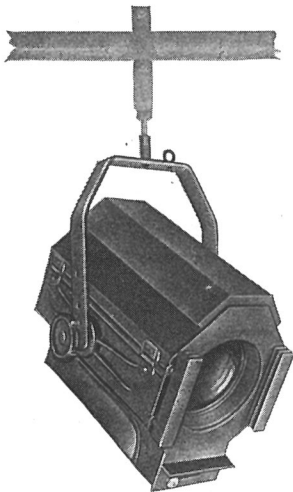


STRAND FOCUS LANTERNS

PATTERN 43 A BATTEN SPOT 1000 Watt



This compact lantern is primarily designed for use on a spot batten. Strength of construction, access to lamp, and special focussing have been arranged to this end. ~~If a pre-focus holder is fitted no lamp or reflector adjustment is necessary.~~ It may be used as a front of circle focus lantern if desired.

SPECIFICATION

Lantern constructed with aluminium front, back and sides. Sheet steel top and bottom. Access to lamp by hinged door at top. 6 in. diameter, 10 in. focus plano-convex lens. Type 43A tray, giving vertical and axial adjustment for lamp filament. Complete with spherical chromium-plated reflector. *Worm drive* focussing front and rear. Cast runners fitted with retaining springs to take two millboard colour frames. Rockbestos tails, tilting fork with 3 in. diameter locking wheels. Finish: black crystalline enamel outside, matt black inside.

PRICE (exclusive of Lamp) ... ~~£8-5-0~~ ¹⁰⁻¹⁰⁻⁰

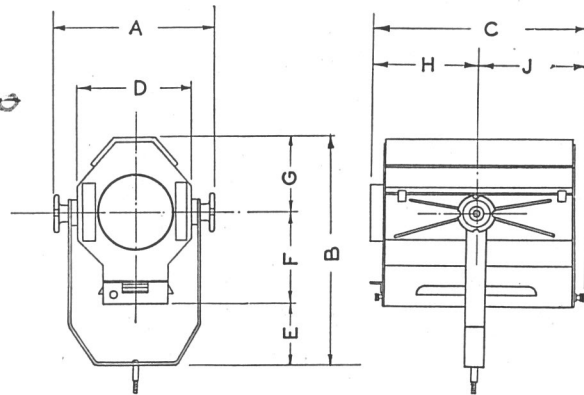
	£	s.	d.	
C 225 Linen-bound millboard colour frames (8 $\frac{3}{4}$ in. x 7 $\frac{1}{2}$ in.) ...	0	7	6	per doz. 8-3
C 226 Ditto, with assorted gelatines ...	0	10	0	" 11-0
C 227 Ditto, with assorted "Chromoid" colours (see page 98) ...	0	17	9	" 16-6
C 88 Spotting attachment with assorted masks, giving four sizes of spots (weight 5 $\frac{1}{2}$ lbs.) ...	2	0	0	each 3-0-0
C 64 Safety chain with snap hook ...	0	2	0	" 2-3
C 84 Adjustable barrel clamp ...	0	5	6	" 7-6
C 65 "L" clamp (as illustrated) ...	0	2	6	" 2-9

Lamp : 1000 watt Class A.1 Tubular or Class B.1 round bulb projector. G.E.S. Cap. *R1000*

Beam Angle : Maximum 54°. Minimum 18°.
Effective throw, 60 ft.

The lantern may, if desired, be supplied with a tray carrying a Mogul pre-focus holder for *10/- extra.*

Prices of complete Spot Battens to customer's specification on application.



DIMENSIONS. PATTERN 43A

	Ft.	In.		Ft.	In.		Ft.	In.
A	1	0 $\frac{1}{2}$	D	9		G	6 $\frac{1}{2}$	
B	1	5 $\frac{1}{2}$	E	4 $\frac{1}{2}$		H	8 $\frac{1}{2}$	
C	1	4 $\frac{1}{2}$	F	6 $\frac{1}{2}$		J	8 $\frac{1}{4}$	

Nett weight of Lantern, 30 lbs.

Telephone :
Temple Bar 7464 (6 lines).

STRAND ELECTRIC
AND ENGINEERING CO., LTD.
FLORAL STREET, COVENT GARDEN, W.C.2.

Telegraphic Address :
Spotlite, Rand, London.