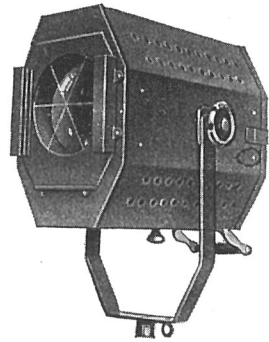


STRAND SPOTLIGHTS

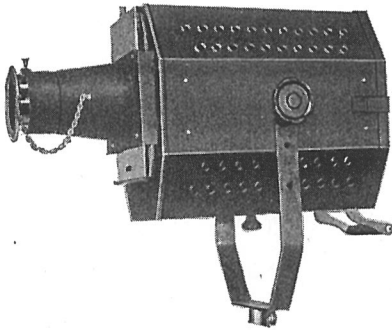
(GAS-FILLED LAMP TYPE)

There is no type of lantern that is put to such a variety of uses as the so-called "spotlight." Although generally referred to under this name, it is more correctly described as a focus lantern. This is used on battens, circle fronts, perches, etc., and can be focussed to give a medium angle flood, or to spot down to cover a chair or table. Its prime function is to create light and shade, and therefore life in the set on the stage. A wide range of these units is listed under the general heading of FOCUS LANTERNS.



Focus Lantern

All STRAND focus lanterns are supplied with spherical chromium-plated reflectors, of a diameter to match the lens concerned. These reflectors are durable and efficient. Once they are adjusted relative to lamp filament, so that the image thrown by the reflector and the image thrown by the lamp coincide, no further attention is necessary, whether the lamp is focussed for a large or small spot. A further refinement is obtained where the pre-focus holder is used. In this case the reflector and holder position is fixed at our works, and every lamp automatically registers correctly.



Focus Lantern and Spotting Attachment

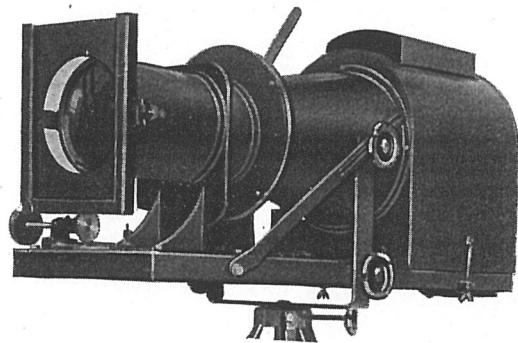
Where pin spotting is required, a supplementary lens can be fitted to the front runners, and gives a clear-cut circle of light of various diameters. The lens and the necessary diaphragms are made up in an auxiliary unit known as a SPOTTING ATTACHMENT. These are fitted with brass focussing lens tubes, safety chains, and with colour runners, to prevent deterioration of colour mediums through heat.

Strand Electric engineers, recognising that the decrease of light resulting from the use of spotting attachments left much to be desired, have designed two types of lanterns which can truly be described as perfect SPOTLIGHTS.

By means of special optical lens systems in the one case, and of reflectors in the other, the STRAND "Mirror Spotlight" and "STELMAR" have been designed to fulfil this requirement. Either of these, fitted with a 1000 watt projector lamp, gives an intense beam of light that can be controlled by diaphragms and masks to give any desired shape and size of spot. Furthermore, dimming may be effected from the stage board, in direct contrast to the cumbersome control of an arc spotlight.

To sum up, on the following pages can be found spotlights for every type of job, and in cases of doubt the considered opinion of our Research Department is at the customer's disposal.

STRAND focus lanterns and spotlights, with two exceptions, namely, Patterns 52A and 63, may be used either with a telescopic stand or suspended. The forks are fitted with $4\frac{1}{2}$ in. x $\frac{1}{2}$ in. threaded stem, and two hexagonal nuts and split pin.



"Stelmar" Spotlight

Telephone :
Temple Bar 7464 (6 lines).

STRAND ELECTRIC
AND ENGINEERING CO., LTD.
FLORAL STREET, COVENT GARDEN, W.C.2

Telegraphic Address :
Spotlite, Rand, London.