

STRAND FOOTLIGHTS and BATTENS

"SUNRAY" MAGAZINE BATTEN C TYPE, 60, 100 or 150 Watt

As specification for B type, but compartments at 8 in. centres.

PRICE ON APPLICATION

A 21 Gelatine Colours, cut to size 2s. 6d. per doz. ^{3/3}

A 22 "Chromoid" Colours, cut to size (see page 98) 8s. 6d. " ^{6/3}

Lamps: 60, 100 or 150 watt Theatre Batten Gasfilled E.S. Caps (see page 105).
Nett weight per 6 ft. section, 60 lbs.

"SUNRAY" MAGAZINE BATTEN D TYPE, 200 Watt

As specification for B type, but compartments at 10½ in. centres, fitted with type D 200 Circular "SUNRAY" silvered glass reflector. As used at Gaumont Palace, Hammersmith, Lewisham, Wood Green, Chelsea, etc.

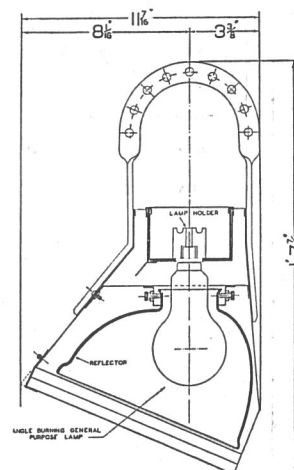
PRICE ON APPLICATION

A 23 Gelatine Colours, cut to size 4s. 3d. per doz. ^{7/0}

A 24 "Chromoid" Colours, cut to size (see page 98) 18s. 0d. ^{13/0}

Lamps: 200 watt General Service E.S. Caps (see page 105).

Nett weight per 6 ft. section, 110 lbs.



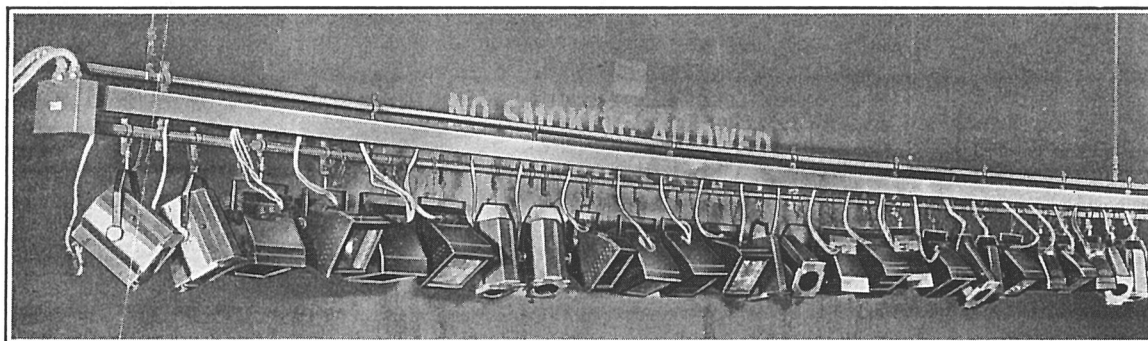
Type D Batten

"SUNRAY" GOLIATH MAGAZINE BATTEN E TYPE, 300 Watt

As specification for B type, but compartments at 10½ in. centres, fitted with type E 300 circular "SUNRAY" silvered glass reflector. As used at the Metropole Cinema, Victoria, etc.

Lamps: 300 watt General Service G.E.S. Caps.

PRICE ON APPLICATION



No. 1 Batten—Covent Garden Opera House

STRAND SPOT AND FLOOD BATTENS

The Spot Batten is very much in favour at the moment, and on most modern stages at least No. 1 Batten takes this form. Some idea of the utility of these battens is given by the fact that with the exception of one scene the whole of Mr. Clifford Whitley's "Stop Press" was lit by Mr. Hassard Short from Spot Battens.

The photograph above is of No. 1 Batten at the Covent Garden Opera House, of which the following is the specification:—
"No. 1 Batten consists of 48 ft. 1½ in. gas barrel, to which is fixed with 'L' clamps twelve Pattern 43A 1000 watt Batten Spot Lanterns (see page 32), and twenty-four Pattern 30 500 watt Flood Lanterns. Barrel complete with ten clamps to connect on to counterweight rods. On these clamps is fixed a sheet steel trough, carrying the Rockbestos wiring. The Pattern 30's are wired in pairs in the centre and four to each colour on the ends. The Spot Lanterns are wired with a separate circuit to each. The whole of the wiring terminates in a sheet steel twenty-way connector box at 'Actor's Left' end of batten. Box fitted with two cable grips for the asbestos covered multiple cables feeding batten."

Prices for Spot Battens will be forwarded on receipt of customers' requirements.

Telephone:
Temple Bar 7464 (6 lines).

STRAND ELECTRIC
AND ENGINEERING CO., LTD.

Telegraphic Address:
Spotlite, Rand, London.

FLORAL STREET, COVENT GARDEN, W.C.2