



Sintesi range

Professional lighting
equipment for theatres

General features

Sintesi range

The Sintesi name and range were created from the idea to bring together into one line of high level luminaires all the major technical features gathered from 30 years of experience in theatre lighting



Yoke mounted onto sliding rails for correct balancing... and positioning



Safety bond attachment



Automatic power cut out by bipolar microswitch on opening the lamp-tray

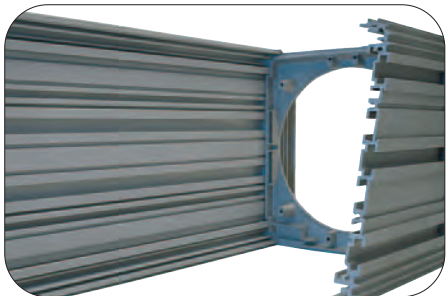


PCs, Fresnels and Profiles, all with lamp-tray hinged to the housing which can be completely removed for easy maintenance





Fast-locking levers exclusively designed for reduced obstruction or traditional screw-knobs (available on request)



Die-cast extruded aluminium housing for thermal dissipation at high temperature



Accessory top covered by lockable door operated by a safety-spring to avoid spill light with ventilation gaps on 1200/2500W models

Technical features

Products designed for professional use even under difficult conditions that guarantee:

Durability

Die-cast extruded aluminium housing, shockproof with anti-scratch paint

Long-Lasting Performance

Rustproof body, high capacity electrical components with high-temperature insulation and tempered glass lenses

Cooling

By dissipation through a finned extruded aluminium surface and by convection through various slots which on the back of the luminaire enhance ventilation when the unit is positioned at a steep angle

Safety

All luminaires are CE labelled in accordance with the EN 60598-2-17 standards for professional lighting fixtures for public venues and theatres

Profiles



Removable lantern and optics (Excluding FIGURA 05)



4 removable shaping shutters mounted between plates specially treated with an anti-abrasive surface and locked by long-extension springs to allow the shutters to be moved smoothly and precisely



Easy access for maintenance to the zoom lenses through two sliding doors



Fine adjustment for Peak/Even positioning

PC & Fresnel



Focus adjustment by an endless screw mechanism



Lens mounted onto extended holders to allow ventilation



Light centre length set for various lamps without the need for special tools

Zoom profile spots

1000/1200W Halogen

Mod. Figura 12 ZS - Figura 12 ZW



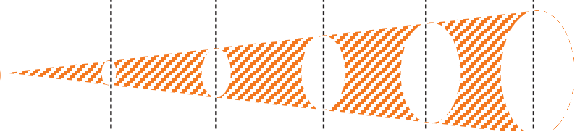
FIGURA 12 ZS

13° to 35° zoom variable profile spot with shaping shutters and slots for Iris/Gobo holder

Lux	12530	3133	1392	783	501
∅ (m)	0.91	1.82	2.73	3.65	4.56

NARROW BEAM

13°

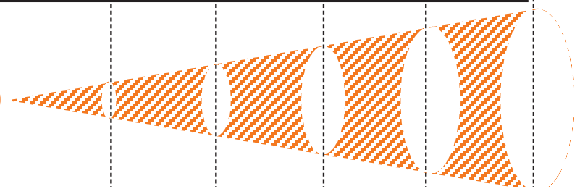


Dist. (m)	4	8	12	16	20
-----------	---	---	----	----	----

Lux	4496	1124	500	281	180
∅ (m)	2.52	5.04	7.57	10.09	12.61

WIDE BEAM

35°



Dist. (m)	4	8	12	16	20
-----------	---	---	----	----	----

TESTED WITH LAMP CP90 1200W 230V



FIGURA 12 ZW

24° to 50° zoom variable profile spot with shaping shutters and slots for Iris/Gobo holder

Lux	9233	2308	1026	577	369
∅ (m)	1.70	3.40	5.10	6.80	8.50

NARROW BEAM

24°

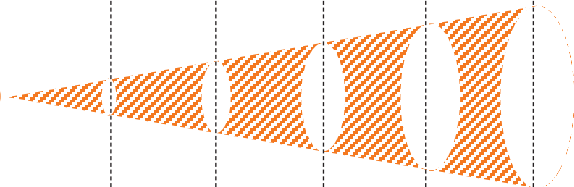


Dist. (m)	4	8	12	16	20
-----------	---	---	----	----	----

Lux	2835	709	315	177	113
∅ (m)	3.73	7.46	11.19	14.92	18.65

WIDE BEAM

50°



Dist. (m)	4	8	12	16	20
-----------	---	---	----	----	----

TESTED WITH LAMP CP90 1200W 230V

Technical features

Electrical

- Standard 230V, 50/60Hz power supply (others available on request)
- Lamp-holder type GX 9.5
- 2m power supply cable (plug available on request)
- Strain relief cable clamp entry into light housing

Safety

- Automatic power cut-out by bipolar microswitch on opening the lamp-tray
- Safety mesh (optional)
- Safety bond attachment
- Filter-frame locking system
- Compliance to CE EN 60598-2-17 standards

Optical

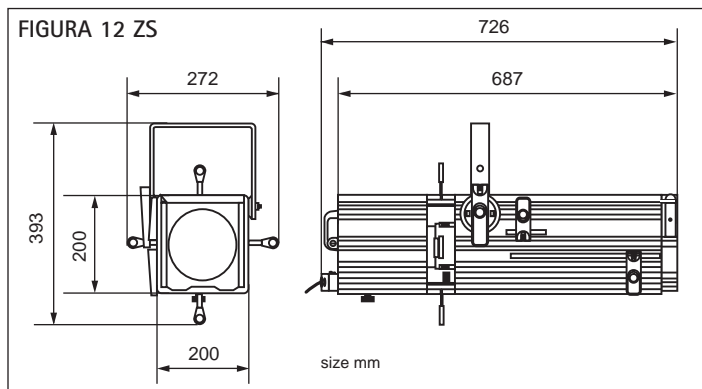
- Independent lens zoom system 13°-35° (ZS) and 24°-50° (ZW)
- Ellipsoidal reflector in 99.99% polished and treated aluminium: 150mm diameter
- 18-leaf iris diaphragm (optional)
- 4 removable shaping shutters mounted between plates specially treated with an anti-abrasive surface
- 110mm optical tempered glass internal lens
- 150mm optical glass internal lens

Mechanical

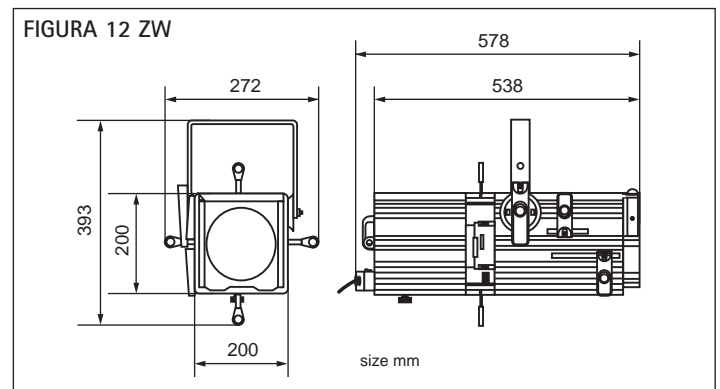
- Die-cast extruded aluminium housing
- External black anti-scratch Epoxy Resin paint
- Black optical internal paint to give no light reflection and high-temperature resistance
- Labyrinth ventilation to avoid light spillage

Operational

- B size gobo holder slots covered by a sliding door to prevent the accessories from falling out and to avoid spill light
- Exclusively designed zoom and focusing system with fast locking levers
- Double sliding door to access lenses for maintenance
- Lamp-tray hinged to the housing and completely removable for easy maintenance
- Yoke with 10mm diameter hole, adjustable height, reversible and sliding into extruded rails to balance accessories and for use in any position
- Accessory top covered by a door
- Heat insulated knobs and handles
- Quick tilt positioning with fast locking levers
- Peak/Even beam setting and fine adjustment of lamp-to-mirror position for 1000/1200W lamps
- Removable lantern and optics



Net weight Kg 9.8 – Gross weight Kg 11.5 – Box volume m³ 0.086



Net weight Kg 9.1 – Gross weight Kg 10.7 – Box volume m³ 0.070

Information for ordering accessories and different versions

Code

• Figura 12 ZS (13°-35°)	FI 12 ZS
• Figura 12 ZW (24°- 50°)	FI 12 ZW
Accessories	
• Colour filter frame	TC S12
• Safety mesh	R S12
• Safety bond	FUNE
• Gobo-holder for B size gobos	PGB 130
• Iris diaphragm	DIA 10
• Iris diaphragm with black-out	DIA 10 BO
• Theatre C-hook in black painted steel for 30 to 50mm diameter tubes	GAC
• TV C-hook in die-cast aluminium (PIVOT DIN adaptor required)	A8
• 29mm / M10 spigot adapter	PIVOT DIN
• Aluminium clamp for 50mm diameter tubes	HC / 500
• Superclamp	CLAMP
• Colour changing scroller, DMX 512 or 0/10V controlled	on request
Options	
• 100-120V lamp version	on request

Lamps

Theatre (3050 °K)

Film/TV (3200 °K)

Type / Order code	T21	T19	T29	CP 67	CP70	CP90	CP63
Power (W)	650	1000	1200	650	1000	1200	1000
Lampholder	GX9.5	GX9.5	GX9.5	GX9.5	GX9.5	GX9.5	GX9.5
Light-centre/base lamp distance (mm)	55	55	67	55	55	67	55
Luminous flux (Lumen)	13000	21500	27600	16500	25000	30000	Reflector
Life time (hours)	900	750	480	400	200	240	180
Colour temperature (°K)	3050	3050	3050	3200	3200	3200	3200
Supply voltage (V)	230	230	230	230	230	230	230
Nominal current (Amp.)	2.8	4.3	5.2	2.8	4.3	5.2	4.3



SPOTLIGHT SRL

VIA SARDEGNA, 3
20098 S. GIULIANO MILANESE - ITALY
PHONE +39.02.98.83.055
FAX +39.02.98.83.056
E-MAIL: SALES@SPOTLIGHT.IT
WEB: WWW.SPOTLIGHT.IT

Your Dealer



SPOTLIGHT esq  
professional lighting for the performing arts
certified quality management system ISO 9001:2008