

**1**

**Beam me up, Scotty**

The Masterlite Directional Beam System, manufactured by Rolight of Holland, is an attachment designed by PAR 64 stagelights, which adapts the light into a powerful, concentrated beam with rapid interchanging of 9 colours. The mirror lens allows the beam to be projected in all directions. The pan and tilt of the mirror are controlled via separate channels, as is the colour changer. Available through M & M LIGHTING, 87 Gloucester Ave., London, NW1 8LB, 1/722-4147.

**2**

**A pro cabinet**

The Cerwin CVX 253 loudspeaker is suitable for the large scale touring P.A. or for club use. Inbuilt crossovers are switchable for passive or active two or three-way operation. Bass is available from twin 15 inch coupled bass drivers. The 253 employs dual woofers for 6dB greater maximum acoustic output over the low frequency range. Available through AVITEC ELECTRONICS, 80/81 Walsworth Road, Hitchin, Herts, UK, SG4 9SX. 0462/58961.

**3**

**An IQ of 2000**

With the aid of the new Crown IQ System 2000, it's now possible to monitor and control up to 2,000 amplifiers, at the touch of a key. The IQ System 2000 can be run in conjunction with Crown Macro-Tech power amps and either a Mac or IBM computer. Heart of the system is Crown's IQ Interface which operates in tandem with one Crown IQ-P.I.P. card for every amp hooked up to the

system. SHUTTLESOUND, Unit 15, Osiers Estate, Osiers Rd., London SW181EJ. 1/871-0966. Fax: 1/870-9300.

**4**

**MEQ equalisers**

DigiTech has introduced three new programmable graphic equalizers all offering 99 memory locations, EQ curve comparison function, independent MIDI access to each channel, and plus or minus 12dB of cut and boost — the 28-band MEQ 28 mono (one-third octave graphic), the MEQ 14 stereo (two-thirds octave); and MEQ 7 four channel (1 1/3 octave graphic). Available through JOHN HORNBY SKEWES, Salem House, Garforth, Leeds, LS25 1PX, UK. 0532/865381.

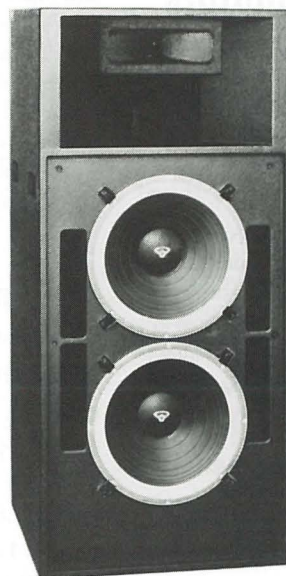
**5**

**Sky Art**

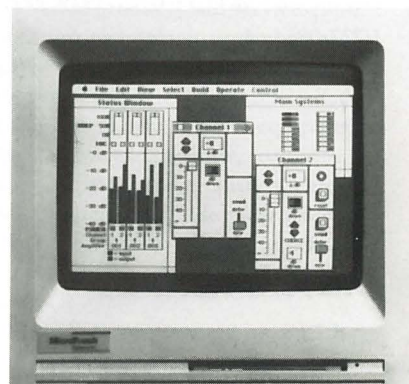
The STX 4,000w system is a 22" diameter, computer-controlled searchlight. Individual or multiple STX fixtures are attached to the computer via a single data wire. Custom software allows pre-programming, adjust and memorization for each STX in speed, tilt, focus, and shutter mode. Combinations of movements are possible to provide 360° in pan and 180° in tilt. Using a 4,000w xenon lamp, the STX system operates on 208 or 380 V.A.C., 3-phase power, with a single, multi-wire cable connecting head to power supply. EXTERIEUR NUIT, 48, rue Montmartre, 75002, Paris, France, 331.45.08.19.19. Fax: 331.40.26.42.52.



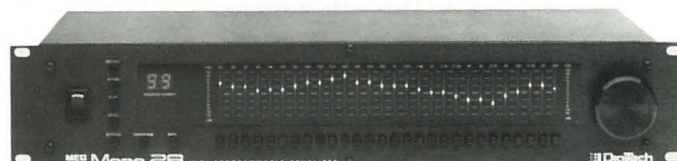
1



2



3



4