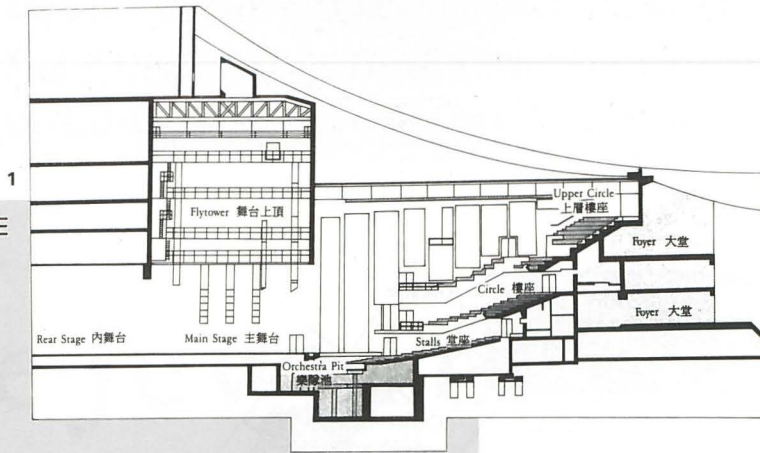


## GRAND THEATRE



### Stage

Proscenium — 15m (w) x 9m (h) x 19m (d); Stage lighting bridge and tower panels can adjust opening to a minimum of

10m (w) x 5.5m (h)

Stage width — Centreline to stage right counterweight frame - 12m;

Centreline to stage left shutter - 13m

Depth — Rear of proscenium to rear stage shutter - 18m; rear of proscenium to upstage limit of grid - 17m

Height — Clear under fly floors - 11m; clear under grid - 25m.

Rearstage wagon — 16m (w) x 12m (d); compensating elevators to sink wagon flush with surrounding stage areas, downstage, and rearstage.

Rearstage — Opening - 16m (w) x 9m (h); width - 18m; depth - 14m min.

Sidestage — Opening - 12m (w) x 9m (h); width - 21m max. to 16m min.; depth - 15m max. to 12m min.

Orchestra pit — small orchestra - 127 m<sup>2</sup> (gross); large orchestra - 165 m<sup>2</sup> (gross); depth — 455m maximum

Orchestra pit — small orchestra - 127 m<sup>2</sup> (gross); large orchestra - 165 m<sup>2</sup> (gross); depth — 455m maximum

Orchestra pit — small orchestra - 127 m<sup>2</sup> (gross); large orchestra - 165 m<sup>2</sup> (gross); depth — 455m maximum

Orchestra pit — small orchestra - 127 m<sup>2</sup> (gross); large orchestra - 165 m<sup>2</sup> (gross); depth — 455m maximum

Orchestra pit — small orchestra - 127 m<sup>2</sup> (gross); large orchestra - 165 m<sup>2</sup> (gross); depth — 455m maximum

Orchestra pit — small orchestra - 127 m<sup>2</sup> (gross); large orchestra - 165 m<sup>2</sup> (gross); depth — 455m maximum

Orchestra pit — small orchestra - 127 m<sup>2</sup> (gross); large orchestra - 165 m<sup>2</sup> (gross); depth — 455m maximum

Orchestra pit — small orchestra - 127 m<sup>2</sup> (gross); large orchestra - 165 m<sup>2</sup> (gross); depth — 455m maximum

Orchestra pit — small orchestra - 127 m<sup>2</sup> (gross); large orchestra - 165 m<sup>2</sup> (gross); depth — 455m maximum

Orchestra pit — small orchestra - 127 m<sup>2</sup> (gross); large orchestra - 165 m<sup>2</sup> (gross); depth — 455m maximum

Orchestra pit — small orchestra - 127 m<sup>2</sup> (gross); large orchestra - 165 m<sup>2</sup> (gross); depth — 455m maximum

Orchestra pit — small orchestra - 127 m<sup>2</sup> (gross); large orchestra - 165 m<sup>2</sup> (gross); depth — 455m maximum

Orchestra pit — small orchestra - 127 m<sup>2</sup> (gross); large orchestra - 165 m<sup>2</sup> (gross); depth — 455m maximum

Orchestra pit — small orchestra - 127 m<sup>2</sup> (gross); large orchestra - 165 m<sup>2</sup> (gross); depth — 455m maximum

Orchestra pit — small orchestra - 127 m<sup>2</sup> (gross); large orchestra - 165 m<sup>2</sup> (gross); depth — 455m maximum

Orchestra pit — small orchestra - 127 m<sup>2</sup> (gross); large orchestra - 165 m<sup>2</sup> (gross); depth — 455m maximum

Orchestra pit — small orchestra - 127 m<sup>2</sup> (gross); large orchestra - 165 m<sup>2</sup> (gross); depth — 455m maximum

Orchestra pit — small orchestra - 127 m<sup>2</sup> (gross); large orchestra - 165 m<sup>2</sup> (gross); depth — 455m maximum

Orchestra pit — small orchestra - 127 m<sup>2</sup> (gross); large orchestra - 165 m<sup>2</sup> (gross); depth — 455m maximum

Orchestra pit — small orchestra - 127 m<sup>2</sup> (gross); large orchestra - 165 m<sup>2</sup> (gross); depth — 455m maximum

Orchestra pit — small orchestra - 127 m<sup>2</sup> (gross); large orchestra - 165 m<sup>2</sup> (gross); depth — 455m maximum

Orchestra pit — small orchestra - 127 m<sup>2</sup> (gross); large orchestra - 165 m<sup>2</sup> (gross); depth — 455m maximum

Orchestra pit — small orchestra - 127 m<sup>2</sup> (gross); large orchestra - 165 m<sup>2</sup> (gross); depth — 455m maximum

Orchestra pit — small orchestra - 127 m<sup>2</sup> (gross); large orchestra - 165 m<sup>2</sup> (gross); depth — 455m maximum

Orchestra pit — small orchestra - 127 m<sup>2</sup> (gross); large orchestra - 165 m<sup>2</sup> (gross); depth — 455m maximum

Orchestra pit — small orchestra - 127 m<sup>2</sup> (gross); large orchestra - 165 m<sup>2</sup> (gross); depth — 455m maximum

Orchestra pit — small orchestra - 127 m<sup>2</sup> (gross); large orchestra - 165 m<sup>2</sup> (gross); depth — 455m maximum

Orchestra pit — small orchestra - 127 m<sup>2</sup> (gross); large orchestra - 165 m<sup>2</sup> (gross); depth — 455m maximum

Orchestra pit — small orchestra - 127 m<sup>2</sup> (gross); large orchestra - 165 m<sup>2</sup> (gross); depth — 455m maximum

Orchestra pit — small orchestra - 127 m<sup>2</sup> (gross); large orchestra - 165 m<sup>2</sup> (gross); depth — 455m maximum

Orchestra pit — small orchestra - 127 m<sup>2</sup> (gross); large orchestra - 165 m<sup>2</sup> (gross); depth — 455m maximum

Orchestra pit — small orchestra - 127 m<sup>2</sup> (gross); large orchestra - 165 m<sup>2</sup> (gross); depth — 455m maximum

Orchestra pit — small orchestra - 127 m<sup>2</sup> (gross); large orchestra - 165 m<sup>2</sup> (gross); depth — 455m maximum

Orchestra pit — small orchestra - 127 m<sup>2</sup> (gross); large orchestra - 165 m<sup>2</sup> (gross); depth — 455m maximum

Orchestra pit — small orchestra - 127 m<sup>2</sup> (gross); large orchestra - 165 m<sup>2</sup> (gross); depth — 455m maximum

Orchestra pit — small orchestra - 127 m<sup>2</sup> (gross); large orchestra - 165 m<sup>2</sup> (gross); depth — 455m maximum

Orchestra pit — small orchestra - 127 m<sup>2</sup> (gross); large orchestra - 165 m<sup>2</sup> (gross); depth — 455m maximum

Orchestra pit — small orchestra - 127 m<sup>2</sup> (gross); large orchestra - 165 m<sup>2</sup> (gross); depth — 455m maximum

Orchestra pit — small orchestra - 127 m<sup>2</sup> (gross); large orchestra - 165 m<sup>2</sup> (gross); depth — 455m maximum

Orchestra pit — small orchestra - 127 m<sup>2</sup> (gross); large orchestra - 165 m<sup>2</sup> (gross); depth — 455m maximum

Orchestra pit — small orchestra - 127 m<sup>2</sup> (gross); large orchestra - 165 m<sup>2</sup> (gross); depth — 455m maximum

Orchestra pit — small orchestra - 127 m<sup>2</sup> (gross); large orchestra - 165 m<sup>2</sup> (gross); depth — 455m maximum

Orchestra pit — small orchestra - 127 m<sup>2</sup> (gross); large orchestra - 165 m<sup>2</sup> (gross); depth — 455m maximum

Orchestra pit — small orchestra - 127 m<sup>2</sup> (gross); large orchestra - 165 m<sup>2</sup> (gross); depth — 455m maximum

Orchestra pit — small orchestra - 127 m<sup>2</sup> (gross); large orchestra - 165 m<sup>2</sup> (gross); depth — 455m maximum

Orchestra pit — small orchestra - 127 m<sup>2</sup> (gross); large orchestra - 165 m<sup>2</sup> (gross); depth — 455m maximum

Orchestra pit — small orchestra - 127 m<sup>2</sup> (gross); large orchestra - 165 m<sup>2</sup> (gross); depth — 455m maximum

Orchestra pit — small orchestra - 127 m<sup>2</sup> (gross); large orchestra - 165 m<sup>2</sup> (gross); depth — 455m maximum

Orchestra pit — small orchestra - 127 m<sup>2</sup> (gross); large orchestra - 165 m<sup>2</sup> (gross); depth — 455m maximum

Orchestra pit — small orchestra - 127 m<sup>2</sup> (gross); large orchestra - 165 m<sup>2</sup> (gross); depth — 455m maximum

Orchestra pit — small orchestra - 127 m<sup>2</sup> (gross); large orchestra - 165 m<sup>2</sup> (gross); depth — 455m maximum

Orchestra pit — small orchestra - 127 m<sup>2</sup> (gross); large orchestra - 165 m<sup>2</sup> (gross); depth — 455m maximum

Orchestra pit — small orchestra - 127 m<sup>2</sup> (gross); large orchestra - 165 m<sup>2</sup> (gross); depth — 455m maximum

Orchestra pit — small orchestra - 127 m<sup>2</sup> (gross); large orchestra - 165 m<sup>2</sup> (gross); depth — 455m maximum

Orchestra pit — small orchestra - 127 m<sup>2</sup> (gross); large orchestra - 165 m<sup>2</sup> (gross); depth — 455m maximum

Orchestra pit — small orchestra - 127 m<sup>2</sup> (gross); large orchestra - 165 m<sup>2</sup> (gross); depth — 455m maximum

Orchestra pit — small orchestra - 127 m<sup>2</sup> (gross); large orchestra - 165 m<sup>2</sup> (gross); depth — 455m maximum

Orchestra pit — small orchestra - 127 m<sup>2</sup> (gross); large orchestra - 165 m<sup>2</sup> (gross); depth — 455m maximum

Orchestra pit — small orchestra - 127 m<sup>2</sup> (gross); large orchestra - 165 m<sup>2</sup> (gross); depth — 455m maximum

1kw Harmony 15/28's; 10 650w Prelude 16/30's

Fresnel/Pebble Convex — 13 2kw Cadenza F's; 63 1kw Harmony F's; 10 650w Prelude PC's Beamlights — 10 1kw PAR 64 CP/61 Rank Parblazers  
Cyclorama top floodlights — 10 1250w 4-way Iris 4 units  
Cyclorama groundrow floodlights — 8 625w Pallas1 single units; 8 625w Pallas 4 four-way units  
Small floodlights and batter/groundrows — 10 200w Coda 500/1's; 11 200w Coda 500/4's; 25 500w Coda 500/4's; 10 500w Nocturne 500 'sun floods.'

Followspots — 4 2kw Xenon Supersol 2007SR's  
Colour changers — 8 2kw Ranks; 40 1kw Ranks; 15 CCT Demultiplexer units

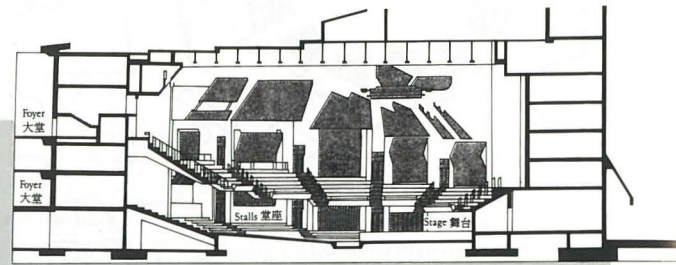
### Sound

Central loudspeaker system at proscenium; dual-channel roll-on loudspeaker stacks on stage  
Mainstage Control Console — Neve 5114 24/4/2/1 with 4-matrix outputs

### Lighting

Profiles — 4 2kw Cadenza 8's; 49 2kw Cadenza 12's; 14 2kw Cadenza 19/23's; 62 1kw Harmony 12's; 78

2



## CONCERT HALL

### Stage

20m (wide) x 12.6m (deep);  
Total usable area — 208 m<sup>2</sup>  
Height from auditorium floor — 95m; Orchestra risers — 20m, 40m, and 60m; 4-step choir risers for approx. 120 persons

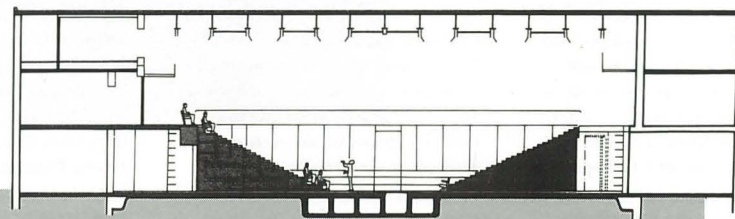
### Lighting

Overhead dedicated orchestra lighting from suspended acoustic canopy; Fixed simple rig to provide some presentation lighting for variety, jazz, and popular music events; 2 Zenon 2kw followspots

### Sound

Altec central loudspeaker system above front of platform; dual-channel roll-on loudspeaker stacks on platform; outlet for portable loudspeakers in platform, dual-channel feeds.  
Main Control Console — Neve 5114 24/4/2/1 with 4-matrix outputs for use at auxiliary control position in rear of stalls  
Stage Monitoring System — Yamaha MC 1608 monitoring console, 16 inputs, 8 outputs; 1/3 octave band graphic equalizer; 8-power amplification channels; 8 EV/FM 1502 wedge monitors.

3



## STUDIO THEATRE

### Stage

End Stage — 18m (w) x 10m (d); seating approx. 294  
Thrust Stage — 18m (w) x 17m (d); 430m stage depth, 930m thrust depth; seating approx. 338

Centre Stage — 6m (w) x 5.5m (d); seating approx. 542

Transverse Stage — seating approx. 380

### Lighting

120 way Galaxy control; 84 profiles; 20 fresnel/pebble convex; 20 beamlights; 16 cyclorama units; 16 groundrow units; 4 flood units; 22 colour change units; 4 demultiplexer units; 2 HMI 1200w followspots.

### Sound

Distributed overhead loudspeakers; distributed wall-mounted loudspeakers for surround-sound; 16 outlets in floor and at galleries for portable loudspeakers for sound reinforcement  
Main Control Console — Neve 5455/16 with 4-matrix outputs