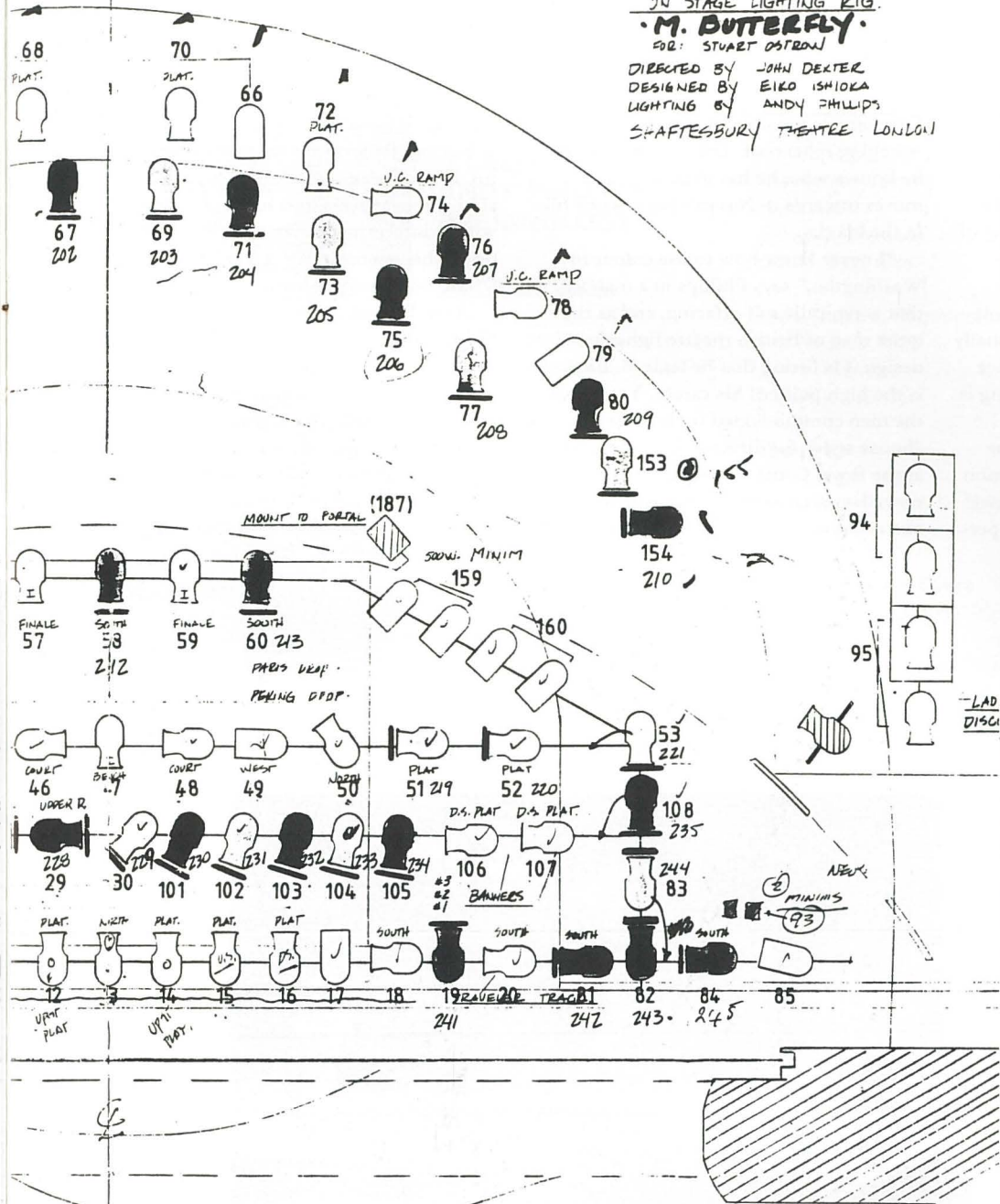


24 STAGE LIGHTING RIG.

M. BUTTERFLY.

WR: STUART OSTROM

DIRECTED BY JOHN DEXTER  
 DESIGNED BY EIKO ISHIOKA  
 LIGHTING BY ANDY PHILLIPS  
 SPAFFESBURY THEATRE LONDON



Phillips believes there is a cue every 20 seconds or so in *M. Butterfly* (plot 1, 2). Such a complex lighting technique necessitated a great deal of design discipline, which Phillips ascribes to his assistant in New York and London, Brian Nason.

Selon Phillips, dans *M. Butterfly*, l'éclairage change environ toutes les 20 secondes (Plans 1 et 2). Une technique d'éclairage aussi complexe nécessite une grande discipline de travail, que Phillips attribue à son assistant, Brian Nason, qui le seconde à New York et à Londres.

In *M. Butterfly* (1, 2) gibt es einen Lichtwechsel alle zwanzig Sekunden, glaubt Phillips. Eine solche komplizierte Aufgabe verlangt ein grosses Mass an Disziplin im Design. Phillips fand diese Disziplin in seinem Assistenten für New York und London, Brian Nason.

GROUPS:	
# 1 DIMMERS	500
# 1 COLORES	555
# 2 DIMMERS	558
# 2 COLORES	588
DIMMERS	900
COLORES	901
PLATFORM COLORES	
WHITE RAMP D.S.	500
WHITE RAMP D.S.	555
WHITE RAMP D.S.	558
WHITE RAMP D.S.	588
SOUTH WHITE COVER	909
	908
	907

Ramp Color	
600 Dimmers	
601 0 - N.C.	
602 10% R11 Yellow	
603 20% R32 Salmon	
604 30% L11 Pink	
605 40% R57 Lav	
606 50% R58 Purple	
07 60% L132 Blue Green	
18 70% L115 Aqua	
80% R19 Aqua	
90% L106 Red	

SUBMASTERS	
Sub 1 = 0	
Sub 2 = 600	Lamp WHITE
Sub 3 = 700	
Sub 4 = 800	
Sub 5 = 900	
Sub 6 = 901	
Sub 7 = N	
Sub 8 = 1	
Sub 9 = ADY	
Sub 10 = AD	
Sub 11 =	

SPECIALS	
PAES	999
SEK BOOTH	97
MUSICIANS	182
JAIL	181
DOORWAY	100
DOORWAY #2	96
1E1S BECH	181
1E1S BECH	88
1E1S BECH	162
1E1S BECH	179
1E1S BECH	178
1E1S BECH	57
1E1S BECH	59
1E1S BECH	47
1E1S BECH	86
1E1S BECH	91