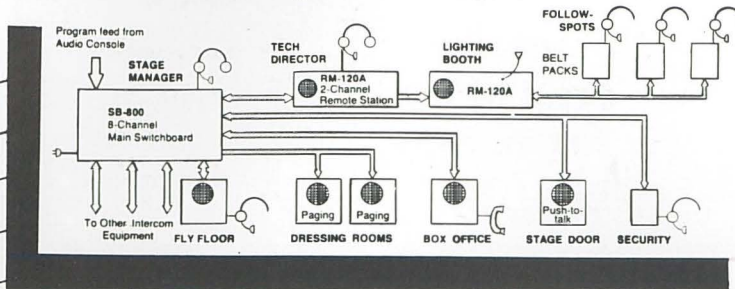


The Intercom System That Grows As You Do



CS-210 2 Channel Main Station



Interface with Other Systems

A complete series of devices link Clear-Com with virtually any communications system. Interfaces include: **AC-10H** (telephone/two-wire interface); **IF4-4** (for three-, four-wire interface); **WRS-3** (for duplex wireless systems).

The Original Theatre Intercom

For 15 years Clear-Com has been the U.S.A. leader in behind-the-scenes communications for lighting and stage crews. Famous world-wide for reliable performance, ruggedness, and excellent speech intelligibility, Clear-Com withstands the abuse and mileage undergone by "travelling" systems.

A Comprehensive and Integrated System

Clear-Com's single and multi-channel intercom systems are in a line with over 50 different components and accessories. This allows countless system configurations using one, two, four, and eight rings and production talk-back channels. All parts are compatible... start out with the basics, and add more as your requirements grow!

All The Functions You Need

Clear-Com does what you want it to do. Features include: up to 100 intercom stations on a mile of twin screen microphone cable; no-fail power supplies; remote paging (for dressing rooms); visual signalling; party-line and private-line intercom channels. Rack-mount, wall-mount, custom-mount, portable, and belt-pack styles.



In the UK call or write:

TBA TECHNOLOGY 31 Corsica Street / London N5 1JT
Telephone 01 359 3599
Telex: 25960 EUOTL G

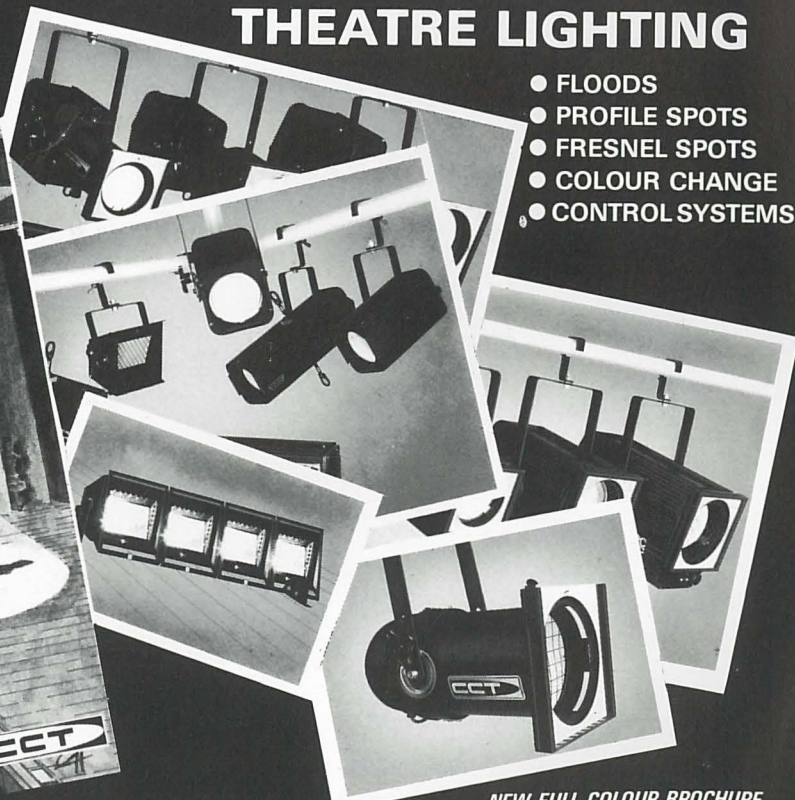
Elsewhere:

Clear-Com
EXP. DIV: Box 302
Walnut Creek, CA 94596 U.S.A.
415-932-8134
Telex: 176340 CLEAR-COM WNCK

HIGH PERFORMANCE THEATRE LIGHTING

APPEARING IN THE BEST POSSIBLE LIGHT

- FLOODS
- PROFILE SPOTS
- FRESNEL SPOTS
- COLOUR CHANGE
- CONTROL SYSTEMS



NEW

NEW FULL COLOUR BROCHURE

CCT theatre lighting limited

WINDSCR HOUSE 26 WILLOW LANE MITCHAM SURREY CR4 4NA Tel 01-640 3366 Telex 946648