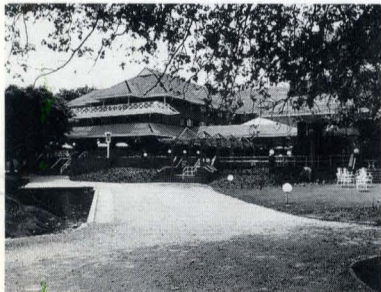


By David Brooks

Beside the banks of the River Thames at Caversham today stands a brand new hotel owned by Norfolk Capital Hotels. It was early 1987 when Ron Baumbach, UK Field Sales Manager for Commercial Lighting, was first called in by Keith Irving of Keith Miller and Associates, Carshalton, to discuss the project. At that stage, no lighting plans existed although the need for a controlled dimming system had been recognised. Hence the call to Ron. Ideas were exchanged so that by May, drawings were available and a dimming scheme proposed. Not surprisingly for a project of this type many changes were made to the original lighting plan throughout the development. Although intended for a Christmas Eve opening, it was early in 1988 when the Environ dimmers were taken from their winter quarters in a site Portacabin to be installed. They are used for controlling, predominantly, low voltage tungsten halogen lighting in the entrance foyer, lounge areas, cocktail bar, shop, restaurant, ballroom and function room and in various meeting rooms. Based on Strand Commercial Lighting's plug-in modular Environ 2, it is a distributed system with each area having its own switch room. Most dimmers are of the preset variety; a few smaller areas being equipped simply with linear fader outstations. The electrical installation was carried out by Herbert Lascelles of Maidenhead.



On a superb Thames side site – the brand new Caversham Hotel.

As our photographs illustrate, the Caversham Hotel which opened in June 1988, is an attractive building in a modern architectural style, well equipped with facilities for guests and, with the aid of Environ, creating an attractive interior environment for guests to enjoy.

Caversham Hotel



The Lobby – Environ controls the low voltage tungsten fittings. Environ dimmers are completely happy with low voltage – increasingly used these days but definitely needing properly designed dimming.



The Dining Room. Environ pre-sets give push button bright and cheerful breakfast times, relaxed lower lighting levels at dinner plus 'Clean Up' for full white while the hoovers are plied.



(Left to right: Peter Burrows, David Brooks, Kathy Vertannes, Ron Baumbach, Kevin White, Ed Pagett).

Strand Commercial Lighting Team

Seen here on a rare occasion with all the team gathered at Isleworth are the UK group responsible for promoting and selling dimming and lighting control products to the commercial lighting market. As described left, hotel projects provide one category of building where

Strand's expertise can be applied, but the variety of applications range from dimming for retail stores to offices, conference facilities, finance houses and corporate buildings, which are just a few of the recent projects.

One To Be Proud Of!

On Bastille day next year – 14th July 1989 – Europe's latest and most prestigious Opera House will open in Paris.

The Opera Bastille opening will mark the end of four years work on site and the expenditure of over two billion francs.

There are three auditoria. The main house seating 2,700 with two balconies and the amphitheatre, which will seat 500, and the studio which will accommodate 280.

I am delighted and proud to announce that the whole lighting and control installation will be by Britain's leading theatre lighting company. Can you guess.....?

Here are a couple of clues – 'Galaxy' & 'Cantata'.

We will be featuring the whole magnificent project and its lighting



installation in a future issue. In the meantime, the heartiest congratulations to Bernard Bouchet and his colleagues in Strand Lighting, France.

Quartzcolor Luminaires

Our product has been used for lighting the following box office bonanzas released during the last 12 months:

'Who Framed Roger Rabbit'
'Full Metal Jacket'
'Good Morning Vietnam'

as well as Academy Award Nominee: 'Hope and Glory'.

Currently shooting with our luminaires, at Elstree Studios, England is 'Indiana Jones III'.

Recently completed in England, for American syndication as a play for television is a new production of 'A Man For All Seasons' starring Charlton Heston.

For the record 'Full Metal Jacket', a Vietnam war drama was shot in a disused industrial zone in London. So much for movie make-believe.

Quartzcolor also featured in the lighting for the Academy Awards, the Emmy Awards, and the People's Choice Awards. Our equipment will also be in South Korea during August for the Summer Olympics.

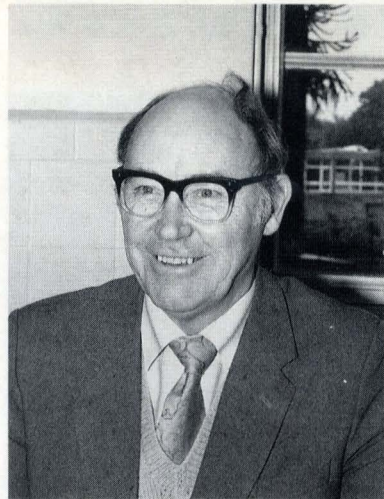
Percy Corry



We are sorry to announce the recent death of Percy Corry, for many years the Managing Director of Watts & Corry, who represented Strand in Manchester.

Percy Corry's interest in theatre was far wider than its application to business. He was a keen amateur actor, and a great supporter of all that was theatrical in the North West. He had achieved the grand age of 94.

Service Comes With Strand



Fred Brown – the member of the Isleworth Service Team who is responsible for all Service Agent Training.

We believe that one of the factors which continues to keep us at the top in entertainment lighting is that with every product comes true service back-up. The more complex and sophisticated the equipment the more vital we believe the service support in the field to be.

A few issues back I wrote about our own service department, but now Russell Dunsire, our Sales and Marketing Director, has suggested I tell readers something about our network of service agents. To discuss a network as such would mean generalities, which are always tedious, so I have visited one service agent who is a good example of the twenty five in the U.K. and the many overseas. Although Luff Light and Sound, the agents concerned, are probably a larger company than some, being London based, their methods and skills can be taken as typical of a carefully chosen and continuously trained group.

Luffs are our South London distributors, selling not a few of our products, but my visit was to look into Luffs Engineering Service, who do regular servicing and emergency call-outs in the West End and Home Counties.

The service team is headed by Ken Priddy, the Engineering Manager, who came into the theatre technical world by an interesting route. He had been an R.A.F.



Ship shape indeed. Luffs service workshop.



Plenty of Strand Packaged Spares back up Luff service – as they do every authorised Strand Service operation. In fact the very largest spares stock I have ever seen was that of our Norwegian agent. A large basement full of parts, including lantern bodies through the ground floor storage area of the Larsens Oslo offices.

apprentice and had progressed to dealing with radar, special signals and such, finally being stationed at Woolwich Arsenal. Some twelve years ago, the R.A.F. behind him, Ken was considering his future role in life. What better spot for philosophic introspection than his local, the Golden



Ken Priddy, who manages Luff Light & Sound Engineering, the section of Luffs responsible for their authorised Strand Service Agency, as well as supervising their sound operation and the Luff Special Projects Department. Were you impressed as the Phantom of the Opera's flickering candles rose through the mist? Ken's department designed and built the interface between the Galaxy and the two D.C. lamps in each candle, including the provision of a variable D.C. supply to allow dimming.

reflectors grow less reflective and cables chafe.

Luffs like most of our service agents, offer a lantern re-build service. This can be a simple mechanical and electrical overhaul, replacing cables, sleeves etc. as necessary, or a complete rebuild and re-enamel to bring a lantern as near to new again as spares availability allows.

Our Agents also normally offer contract maintenance service including an annual main service on controls and dimmers and emergency call-outs for contract customers without extra charge.

And, of course, for all Strand Official Service Agents the full resources of Strand's own service department are available as back-up.