



Premiere Instruction

Table of Contents

Introduction and Assistance	1
Manual Organization	1
Conventions	2
Glossary of Terms	2
Technical Assistance	6
Problems	6
Technical Questions	6
Parts Purchases	6
Comments and Suggestions	6
Addresses	6
Navigating in Windows	7
General Terminology	7
Parts of a Window	9
Dialog Boxes	12
Using a Scroll Bar	13
Scrolling with the Keyboard	14
Using Lists	15
Select a list item	15
Select multiple items	15
Text Editing	16
Edit Using a Mouse	16
Replace an Entire Entry Using the Keyboard	16
Replace Part of an Entry Using the Keyboard	16
Installation	17
The Distributed Premiere System	17
Selecting the Data Protocol	18
RS232 Connections	19
RS485 Connections	20
What You Need to Run the Software	21
Installing the Software Key	22
Installing the Software	22
Getting Started	23

Tutorial	25
Files	25
Premiere Network Manager Files	25
Premiere Configuration Files	25
Premiere Disk Files	26
Automatic File Open	26
File Errors	26
Startup	27
Starting Premiere Network Manager	27
Starting a New File	28
Saving the File	30
Configuring the System	31
Setting Communications Parameters	31
Setting the Astronomical Time Clock	32
Setting the PC Clock	33
Synchronizing Time	33
Loading Events	34
User Privileges	35
Creating New Users	35
Logging In	36
Logging Out	36
Status Groups	37
Organizing Status Groups	37
Creating Status Groups	39
Creating the Top Group	41
Changing Display Fonts	42
Accessing Groups and Rooms	43
Locking and Unlocking Stations	44
Link Groups	45
Organizing Link Groups	45
Creating Link Groups	45
Names	47
Channel Control	48
To change one slider	48
To select more than one slider	49
To change a multiple slider selection	49
To record your changes in a preset	50
Presets	51
Recording Presets	51
Previewing Presets	53
Selecting Presets	54

Events	55
For Preset Events:	57
For Lockout and Unlock Events:	57
For Macro Events:	57
Macros	58
Recording a Macro	58
Running a Macro	59
Room Links	60
The Toolbar	62
To hide or display the Toolbar	62
Toolbar buttons	62
Printing	63
Setting Up the Page Format	63
Previewing the Report	64
Printing the Report	65
Getting Help	66

Reference **67**

About Box	68
Add Config File Dialog Box	69
Assign Groups Dialog Box	69
Astronomical Parameters Dialog Box	71
Communications Parameters Dialog Box	72
Communications Statistics Window	72
Configuration File Selection Dialog Box	73
Date & Time Dialog Box	74
Display Options Dialog Box	75
Edit Channel Name Dialog Box	77
Edit Group Name Dialog Box	78
Edit Preset Name Dialog Box	78
Edit Room Name Dialog Box	79
Edit Station Name Dialog Box	80
Edit Menu Commands	81
Event Editor Window	82
Event Time Dialog Box	84
Event Type Dialog Box	86
File Menu Commands	88
File Open Dialog Box	89
File Save As Dialog Box	90

Files	91
Premiere Network Manager Files	91
Premiere Configuration Files	91
Premiere Disk Files	92
Automatic File Open	92
File Errors	92
Fonts Dialog Box	93
Group Attributes Dialog Box	94
Help Menu Commands	95
Link Rooms Dialog Box	96
Login Dialog Box	97
Login Menu Commands	98
Macro Description Dialog Box	99
Macro Editor Dialog Box	100
Manual Level Control Window	101
Menu Bar	102
Page Setup Dialog Box	102
Preset Copy Dialog Box	103
Preset Editor Window	104
Print Dialog Box	106
Print Setup Dialog Box	107
Run Macro Dialog Box	108
Select Presets Dialog Box (#1)	109
Select Presets Dialog Box (#2)	110
Status Bar	111
Status Window	112
Title Bar	114
Toolbar	115
Tools Menu Commands	116
User Privileges Dialog Box	116
View Menu Commands	118
Window Menu Commands	119

Index

121

Table of Figures

Figure 1. Parts of a Window	9
Figure 2. Dialog Boxes	12
Figure 3. Distributed Premiere System	17
Figure 4. Premiere Jumper Selection	18
Figure 5. RS232 Cable	19
Figure 6. Connections Between Processors	20
Figure 7. RS485 Cable	21

Table of Tables

Table 1. Edit Menu Commands	81
Table 2. File Menu Commands	88
Table 3. Edit Menu Commands	95
Table 4. Login Menu Commands	98
Table 5. Tools Menu Commands	116
Table 6. View Menu Commands	118
Table 7. Window Menu Commands	119

Introduction and Assistance

This manual provides information on the installation and operating procedures for the Premiere Network Manager software.

Manual Organization

This manual contains information about installing and using the Premiere Network Manager software. It contains the following chapters plus and index:

Introduction (chapter 1) - tells you about the organization of this manual and explains the typographical conventions used. In addition, it contains a glossary of terms used in this manual, and tells you how to get technical help if necessary

Navigating Windows (chapter 2) - tells you the basics of navigating through programs written to run under Microsoft Windows 3.1x or Windows for Workgroups. Navigating under Windows 95 is slightly different and is not covered in this manual. Please see your Windows 95 manual or on-line help for more assistance.

Installation (chapter 3) - tells you how to install and start up the software.

Reference (chapter 4) - tells you what each of the menus, screens, and dialog boxes do. This chapter is organized alphabetically by the name of the screen or dialog box.

Tutorial (chapter 5) - takes you through creating a Premiere Network Manager setup, and controlling the lights in your facility.

Conventions

In this book, "Windows" is used to mean any version of Windows 3.1x, Windows for Workgroups 3.1x, or Windows 95. Screen captures are shown in their Windows 3.1 versions. If you are running under Windows 95, the windows and dialog boxes will look different, but will function the same as under Windows 3.1.

(keycap image) shows keyboard keys.

OK (Helvetica bold text) shows the text of a control you should use with a mouse (e.g., "click on **OK**").

On (Times italic text) shows a menu selection or a dialog box title.

ON (all capital Times text) shows the status of a function or switch, as in "Turn the switch **ON**."

Glossary of Terms

The following terminology is used throughout this manual for consistency. Please also refer to *General Terminology* in the *Navigating Windows* chapter for terms specific to the Windows environment, and to *Commands* in the *Reference* chapter for definitions of specific Premiere commands.

astronomical clock The Premiere Processor has an internal clock that keeps track of both time and date for use with automatic events programming. The events can be programmed to occur at a specific time and date, and also at sunset or sunrise. The processor can calculate these varying times throughout the year from knowing the latitude of the installation and the sunrise time entered on the day of installation.

channel An arbitrary group of one or more dimmers controlled as a fixed group. The allocation of dimmers to channels is called "Patching". System patching is accomplished through the Premiere Configuration Program.

Cleanup One of the 128 presets available per room. This preset automatically fades out after one hour. Channels are assigned to the preset during system configuration using the Premiere Configuration Software.

configuration file The file created by the Premiere Configuration Software. This file is loaded into the Premiere Processor to configure it for a facility, and is also used by the Premiere Network Manager.

configuration software See Premiere Configuration Software.

control station A control point within the facility consisting of pushbuttons with which the user can select different lighting setups (called presets) or control functions, and/or slider controls with which the user can directly control lighting levels.

delay time The elapsed time between selecting a preset to the beginning of the preset fade. You can set the delay time for each preset to a value between 0.1 seconds and 9 hours (inclusive). Delay times between 0.1 seconds and 30 minutes can be set in 0.1 second increments. Delay times between 30 minutes and 9 hours, it can be set in 1 minute increments.

fade time Fade time is the programmed time for fading from one set of light levels to another. You can set the fade time for each preset to a value between 0.1 seconds to 9 hours (inclusive). Fade times between 0.1 seconds and 30 minutes can be set in 0.1 second increments. Fade times between 30 minutes and 9 hours can be set in 1 minute increments.

group An arbitrary grouping of stations, rooms, or other groups that you can set up to help control multiple Premiere controllers from the Premiere Network Manager software.

group box A group box is a labeled box that encloses related controls.

hard disk An on-line storage medium for PCs where the Premiere Network Manager and the configuration files for the Premiere Processors on the network are stored. The main hard disk on a PC is usually called the "C" drive.

hold time The programmed time that presets wait after completion before moving automatically to the next preset. You can set the hold time for each preset to a value between 0.1 seconds and 9 hours (inclusive). Hold times between 0.1 seconds and 30 minutes can be set in 0.1 second increments. Hold times between 30 minutes and 9 hours can be set in 1 minute increments. Hold times greater than 0.1 seconds will cause an automatic follow-on when the preset is selected twice. You can use hold times to program a series of automatic fades or loops.

level The level of an individual channel, expressed as a percentage (i.e., 00-99).

link A software connection between rooms that specifies which room's presets will control the lights.

next preset The preset that will be automatically started at the end of the hold time.

password Your password, which you enter when you log in, determines what items in the software you can access and change. Passwords are not case sensitive.

Premiere Configuration Software Premiere offers the ability to customize pushbuttons and faders on control stations to perform different functions at any time. The Premiere Configuration Software is used to define the number of rooms, channels, stations so that the system meets the requirements of a specific installation. It can also be used to assign any one of over 90 functions to pushbuttons or faders on each control stations. Copies of the configuration file for all of your Premiere Processors must be on the same PC as the Premiere Network Manager.

preset A pre-defined arrangement of intensities for a group of channels that is stored in memory for recall when required.

Processor ID The network ID of each Premiere Processor and the PC with the Premiere Network Manager software. The Processor ID is assigned to the Premiere Processor in the *Job Info* dialog box of the Premiere Configuration Software.

room link group A room link group is a group set up to restrict the possible room link combinations. You should set up a room link group for each set of rooms that can be linked. This group then

determines the choices available when someone tries to link rooms.

status group A status group is a group that is set up to contain other groups or rooms for showing and modifying status information.

toggle An alternate action push-button or control.

top group The top group is the main status group from which all other groups branch out. There can only be one top group in each Premiere Network Manager file.

Technical Assistance

The Premiere Network Manager is designed for simple facility management or programming of individual or multiple Premiere systems using a standard MS/PC-DOS compatible computer with a 3.5" floppy disk drive. This software runs under Microsoft Windows 3.1x, Windows for Workgroups 3.1x, and Windows 95. In this manual, all three of these operating systems are referred to as "Windows."

Problems If you have problems installing or operating this software, please contact Strand Lighting Field Service at the office serving your area for assistance. Before returning any defective parts, make sure you know the proper parts return procedures for your area.

Technical Questions For technical questions regarding setup or operation of this software, please contact the Strand Lighting Field Service office serving your area.

Parts Purchases For purchase of spare parts or documentation, please contact the Strand Lighting office serving your area.

Comments and Suggestions For comments regarding equipment functions and/or possible improvements, or for comments on this manual, please call or write to the Marketing Manager at the Strand Lighting office serving your area.

Addresses Addresses for all of the Strand Lighting offices are shown on the reverse side of the manual title sheet.

Navigating in Windows

Before you start using the Premiere Network Manager software, you should be familiar with your computer and its user's manual. You need to know how to turn the computer on, which disk drive is the 3.5" floppy disk drive, and what keys you press to reset, or "boot", your computer.

Although you should also be generally familiar with Windows and how to navigate in Windows programs, this chapter provides a basic review and shows the terminology that will be used in this manual.

General Terminology

The following terminology is used throughout this manual, and is generally considered standard when working with graphical user interfaces such as Windows. Additional terms are defined under *Parts of a Window* and *Dialog Boxes* later in this chapter

- activate** To activate a window that is already open, click anywhere on the window or choose the window name from the *Window* menu. To activate a window that is not open, open the window.
- application** A computer program used for a particular kind of work, such as word processing or document management. Your Premiere Network Manager software is an application.
- choose** Select an item from a menu. Click on the main menu item and then click on the item in the drop down menu, or click on the menu item, drag to the drop down menu item, and release the mouse button.
- click** Position the mouse cursor on top of an item and press and release the left mouse button once.
- directory** A collection of computer files (programs and data) that are stored at the same location on a disk. The name of the directory identifies its location.

- double click** Position the mouse cursor on top of an item and press and release the left mouse button twice in quick succession. (e.g., ". . .and double-click on the item you wish to choose from the list). If the clicking occurs within the time set in your Windows Control Panel, Windows will interpret the two clicks as a single gesture.
- double right-click** Position the mouse cursor on top of an item and press and release the right mouse button twice in quick succession. (e.g., ". . .and double right-click on the item you wish to choose from the list"). If the clicking occurs within the time set in your Windows Control Panel, Windows will interpret the two clicks as a single gesture.
- drag** Press the left mouse button and move the mouse while keeping the button pressed. When the desired action is completed, release the mouse button. Drag refers to an action sequence (mouse down, mouse move, mouse up), such as "Drag the button in the scroll bar. . ."
- edit** Modify an entry using standard Windows text editing techniques.
- menu command** A word or phrase that you choose to carry out an action. Menus appear at the top of your screen. You can pull down the menus to choose a command.
- point** Move the mouse until the tip of the mouse pointer rests on the item of choice.
- right click** Position the cursor on top of an item and press and release the right mouse button once.
- scroll** Scroll a list or window by dragging the scroll bar button to the desired position, or clicking on the scroll arrows. Clicking on the scroll bar itself moves the window or list faster than clicking on the scroll arrows.
- toggle** An alternate action push-button or control.
- window** A rectangular area on screen that contains a software application (application window) or a document (document window or child window).

Parts of a Window

The Premiere Configuration Software screen consists of the key components shown in figure 1.

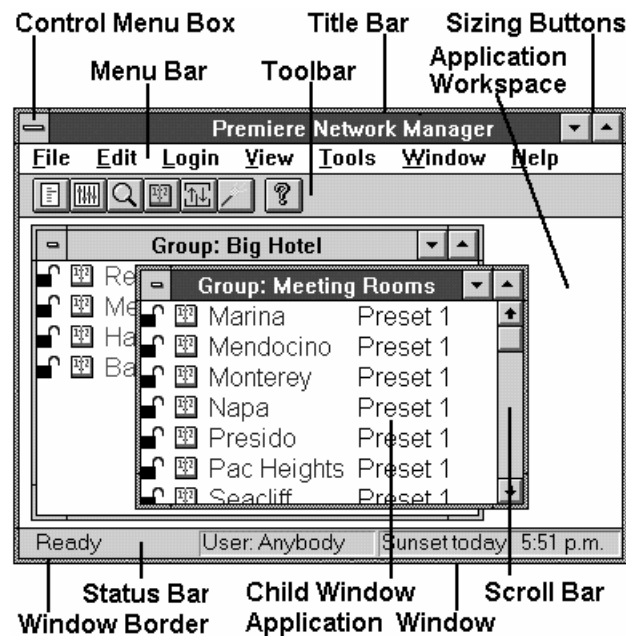


Figure 1. Parts of a Window

active window The window you are currently using or that is currently selected. If a window is active, its title bar changes color to differentiate it from other windows. The other windows are inactive.

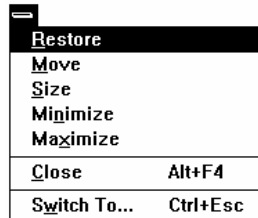
application window A window that contains a running application, such as Premiere Network Manager. The window displays the menus and provides a workspace for any Premiere Network Manager file open in the application.

application workspace The space within the main application window within which the child windows must run.

child window A rectangular area inside an application window that contains a document. Child windows can be resized and moved within the application window, but can never be outside the application window or larger than the application window. In Premiere Network Manager, the Preset Editor, Event Editor, and Status windows are all child windows.

dialog box A temporary window that appears to request or supply information. Many dialog boxes have options you must select before your program can carry out a command. See *Dialog Boxes* later in this chapter for details.

Control menu



The Control menu lets you move, resize, and close a window. Click on the Control menu button to see the menu.

Double-clicking a Control-menu box is the same as choosing the Close command.



menu bar The Menu Bar contains the top level menu items. You can access the menus for the top level items by clicking on the item or by holding and pressing the letter that is underlined in the menu item.

For instance, press to see the File menu.

scroll bar Scroll bars can be horizontal or vertical. They indicate that there is more of the window or list than can be shown at one time. Scroll a list or window by dragging the scroll bar button to the desired position, clicking on the scroll arrows, or using the up-arrow and down-arrow on your keyboard. Clicking on the scroll bar itself moves the window or list faster than clicking on the scroll arrows.

sizing buttons The sizing buttons in the upper right corner of a window let you maximize or iconize the window.

Click on the down arrow to iconize the window. The Window turns into an icon and appears at the bottom of your screen. To restore an icon into a window, double-click on the icon.



Click on the up arrow to "maximize" the window (make the window fill your entire screen). The up arrow will change to a double ended arrow to show that the window is maximized. You can then click on the down arrow to iconize the window, or click on the up/down arrow to restore the window to its previous size.



- status bar** The status bar shows messages and other information to help you use your software. The status bar appears on the lower border of your application window.
- title bar** The title bar shows the name of the file, application, dialog box, or toolbar. It changes color to show whether the window or dialog box is active. If you click and hold on the title bar you can use the mouse to move the window, dialog box, or toolbar.
- toolbar** The toolbar is displayed across the top of the application window, below the menu bar. It provides quick mouse access to many tools used in Premiere Network Manager.
- window border** The window border lets you easily distinguish the edge of the current window. It changes color (along with the Title Bar) to show whether the window is active or not. You can resize many windows by pointing to the border, clicking on the left mouse button, and dragging the mouse to move the border.
- window name** In the main window, the window name shows the application name. In Status windows, the window name shows the name of the group (preceded by "Group:") or room (Preceded by "Room:"). In editing windows (e.g., the Preset Editing window), the window name shows what you are editing.

Dialog Boxes

Dialog boxes appear to let you input data to the program when necessary.

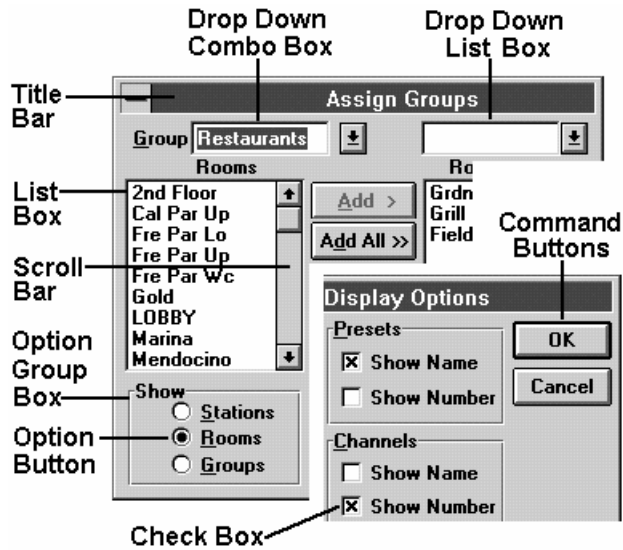


Figure 2. Dialog Boxes

check boxes Check boxes let you turn a feature on or off. The feature is on when the box contains an "X." Click the box to check or uncheck it as required.

command buttons Immediate action buttons which open a dialog box or start a process. The default button on any dialog box has a wider black border than any other button. Pressing **Enter** is that same as clicking this button. Pressing **Esc** is the same as clicking the **Cancel** button.

group box A labelled box that encloses related controls.

lists Windows defines four types of lists:

- A List Box lets you select from a list that is always fully visible. You can only select items that are on the list. Select an option by clicking on the entry in the list. If there are more entries than the list can show at one time, scroll to the entry and click on it.
- A Drop Down List Box shows the current entry but hides the list until you click on the arrow button to the right of the current entry. You cannot select multiple items from a drop down list.

- A Combo Box (not illustrated) is a list box that also lets you type your own entry. Select an entry by clicking on it. If there are more entries than the list can show at one time, scroll to the entry and double-click on it. Some combo boxes let you select multiple items from the list.
- A Drop Down Combo Box is a combo box which hides the list until you click the arrow button to the right of the text entry box. You cannot select multiple items from a drop down list.

*In most lists, double-clicking on an entry is the same as selecting the entry and then clicking **OK** in the dialog box.*

option button Option buttons let you select one of two or more mutually exclusive choices. Clicking on an option button selects that button and deselects all other buttons in the group. A series of option buttons is sometimes called an "Option group."

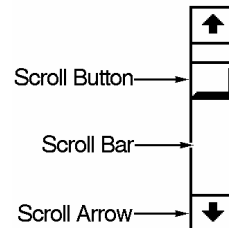
scroll bars Scroll bars let you scroll through a list to find the entry you wish to select.

text box A text and/or numeric entry box (not illustrated) lets you directly enter text or numbers. Text boxes are often filled with default values when they first appear.

Using a Scroll Bar

Some windows and lists have scroll bars you can use to view text that requires more than the available space.

Drag the scroll button up or down the scroll bar (or left or right in a horizontal scroll bar) to the position of choice. The section of the document or list that moves into view depends on the placement of the scroll box.



Click on one of the scroll arrows to scroll one line

Click on one of the scroll arrows and hold the mouse button down to scroll continuously until the information you want comes into view.

Scrolling with the Keyboard

You can also scroll around the screen or a window by using keyboard commands.

Press , , , or to scroll in the direction of the arrow.

Press to scroll to the next "page" of information.

Press to scroll to the previous "page" of information.

Press to scroll to the beginning of a line.

Press to scroll to the end of the line.

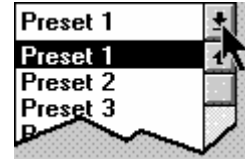
Press to scroll to the beginning of the document.

Press to scroll to the end of the document.

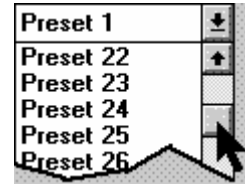
Using Lists

Select a list item

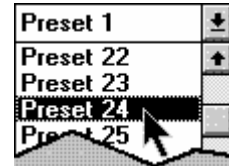
Click on the down arrow to show the list.



Use the scroll button to scroll the list if the correct entry is not showing.



Click on the list item you want to select. The list will disappear and the new selection will appear in the list box.



Select multiple items

To select an item and deselect all other items, click on the item.



To select a range of items, point to the starting item and press the left mouse button. Then drag to the final item and release the button. Or, click on the starting item, then click on the ending item while holding the **Shift** key.



To select or deselect a single item without changing the selection status of any other items, click on a single item while holding the **Ctrl** key.



Text Editing

Some windows, dialog boxes, and lists have text boxes that you edit directly using Windows text editing techniques. The cursor will change to an "I-beam" when it is over a text box.

Edit Using a Mouse

Position the "I-beam" at the start of the text you wish to modify.

Drag the "I-beam" to the end of the text you wish to modify (press the left mouse button and hold it while moving the cursor).

Type the new text. The old text will disappear and will be replaced with the new text.

Replace an Entire Entry Using the Keyboard

Tab to the text box. Each time you press a new box or control will be highlighted. When you get to the text box the entire entry will be highlighted and the "I-beam" cursor will appear at the right end of the entry.

Type the new text. The old text will disappear and will be replaced with the new text.

Replace Part of an Entry Using the Keyboard

Tab to the text box. Each time you press a new box or control will be highlighted. When you get to the text box the entire entry will be highlighted and the "I-beam" cursor will appear at the right end of the entry.

Use and to position the cursor to the left of the text you wish to replace.

Use to delete the characters you wish to replace

Tab to the next control or text box you wish to use, or press if you are finished with the dialog box.

Installation

This chapter tells you how to set up a Premiere system with multiple processors controlled by the Premiere Network Manager.

The Distributed Premiere System

The following figure shows a typical distributed Premiere system. The system has multiple Premiere Processors, a PC with multiple plug-in locations, control stations, and dimmers.

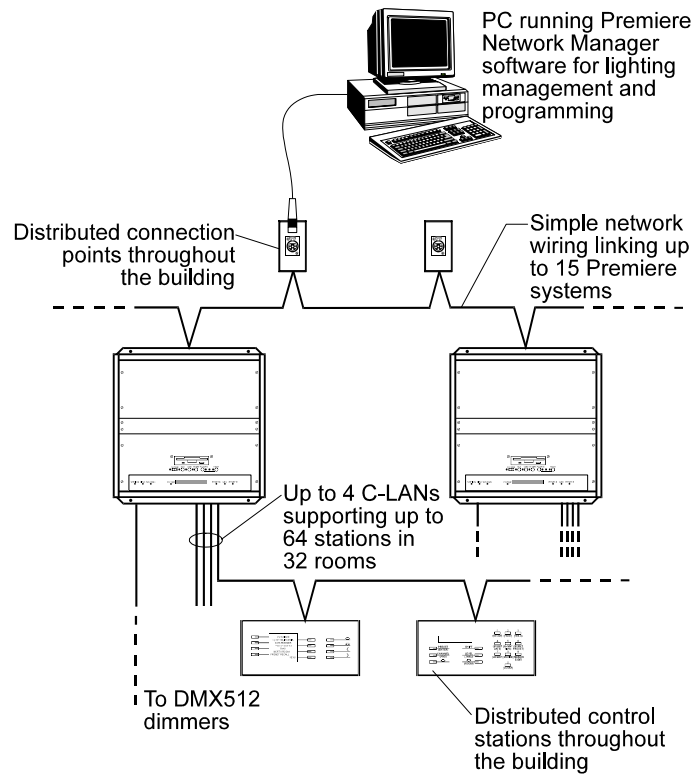


Figure 3. Distributed Premiere System

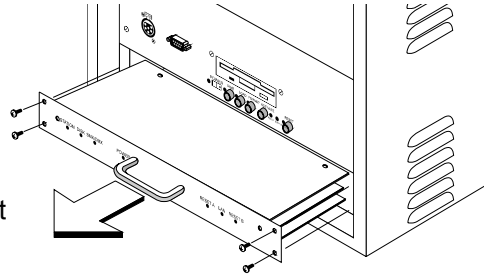
Selecting the Data Protocol

The Premiere Network Manager PC is connected to the network through an RS232 or RS485 connection (jumper selectable) on one of the processor cabinets, or through a remote receptacle wired to the motherboard in the cabinets. Each processor has a 6-pin "XLR" style connector for RS232 or RS485 (jumper selectable), and a 9-pin "D" style connector for RS232 connections.

The RS232 connection is for direct connection to a single Premiere cabinet and for applications where the maximum total wiring distance is less than 50 feet. The RS485 connection is for all other systems, and requires a separate RS485 adapter on the Premiere Network Manager PC. Premiere Processors are normally supplied configured for RS232.

To change the data protocol to use, you must remove the Premiere Processor from the cabinet.

1. Remove four (4) screws that secure the processor to the cabinet.
2. Pull the Premiere Processor straight out from the cabinet.



1. Set the jumpers according to the silk-screened diagram on the Premiere Processor.
2. Replace the Premiere Processor in the cabinet.

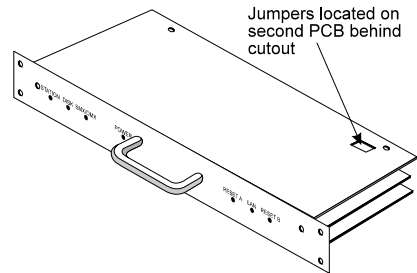
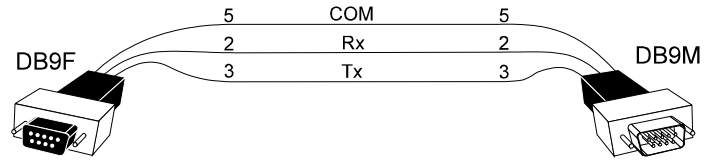


Figure 4. Premiere Jumper Selection

RS232 Connections

A cable fitted with 9-pin D-type connectors is provided for RS232 installations. This cable should be connected directly between the PC and the Premiere Processors, since RS232 connections are rated for only 50 feet.



Cable:		Cable suitable for EIA-RS232 (e.g., Belden 8777 or similar).		
Max Length:		50 feet (15m - all RS232 specifications apply).		
Connector:		9-pin miniature D type male connector on the front of the Premiere cabinet.		
Pin #	Signal	Comments	Pairs	Cable Color
2	RCV	RS232 Receive	pair 1	black
3	XMT	RS232 Transmit		white
5	COM	RS232 Common (Ground)		shield

Figure 5. RS232 Cable

RS485 Connections

The Premiere Network Manager PC is tied to one or more Premiere Processors through an RS485 network. This network is connected using terminal blocks on the Premiere cabinet motherboards. The network can include up to 15 Premiere Processors plus the Premiere Network Manager PC. The total allowable length of wiring in an RS485 system is 1000 feet.

For RS485 installations, an RS485 converter may be supplied with your system. Please consult your system riser diagrams for wiring and pinouts.

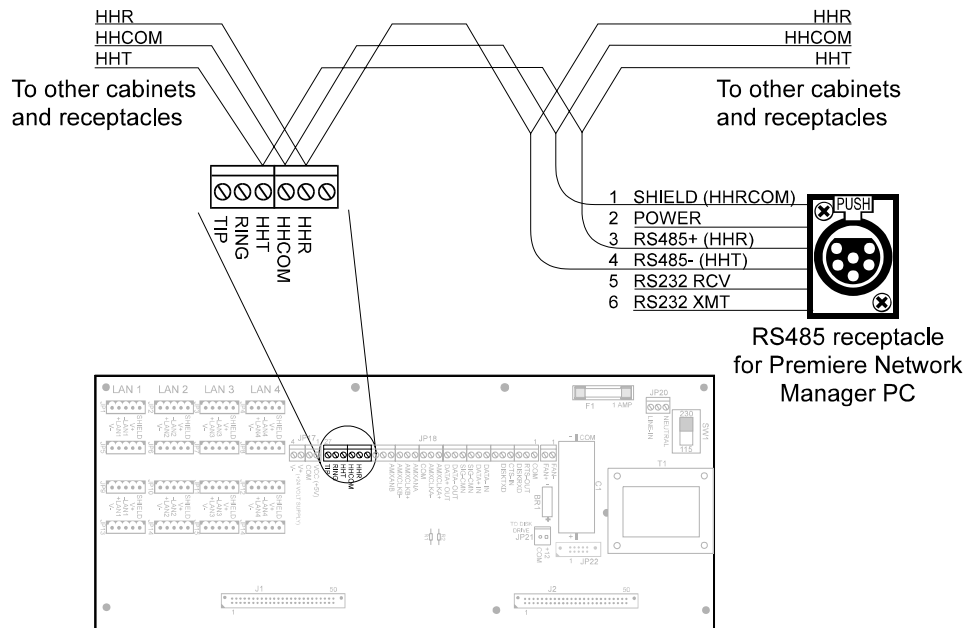
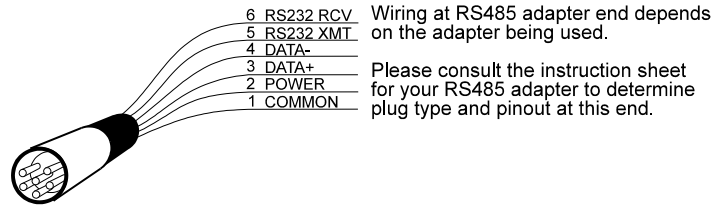


Figure 6. Connections Between Processors



Cable: Cable suitable for EIA-RS485 (e.g., Belden 9841 or similar)
 Max Length: 1000 feet (300m - all RS485 specifications apply).
 Connector: Terminals on Premiere cabinet motherboard. 6-pin "XLR" type female jack on the front of the Premiere cabinet.

XLR Pin #	Signal	Comments	Pairs	Cable Color
1	GROUND	Ground		shield
2	POWER	+12V		
3	RS485 +	RS485 data true	pair 1	black
4	RS485 -	RS485 data complement		white
5	RS232 RCV	Reserved for RS232 Receive (if selected)		
6	RS232 XMT	Reserved for RS232 Transmit (if selected)		

Figure 7. RS485 Cable

What You Need to Run the Software

To run the Premiere Network Manager software you will need the following:

- The Premiere Configuration files for each of the processors. These files must be modified to include a unique processor number.
- Intel 386, 486, Pentium or 100% compatible computer.
- At least 8Mb of RAM.
- A 720Kb or 1.44Mb floppy disk drive.
- A hard disk drive.
- MS-DOS 5.0 or higher.
- Microsoft Windows 3.1x, Windows For Workgroups 3.1x, or Windows 95.
- A Windows compatible pointing device, such as a mouse.
- A color monitor is recommended but not essential.
- Software key

Installing the Software Key

The software key (sometimes called a "dongle") must be installed to one of the parallel ports on your computer for the software to run. This ensures that the software is running on only one PC at a time.

If you are using a parallel printer, you can plug the parallel printer cable into the output of the software key.

1. Remove the parallel printer cable from the parallel port where you wish to install the software key.
2. Install the software key, using the captive screws in the connector to secure it to the PC.
3. Re-install the parallel printer cable, using the captive screws in the connector to secure it to the software key.

Installing the Software

To install the Premiere Network Manager software in Windows 3.1:

1. Insert the program disk into a floppy disk drive.
2. From the Program Manager *File* menu, choose Run.
3. Type A:INSTALL (or B:INSTALL if you are installing from your B drive).
4. Press **Enter**.
5. Follow the instructions that appear on the screen.

To install the Premiere Network Manager software in Windows 95:

1. Insert the program disk into a floppy disk drive.
2. Click the **Start** button.
3. From the *Start* menu, choose *Settings* and then choose *Control Panel*.
4. Double-click the **Add/Remove Programs** icon.
5. Click **Install** to open the Installation wizard.
6. Click **Next** to have the Installation wizard search for the installation file.
7. Click **Finish** to start the installation program.
8. Follow the instructions that appear on the screen.

A new program group will appear with icons for the Premiere Network Manager and its help files.

Getting Started

Starting the software and configuring the system and software are covered in the first part of chapter 4 "Tutorial." The first section of the tutorial includes information on the files that Premiere Network Manager uses, and what these files do. The basic steps involved in the process are:

1. Make sure that all of the Premiere Configuration files for your Premiere Processors are stored on the PC. If you are copying them from a Premiere Processor, rename each one as you transfer it to the PC with a unique file name (up to 8 characters) and .PRE extension.
2. Start the software.
3. Start and save a new Premiere Network Manager file.
4. Set up the PC's Processor ID and communications port.
5. Set the time, date, and astronomical information.
6. Set up user privilege levels.
7. Set up status and link groups.

Tutorial

This chapter provides a step by step guide to using the Premiere Network Manager software. For questions about specific commands, you should look in the Reference chapter, where items are organized alphabetically.

Files

Before starting the program, you should be aware of the file conventions used by this program.

Premiere Network Manager Files

The Premiere Network Manager file (xxxxxxx.PNM) contains all of your group and network macro definitions, font definitions, and pointers to the Premiere Configuration files for the processors in the system. The Premiere Configuration files contain channel, preset, room, and station names, preset and event data, and processor macros.

By default, when you save a file using *Save as* from the *File* menu, the system will suggest the name "DEFAULT1.PNM." If this file already exists in the current directory, it will suggest "DEFAULT2.PNM." Files with this extension are referred to as "Premiere Network Manager files" throughout this manual.

You can save a Premiere Network Manager file with any name, but finding it with the *File Open* dialog box will be much easier if you at least use the "PNM" file extension for all files you are editing or archiving.

Premiere Configuration Files

When you select **Add** in the *Configuration File Selection* dialog box, only files with a "PRE" file extension appear in the list box. If your Premiere Configuration files (xxxxxxx.PRE) were saved with extensions other than "PRE" (e.g., FILE1.E3 for loading into the processor) you must rename them using the Windows File Manager before the Premiere Network Manager will recognize them.

Premiere Disk Files The configuration file that is transferred to the Premiere Processor must be named "FILE1.E3". This file is referred to as the "Premiere disk file" throughout this manual. Generally, you should edit a separate Premiere Configuration file and save it as FILE1.E3 only to the floppy disk you will be using to transfer that data to or from the processor.

When bringing a Premiere Configuration file from a processor to your PC, use the Premiere Configuration Software to open the file on the floppy disk and immediately save it with a "PRE" extension and a unique name.

Automatic File Open When you start the Premiere Network Manager software from Windows, it will automatically open the last file you were working on. If it has no record of a last file (i.e., this is the first time you opened the software, or you inadvertently erased the PNM.INI file from your Windows directory) you will get a blank Premiere Network Manager window. If you are using the software for the first time, choose *New* from the *File* menu to start a new file. If PNM.INI was accidentally erased, you can start a new file, or choose *Open* from the *File* menu to open an existing file.

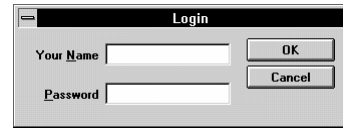
File Errors If you try to open a non-existent file you will get an error message telling you that there was a problem opening the file. When you click on *OK* the Premiere Network Manager starts a new .PNM file.

Startup

Starting Premiere Network Manager

Start the Premiere Network Manager software from Windows in the most convenient manner for you. See your Windows User's Guide if you have any questions about how to do this.

If there is more than one person defined with privileges, the *Login* dialog box appears.



Type your name in the **Your Name** text box and click **Tab**.

Type your password in the **Password** text box and click **OK**.

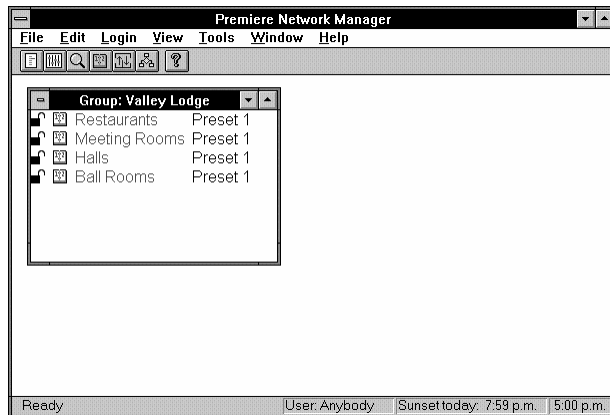


The *About* dialog box appears.

The "Demo Only" indication appears only if you do not have the software key installed. When running in Demo Only mode, the software will not communicate with Premiere Processors, but all other functions will be fully accessible.

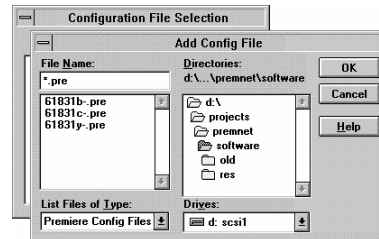
*If you click **Cancel** in the Login dialog box, you will be able to access the software, but you will only have the access privileges assigned to the "Anybody" user. The "Anybody" user is set up as a default with full privileges, but should be modified to restrict access once you create other users to define access privileges.*

Click **OK** or press **Enter** to dismiss the *About* box and see the Premiere Network Manager main window. The last file you used is loaded, and its top group appears in a child window.



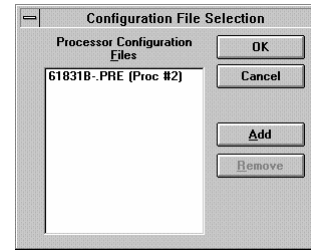
Starting a New File To start a new file based on the current file, choose *Save As* from the *File* menu, save the current file with a different name, and continue working. To start an entirely new file, use the *New* command from the *File* menu.

Choose *New* from the *File* menu or press **Ctrl+N** to open the *Configuration File Selection* dialog box. Since you must assign at least one Premiere Configuration file to any project, the *Add Config File* dialog box is opened over the *Configuration File Selection* dialog box.

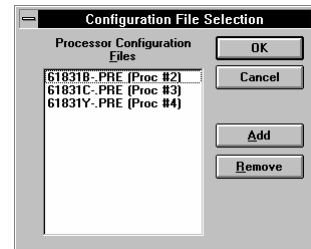


This dialog box will only show Premiere Configuration files that are named with a ".PRE" extension. If your Premiere Configuration files were saved using another extension, you must rename them before you can add them to the Processor Configuration File list.

Choose a Premiere Configuration file and click **OK**. On the example system there are three Premiere Configuration files that will be added to the Processor Configuration Files list. Each of these files is from a Premiere Processor that will be accessed by the Premiere Network Manager software. You must add the necessary Premiere Configuration files to the list one at a time.



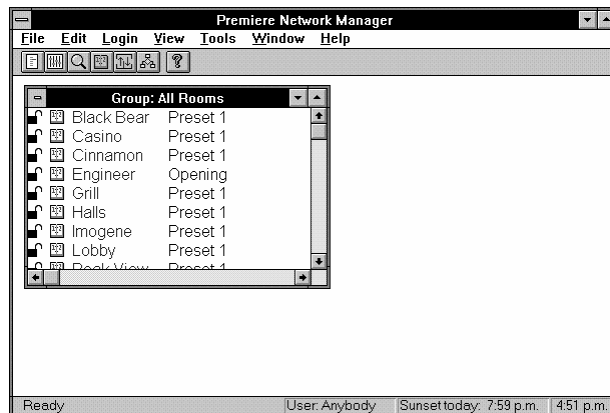
Click Add to open the *Add Config File* dialog box and add additional Premiere Configuration files to the list if necessary.



Before you leave this dialog box, note a processor number that is not in use (in this example, processor #1 is a free processor). You will need this information later.

Click OK or press **Enter** to save the Processor Configuration File list and open the new file.

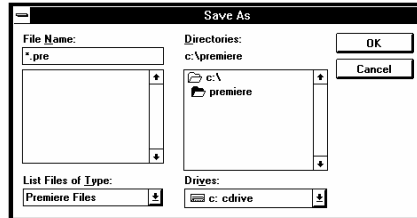
When you first open a file, the software shows rooms in the selected configuration files in a group named "All Rooms."



Saving the File You should periodically save any Premiere Network Manager file you are working on to protect your work. Whenever you close a window or dialog box in which data was not automatically saved, you will be prompted to save the file. You can also save the file any time by using by choosing *Save* from the *File* menu.

Choose *Save* from the *File* menu or press to save the current file without changing its name.

Choose *Save As* from the *File* menu or press to open the *Save As* dialog box.



The suggested file name is "DEFAULT1.PNM".

If you type a name with no extension, the software will add a ".PNM" extension when it saves the file.

Enter the new name for the file in the **File Name** text box or select it using the **Save File as Type**, **Drives**, **Directories**, or **File Name** list boxes.

Click **OK** or press to save the file with the new name and close the dialog box.

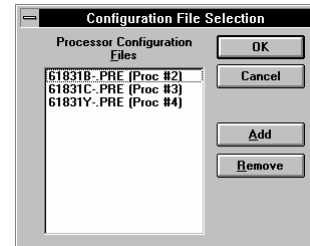
Click **Cancel** or press to close the dialog box without saving the file.

Configuring the System Before you proceed with creating your Premiere Network Manager file, you should configure your system. The commands shown below are only available when you already have a Premiere Network Manager file open.

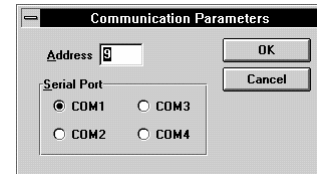
Setting Communications Parameters

In order to communicate with the Premiere Processors, the PC must have a network address. This address must be different from addresses used by any of the Premiere Processors, as set in their Premiere Configuration files. You also need to tell the Premiere Network Manager which COM port the PC is using to communicate with the network.

Find and remember a processor address that is not in use. To see which addresses are in use, choose *Configure* and then *Select Processors* from the *File* menu. The processor addresses for individual Premiere Processors are set in their Processor Configuration files. You must use the Premiere Configuration Software (v 2.0 or later) to change processor addresses if necessary.



Choose *Configuration* from the *File* menu. Then choose *Communications* from the submenu. The *Configuration Parameters* dialog box appears.



Enter the unused processor address that you found using the *Configuration File Selection* dialog box.

Click the **Serial Port** option button for the correct COM port.

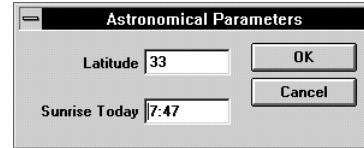
Click **OK** or press **Enter** to save the new settings and close the dialog box.

Click **Cancel** or press **Esc** to discard changes and close the dialog box.

Setting the Astronomical Time Clock


Premiere Processors contain an astronomical time clock. This clock keeps track of sunrise and sunset times, and lets you set events to happen relative to the sunrise or sunset. You can set the astronomical variables for the Premiere Processor time clocks in the *Astronomical Parameters* dialog box.


Choose *Configuration* from the *File* menu. Then choose *Astronomical* from the submenu. The *Astronomical Parameters* dialog box appears.



Enter the latitude of your facility here. Use positive values for northern latitudes and negative values for southern latitudes. For latitudes above 64 degrees North, use 64 degrees. For latitudes below 64 degrees South, use -64 degrees.

Enter today's sunrise time. Use 24 hour, hh:mm format for time.

Click **OK** or press  to record the new settings in the Premiere Processors and close the dialog box. This records the settings to all of the Premiere Processors listed in the *Configuration File Selection* dialog box.

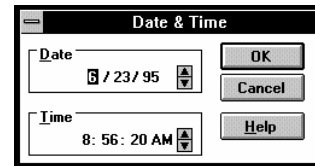
Click **Cancel** or press  to discard changes and close the dialog box.

Setting the PC Clock

Premiere Network Manager lets you open the Windows date and time applet directly from the configuration submenu so that you can easily check and correct the PC clock as required.

Since the original IBM PC, the clocks in all PCs have been slightly inaccurate. This is inherent in the relationship between the system frequency and real time. Although this is a small enough error that many people ignore it, it may become critical when you are trying to time events precisely. Unless you have hardware and/or software that automatically compensates for the slight inaccuracies in PC clocks, you should check the clock every few weeks.

Choose *Configuration* from the *File* menu. Then choose *Set Time* from the submenu. The Windows *Date and Time* dialog box appears.



Enter The correct date and time of day.

The date and time access, together with the Synchronize Time feature (see below) is a convenient way of setting all of the Premiere Processors on a network to the same time and date. This functionality was previously available only through 2300 control stations.

Synchronizing Time

In order to synchronize events between processors, the processors must be synchronized.

Choose *Configuration* from the *File* menu. Then choose *Synchronize Time* from the submenu. The processor time clocks are all updated.

Loading Events

Since events can be created either in the Premiere Processors or in the Premiere Network Manager software, the software lets you return to a known state by clearing out all events in the processors and reloading them with events defined in the Premiere Network Manager file.

Events created on-line from Premiere 2300 stations will not be visible in Premiere Network Manager. Events created in the original Processor Configuration file or in Premiere Network Manager will be visible.

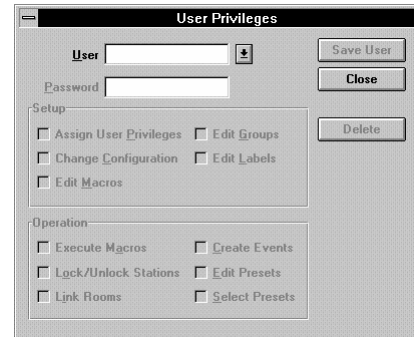
Choose *Configuration* from the *File* menu. Then choose *Load Events* from the submenu. The processor events are all deleted, and all processors are reloaded with events defined in the original Processor Configuration file and from Premiere Network Manager.

User Privileges

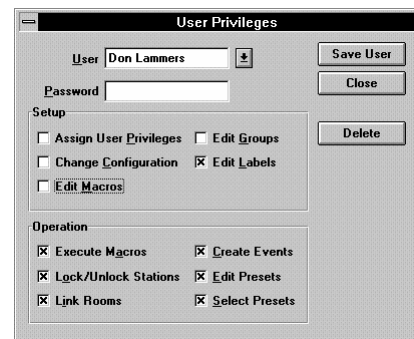
In order to keep unauthorized persons from using the Premiere Network Manager, you can set access privileges for those people who are authorized to use the system.

Creating New Users New users are defined through the *User Privileges* dialog box.

Choose *Users* from the *Edit* menu. The *User Privileges* dialog box appears.



Type your own name and press **Enter**. You will be asked if you want to create a new user.

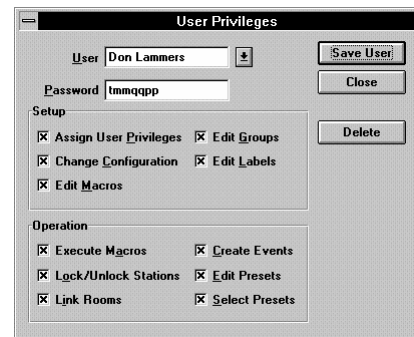


Click **OK** to create the new user.

Type a password that you can remember.

Check All of the check boxes to give yourself full privileges.

Click **Save User** to save the new user information.



Select the Anybody user from the **User** list. This is the user that is logged in when no other user is logged in. If you try to log in to the Premiere Network Manager and click **Cancel** to exit the *Login* dialog box, the Anybody user will be active.

Uncheck *all items you don't want casual users to access.*

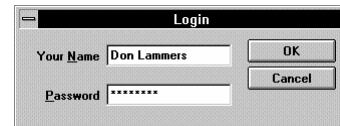
Click **Save User** to save the new user information.

Create user information for any other users that need special access to the system.

Click **Close** to close the *User Privileges* dialog box.

Logging In Although you can access anything allowed for the Anybody user without ever logging in to the Premiere Network Manager, to access additional functions you must log in under the appropriate name and password.

Choose *Login* from the *Login* menu. The *Login* dialog box appears.



Enter your name and password. The actual password does not appear on screen.

Click **OK** to log in. Your name will appear in the status bar at the bottom of the application window.

Click **Cancel** to close the dialog box without logging in. The "Anybody" user will automatically be logged in.

Logging Out When you are finished working with Premiere Network Manager, you should log out so that passers by cannot easily change settings in the computer.

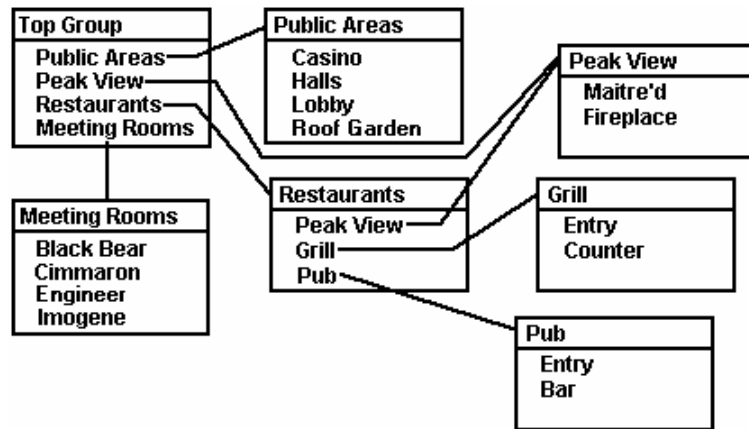
Choose *Logout* from the *Login* menu. You are logged out and the "Anybody" user is logged in.

Status Groups

Premiere Network Manager lets you create groups to organize the way in which you access various parts of your facility. These groups are called Status groups, and they let you organize groups, rooms, and stations to easily access and control your lighting. How you group your rooms will depend on the facility and the way in which it is used.

Organizing Status Groups

Before you can create groups, you need to determine how you want to group rooms in your facility. The figure below shows what a typical group tree might look like.



Typical Group Organization

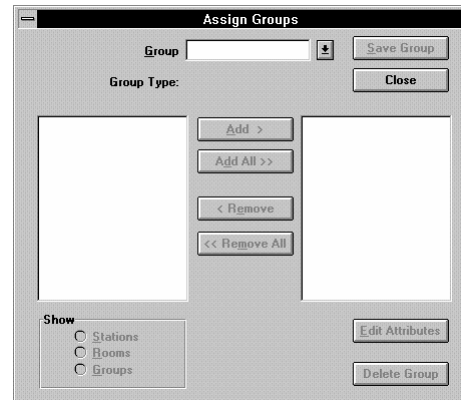
While organizing your groups, keep the following in mind.

- There must be one (and only one) Top group. This group can be opened from the *View* menu.
- You should be able to access all rooms from the top group, or from other groups accessible from this group. You do not need to include any link groups in your status groups, since these special groups can be accessed separately through the button bar and menu.
- Groups can contain other groups, rooms, and stations. You can mix these components in any way that is convenient for your facility. For instance, you may wish to make a top level group that contains all pushbutton stations to simplify lockout procedures.
- Since you cannot assign a non-existent group to another group, you need to create any groups that contain other groups from the bottom up, making the "top" group last.

- If you make major room groupings in your facility (e.g., Restaurants, Meeting Rooms, Public Areas) the second level of groups in the system, you can probably close the Top Group, and leave the status windows for the second level groups open all the time to access them easier.
- You can layer the groups as deep as you want, dependent only on the amount of memory in the PC. However, keep in mind that the fewer layers of groups/rooms you have, the easier it is to get to a room to control it. In a typical system, you should try to limit yourself to three layers (Top Group, major room groupings, rooms).
- You can control the same group, room, or station from more than one group. If you have a lower level group that you use frequently, you may want to make it accessible from the Top Group as well as its "normal" group. In the example system, the Peak View Restaurant appears in the Restaurants group. It also appears on the top group, since it is the most frequently changed room in this facility.

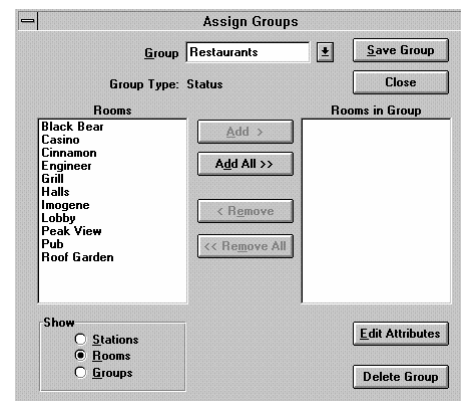
Creating Status Groups Create Status groups using the *Assign Groups* dialog box.

Choose *Groups* from the *Edit* menu to open the *Assign Groups* dialog box.



Type the name of the new group in the **Group** box.

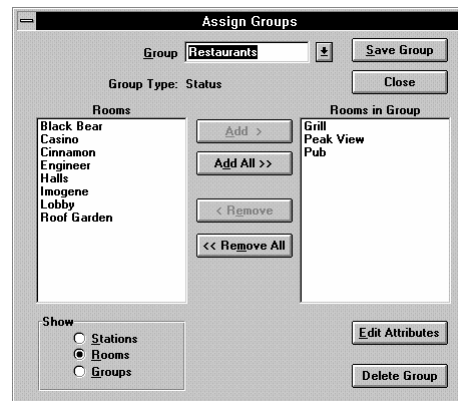
Press . You will be asked if you want to create a new group.



Click OK to create a new status group. The left hand list shows rooms. Use the **Show** option buttons to select what is shown in the left hand list box (rooms, groups, or stations).

Select the item or items from the left hand list box that you want to place in this group.

Click Add to add the item to the right hand list box.



*You can also double-click on an entry to move it to the other side, or click **Add All** to move all of the rooms, groups, or stations to the other side..*

Add additional items to the right hand list box as required. You can mix groups, rooms, and stations in the same group.

Click Save Group to save the new group.

Click Close to close the *Assign Groups* dialog box. You can create or edit additional groups before closing the dialog box if you wish.

Creating the Top Group The Top group is a special status group that you can access from the *View* menu. All rooms should be accessible directly from the top group, or indirectly through other groups.

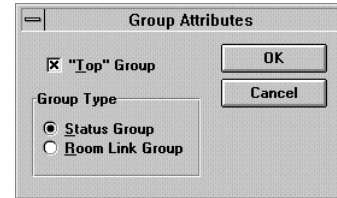
You should create the Top group last, so that you have already created all of the groups that you need to assign.

Create a status group with the items you want in the Top group, and an appropriate name. Don't save the group.

Click Attributes to open the *Group Attributes* dialog box.

Check the "Top" Group box.

Click OK to save the Top group status and close the *Group Attributes* dialog box.



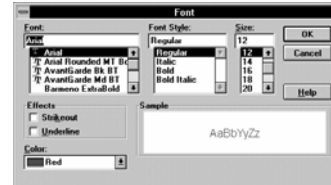
Click Save Group to save the new Top group.

Click Close to close the *Assign Groups* dialog box. You can create or edit additional groups before closing the dialog box if you wish.

Changing Display Fonts

It will be much easier to identify the various types of items in a group if you change the display fonts assigned to each item type. You can change all of the standard Windows font attributes for groups, rooms, stations, and presets to distinguish them.

Choose *Fonts* from the *View* menu. Then choose *Groups* from the submenu. This opens the standard Windows *Font* dialog box for changing the font used to display group names.



Click "Italic" in the Font Style List.

Click **OK** or press **Enter** to make all group names italic. If you wish, you can also change the size and color of the font at this time.

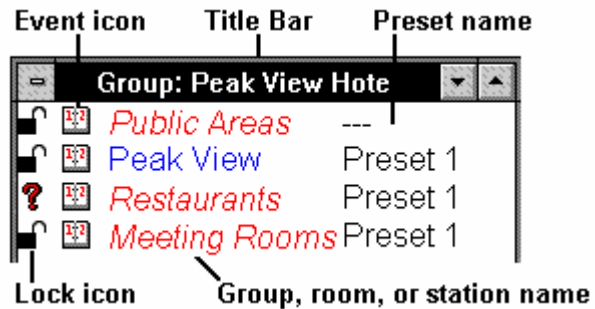
Click **Cancel** or press **Esc** to discard changes and close the dialog box.

Changing the font size for one item will change the font size for all items. All other font attributes are tracked per item type.


Accessing Groups and Rooms

Groups and rooms are accessed initially by opening the Top group and then opening each successive layer by double-clicking on the group you want to open.

Choose *Top Group* from the *View* menu to open the Top group for this Premiere Network Manager file. The basic components of a group window are shown below.

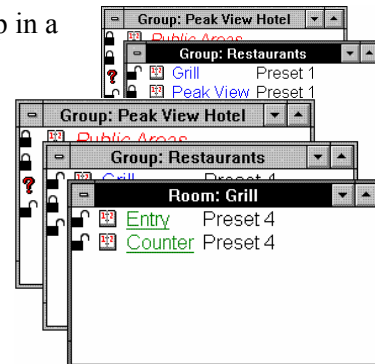


Group Window Components

The  in front of the third entry shows that the locking status is different for different rooms in the group. A preset name of "---" shows that different rooms in the group are set to different presets.

Double-click a group name to open the group in a new Status window.

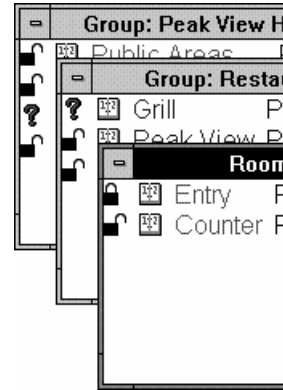
Double-click a room name to open the room in a new Status window.



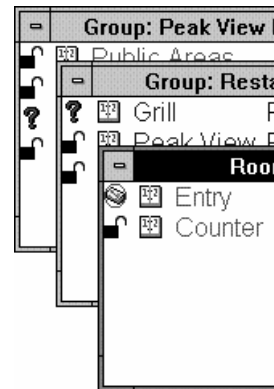
Locking and Unlocking Stations

Stations can be locked, unlocked, or record locked. When locked, none of the controls on the station work. When unlocked, all of the controls work. When record locked, the station lets you play back presets and set light levels, but does not let you change recorded information such as preset levels.

Double-click a lock icon to unlock the selected station. The lock icon in front of groups with this station changes to a question mark, since the group has stations with different lock status.





Double-click the lock icon again to record lock the selected station. The icon changes to (the "No Record" icon). The higher level groups still have stations with different lock status, so the ? icons remain in these groups.



Changing the lock status for a group or room changes the lock status for all stations in the group or room. This lets you change the lock status for multiple stations by changing the lock status of one Status group item. You can lock out a station, a room, a group, or a group of groups as required.

Lock status can be set to any one of the following:

- | | | | |
|---|------------|---|-----------------|
|  | (Locked) |  | (Record Locked) |
|  | (Unlocked) |  | (mixed) |

Premiere Network Manager tracks all locking status changes. If you change the lock status of a control station from the station, Premiere Network Manager will update its display status.

Link Groups

Premiere Network Manager lets you create groups to restrict the rooms that can be linked together. These groups are called Link groups. Since link groups are available through the Room Link icon in the toolbar, you do not need to include these groups in any other group or in the top group.

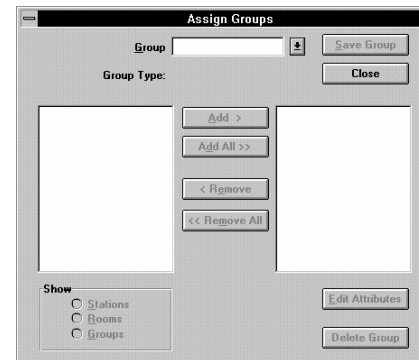
Organizing Link Groups

Since the purpose of Link groups is to restrict room linking to rooms that can actually be linked, the number of link groups and the rooms in them is determined by the layout of rooms and how they are configured in the Processor Configuration files. Each link group should contain only adjacent rooms that can actually be linked together.

Premiere Network Manager can only link rooms that are on the same Premiere Processor. It does not track room combinations made from local control points.

Creating Link Groups Create Link groups using the *Assign Groups* dialog box.

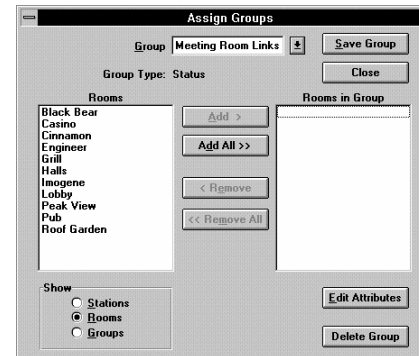
Choose *Groups* from the *Edit* menu to open the *Assign Groups* dialog box.



Type the name of the new group in the **Group** box.

Press **Enter**. You will be asked if you want to create a new group.

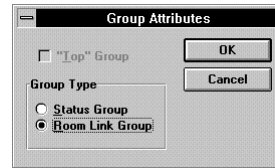
Click **OK** to create a new group. The left hand list shows rooms.



Click **Attributes** to open the *Group Attributes* dialog box.

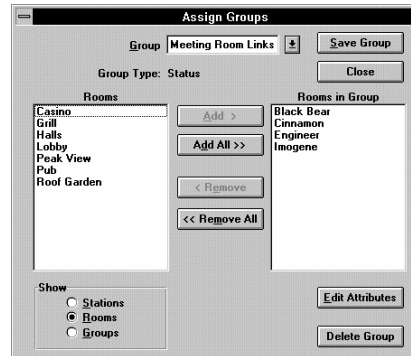
Click the **Room Link Group** option button.

Click **OK** to save the Link group status and close the *Group Attributes* dialog box.



Select the room or rooms from the left hand list box that you want to place in this group.

Click **Add** to add the room to the right hand list box.



You can also double-click on a room to move it to the other side.

Add additional room to the right hand list box as required. You can mix groups, rooms, and stations in the same group.

If you attempt to add rooms from different Premiere Processors, you will get an error message.

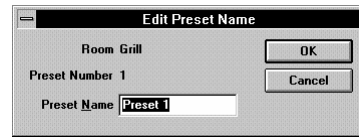
Click **Save Group** to save the new link group.

Click **Close** to close the *Assign Groups* dialog box. You can create or edit additional groups before closing the dialog box if you wish.

Names

Groups, rooms, stations, presets, and channels can all be assigned names. Names for the rooms, stations, presets, and channels may already have been assigned in the Processor Configuration file, but they can be changed. Unnamed entries have a default name. For instance, the default name for preset #1 is "Preset 1." You do not need to name any items except groups, which you must name to create.

Double right-click a group, room, station, preset, or channel name to open the *Edit Name* dialog box for the entry.



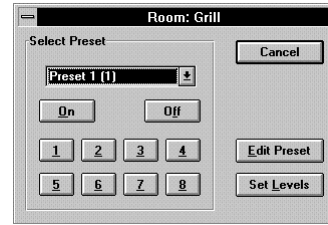
Type a new name and click **OK** to record the change and close the dialog box.

Room and preset names are immediately downloaded to the appropriate Premiere Processor and saved to the copy of the configuration file stored on the PC.

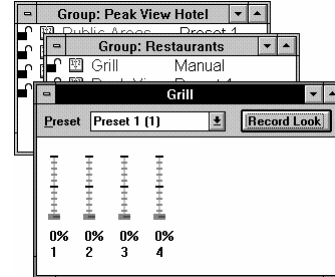
Channel Control

You can directly control channel levels in any room that you can access through the Status groups.

Double-click a preset name to open the *Select Preset* dialog box.



Click **Set Levels** to open a manual level setting window for the group or room. The preset name changes to "Manual" in the Status group window.



Change the levels as needed by moving the appropriate sliders.

This window modifies channel levels live and is the same as using a manual station in the room.

To change one slider



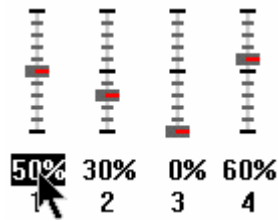
Point to the slider handle and press the left mouse button.

Drag the slider handle until it is at the desired level, and release the mouse button



*You can also use **↑** and **↓** to change the slider level, or type in a level using the number keys.*

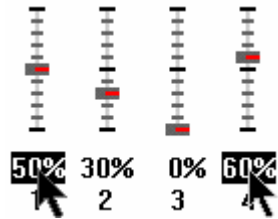
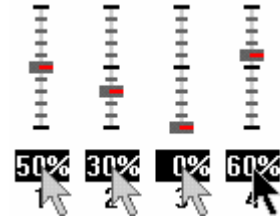
To select more than one slider



Point to the dimmer level and press the left mouse button.

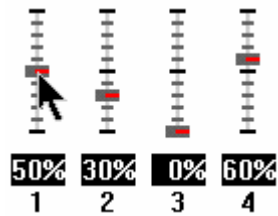
To select only this slider, release the left mouse button. You can then select a different single slider using the arrow keys.

To select multiple sliders, drag the mouse pointer to the last channel you want to control, and release the button.



To select multiple sliders that are not all together, hold **Ctrl** and click on the desired sliders.

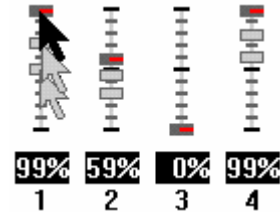
To change a multiple slider selection



Point to the slider handle you want to be the master and press the left mouse button.

Drag the slider handle to the desired level and release the button.

All other non-zero channels will move proportionally (i.e., if you double the level on the "master," all other levels will also be doubled).



*You can also use **Alt** and **Up** to master selected channels with the highest level channel as the master, or use the number keys to type a new level for all of the selected channels.*

To record your changes in a preset

To record the changes in a preset, select the preset using the **Preset** drop down list box and click **Record Look**.

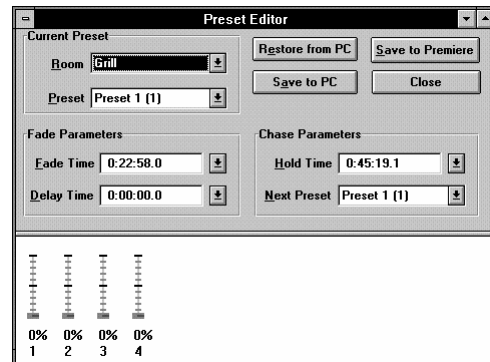
Presets

Presets let you record lighting levels for later recall. From the Premiere Network Manager, they can be activated "manually," through timed events, or through macros. There are 128 presets per room in each Premiere Processor. This means that you have a total of 4098 presets in each Premiere Processor (128 presets x 32 rooms = 4098). You do not "create" presets in Premiere Processors like you do in many stage lighting systems. You just record new levels for the existing 128 presets as needed.

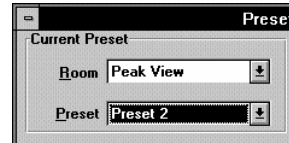
Preset pushbutton stations can typically access the first 8 or 16 presets plus On and Off, unless additional presets are set up in a template for the station. You can easily create a set of public access presets for a room, accessible from the pushbutton stations, and a set of restricted access presets that are only available from the Premiere Network Manager.

Recording Presets Record or change presets using the Preset Editor. Preset editing from this window is blind. Lights do not change while you are adjusting them. Even if you are recording the currently selected preset you need to select it again after recording to change the lights in the room.

Choose *Presets* from the *Edit* menu to open the *Preset Editor* window.



Use the **Room** and **Preset** drop down lists to choose the preset you want to edit and record. Level and fade time information for the selected preset is retrieved from the Premiere Processor.



*You can also open the Preset Editor for a preset by double-clicking on the preset name in a Status group and then clicking on **Edit Preset** in the dialog box that appears.*

Change the **Fade Parameters** and **Chase Parameters** as needed.

Fade Time is the programmed time for fading from one set of light levels to another. You can set the fade time for each preset to a value between 0.1 seconds to 9 hours (inclusive). Fade times between 0.1 seconds and 30 minutes can be set in 0.1 second increments. Fade times between 30 minutes and 9 hours can be set in 1 minute increments.

Delay Time is the elapsed time between selecting a preset to the beginning of the preset fade. You can set the delay time for each preset to a value between 0.1 seconds and 9 hours (inclusive). Delay times between 0.1 seconds and 30 minutes can be set in 0.1 second increments. Delay times between 30 minutes and 9 hours can be set in 1 minute increments.

Hold Time is the programmed time that presets wait after completion before moving automatically to the next preset. You can set the hold time for each preset to a value between 0.1 seconds and 9 hours (inclusive). Hold times between 0.1 seconds and 30 minutes can be set in 0.1 second increments. Hold times between 30 minutes and 9 hours can be set in 1 minute increments. You can use hold time to program a series of automatic fades or loops. A hold time of ZERO (no hold) prevents the next preset from being automatically started.

To activate hold times from a Premiere control station, select the first cue in a sequence or loop twice. To activate hold times from the Premiere Network Manager, activate a macro in the Premiere Processor that selects the starting cue twice. This macro must be programmed using the Premiere Configuration Software. Selecting cues twice from the Premiere Network Manager has no effect.

Next Preset is the preset that will be selected after the programmed hold time. The default for the next preset is the next whole number larger than the current preset number. By programming a cue to point "back" to a previous cue (e.g., cue 6 points to cue 1) you can create a loop.

Change the levels as needed by moving the appropriate sliders.

Click Save to Premiere to send the new preset information to the Premiere Processor(s). This does not save preset data to the Premiere Configuration file on your PC. If this is a temporary setting, you can later restore the values from the Premiere Configuration file on your PC by using **Restore from PC** and then saving the values to the Premiere Processor.

Click Save to PC to save the new preset information to the Premiere Configuration file on your PC. This does not send preset data to the Premiere Processor.

Previewing Presets Even if you do not have preview editing privileges, you can see the settings for a preset by opening the preset in the preset editor. The preset editor will let you select new presets, but will not let you change anything for the presets.

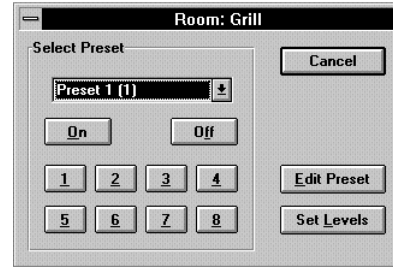
Selecting Presets Once you have recorded presets, the easiest way to change light levels in a room is to select a new preset for the room. You can do this manually as shown here, or you can do it through a programmed event or by running a macro as shown later in this chapter.

Open the Status group that contains the group or room for which you want to change the preset.



Double-click the preset number next to the group or room you want to change.

Click **On**, **Off**, or the appropriate preset button to select a standard Premiere station preset, or choose any of the 128 allowed presets from the drop down list box.



You can also select presets by choosing Select Preset from the Tools menu and using the drop down list boxes to select the preset you want.

Events

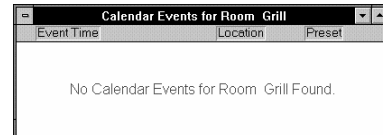
Events let you automatically select a Premiere preset, lock or unlock stations, or run a Premiere Network Manager macro at a specific time and date. You can create one time events by specifying an exact time and date, or repetitive events by specifying a time and a day of the week. Each Premiere system can have up to 600 events.

Events are stored only in the Premiere Configuration files on the PC. To download the event information to the Premiere Processors, use "Load Events" from the *Configure* submenu of the *File* menu.

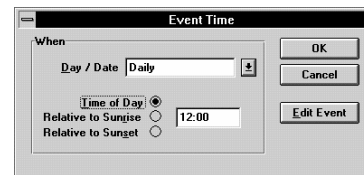
Open the Status group that contains the group, room, or station for which you want to change the event.



Double-click the calendar icon next to the group, room, or station you want to change. Since there are no events for this item yet, the event window is blank. The event window shows all events for the currently selected object (in this case the Grill) and all objects below it (in this case the individual stations in the grill). When you create an event for an object, the event also applies to all objects below the currently selected object.



Choose New Event from the Edit menu or double-click in the Event window to open the Event Time dialog box.



Type a specific date for the event in the **Day/Date** box, or select an option from the **Day/Date** drop down list. The list presents the following choices:

- Sundays
- Mondays
- Tuesdays
- Wednesdays
- Thursdays
- Saturdays
- Weekdays
- Weekends
- Mon-Sat
- Daily

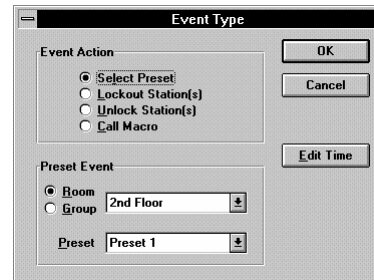
- Fridays

Check the appropriate Time of Day option.

Time of Day	Sets the time value as a time of day.
Relative to Sunrise	Sets the time value as an offset from sunrise.
Relative to Sunset	Sets the time value as an offset from sunset.

Type the time of day or offset from sunrise or sunset here. Times are shown in 24 hour (hh:mm) format. Time offsets can be up to 1 hour and 59 minutes (inclusive) before or after sunrise or sunset as automatically calculated by the Premiere Processor for the day in question. "Before" values are negative (e.g. -1:59) and "After" values are positive (e.g. 1:59).

Click **OK** to save the event time and open the *Event Type* dialog box.



Choose the appropriate Event Action option button.

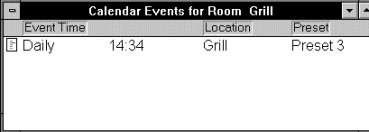
Select Preset	Makes this an event that will activate a preset.
Lockout Station(s)	Makes this an event that will lock stations.
Unlock Station(s)	Makes this an event that will unlock stations.
Call Macro	Makes this an event that will trigger a Premiere Network Manager macro.

For Preset Events:

Choose the appropriate **Preset Event** option button (group or room). Then select the group or room from the drop down list box.

Select the preset that is activated by this event.

Click **OK** or press to record the event and close the dialog box.



Event Time	Location	Preset	
Daily	14:34	Grill	Preset 3

Click **Cancel** or press to discard the event and close the dialog box.

For Lockout and Unlock Events:

Choose the appropriate **Lockout Event** or **Unlock Event** option button (group, room, or station). Then select the group, room, or station from the drop down list box.

Click **OK** or press to record the event and close the dialog box.

Click **Cancel** or press to discard the event and close the dialog box.

For Macro Events:

Select the macro that is started by this event.

Click **Description** to open the *Macro Description* dialog box if you want to create or edit a description for the macro.

Click **OK** or press to record the event and close the dialog box.

Click **Cancel** or press to discard the event and close the dialog box.

Macros

In the Premiere Processor, macros are sequences of commands that can be recorded and played back automatically from the time clock or manually by pressing a single button assigned as the starting command. You can have up to 800 macro steps per processor, split between as many or as few macros as you want. To record macros you must have macro editing privileges.

Recording a Macro Premiere Network Manager macros are a collection of Premiere Processor macro numbers (one number for each processor) with a name. When you start a Premiere Network Manager macro, it sends a message to each of the Premiere Processors to start the specified macro number. For a macro in Premiere Network Manager to do anything, it must already be defined in the Premiere Configuration file.

Choose *Macros* from the *Edit* menu. The *Macro Editor* dialog box appears.

Type a macro name and press **Enter**. You will be asked if you want to create the macro.

Click **OK** to create the macro. Processors currently assigned in this Premiere Network Manager file appear in black text, while unassigned processors are grayed out.

Type the Premiere Processor macro number you want this macro to start next to each of the processor numbers. You can start a different macro number for each processor. To start no macro in a particular processor, leave the macro number set to 0 (zero).

The screenshot shows the 'Macro Editor' dialog box. At the top, there is a 'Macro Name' field containing 'Emergency'. Below it, a table titled 'Macros Called' has two columns: 'Processor' and 'Macro #'. The 'Processor' column lists numbers 1 through 8. The 'Macro #' column has input boxes for each processor, all containing '0'. To the right of the table are buttons for 'Save Macro', 'Close', 'Delete Macro', and 'Description'. At the bottom, a note reads: 'Enter a Macro #, or zero if no macros are to be called from a processor.'

This screenshot shows the 'Macro Editor' dialog box after some macro numbers have been assigned. The 'Macro Name' field still contains 'Emergency'. In the 'Macros Called' table, the 'Macro #' boxes for processors 2 and 3 now contain '123' and '22' respectively, while all other boxes remain '0'. The buttons and note at the bottom are the same as in the previous screenshot.

Click **Description** to open the *Macro Description* dialog box.

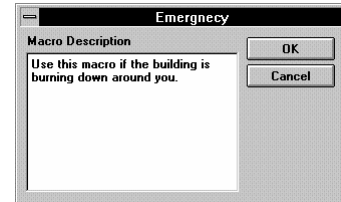
Type a description for the new macro.

Click **OK** to save the new description.

Click **Cancel** to close the dialog box without changing the description.

Click **Save Macro** to save the new macro definition. You can create additional macros before closing the dialog box if you wish.

Click **Close** to close the *Macro Editor* dialog box.



Running a Macro To run a macro, use the *Run Macro* command in the *Tools* menu.

Choose *Run Macro* from the *Tools* menu.

Choose the macro you want to run from the **Macro** drop down list box.

Click **Description** to see the description of the selected macro, or edit the description.

Click **OK** to close the dialog box and run the macro.

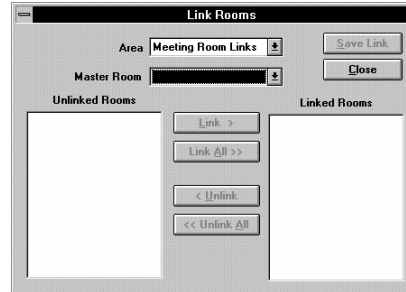
Click **Cancel** to close the dialog box without running a macro.

Room Links

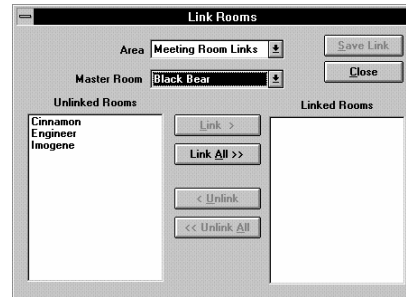
Room links let you combine control for rooms when the rooms are combined by opening partitions between them. In order for rooms to be linked, there must be an appropriate room link group set up for the rooms that you want to link.

Choose *Link Rooms* from the *Tools* menu to open the *Link Rooms* dialog box.

Choose the room link group from the **Area** drop down list box that contains the rooms that you want to link.



Choose the master room from the **Master Room** drop down list. Generally, this should be the room with the largest number of channels. Unless otherwise modified in the Premiere Configuration software, all rooms linked to the master room will use its preset levels. The other rooms in the selected area will appear in the **Unlinked Rooms** list box.



Select the room or rooms from the **Unlinked Rooms** list box that you want to link.

Click Link to link the rooms and move their names to the **Linked Rooms** list box.

*You can also double-click on a room name to add it to the **Linked Rooms** list box, or click **Link All** to link all of the rooms.*

Click Save Link to save the room links. You can set up additional room links before closing the *Link Rooms* dialog box if you wish.

*If you wish to change the master room for an area, you must first unlink all of the rooms and click **Save Link**, then choose the new master room and relink the rooms as needed.*

Click Close to close the *Link Rooms* dialog box.

The Toolbar

The toolbar is displayed across the top of the application window, below the menu bar. It provides quick mouse access to many tools used in Premiere Network Manager.

To hide or display the Toolbar


From the *View* menu, choose *Toolbar*, or press .

Toolbar buttons



The **Select Presets** button opens the *Select Presets* dialog box, from which you can activate any preset in any group or room.




To create or edit presets, click  (the **Preset Editor** button) or choose *Presets* from the *Edit* menu to open the *Preset Editor* window.



The **Preset Editor** button opens the *Preset Editor* window, which lets you edit preset data for any preset on the network.



To select a new preset for a room, click  (the **Select Presets** button) or choose *Select Presets* from the *Tools* menu to open the *Select Presets* dialog box.



The **Top Group** button brings the "top" *Group Status* window to the top of the window pile. If this window is not open, it is opened and put on the window list.



The **Event Editor** button opens the *Event Editor* window, which lets you set up or edit events for any station, room, or group on the network.



The **Link Rooms** button opens the Room Link dialog box, which lets you control how rooms are linked together.



The **Run Macro** button opens the Run Macro dialog box, which lets you run macros. To create or edit macros, choose *Macros* from the *Edit* menu to open the *Edit Macros* dialog box.



The **Help** button opens the Premiere Network Manager on-line help file to its introduction page, and opens the contents window for the help file.

Printing

Once you have set up the Premiere Network Manager as required, and have saved it to disk, you will probably want to print all or part of the information so that you can easily refer to it as necessary, or distribute it to the people actually using the system.

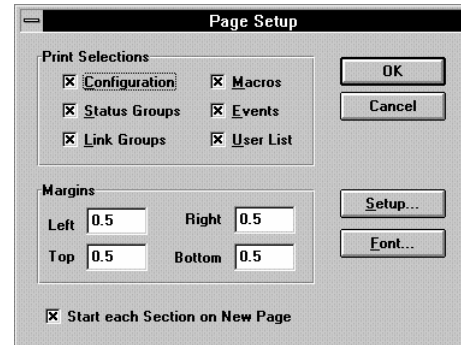
Setting Up the Page Format

The first time you print Premiere Network Manager information, you should make sure that the page setup information is correct. For subsequent printings, you can skip page setup unless there is something you want to change.

Choose *Page Setup* from the *File* menu to open the *Page Setup* dialog box.

Check the items you want to print.

Type new margin settings if necessary. For most situations, the default settings should work well.



Click **Setup** if you need to change your printer, the page orientation, or the page size. This opens the standard Windows *Print Setup* dialog box. Click **OK** when you are finished with changes in this dialog box.

Click **Font** if you want to print the report using a different font. This opens the standard Windows *Font* dialog box. The default font is Arial 12 point normal. The title will print in the bold version of the font you choose. Click **OK** when you are finished with changes in this dialog box.

Click **OK** to save your page setup and close the *Page Setup* dialog box.

Previewing the Report You can preview the Premiere Network Manager printout to see if the format and layout are correct.

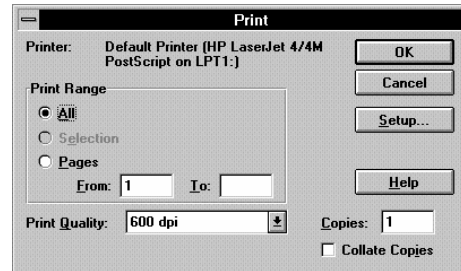
Choose *Print Preview* from the *File* menu to preview the printout. This displays a reduced size image of the report on the monitor, and lets you page through it to see if it will print correctly.

Click **Close** to return to the Premiere Network Manager.

Printing the Report Once you have the page setup correct, printing from Premiere Network Manager is the same as printing from any other standard Windows program.

Choose *Print* from the *File* menu to open the Windows *Print* dialog box.

Click **Setup** if you need to change your printer, the page orientation, or the page size. This opens the standard Windows *Print Setup* dialog box. Click **OK** when you are finished with changes in this dialog box.



Select the **All** option button, or type in the specific pages of the report that you want to print.

Select the print quality if your printer offers this option and the currently displayed entry is not correct for this printing.


Enter the number of copies you want to print.


Check **Collate Copies** if you want multiple copies collated. If this is not checked, each page will print the number of times you specified before the next page starts to print. Multiple copies will print faster if **Collate Copies** is off, but you will have to collate the copies by hand after they are printed.


Click **OK** or press **Enter** to print the selected items.

Click **Cancel** or press **Esc** to close the dialog box without printing.

Getting Help

You can get help through the toolbar, by pressing , or by accessing the *Help* menu.

Press  to get help about the dialog box or window that is currently on top.

Click  or choose *Contents* from the *Help* menu to open the help system with its collapsible contents open.

Choose *Search for Help On...* from the *Help* menu to open the search dialog box for the help system and search for a specific word or topic.

Choose *How To* from the *Help* menu to open the cue card system, which gives you step by step directions for tasks you may wish to perform. Cue cards will stay on top of the Premiere Network Manager window so that you can see them while proceeding with the task.

Choose *Using Help* from the *Help* menu to find out how to use Windows help.

This chapter provides a detailed description of the menus, screens, and dialog boxes. Page numbers are shown below.

About Box	68
Add Config File Dialog Box	69
Assign Groups Dialog Box	69
Astronomical Parameters Dialog Box	71
Communications Parameters Dialog Box	72
Communications Statistics Window	72
Configuration File Selection Dialog Box	73
Date & Time Dialog Box	74
Display Options Dialog Box	75
Edit Channel Name Dialog Box	77
Edit Group Name Dialog Box	78
Edit Preset Name Dialog Box	78
Edit Room Name Dialog Box	79
Edit Station Name Dialog Box	80
Edit Menu Commands	81
Event Editor Window	82
Event Time Dialog Box	84
Event Type Dialog Box	86
File Menu Commands	88
File Open Dialog Box	89
File Save As Dialog Box	90
Files	91
Fonts Dialog Box	93
Group Attributes Dialog Box	94
Help Menu Commands	95
Link Rooms Dialog Box	96
Login Dialog Box	97
Login Menu Commands	98
Macro Description Dialog Box	99
Macro Editor Dialog Box	100
Manual Level Control Window	101
Menu Bar	102
Page Setup Dialog Box	102
Preset Copy Dialog Box	103
Preset Editor Window	104
Print Dialog Box	106
Print Setup Dialog Box	107
Run Macro Dialog Box	108
Select Presets Dialog Box (#1)	109
Select Presets Dialog Box (#2)	110
Status Bar	111
Status Window	112
Title Bar	114
Toolbar	115
Tools Menu Commands	116
User Privileges Dialog Box	116
View Menu Commands	118
Window Menu Commands	119

About Box

The *About* box tells you the version and serial number of your Premiere Network Manager software.



The "Demo Only" indication appears only if you do not have the software key installed. When running in Demo Only mode, the software will not communicate with Premiere Processors, but all other functions will be fully accessible.

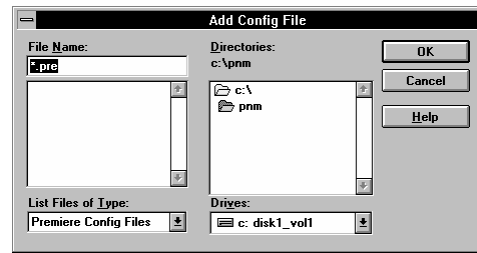
To open this dialog box

From the *Help* menu choose *About*, or press .

Click **OK** or press to close the *About* box.

Add Config File Dialog Box

The *Add Config File* dialog box lets you add a configuration file to the **Processor Configuration File** list in the **Configuration File Selection** dialog box.



To open this dialog box

From the *File* menu, choose *Open*.

Dialog box controls

File Name Type or select the file name you want to open. This box lists files with the extension you select in the **List Files of Type** box.

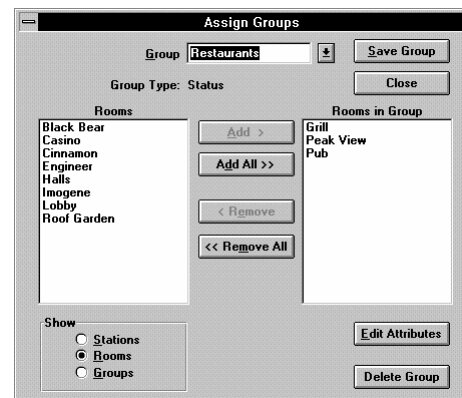
List Files of Type Select the file type you want to open. You can only see Premiere Configuration files (files with a PRE extension) in this dialog box.

Drives Select the drive in which Premiere Network Manager stores the file that you want to open.

Directories Select the directory in which Premiere Network Manager stores the file that you want to open.

Assign Groups Dialog Box

The *Assign Groups* dialog box lets you assign groups, rooms, or stations to groups.



To open this dialog box

From the *Edit* menu, choose *Groups*, or press .

Dialog box controls

Group drop down list box Lets you type in a new group name or select an existing group to edit. To create a new group, type a name in the Group text box and press .

Master list The Master list (the large list box on the left) shows a list of all available items. The Show options buttons below the list determine what type of items appear in the list.

Group Contents list The Group Contents list (the large list box on the right) shows the items of the currently selected type which are currently assigned to the selected group.

Show options These buttons determine what type of items appear in the Master and Group Contents lists.

Stations Show only stations in the lists.

Rooms Show only rooms in the lists.

Groups Show only groups in the lists.

Add >

Moves the selected items from the Master list to the Group Contents list.

Add All >>

Moves all items from the Master list to the Group Contents list.

< Remove

Moves the selected items from the Group Contents list to the Master list.

<< Remove All

Moves all items from the Group Contents list to the Master list.

Edit Attributes

Opens the *Group Attributes* dialog box to let you edit group attributes.

Delete Group

Deletes the group currently selected in the **Group** drop down list box.

Save Group

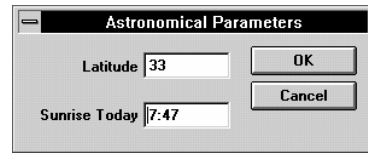
Saves the changes you have made to a group.

Close

Closes the dialog box without saving changes.

Astronomical Parameters Dialog Box

The *Astronomical Parameters* dialog box lets you set the latitude for your facility, and today's sunrise time. From this information, the Premiere Network Manager astronomical clock will calculate future sunrise and sunset times.



To open this dialog box

From the *File* menu, choose *Configure*, or press **C**. Then choose *Astronomical* from the submenu, or press **A**.

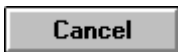
Dialog box controls

Latitude Type the latitude of your facility here. Use positive values for northern latitudes and negative values for southern latitudes. For latitudes above 64 degrees North, use 64 degrees. For latitudes below 64 degrees South, use -64 degrees.

Sunrise Time Type today's sunrise time at your facility here. Use 24 hour, hh:mm format for time.



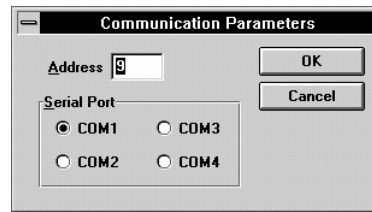
Saves the current latitude and sunrise time and closes the dialog box.





Closes the dialog box without saving the current latitude and sunrise time.

Communications Parameters Dialog Box

The *Communications Parameters* dialog box lets you select the communications port the PC uses for communications with the Premiere network, and a unique LAN ID or address for this Network Manager PC. The LAN address for this PC can be any number from 1 to 16 (inclusive) that is not in use by another device on the LAN.



To open this dialog box

From the *File* menu, choose *Configure*, or press . Then choose *Communications* from the submenu, or press .

Dialog box controls

Address Type the LAN address for this Premiere Network Manager PC here. All Premiere Network Manager PCs and Premiere Processors on the LAN must be assigned a unique address. Any device can have any address if it is not used by another device.

Serial Port Choose one of the Serial Port option buttons to select the port from which the Premiere Network Manager software will communicate.



Saves the current communication settings and closes the dialog box.



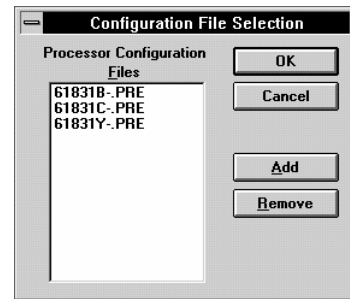
Closes the dialog box without saving the current communication settings.

Communications Statistics Window

The *Communications Statistics* window lets you monitor the current status of communications between the Premiere Network Manager and the Premiere Processors. The information in this window is of a technical nature and is not normally needed by the system's user. If you have problems with your system, you may be asked to look at this window by Field Service personnel.

Configuration File Selection Dialog Box

The *Configuration File Selection* dialog box lets you choose which Premiere Processors you are going to be controlling with the current Premiere Network Manager file. Configuration files for the processors you wish to control must be on a hard disk in the Premiere Network Manager PC.



To open this dialog box

From the *File* menu, choose *Configure*, or press **C**. Then choose *Select Processors* from the submenu, or press **S**.

Dialog box controls

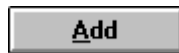
Processor Configuration Files Shows the processors currently in use by the Premiere Network Manager, and their associated processor numbers). Use this multiple selection list to select files to remove.



Saves the current configuration file list and closes the dialog box.



Closes the dialog box without saving the current configuration file list.



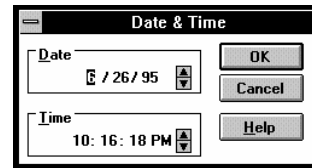
Lets you add a configuration file to the list. A file selection dialog box appears to let you select a new file.



Remove the highlighted files from the Processor Configuration Files list.

Date & Time Dialog Box

The *Set Time* command uses the Windows Control Panel Date & Time applet to let you set the time for your PC.



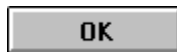
To open this dialog box

From the *File* menu, choose *Configure*, or press **C**. Then choose *Set Time* from the submenu, or press **S**.

Dialog box controls

Date Set the date by highlighting the month, day, and year fields individually and typing a new value or using the spin button to change it.

Time Set the time by highlighting the hours, minutes, seconds, and AM/PM fields individually and typing a new value or using the spin button to change it.



Saves the new time setting and closes the dialog box.



Closes the dialog box without changing the time.

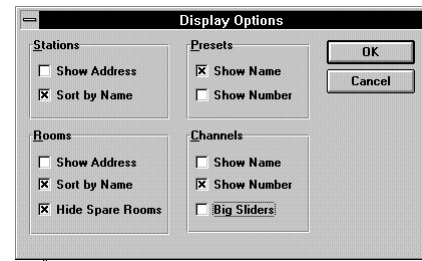


Opens this help topic for the Time/Date function in the control panel.

*To synchronize the Premiere Processor timers to the date and time in the PC, choose **Configure** from the **File** menu and then choose **Synchronize Time**.*

Display Options Dialog Box

The *Display Options* dialog box lets you select how information is displayed in the status windows and the Preset Editor.



To open this dialog box

From the *View* menu, choose *Options*, or press .

Dialog box controls

Stations Check the **Show Address** box to show the station numeric address (processor number, LAN, and address) whenever stations are displayed. The address becomes the first part of the station name. These numeric addresses are important while you are configuring the system, but are seldom useful during normal operation.

Check the **Sort by Name** box to sort stations by station name wherever they appear.

Rooms Check the **Show Address** box to show the room numeric address (processor and room number) whenever rooms are displayed. The address becomes the first part of the room name. Numeric room addresses are needed when configuring the Premiere Network Manager initially, but are seldom desirable during normal operation.

Check the **Sort by Name** box to sort rooms by room name wherever they appear.

Check the **Hide Spare Rooms** box to suppress the display of rooms are named "Spare".

Presets Check the **Show Name** box to show preset names in status windows. For groups, the preset "name" will show up as "Preset ###," except for the on and off presets.

Check the **Show Number** box to show preset numbers in status windows.

Check both boxes to see preset names followed by the number in parenthesis (e.g., "Morning (1)" for a preset #1 named "Morning")

Uncheck both boxes if you do not want to see preset information in the status window.

Channels Check the **Show Name** box to show channel names in the Preset Editor and in *Manual Level Control* windows.

Check the **Show Number** box to show channel numbers in the Preset Editor and in *Manual Level Control* windows.

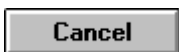
Check both boxes to see the channel name followed by the number in parenthesis (e.g., "Chandeliers (1)" for a channel #1 named "Chandeliers").

If you uncheck both boxes, channel numbers will be shown.

Check the **Big Sliders** box for larger sliders. These sliders give you 1% resolution control over channel levels, but fewer sliders will fit on your screen.



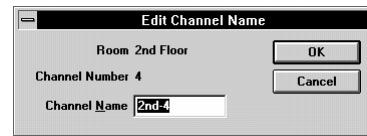
Saves the changes you have made to display options and closes the dialog box.



Closes the dialog box without saving changes.

Edit Channel Name Dialog Box

The *Edit Channel Name* dialog box lets you edit any channel name on the network. The new name is recorded back into the appropriate Premiere Processor as well as in the appropriate configuration file on the local computer's disk.



If you have not named a channel, the channel name is "Channel" plus the channel number.

To open this dialog box

In the *Preset Editor* window, double right-click the channel name below the slider that you want to change. **Channels Show Names** must be checked in the *View Options* dialog box for you to see channel names in the in the *Preset Editor* and *Manual Level Control* windows.

Dialog box controls

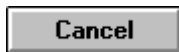
Room Shows the room to which this channel belongs (not editable).

Channel Number Shows the channel number (not editable).

Channel Name Type the new channel name here.



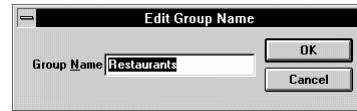
Saves the new name and closes the dialog box.



Closes the dialog box without saving the new name.

Edit Group Name Dialog Box

The *Edit Group Name* dialog box lets you change any group name on the network.



To open this dialog box

In a Status window, double right-click the group name you want to change.

Dialog box controls

Group Name Type the new group name here.



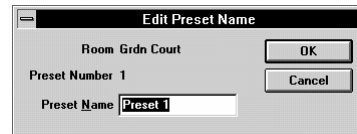
Saves the new name and closes the dialog box.



Closes the dialog box without saving the new name.

Edit Preset Name Dialog Box

The *Edit Preset Name* dialog box lets you edit any preset name on the network. The new name is recorded back into the Premiere Processor and the configuration file on your PC.



Since you can only access preset names from Status windows, you can only edit the preset name for the currently active preset in a room.

If you have not named a preset, the preset name is "Preset" plus the preset number.

To open this dialog box

In a Status window, double right-click the preset name you want to change. You cannot edit a preset name for a group, since this would change the preset name in all rooms associated with the group.

Presets Show Names must be checked in the *View Options* dialog box for you to see preset names in Status windows.

Dialog box controls

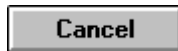
Room Shows the room to which this preset belongs (not editable).

Preset Number Shows the preset number (not editable).

Preset Name Type the new preset name here.



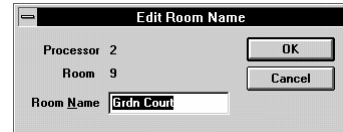
Saves the new name and closes the dialog box.



Closes the dialog box without saving the new name.

Edit Room Name Dialog Box

The *Edit Room Name* dialog box lets you change any room name on the network. The new name is recorded back into the Premiere Processor and the configuration file on your PC.



To open this dialog box

In a Status window, double right-click the room name you want to change.

Dialog box controls

Processor Shows the processor to which the room belongs (not editable).

Room Shows the room number (not editable).

Room Name Type the new room name here.



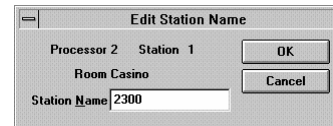
Saves the new name and closes the dialog box.



Closes the dialog box without saving the new name.

Edit Station Name Dialog Box

The *Edit Station Name* dialog box lets you edit any station name on the network.



If you have not named a station, its name is the station catalog number.

To open this dialog box

In a Status window, double right-click the station name you want to change.

Dialog box controls

Processor Shows the processor to which the station belongs (not editable).

Station Shows the station number (not editable).

Room Shows the room to which this station belongs (not editable).

Station Name Type the new station name here.



Saves the new name and closes the dialog box.



Closes the dialog box without saving the new name.

Edit Menu Commands

The *Edit* menu provides access to all of the editing windows and dialog boxes. Depending on the currently active window or dialog box, it also provides additional editing functions.

To open this menu

Choose *Edit* from the Menu Bar or press .

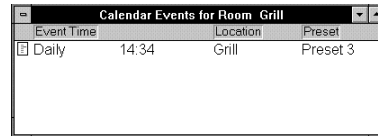
Edit
<u>G</u> roups...
<u>P</u> resets...
<u>E</u> vents...
<u>M</u> acros...
<u>U</u> sers...
<u>L</u> ockout All
<u>U</u> nlock All
<u>R</u> ecord Lock All

Table 1. Edit Menu Commands

Command	Keyboard	Description
The following commands are always available:		
<i>Group Assignments</i>		Opens the Assign Groups dialog box.
<i>Presets</i>		Opens the Preset Editor window.
<i>Events</i>		Opens the Event Editor window.
<i>Macros</i>		Opens the Macro Editor dialog box. To run macros, use the Run Macro button or the Run Macro command in the Tools menu to open the Run Macro dialog box.
<i>Users</i>		Opens the User Privileges dialog box.
When a <i>Status</i> window is active, the following commands appear:		
<i>Lockout All</i>		Disables (locks) all of the stations in the current window.
<i>Unlock All</i>		Enables (unlocks) all of the stations in the current window.
<i>Record Lock All</i>		Disables (locks) the record function for all of the stations in the current window.
When the <i>Preset Editor</i> is active, the following commands appear:		
<i>Select All</i>		Selects all of the channels in the preset for modification.
<i>Set Channels</i>		Sets selected channels to 99% (FULL).
<i>Clear Channels</i>		Sets selected channels to 0% (OFF).
<i>Copy To</i>		Opens the Preset Copy dialog box and lets you copy information from the preset in the Preset Editor into another preset.
<i>Copy From</i>		Opens the Preset Copy dialog box and lets you copy preset information from another preset into the preset in the Preset Editor.
When a <i>Manual Control</i> window is active, the following commands appear:		
<i>Select All</i>		Selects all of the channels in the room for modification.
<i>Set Channels</i>		Sets selected channels to 99% (FULL).
<i>Clear Channels</i>		Sets selected channels to 0% (OFF).
When the <i>Event Editor</i> is active, the following commands appear:		
<i>New Event</i>		Creates a new event and opens the Event Time dialog box.
<i>Delete Event</i>		Deletes the currently selected event.

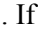
Event Editor Window

The *Event Editor* window shows you the currently defined events. It lets you access the *Event Time* dialog box and the *Event Type* dialog box to set up new events or edit existing events. Once it has been opened you can keep it open while doing other things.



Calendar Events for Room Grill		
Event Time	Location	Preset
Daily	Grill	Preset 3

To see this window, click 

Or from the *Edit* menu, choose *Events*, or press . If the *Event Editor* is already open, you can also select it from the *Window* menu or click on any portion of the window to bring it to the top.

To open the Event Time dialog box for a new event

From the Edit menu, choose New Event.

To open the Event Time dialog box to edit an event

Double-click the Event Time for the event you want to edit.

To open the Event Type dialog box to edit an event

Double-click the Location or Preset for the event you want to edit.

Event Type

The icon to the left of the event time shows the type of event. Double-click on the icon to open the Event Type dialog box. Events can be one of four types:



(Select Preset)--Activates a preset in the room or group to which it applies



Unlock Station--unlocks the stations to which it applies



Lockout Station--locks the stations to which it applies



Run Macro--runs a macro

Event Time

Shows the date and time for the event. Double-click on the event time entry to open the Event Time dialog box.

Location

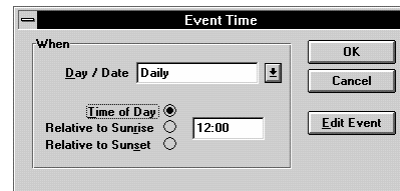
Shows the group, room, or station to which the event applies. Double-click on the location entry to open the Event Type dialog box.

Preset

Shows the preset that this event will activate. Double-click on the preset entry to open the Event Type dialog box.

Event Time Dialog Box

The *Event Time* dialog box lets you edit the event time for the event currently selected in the *Event Editor* window.



To open this dialog box for editing an existing event

In the *Event Editor* window, double-click the Event Time for the event you want to edit, or in the *Event Type* dialog box, click **Edit Time**.

To open this dialog box to define a new event

With the *Event Editor* window active, choose *New Event* from the *Edit* menu.

Dialog box controls

Day/Date Lets you type in a specific date or select the day or combination of days on which the event will repeat. The list includes the following entries.

- Sundays
- Mondays
- Tuesdays
- Wednesdays
- Thursdays
- Fridays
- Saturdays
- Weekdays
- Weekends
- Mon-Sat
- Daily

Time options

Time of Day

Sets the time value as a time of day.

Relative to Sunrise

Sets the time value as an offset from sunrise.

Relative to Sunset

Sets the time value as an offset from sunset.

Time entry text box Type the time of day or offset from sunrise or sunset here. Times are shown in 24 hour (hh:mm) format. Time offsets can be up to 1 hour and 59 minutes (inclusive) before or after sunrise or sunset as automatically calculated by the Premiere Processor for the day in question. "Before" values are negative (e.g. -1:59) and "After" values are positive (e.g. 1:59).



Saves the current time data and closes the dialog box.



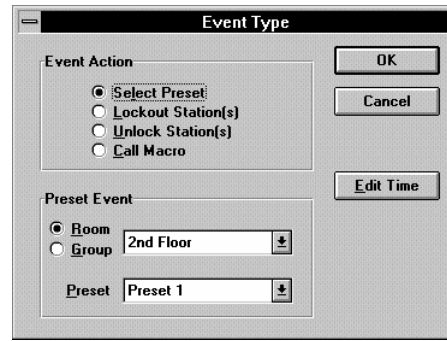
Closes the dialog box without saving the current time data.



Opens the Event Type dialog box.

Event Type Dialog Box

The *Event Type* dialog box lets you edit the event type for the event currently selected in the *Event Editor* window.



To open this dialog box

In the *Event Editor* window, double-click the Location or Preset for the event you want to edit, or in the *Event Time* dialog box, click **Edit Event**.

Dialog box controls

Event Action options The lower selection box will change depending on the selection made in these option buttons.

Select Preset	Makes this an event that will activate a preset.
Lockout Station(s)	Makes this an event that will lock stations.
Unlock Station(s)	Makes this an event that will unlock stations.
Call Macro	Makes this an event that will trigger a Premiere Network Manager macro.

Location options This section changes depending on the selection made in Event Action options. Not all of the choices below are always available.

Station	Makes this an event that will control a station (Lock/Unlock events only).
Room	Makes this an event that will control a room.
Group	Makes this an event that will control a group.

Location selection Except for Macro events, select the location to which the event will apply. For macros, select the macro name.

Preset selection For Preset events only, select the preset that will be activated by the event.



Saves the current preset type information and closes the dialog box.



Closes the dialog box without saving the current preset type information.



Opens the Event Time dialog box.



Opens the Macro Description dialog box. This button appears only if the event is a Macro event.

File Menu Commands

The *File* menu lets you manipulate Premiere Network Manager (.PNM) files.

To open this menu

Choose *File* from the Menu Bar or press .

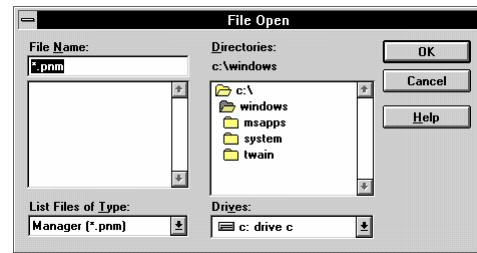
File	
New	Ctrl+N
Open...	Ctrl+O
Save	Ctrl+S
Save As...	
Configure	
Print...	Ctrl+P
Print Preview	
Page Setup...	
Exit	
Select Processors...	
Astronomical...	
Communications...	
Synchronize Time	
Set Time	
Load Events	

Table 2. File Menu Commands

Command	Keyboard	Shortcut	Description
<i>N</i> ew			Creates a new unnamed Network Manager file, opens the Configuration File Selection dialog box, and then opens the Add Config File dialog box so you can begin selecting configuration (.PRE) files.
<i>O</i> pen			Opens the File Open dialog box so that you can select and open an existing Premiere Network Manager (.PNM) file.
<i>S</i> ave			Saves the current Premiere Network Manager file using its current file name. This erases the old version of the file, and creates a new version. The first time you save a file, Premiere Network Manager opens the Save As dialog box so you can select a name and location for the new file.
<i>S</i> ave <i>A</i> s			Opens the Save As dialog box so you can save the current Premiere Network Manager file with a different file name. This leaves the old file intact and creates a new file.
<i>C</i> onfigure			Opens a submenu with the following items:
<i>S</i> elect <i>P</i> rocessors			Opens the Configuration File Selection dialog box and lets you select the configuration files for the Premiere Processors which will be controlled by the current Premiere Network Manager PC.
<i>A</i> stronomical			Opens the Astronomical Parameters dialog box and lets you set the Premiere's astronomical time clock.
<i>C</i> ommunications			Opens the Communications Parameters dialog box and lets you set the COM port and the Premiere Network Manager's network address.
<i>S</i> ynchronize <i>T</i> ime			Synchronizes the time of all Premiere Processors to the PC's time.
<i>S</i> et <i>T</i> ime			Opens the Windows set time applet so that you can set the correct time on your system.
<i>L</i> oad <i>E</i> vents			Erases events from the attached Premiere Processors and loads them with events from the Premiere Network Manager.
<i>P</i> rint			Opens the Print dialog box so you can print a document.
<i>P</i> rint <i>P</i> review			Lets you see on screen what will print with the current settings.
<i>P</i> age <i>S</i> etup			Opens the Page Setup dialog box so you can choose what you want to print and what the page margins will be.
<i>E</i> xit			Exits Premiere Network Manager.

File Open Dialog Box

The *File Open* dialog box that lets you open an existing Premiere Network Manager file.



To open this dialog box

From the *File* menu, choose *Open*, or in the *Configuration File Selection* dialog box click **Add**.

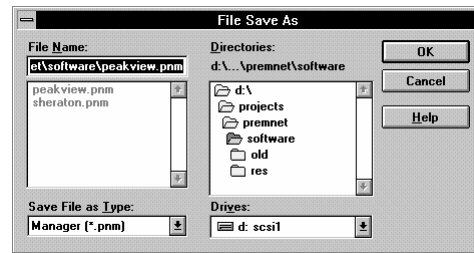
When opened from the *File* menu it lets you select a new Premiere Network Manager file to work on. When opened from the *Configuration File Selection* dialog box it lets you select a new configuration file to add to the list.

Dialog box controls

- File Name** Type or select the file name you want to open. This box lists files with the extension you select in the **List Files of Type** box.
- List Files of Type** Select the file type you want to open. You can select Premiere Network Manager files (files with a PNM extension) or All Files.
- Drives** Select the drive in which Premiere Network Manager stores the file that you want to open.
- Directories** Select the directory in which Premiere Network Manager stores the file that you want to open.

File Save As Dialog Box

The *File Save As* dialog box that lets you specify the name and location of the file you're about to save.



To open this dialog box

Choose *Save As* from the *File* menu or press .

Dialog box controls

File Name Type a new filename to save a file with a different name. A filename can contain up to eight characters and an extension of up to three characters. Premiere Network Manager adds a PNM extension by default. Since the software cannot see files unless they have a PNM extension, you should always use the default.

List Files of Type Select the file type you want to save as.

Drives Select the drive in which you want to store the file.

Directories Select the directory in which you want to store the file.

Files

Before starting the program, you should be aware of the file conventions used by this program.

Premiere Network Manager Files

The Premiere Network Manager file contains all of your group and network macro definitions, font definitions, and pointers to the Premiere Configuration files for the processors in the system. The Premiere Configuration files contain channel, preset, room, and station names, preset and event data, and processor macros.

By default, when you save a file using *Save as* from the *File* menu, the system will suggest the name "DEFAULT1.PNM." If this file already exists in the current directory, it will suggest "DEFAULT2.PNM." Files with this extension are referred to as "Premiere Network Manager files" throughout this manual.

You can save a Premiere Network Manager file with any name, but finding it with the *File Open* dialog box will be much easier if you at least use the "PNM" file extension for all files you are editing or archiving.

Premiere Configuration Files

When you open the *Configuration File Selection* dialog box and select **Add**, only files with a "PRE" file extension will appear in the list box for adding. If your Premiere configuration files were originally saved with an extension other than "PRE" (e.g., FILE1.E3 for loading into the processor) you must rename the files before the Premiere Network Manager will recognize them.

Premiere Disk Files The configuration file that is transferred to the Premiere Processor must be named "FILE1.E3". This file is referred to as the "Premiere disk file" throughout this manual. Generally, you should edit a separate Premiere file and save it as FILE1.E3 only to the floppy disk you will be using to transfer that data to or from the processor.

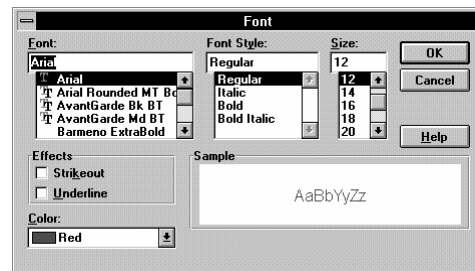
When bringing a configuration file from a processor to your PC, use the Premiere Configuration Software to open the file on the floppy disk and immediately save it with a "PRE" extension and a unique name.

Automatic File Open When you start the Premiere Network Manager software from Windows, it will automatically open the last file you were working on. If it has no record of a last file (i.e., this is the first time you opened the software, or you inadvertently erased the PNM.INI file from your Windows directory) you will get a blank Premiere Network Manager window. If you are using the software for the first time, choose *New* from the *File* menu to start a new file. If PNM.INI was accidentally erased, you can start a new file, or choose *Open* from the *File* menu to open an existing file.

File Errors If you try to open a non-existent file you will get an error message telling you that there was a problem opening the file. When you click on *OK* the Premiere Network Manager starts a new .PNM file.

Fonts Dialog Box

The *Fonts* dialog box lets you change font, style (such as bold and italic), font size, effects (Underline and Strikethrough), and color for the item you selected from the *View Fonts* submenu.



Selecting different fonts, font styles or colors for groups, rooms, and stations makes it easier to distinguish one type of item from another in the various status windows. Your font selections will be saved when you exit the Premiere Network Manager.

Changing the font size for one item (e.g., groups, rooms, etc.) will change the font size for all items. All other font attributes are tracked per item type.

To open this dialog box

From the *View* menu, choose *Fonts*, or press ⌘-F. Then choose one of the items in the *View Fonts* submenu.

Dialog box controls

Font To type or select a font name, use this list. The list shows all fonts installed in your system.

Font Style To select a style, use this list. To use the default type style for a given font, select Regular.

Size To type or select a font size, use this list. The sizes available depend on the selected font. If the size you type is not available Windows chooses the closest available size.

Changing the font size for one item (e.g., groups, rooms, etc.) will change the font size for all items. All other font attributes are tracked per item type.

Underline To underline all characters with a single solid line check this box. Spaces between words will also be underlined

Strikethrough To draws a line through selected text, check this box.

Color To type or select one of the 16 standard colors, use this list

Sample This box shows an example of the selected font.



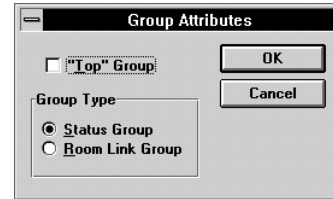
Changes the selected font and closes the dialog box.



Closes the Font dialog box without changing the selected font.

Group Attributes Dialog Box

The *Group Attributes* dialog box lets you set the type of group you will be creating.



To open this dialog box

In the *Assign Groups* dialog box, click **Attributes**.

Dialog box controls

"Top" Group When checked, this box tells the Premiere Network Manager that the current group will be the top group. Only one group can have this box checked.

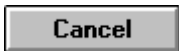
Group Type options

Status Makes this group a status group.

Room Link Makes this group a room link group.



Saves the current group contents and closes the dialog box.



Closes the dialog box without saving the current group contents.

Help Menu Commands

The *Help* menu lets you get help for using the Premiere Network Manager on-line help system.

H elp
C ontents
S earch for Help ON...
H ow to...
U sing Help
A bout...

To open this menu

From the Menu Bar, choose *Help*, or press .

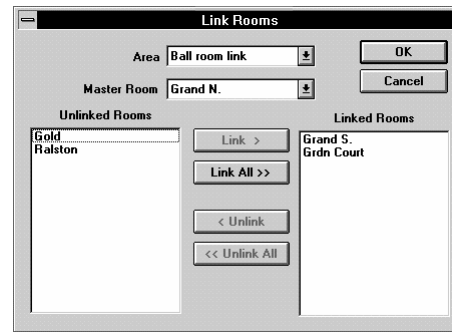
To open the help file directly, click 

Table 3. Edit Menu Commands

Command	Keyboard	Description
<u>C</u> ontents		Opens the Premiere Network Manager help system to the main contents topic.
<u>S</u> earch for Help on		Opens the Search dialog box for the Premiere Network Manager help system. This lets you search for topics by keyword, rather than just the name of the topic.
<u>H</u> ow to		Opens the Premiere Network Manager help system to the How To contents topic.
<u>U</u> sing Help		Provides general instructions on using help.
<u>A</u> bout		Displays the version number and copyright information for this application.

Link Rooms Dialog Box

The *Link Rooms* dialog box lets you link rooms as required for day to day operation. You can only link rooms that have been put into a room link group and that are in the same Premiere Processor.



To open this dialog box, click 

From the *Tools* menu, choose *Link Rooms*, or press

Dialog box controls

Area drop down list box Lets you select a room link group. You must have already set up this group using the Assign Groups dialog box.

Master room Lets you select the master room for this link. Generally this should be the room with the largest number of channels. All rooms linked to the master room will use its preset levels.

Unlinked Rooms list Shows rooms that are not linked to any other room.

Linked Rooms list Shows rooms that are linked to the selected master room.



Links the selected rooms with the master room. The rooms move from the Unlinked Rooms list to the Linked Rooms list.



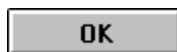
Links all rooms with the master room. All rooms move from the Unlinked Rooms list to the Linked Rooms list.



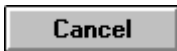
Unlinks the selected rooms. The rooms move from the Linked Rooms list to the Unlinked Rooms list.



Unlinks all rooms. All rooms move from the Linked Rooms list to the Unlinked Rooms list.



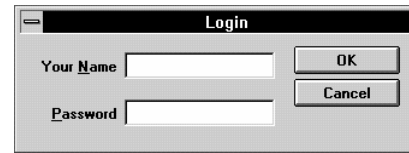
Links the specified rooms and closes the dialog box.



Closes the dialog box without changing any room links.

Login Dialog Box

The *Login* dialog box lets users log in to the Premiere Network Manager. This lets you set up various access levels for the Premiere Network Manager functions if you wish.



To open this dialog box

From the Login menu, choose *Login*, or press .

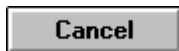
Dialog box controls

Your Name Type your name here.

Password Type your password here. The field will not display the actual characters you are typing.



Closes the dialog box and checks to see if you have entered a valid user and password. If you have, you are logged on with the appropriate user privileges.



Closes the Login dialog box without logging you in as the current user. You will have access to all functions defined for the user "Anyone," or the currently logged-in user.

Login Menu Commands

The *Login* menu lets you log in to or log out from the Premiere Network Manager . You do not need to log on to use the privileges assigned to the "Anybody" entry in the *User Privileges* dialog box.



Logging out automatically logs in the "Anybody" user, who should have reduced user privileges.

To open this menu

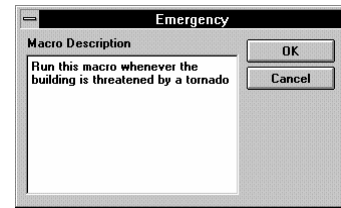
From the Menu Bar, choose *Login*, or press .

Table 4. Login Menu Commands

Command	Keyboard	Description
<i>Login</i>		Opens the Login dialog box so you can enter your name and password.
<i>Logout</i>		Logs you off the system, and logs in the user "Anybody." You must log in again and enter your password to access the system with your own level of access privileges after having used this command.

Macro Description Dialog Box

The *Macro Description* dialog box lets you add a description to a Premiere Network Manager macro, or edit the description. You cannot edit text in this dialog box unless you have macro editing privileges.



To open this dialog box

In the *Macro Editor* or in the *Run Macro* dialog box, click **Description**.

Dialog box controls

Macro Description text box Lets you type in a new macro description or change an existing description.



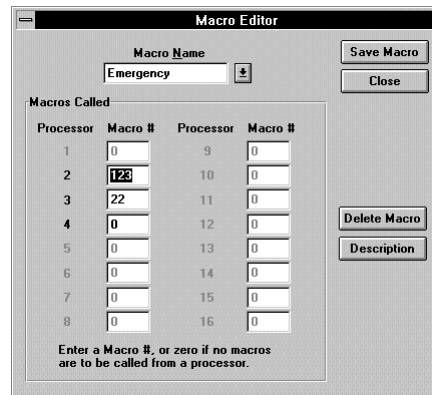
Records the new description and closes the dialog box.



Closes the dialog box without recording the new description.

Macro Editor Dialog Box

The *Macro Editor* dialog box lets you create and edit Premiere Network Manager macros. Premiere Network Manager macros simply list the processor macro that will be started for each processor that is controlled by the Premiere Network Manager software.



To open this dialog box

From the *Edit* menu, choose *Macros*, or press .

Dialog box controls

Macro Name Lets you type in a new macro name or select an existing macro to edit. To create a new macro, type a name in the text portion of the drop down list and press ENTER.

Macros Called Type in the macro number for each processor that you want to be triggered with this Premiere Network Manager macro. The macros that are called must have been previously defined in the processor using the Premiere Configuration Software.

Save Macro

Saves the changes you have made to a macro.

Close

Closes the dialog box without saving changes.

Delete Macro

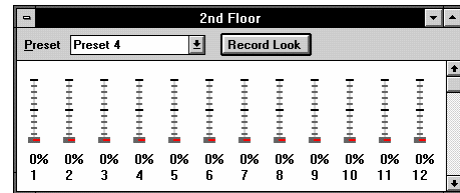
Deletes the macro currently selected in the Macro Name drop down list box.

Description

Opens the Macro Description dialog box.

Manual Level Control Window

The *Manual Level Control* window lets you directly set levels for a selected room. Changes you make appear immediately in the room.



To open this window

In the *Select Presets* dialog box click **Set Levels**. The channel sliders will appear.

Bringing up the manual control window does not change lighting levels. When a change is made to the lighting conditions by changing a slider level or changing the preset, the Premiere Network Manager takes control of all lights assigned to the sliders and changes the lighting levels in the room.

This window closes automatically if a user at another control point takes control of the lights. If the window is active at the time, an advisory dialog box appears. Otherwise the window closes without any messages.

Window controls

Title Bar Shows the room being controlled by the current Manual Level Control window. You can have windows for more than one room open at the same time. The number of windows you can have open is limited only by system memory.

Sliders Set channel levels by selecting sliders and:

- moving the slider or sliders, or
- setting the level using the keyboard or the **Home** and **End** keys.

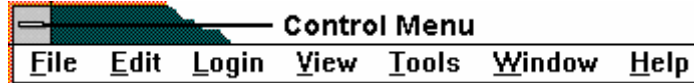
Preset Lets you select a preset for recording the current slider levels.



Records the current slider levels into the selected preset.

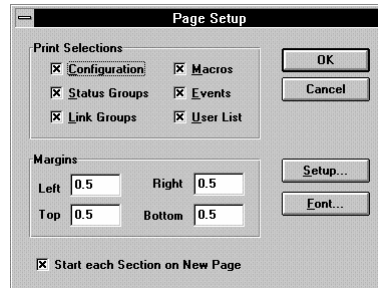
Menu Bar

The *Menu Bar* lets you get to the other menus in the program. Detailed description of various functions are included under each submenu.



To open a menu, click the menu name or press **Alt** and the underlined letter of the menu name.

Page Setup Dialog Box



The *Page Setup* dialog box lets you select what information to print, set the printing margins, and set the printer font.

To open this dialog box

From the *File* menu, choose *Page Setup*, or press **Alt+F, S**.

Dialog box controls

Print Selections Check the boxes beside each of the items you want to include in the printout.

Margins Type in the margins, in inches.

Start each section on a new page Check this box if you want each section to print on a separate page.



Saves the page setup options and closes the dialog box.



Closes the dialog box without saving the page setup options.



Opens the Windows Print Setup dialog box.




Opens the Font dialog box so that you can choose a font for printing the data.

Preset Copy Dialog Box




The *Preset Copy* dialog box lets you copy information between the current preset and another preset. It copies the lighting level information, all preset times, and preset links.

To open this dialog box in Copy to Preset mode

From the *Edit* menu, choose *Copy To*, or press . In this mode, you will copy information from the preset that is in the *Preset Editor* window to the selected preset.

To open this dialog box in Copy from Preset mode

From the *Edit* menu, choose *Copy From*, or press . In this mode, you will copy information from the selected preset to the preset that is in the *Preset Editor* window.

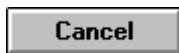
Dialog box controls

Room Lets you select the room you will be copying to or from.

Preset Lets you select the preset you will be copying to or from.



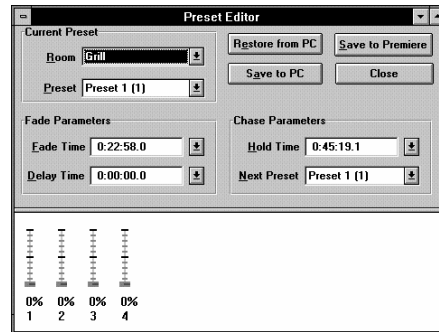
Copies the preset and closes the dialog box.



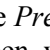
Closes the dialog box without copying any preset information.

Preset Editor Window

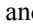

The *Preset Editor* window lets you edit all of the levels and times in any preset on the network. Preset recording from this window is blind. Lights do not change while you are adjusting them. Even if you are recording the currently selected preset you need to select it again after recording to change the lights in the room.

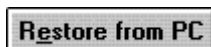


To see this window, click 

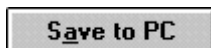
Or from the *Edit* menu, choose *Presets*, or press . If the *Preset Editor* is already open, you can also select it from the *Window* menu or click on any portion of the window to bring it to the top.

Dialog box controls

- Room** Lets you select the room you will be editing.
- Preset** Lets you select the preset you will be editing.
- Fade Time** Lets you type in or select a fade time.
- Delay Time** Lets you type in or select a delay time.
- Hold Time** Lets you type in or select a hold time.
- Next Preset** Lets you select the next preset.
- Sliders** Set channel levels by selecting sliders and:
- moving the slider or sliders, or
 - setting the level using the keyboard or the  and  keys.



Reads the current preset's attributes and channel levels from the local computer's disk.



Saves the current settings, regardless of how they were created, to the local computer's disk.

Save to Premiere

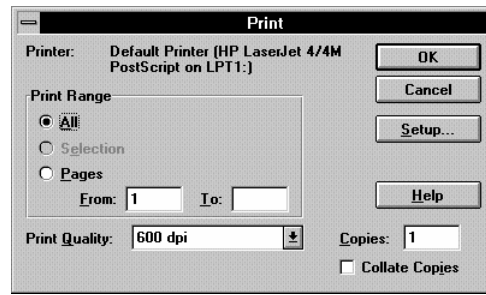
Saves the current settings, regardless of how they were created, to the Premiere Processors. This does not save preset data to the Premiere Configuration file on your PC. If this is a temporary setting, you can later restore the values from the Premiere Configuration file on your PC by using **Restore from PC** and then saving the values to the Premiere Processor.

Close

Closes the window. All changes made since the last time you used **Save to PC** or **Save to Premiere** will be discarded.

Print Dialog Box

The *Print* dialog box lets you print out your Premiere Network Manager settings.



To open this dialog box

From the *File* menu, choose *Print*, or press .

Dialog box controls

Printer This is the active printer and printer connection. Choose the Setup option to change the printer and printer connection.

Setup Displays a Print Setup dialog box, so you can select a printer and printer connection.

Print Range Specify the pages you want to print:

All Prints the entire document.

Pages Prints the range of pages you specify in the From and To boxes.

Copies Specify the number of copies you want to print for the above page range.

Collate Copies Prints copies in page number order, instead of printing multiple copies of each page before printing the next page.

Print Quality Select the quality of the printing. Generally, lower quality printing takes less time to produce.



Starts the printing as specified. The Printing dialog box appears while the Premiere Network Manager is sending output to the printer. To abort printing, click **Cancel**.



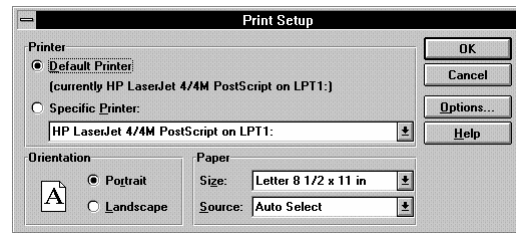
Closes the dialog box without printing.



Opens this help topic.

Print Setup Dialog Box

The *Print Setup* dialog box lets you set your printer, the paper orientation, and paper size.



To open this dialog box

In the *Print* dialog box, click **Setup**.

Dialog box controls

Printer Select the printer you want to use. Choose the Default Printer; or choose the Specific Printer option and select one of the current installed printers shown in the box. You install printers and configure ports using the Windows Control Panel.

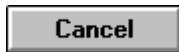
Orientation Choose Portrait or Landscape.

Paper Size Select the size of paper that the document is to be printed on.

Paper Source Some printers offer multiple trays for different paper sources. Specify the tray here.



Saves the print setup options and closes the dialog box.



Closes the dialog box without saving the print setup options.



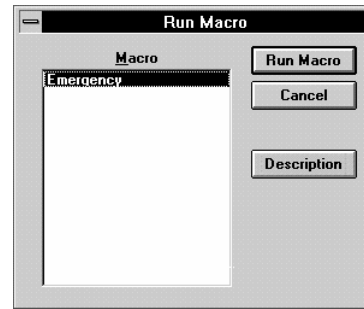
Displays a dialog box where you can make additional choices about printing, specific to the type of printer you have selected.



Opens this help topic.

Run Macro Dialog Box

The *Run Macro* dialog box lets you run any named macro that has already been defined.



To open this dialog box, click 

Or from the *Tools* menu, choose *Run Macro*, or press .

Dialog box controls

Macro list Lets you select the macro to run. The macro must already have been defined using the Macro Editor dialog box. Double-clicking on a macro name is the same as selecting the macro and clicking **OK**.



Runs the selected macro and closes the dialog box.



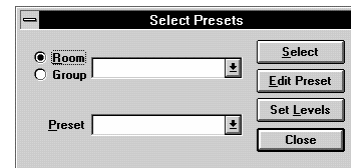
Closes the dialog box without running a macro.



Opens the Macro Description dialog box.

Select Presets Dialog Box (#1)

The *Select Presets* dialog box lets you select presets for any room or group controlled by the Premiere Network Manager.



To open this dialog box click 

Or from the *Tools* menu, choose *Select Presets*, or press

Dialog box controls

Preset options

- Room** Lets you select a preset for a room.
- Group** Lets you select a preset for a group.

Room/Group drop down list box Lets you select the room or group to work with.

Preset drop down list box Lets you select the preset to activate or edit. This list shows preset names for rooms, but shows the preset number for groups. The On and Off presets are shown as On and Off in rooms and in groups.



Activates the selected preset. Activating a preset for a group is the same as going to all of the rooms controlled by the group and individually activating the same preset.



Opens the Preset Editor window and closes the Select Presets dialog box. This button is inactive if you clicked the Group option button.



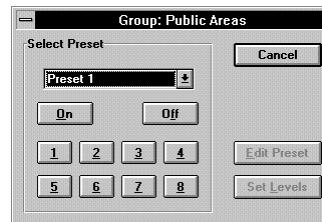
Opens a Manual Level Control window for the selected room and closes the Select Presets dialog box. This button is inactive if you clicked the Group option button.



Closes the Select Presets dialog box.

Select Presets Dialog Box (#2)

The *Select Presets* dialog box lets you select presets if you already have a room or group selected.



To open this dialog box

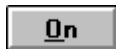
Double-click a group or room name in a Status window.

Dialog box controls

Preset drop down list box Lets you select and activate a preset.



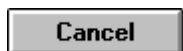
Activates one of the first 8 presets for the group or room. These presets are the default options for pushbutton stations, and are therefore the most commonly used presets in Premiere systems.



Activates the ON preset for the group or room.



Activates the OFF preset for the group or room.



Closes the Select Presets dialog box without selecting a preset.



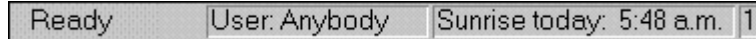
Opens the Preset Editor window and closes the Select Presets dialog box. This button is inactive if you entered this dialog by double-clicking on a group.



Opens a Manual Level Control window for the selected room and closes the Select Presets dialog box. This button is inactive if you entered this dialog by double-clicking on a group.

Status Bar

The status bar is at the bottom of the Premiere Network Manager window. To show or hide the status bar, use the Status Bar command in the View menu.

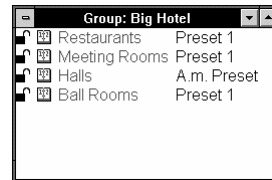


The left area of the status bar provides descriptions of the currently selected menu item or toolbar button when you depress the left mouse button while pointing to the object. If you do not want to execute a command after seeing the description, move the pointer off the menu item or button before releasing the mouse button.

The right area of the status bar shows the name of the current logged-in user, the time of today's sunrise (if current time is before noon) or sunset (if current time is after noon), and the current time.

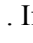
Status Window

Status windows display the current lighting and lockout state of the member groups, rooms, or stations. Any changes in these states are immediately reflected in the status window. Lighting or lockout states may be easily modified by double clicking on the item you wish to change.



Tip: If you have a color monitor, it will be easier to read the status windows if you set the fonts for groups, rooms, stations and presets to different colors. To do this, choose *Fonts* from the *View* menu, and select the submenu item for which to change the fonts. This will open the Font dialog box.

To see the Top Status window, click 

Or from the *View* menu, choose *Top Group*, or press . If a status window is already open, you can also select it from the *Window* menu or click on any portion of the window to bring it to the top.

To open any other Status window or bring it to the top


From the status group that contains the group you want to access, double-click on the group name.

Status window controls


Title Bar Shows the name of the group or room.

Lock Icon Double-click the icon to change the lock status of the group, room, or station. Lock status can be:



The  icon appears when the lock status of all stations in a group or room are not the same. Changing the lock status for a group or a room (as opposed to a single station) will change the lock status for all stations in the group or room.

Premiere Network Manager tracks all locking status changes. If you change the lock status of a control station from the station, Premiere Network Manager will update its display status.

 **(event icon)** Double-click the icon to see the events for this group or room. This will open a event window, from which you can edit any events tied to the group, room, or station.

Group, Room, or Station Name Double-click on a name to open a window showing the contents of the group or room. Think of this as zooming into a lower level of detail. Since stations are the lowest level of detail nothing will happen if you double-click on a station name.

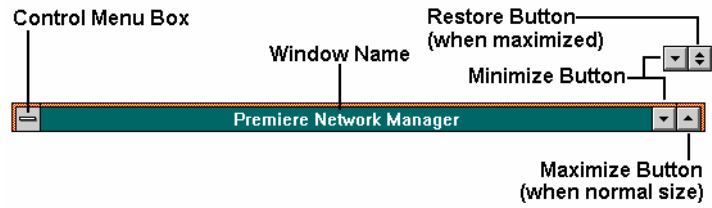
Double right-click on a name to modify the group, room, or station name. Type the new name in the dialog box that appears and click **OK**.

Preset Name Double-click the preset name to open the *Select Preset* dialog box. From the *Select Preset* dialog box you can select a new preset, open the Preset Editor window, or open the Manual Level Control window.

Double right-click the preset name to modify the preset name. Type the new name in the dialog box that appears and click **OK**.

Title Bar

The title bar is located along the top of a window or dialog box. It contains the name of the application and document.



To move the window or dialog box, drag the title bar.

A title bar may contain the following elements:

- Application Control-menu box (main window)
- Document Control-menu box (child windows)
- Maximize button
- Minimize button
- Name of the application (main window)
- Name of the group (status windows)
- Name of the function (editing windows)
- Restore button

Toolbar

The toolbar is displayed across the top of the application window, below the menu bar. It provides quick mouse access to many tools used in Premiere Network Manager.

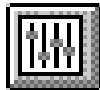
To hide or display the Toolbar


From the *View* menu, choose *Toolbar*, or press .

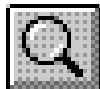
Toolbar buttons



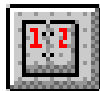
The **Select Presets** button opens the *Select Presets* dialog box, from which you can activate any preset in any group or room.




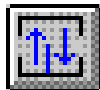
To create or edit presets, click  (the **Preset Editor** button) or choose *Presets* from the *Edit* menu to open the *Preset Editor* window.



The **Preset Editor** button opens the *Preset Editor* window, which lets you edit preset data for any preset on the network.



To select a new preset for a room, click  (the **Select Presets** button) or choose *Select Presets* from the *Tools* menu to open the *Select Presets* dialog box.



The **Top Group** button brings the "top" *Group Status* window to the top of the window pile. If this window is not open, it is opened and put on the window list.



The **Event Editor** button opens the *Event Editor* window, which lets you set up or edit events for any station, room, or group on the network.



The **Link Rooms** button opens the Room Link dialog box, which lets you control how rooms are linked together.

The **Run Macro** button opens the Run Macro dialog box, which lets you run macros. To create or edit macros, choose *Macros* from the *Edit* menu to open the *Edit Macros* dialog box.

The **Help** button opens the Premiere Network Manager on-line help file to its introduction page, and opens the contents window for the help file.

Tools Menu Commands

To open this menu

The *Tools* menu lets you access several Premiere Network Manager tools.

From the Menu Bar, choose *Tools*, or press .

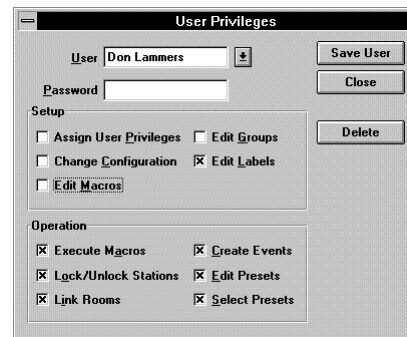


Table 5. Tools Menu Commands

Command	Keyboard	Description
<i>Select Presets</i>		Opens the Select Presets dialog box so you can select presets in any group or room on the network.
<i>Run Macro</i>		Opens the Run macro dialog box so you can run a previously defined macro. To create or edit macros, use the Macros command in the Edit menu to open the Edit Macros dialog box.
<i>Room Links</i>		Opens the Room Links dialog box.
<i>Comm Stats</i>		Opens the Communications Statistics window.
<i>Dimmer Status</i>		Opens the Dimmer Status window if dimmer status software has been installed on your system. See the manual for your dimmer status software for more information.

User Privileges Dialog Box

The *User Privileges* dialog box lets you edit the privileges assigned to each user. You must have logged in under a user name and password that lets you assign user privileges.



To open this dialog box

From the *Edit* menu, choose *Users*, or press .

The privileges assigned to "Anybody" are available whenever all other people have logged off of the system. You should set privileges for Anybody assuming that anyone walking past the PC could access the software.

Dialog box controls

User drop down list box Lets you type in a new user name or select an existing user to edit. To create a new user, type a name in the text portion of the drop down list and press ENTER.

Password Type the user's password here.

Assign User Privileges Check this box if the user will be allowed to access this dialog box.

Change Configuration Check this box if the user will be allowed to change any of the items in the *Configure* menu items of the *File* menu.

Edit Macros Check this box if the user will be allowed to edit macros.

Edit Groups Check this box if the user will be allowed to edit group assignment information.

Edit Names Check this box if the user will be allowed to edit group, room, station, channel, or preset names.

Execute Macros Check this box if the user will be allowed to run macros.

Lock/Unlock Stations Check this box if the user will be allowed to lock and unlock stations.

Link Rooms Check this box if the user will be allowed to change room links.

Create Events Check this box if the user will be allowed to create new events.

Edit Presets Check this box if the user will be allowed to edit preset level and timing information.

Select Presets Check this box if the user will be allowed to activate presets.

Save User

Saves the new user information and closes the dialog box.

Close

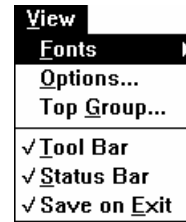
Closes the dialog box without saving changes.

Delete

Deletes the currently selected user from the user list.

View Menu Commands

The *View* menu lets you open the top group or change the view options for the Premiere Network Manager, including display fonts. It also lets you select whether to display the toolbar and status bar, and whether to save the current window locations on exiting the software.



To open this menu

From the Menu Bar, choose *View*, or press .

Table 6. View Menu Commands

Command	Keyboard	Description
<i>F</i> onts		Opens a submenu with the following items:
<i>G</i> roups		Opens the font dialog box and lets you choose the font for showing groups
<i>R</i> ooms		Opens the font dialog box and lets you choose the font for showing rooms
<i>S</i> tations		Opens the font dialog box and lets you choose the font for showing stations
<i>P</i> resets		Opens the font dialog box and lets you choose the font for showing presets
<i>E</i> vent Editor		Opens the font dialog box and lets you choose the font for the Event Editor
<i>O</i> ptions		Opens the Display Options dialog box so that you can set what information will be displayed in the group windows for stations, rooms, presets, and channels, and how it will be sorted.
<i>T</i> op Group		Opens the top status group or puts its window on top.
<i>T</i> oolbar		Shows or hides the toolbar (alternate action). This menu item is checked when the toolbar is visible.
<i>S</i> tatus Bar		Shows or hides the status bar (alternate action). This menu item is checked when the status bar is visible.
<i>S</i> ave On <i>E</i> xit		Tells the Premiere Network Manager whether or not to save the current window locations and view settings when you exit the program. Window locations will be saved if this menu item is checked.

Window Menu Commands

The *Window* menu lets you arrange the child windows within the Premiere Network Manager application window.

Window
Cascade
Tile
Arrange Icons
Close All
✓ 1 Group: Restaurants
2 Group: Meeting Rooms

To open this menu

From the Menu Bar, choose *Window*, or press .

Table 7. Window Menu Commands

Command	Keyboard	Description
<i>Cascade</i>		Arranges windows in an overlapped fashion. This can be very handy if you have managed to get one of the child window title bars into a position where you cannot move the child window.
<i>Tile</i>		Arranges windows in non-overlapped tiles.
<i>Arrange Icons</i>		Arranges icons of minimized windows.
<i>Close All</i>		Closes all of the currently open windows.
<i>Window 1, 2, ...</i>	, , ...	Brings the specified window in front of all other windows.

Strand Lighting

Instruction Sheet

Published by the Product Management Group of Strand Lighting 31 October 1996
Copyright 1996, Strand Lighting Rev. B4
By: Don Lammers 2-450100-010

Premiere Control Station Installation

- Fit the backbox flush with the wall (please consult Strand Lighting for sizes). Make sure it is level so that the station will be level when installed.
- Loosen the set screws on the bottom edge of the control station with the included Allen Key.
- Remove the sub plate by swinging its bottom edge away from the station.
- Mount the sub plate to the backbox with the supplied countersunk screws. **Do not** overtighten screws as you may bend the sub plate. **Do not** substitute other types of screws for the supplied screws.
- Set the station address using rotary switch S1 on the back of the control station. Refer to your system drawings for the station address.

- Turn the Premiere system OFF and connect the C-LAN cable to the terminal block on the rear of the station as shown in the table.

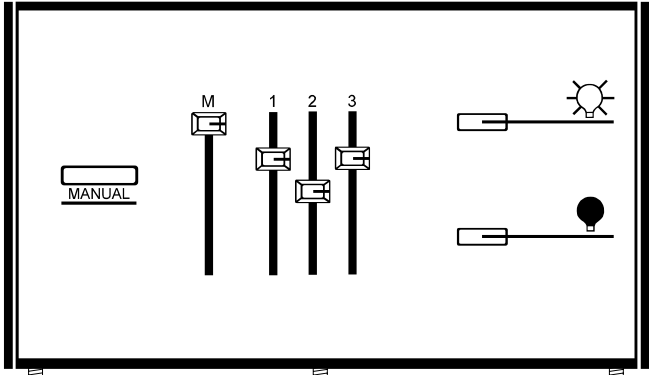
Connect an earth ground to the backbox in accordance with current IEE or equivalent local wiring regulations and practice. Earth ground must be kept separate from the SCREEN terminal.

Cable: Belden 9773 or equal.					
Max Length: 1000 feet (300m - daisy chained runs only for each C-LAN).					
Connector: Terminal block in processor cabinet & dimmer rack.					
Term. #	Terminal Label	Signal	Comments	Pairs	Cable Color
4	V +	POWER +	Control Station power +	pair 1	Blk + Wh
1	V -	POWER -	Control Station power -	pair 3	Blk + Gn
2	LAN +	LAN +	LAN Signal True	pair 2	Red
3	LAN -	LAN -	LAN Signal Complement		Black
5					
6	S	SCREEN			Screen wire

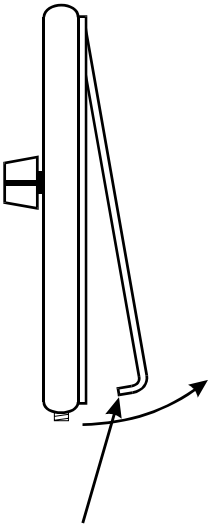
- Hook the top of the station onto the tabs on the sub plate and swing it down flush with the wall. **Do not force the station.** If the fit seems too tight, make sure that you have the correct backbox and have installed the sub plate correctly.

Make sure that the C-LAN cable does not put undue pressure on the control station printed circuit board or its components.

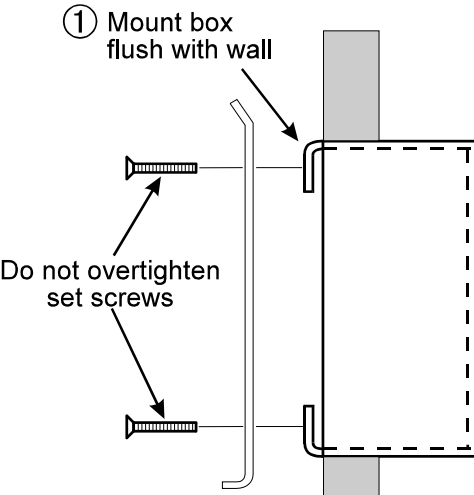
- Lightly tighten the set screws and store the Allen Key in a safe place.



② Loosen set Screws



③ Remove mounting bracket



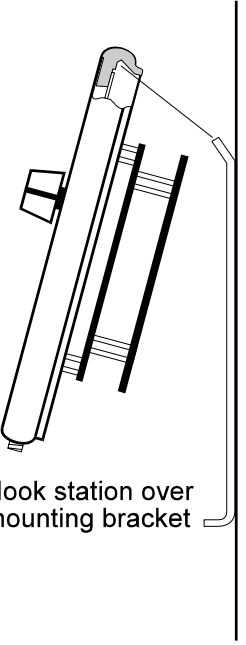
① Mount box flush with wall

Do not overtighten set screws

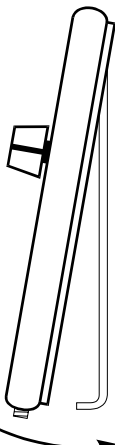
④ Attach mounting bracket to back box

⑤ Set station address using rotaty switch S1

⑥ Connect control wires to station



⑦ Hook station over mounting bracket



⑧ Swing station into place and tighten set screws

Index

A

- About box, 68
- access, 98
- access privileges, 35
- activate, 119
- add
 - user, 116
- Add Config File dialog box, 69
- Assign Groups dialog box, 69
- astronomical clock, 2, 71
- Astronomical Variables dialog box, 71
- auto open, 26, 92

B

- Boxes
 - Dialog, 12

C

- change
 - event type, 82, 84, 86
 - light levels, 101, 104, 109
 - presets, 109, 110
 - room links, 96
- channel, 2
- channel name, 77
- choose
 - configuration files, 73
 - Premiere Processors, 73
- Cleanup, 2
- clock, 71, 74
- commands
 - Edit menu, 81
 - File menu, 88
 - Help menu, 95
 - Login menu, 98
 - Menu Bar, 102
 - toolbar, 115
 - Tools menu, 116
 - View menu, 118
 - Window menu, 119
- comments, 6
- Communications Parameters dialog box, 72
- Communications Statistics window, 72
- configuration, 31
- configuration software, 3
- Configuration File Selection dialog box, 73
- Configuration information
 - printing, 60, 62, 63, 66
- control station, 3
- conventions, 2
- copy
 - presets, 103

- create
 - groups, 69
 - Link groups, 45, 47
 - macros, 100
 - new file, 28
 - room links, 96
 - Status groups, 37, 39
 - Top group, 41, 42
 - user, 35

D

- definitions, 2
 - Windows, 7
- delay time, 3
- delete
 - user privileges, 116
- dialog box
 - Add Config File, 69
 - Assign Groups, 69
 - Astronomical Variables, 71
 - Communications Parameters, 72
 - Configuration File Selection, 73
 - Display Options, 75
 - Edit Channel Name, 77
 - Edit Group Name, 78
 - Edit Preset Name, 78
 - Edit Room Name, 79
 - Edit Station Name, 80
 - Edit User Privileges, 116
 - Event Type, 82, 84, 86
 - File Open, 89
 - File Save As, 90
 - Group Attributes, 94
 - Link Rooms, 96
 - Macro Description, 99
 - Macro Editor, 100
 - Page Setup, 102
 - Preset Copy, 103
 - Print, 106
 - Print Setup, 107
 - Run Macro, 108
 - Select Presets, 109, 110
 - Set Time, 74
- Dialog Boxes, 12
- display, 118
- Display Options dialog box, 75
- Document
 - Scrolling, 13

E

edit

- channel name, 77
 - event type, 82, 84, 86
 - group name, 78
 - macro description, 99
 - macros, 100
 - preset name, 78
 - room name, 79
 - station name, 80
 - user privileges, 116
- Edit Channel Name dialog box, 77
- Edit Group Name dialog box, 78
- Edit menu, 81
- Edit Preset Name dialog box, 78
- Edit Room Name dialog box, 79
- Edit Station Name dialog box, 80
- Edit User Privileges dialog box, 116
- Editing, 81
- Text, 16
 - using a Mouse, 16
 - Using the Keyboard, 16
- Event Type dialog box, 82, 84, 86

F

fade time, 3

File

- saving, 30
 - starting new, 28
- File menu, 88
- File Open dialog box, 89
- File Save As dialog box, 90
- files, 69, 88, 89, 90
- auto open, 26, 92
 - errors, 26, 92
 - Premiere Configuration, 25, 91
 - Premiere disk, 26, 92
 - Premiere Network Manager, 25, 91
- print, 106
- fonts, 118
- Functions
- Time Clock, 55

G

- getting help, 95
- glossary, 2
- Windows, 7
- group, 3
- Group Attributes dialog box, 94
- group box, 3
- group name, 78

groups

- assign, 69
- create, 69
- creating, 39, 45
- Link, 45, 47
- organizing, 37, 45
- set attributes, 94
- status, 37
- Top, 41, 42

H

- hard disk, 3
- help, 111
- Help menu, 95
- hold time, 4

I

Installing the software, 22

K

- Keyboard
- editing with, 16

L

- level, 4
- level control
- manual, 101
 - presets, 109
- levels
- change, 110
 - change manually, 101
 - change presets, 109
 - run macros, 108
- light levels, 104
- run macros, 108
- link, 4
- Link groups, 45, 47
- creating, 45
 - organizing, 45
- link rooms, 96
- Link Rooms dialog box, 96
- login, 36
- Login menu, 98
- logout, 36

M

- Macro Description dialog box, 99
- Macro Editor dialog box, 100
- Macros
- create, 100
 - description, 99
 - edit, 100
 - recording, 58
 - run, 108

- Manual Level Control window, 101
- manual organization, 1
- menu
 - Edit, 81
 - File, 88
 - Help, 95
 - Login, 98
 - Tools, 116
 - View, 118
 - Window, 119
- Menu Bar, 102
- Mouse
 - editing with, 16

N

- Necessities, 21
- network, 72
- New File, 28
- new users, 35
- next preset, 4

O

- open file, 89
- options, 118
 - display, 75
- organization, 1

P

- Page Setup dialog box, 102
- Parts of a Window, 9
- parts purchases, 6
- password, 4, 98
- Premiere Configuration files, 25, 91
- Premiere Configuration Software, 4
- Premiere disk files, 26, 92
- Premiere Network Manager files, 25, 91
- preset, 4
- Preset Copy dialog box, 103
- Preset Editor window, 104
- preset name, 78
- presets
 - copy, 103
 - edit, 104
 - select, 109, 110
- Print dialog box, 106
- Print Setup dialog box, 107
- Printing
 - configuration information, 60, 62, 63, 66
 - page setup, 102
 - print, 106
 - print setup, 107
- Processor ID, 4

Q

- questions, 6

R

- Recording macros, 58
- room link group, 4
- room name, 79
- run
 - macros, 108
- Run Macro dialog box, 108

S

- save as, 90
- Saving a file, 30
- Scrolling
 - Document, 13
 - List, 13
- select
 - configuration files, 73
 - presets, 109, 110
- Select Presets dialog box, 109, 110
- set
 - astronomical variables, 71
 - Communications Parameters, 72
 - Group Attributes, 94
 - time, 74
- Set Time dialog box, 74
- setup, 31
 - printing, 107
- Software
 - installing, 22
 - starting, 23
- Starting a new file, 28
- Starting the software, 23
- station name, 80
- statistics, 72
- Status Bar, 111
- status group, 5
- Status groups, 37
 - creating, 39
 - organizing, 37
- Status window, 112
- suggestions, 6
- system setup, 31

T

- technical assistance, 6
- technical questions, 6
- Terminology
 - Windows, 7
- terms, 2
- Text Editing, 16
- The Basic Necessities, 21
- time, 74, 111
- Time Clock
 - Functions, 55
- Title Bar, 114
- toggle, 5
- toolbar, 115
- tools, 116
- Tools menu, 116
- top group, 5, 41, 42

U

user, 98, 111
user privileges, 35

V

version, 68
view
 options, 75
View menu, 118

W

window
 Communications Statistics, 72
 Manual Level Control, 101
 Preset Editor, 104
 Status, 112
Window menu, 119
Windows, 119
 Dialog Boxes, 12
 Glossary, 7
 Parts of a window, 9
 terminology, 7