

HMI 4 kW Daylight Fresnel

- Improved light quality and output, producing flatter and more even field
- High quality, rugged, durable
- Corrosion resistant
- IP23 rated, so the unit can be used outdoors in humid conditions
- Compatibility of parts throughout the range
- A comprehensive range of accessories, interchangeable with existing Quartzcolor products
- Easy to service and maintain
- ON-OFF buttons, operated from both head and ballast
- Bonding eyes and rigging hooks
- Front and back focusing
- New focus system, easy to adapt from manual to pole operation and maintenance-free
- Quick release lamp holder
- Easy running barndoor ears
- Scratch resistant, black, non-reflective housing
- All heads supplied with barndoor, colour frame and head to ballast cable
- Meets all relevant international standards and regulations



Operational data

Safety:

A microswitch system prevents the lamp operating if the front section is open.

25 x 25 mm wire mesh guard.

Accessory fitting:

Stainless steel ears.
Spring loaded top catch for retention of accessories.

Tilt adjustment:

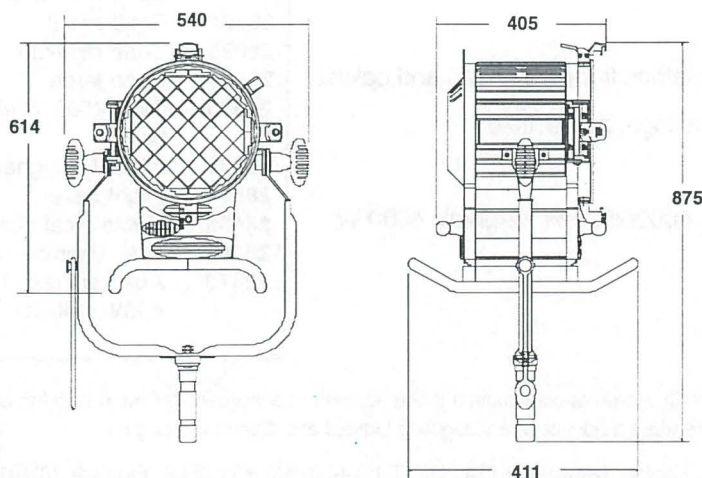
Pivot located at centre of gravity for excellent balance and positive locking.

Focus adjustment:

Front and rear focusing knob for smooth and precise action from spot to flood positions

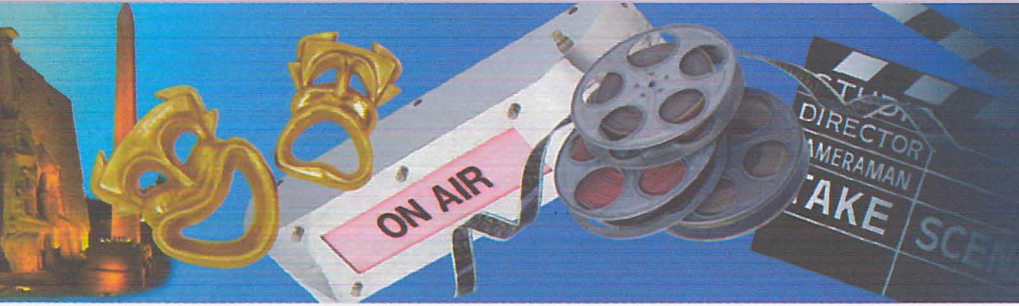
Lamp access:

Hinged lens door allows easy access for lamp replacement.



Weights & dimensions

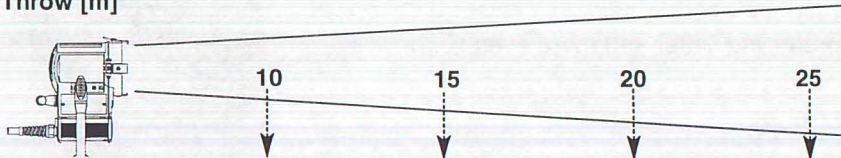
Lens diameter	300 mm	Weight (head+stirrup+skid)	23.5 kg	Packed volume	610x640x750 mm
Accessory diameter	410 mm	Packed weight	28.5 kg	Ballast dimensions	
Filter cut size	400x400 mm			p/n 25050	270x235x380 mm -15.6Kg
				p/n 25250	488x388x635 mm - 61Kg



Photometric data

Typical performance based on 4000 W HMI lamp:

Throw [m]



	Lux	φ [m]	Lux	φ [m]	Lux	φ [m]	Lux	φ [m]
SPOT (6.3°)	15,600	1.1	6,930	1.6	3,900	2.2	2,500	2.7
FLOOD (60°)	1,740	11.5	780	17.3	840	23	280	28.8

Mechanical data

- Paint / Finish:** Powder coated epoxy paint with special extra high temperature treatment in critical areas. External textured low gloss finish
- Lamp house:** Stainless steel with aluminium extrusions and die cast components
- Lamp holder:** High voltage with quick release pin clamping
- Mounting:** Robust tubular steel stirrup with standard DIN or BS socket

Environmental data

- Max operating ambient temperature:** 45°C
- IP Rating:** IP 23
- Tilt recommended angle of use:** -60° / 0 / 60°

Electrical data

- Switching:** ON/OFF double pushbuttons from both head and ballast
- Ignitor:** Small, compact, high voltage, hot restrike
- Ignition voltage:** 65 kV
- Ballasts:** Electronic flicker-free, 4000/2500 W Magnetic 4000 W
- Standards compliance:** CE marking

Lamp data

- HMI/MSR 4000W single ended**
- LCL (mm)** 142
- Base** G38
- Lumens** 380,000
- Rated life hours (H)** 500
- Colour temp. (K)** 6000

Ordering information

Cat No Description

- 27911** HMI 4 kW bare head with stirrup
- 27070** HMI 4 kW supplied with stirrup, colour frame, 4 leaf rotating barndoor, 7.5 metre extension cable

Optional Accessories

Cat. No Description

- 28097** Colour frame
- 28115** 4 leaf barndoor
- 28207** 7.5 metre ext. cable
- 28208** 15 metre ext. cable
- 28307** Scrim set
(one double scrim, one single scrim, one half double scrim, one half single scrim)
- 28094** Cone small
- 28095** Cone medium
- 28096** Cone large
- 25050** 4000/2500 W electronic ballast
- 25250** 4000 W magnetic ballast
- 28822** Flight case
- 28405** Mechanical dimmer
- 28406** DMX dimmer
- 28873** Adaptor cable to other 4 kW ballasts

The Company reserves the right to make any variation in design or construction to the equipment described. © Strand Lighting Ltd 1998. Strand™, Strand Lighting™, Strand Quartzcolor™ are trade marks of Strand Lighting Limited and Strand Lighting Inc.

Strand Lighting Ltd North Hyde House Hayes Rd Heston Middx UB2 5NL UK Tel: +44 (0)181 571 3588 Fax: +44 (0)181 571 3305
 Strand Lighting GmbH Ullsteinstrasse 114-142 D-12109 Berlin Germany Tel: +49 (0) 30/70 79 51 0 Fax: +49 (0) 30/70 79 519 9
 Strand Lighting Italia srl Via delle Gardenie 33 00040 Pomezia-Roma Italy Tel: +39 06 91963.1 Fax: +39 06 9147136
 Strand Lighting Asia Ltd 7/F Corporation Square 8 Lam Lok Street Kowloon Bay Hong Kong Tel: +852 2757 3033 Fax: +852 2757 1767

LONDON - BERLIN - ROME - PARIS - MOSCOW - LOS ANGELES - NEW YORK - TORONTO - HONG KONG