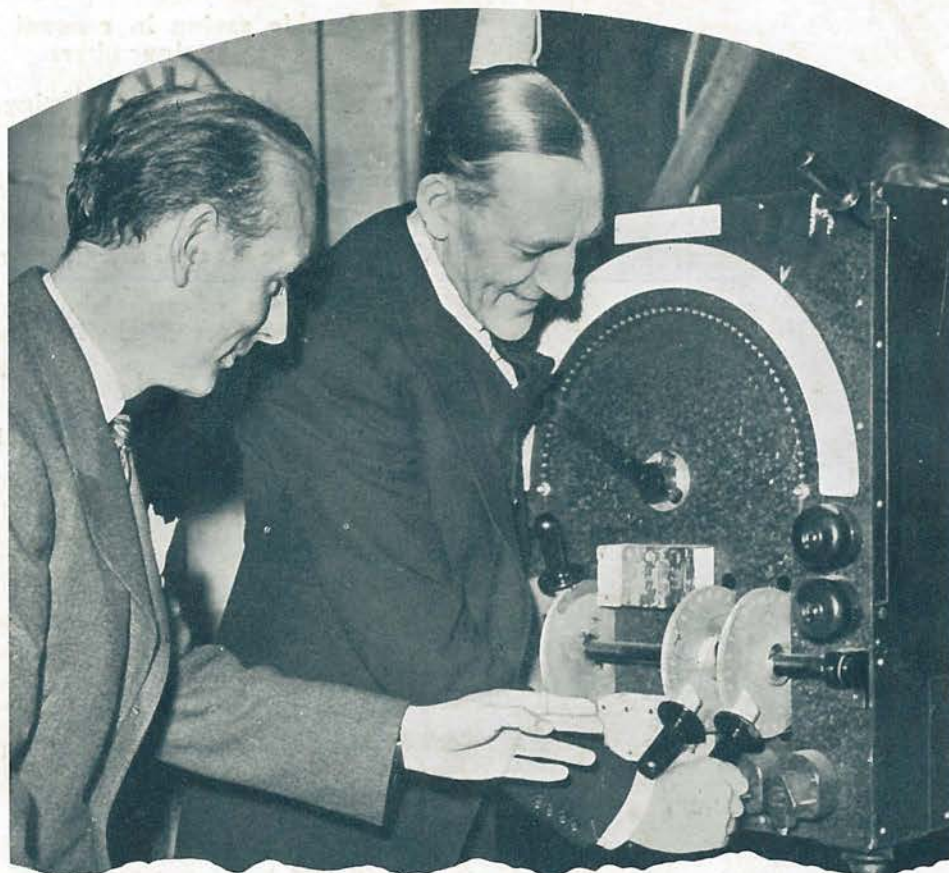


# *Furse* **DELICOLOR**

## **Technique of STAGE LIGHTING**

(BRITISH & FOREIGN PATENTS PENDING)



*Mr. Jack Hulbert, the well-known Producer-Actor, with one of the Delicolor Units at the Saville Theatre, London.*

**The American Theatre Expert, Mr. David Murray, says of Delicolor  
"It is the greatest thing in the theatre world since Talking Pictures"**

There are portable Delicolor Control Units suitable for touring, and multiples of units can be built into one control board and be individually or collectively operated. Any colour between 1 and 54 in the British stage gelatine range can be produced at any desired speed, and in any order from lighting equipment controlled by Delicolor.

**SUITABLE FOR THEATRE STAGES - CINEMAS - BALLROOMS - SHOPS - &c.**



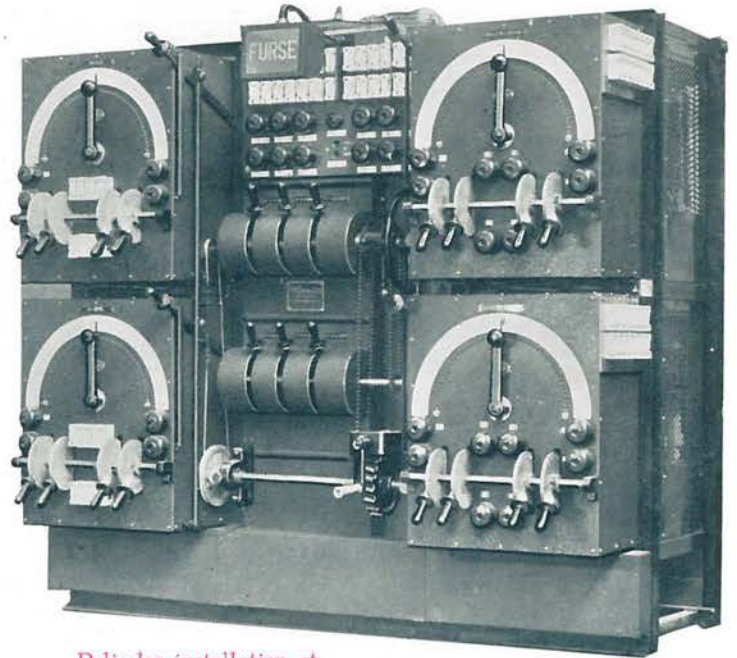
# DELICOLOR

## For Permanent Installations

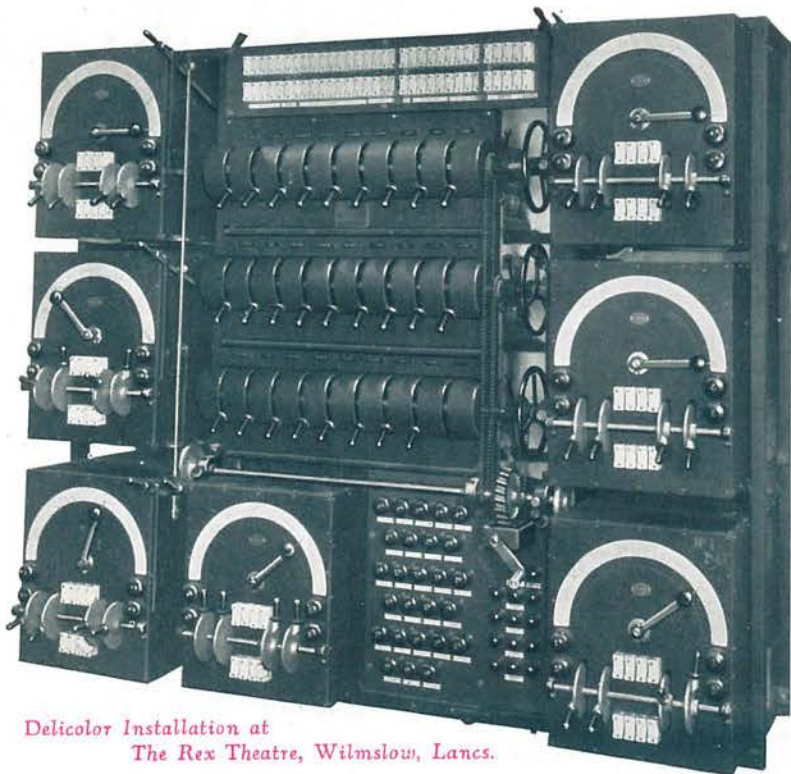
**D**ELICOLOR Control Units can be built into a composite Stage Dimmer Switchboard and used alone or in conjunction with a number of separate dimmer circuits. Two examples are illustrated here, and in each case there are a number of hand operated dimmers for various independent circuits, in addition to the Delicolor units.

Master control can be provided, and each of the boards illustrated is arranged so that when desired both Delicolor controllers and independent hand dimmers can be simultaneously operated on a slow motion master handle. The Delicolor control units shown in the large board operate the foot-

*(continued below)*



*Delicolor installation at  
The Central Pier, Blackpool*



*Delicolor Installation at  
The Rex Theatre, Wilmslow, Lancs.*

lights, battens, cyclorama lighting equipment and wing floods of a stage installation, while the independent hand dimmers control a number of separate spotlight and plug circuits.

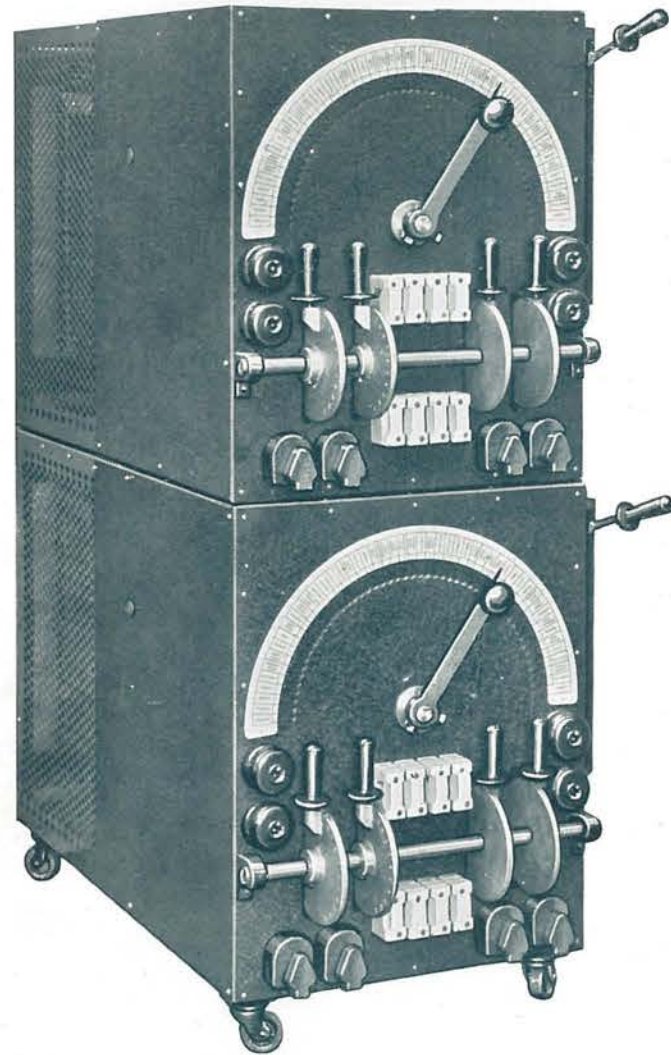
In the smaller board above, footlights and five battens are controlled by the four Delicolor units illustrated.

In addition to Grand Master operation of the Delicolor operating handles, group operation can also be provided when desired for the separate hand wheels in the Delicolor controllers so that these can be collectively operated should they be used at any time for other than Delicolour lighting effects.

INDIVIDUAL SCHEMES AND ESTIMATES WILL BE PREPARED UPON REQUEST.



**A Revolution in Colour Lighting**



Two typical Delicolor Touring Models

- Colourful beauties of Delicolor can be used to replace scenery to a considerable extent in Revues and Musical Shows.
- The necessity for changing colour filters during a Show is obviated.
- A new world of bewitching and entrancing beauty is opened up by the use of Delicolor lighting.

Producer, Stage Director, Manager and Electricians can all talk in the same language of colour — colours can be defined by their gelatine name and number, and the exact hue will always be produced when colour selected.

*Furse*

**DELICOLOR**  
**STAGE LIGHTING EQUIPMENT**

**Additional Features:**

- Considerable saving in renewal costs of stage gelatines and colour filters.
- Colourful and beautiful lighting effects hitherto unknown become possible.
- Lighting changes can follow each other with greater rapidity when desired.
- Valuable time is saved at lighting rehearsals.
- Lighting plots of an elaborate nature can be plotted and recorded with ease.
- Subtle and delicate lighting changes can be provided for Plays, enabling the lighting to synchronise with the dramatic values of the Production.

units capable of handling a total load of 36 k.w. thus occupy only 3 ft. 8 ins. x 2 ft. (over the handles) of floor space, the equipment having an overall height of 7 ft. 6 ins.

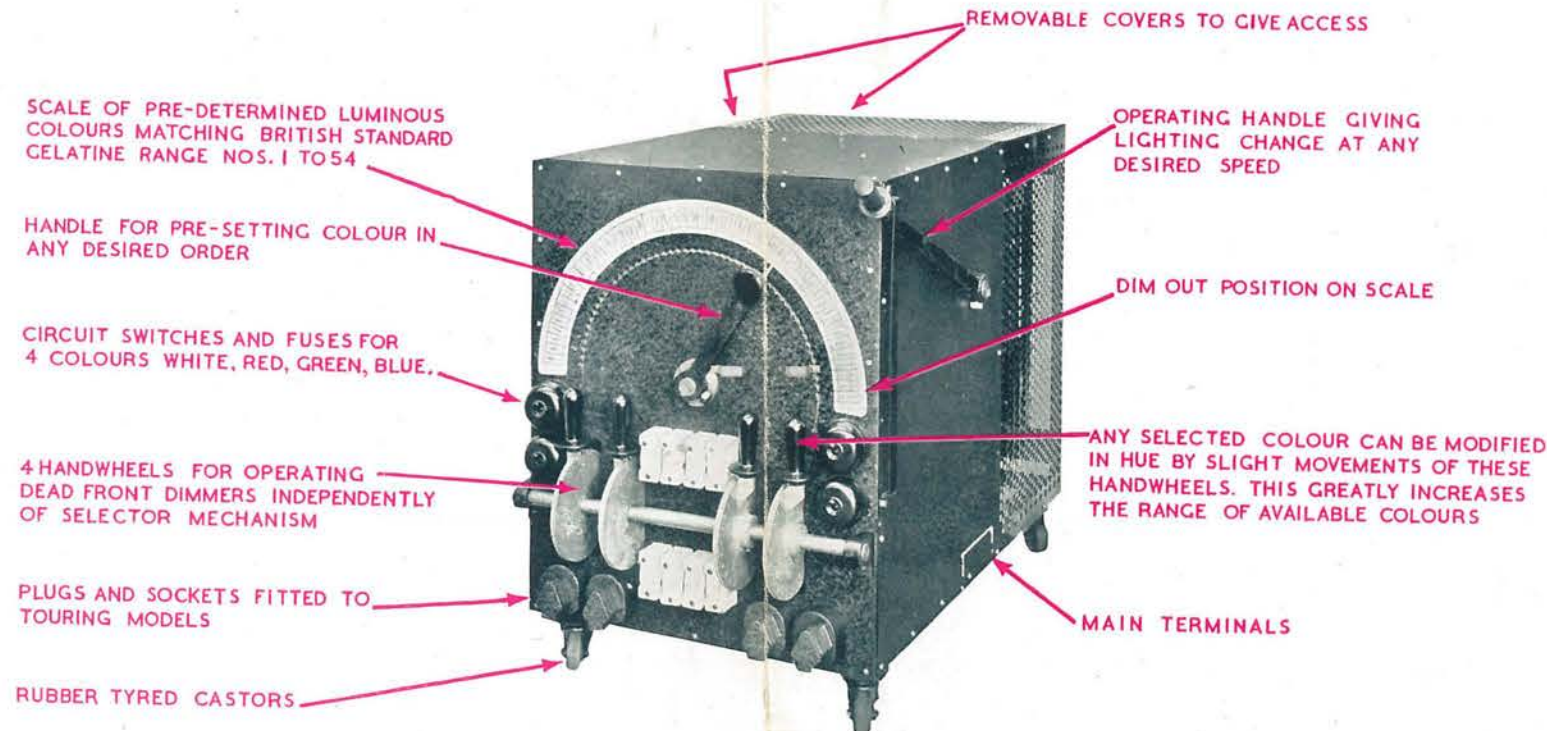
Plugs and sockets are provided on touring models to enable tails from the lighting equipment to be quickly connected, and connection to the main electricity supply is easily obtained by a length of mains cable connected to readily accessible mains terminals in the apparatus.

It is possible to use two or three different sets of multi-colour lighting equipment at various times in the Show from the same Delicolor Control apparatus, providing the electrical load is approximately equal to that of the Delicolor Dimmers. It is only necessary to change over the connecting plugs for this to be done. The Dimmers in the Delicolor apparatus can all be independently operated by hand when desired, so that ordinary single circuit lighting equipment can be plugged in and used on these dimmers during the periods when Delicolor effects are not required.

**What Delicolor can do for Showmanship**

**D**ELICOLOR equipment can be taken on tour and used on any A.C. or D.C. Supply, 200/250 volt, without alteration.

Two or three Delicolor Control Units can be stacked upon each other to save space. Three control



**Delicolor Touring Model DC.10.**

Standard Equipment suitable for use on any 200/250 volts A.C. or D.C. supply. Maximum load 3000 watts per Colour, total load 12 kilowatts. Dimensions - Height 32", Depth 44", Width 24".

Delicolor lighting effects can be obtained on any 4-colour lighting equipment fitted with Delicolor filters and in this manner, the house battens and footlights in a Theatre can be often utilised. Many people, however, prefer to tour their own Delicolor lighting equipment, and a special range is available for this purpose. Portable lighting towers mounted on rubber tyred wheels taking up little more floor space than an ordinary 1000 watt Wing Flood, are available, and are supplied complete with tails to give the 4-colour lighting circuits necessary for Delicolor Controllers. These lighting towers have a load up to 1200 watts per colour and can be quickly wheeled into Wing entrances or used for the flooding of backcloths etc.

Two portable 4-colour lighting towers with a load of 1200 watts per colour, or alternatively three with a load of 1000 watts per colour, can be operated from one Delicolor D.C.10 Touring Model. Excellent effects can be obtained, say, in Revues, by touring four of the larger towers and two Delicolor D.C.10 Controllers.

Detailed Schemes for lighting effects to suit individual requirements will be prepared on request, and estimates submitted for the Delicolor Lighting and Control apparatus.



# Delicolor

## Technique of Lighting

**D**ELICOLOR lighting effects can be obtained from Footlights, Battens, Floods, Balcony Spots, Flood Battens, Groundrows, Portable Towers, Strips, etc., and existing stage lighting equipment can often be adapted for use with the Delicolor controllers.

### Important Advantages of the Delicolor System

- ★ *The lighting can be given a hue corresponding to any standard stage gelatine hue between numbers 1 and 54 without changing the colour filters in the lighting equipment.*
- ★ *At full strength the lighting has a high intensity of illumination.*
- ★ *Important colours not in the standard British gelatine range can be selected and used with ease.*
- ★ *The selected colour can be modified in hue or brightness as desired.*
- ★ *The colour changes take place instantly, or can be regulated at any speed.*
- ★ *The lighting can merge from one colour into another in any order.*
- ★ *The next colour change required can be pre-set.*
- ★ *Lighting merges directly into the desired hue without passing through extraneous colours.*
- ★ *The lighting effect is the same each time a colour is selected.*
- ★ *Colour circuits can be controlled independently of the selector mechanism when desired.*
- ★ *Delicolor control mechanism can be used as a standard dead-front type Dimmer Switchboard without alteration.*
- ★ *The lighting changes controlled by Delicolor are smooth and flickerless.*

The Delicolor System employs circuits of three primary colours — red, green and blue, plus a fourth circuit of white which is used as a balancer. These colours are blended to produce light of almost any known colour hue. The controller is constructed to reproduce at will mixtures of light corresponding to any of the Colours between numbers 1 and 54 in the British Stage Gelatine range — other important colours can also be selected and any hue can be varied in tint and brightness to suit individual taste.

# Delicolor

REGISTERED TRADE MARK  
(Trades Mark Act 1938 - Class 11, Schedule IV)  
No. 636781

BRITISH & FOREIGN PATENTS PENDING

---

## Prominent Users

Amongst many satisfied users of Delicolor, the following well-known artists and users were early to appreciate its advantages and instal the equipment:

JACK HULBERT - GEORGIE WOOD - BIG BILL CAMPBELL,  
ISSY BONN.  
CENTRAL PIER PAVILION, BLACKPOOL - REX THEATRE, WILMSLOW, LANCS.  
GAIETY THEATRE, LEITH - ALHAMBRA CINEMA, SHOTTON  
THEATRE ROYAL, HANLEY - BERKELEY BALLROOM, GLASGOW  
PALAIS DE DANSE, MANSFIELD

## Some other Specialities

STAGE LIGHTING EQUIPMENT - Footlights, Battens, Spotlights, Floodlights,  
Arc Lamps, Spot and Flood Battens, Special Lighting Effects equipment,  
Gelatines and Fursoid Colour Media, theatre bulbs, etc.

SWITCHBOARDS, DIMMERS & DIMMER BANKS, CURTAIN CONTROLS & TRACKS,  
FIREPROOF SHUTTERS & CURTAINS, MUSIC STANDS, EXIT DOOR PANIC  
BOLTS, SCREEN FRAMES, COUNTERWEIGHTING & STAGE WINCHES, ELECTRIC  
and HANDPOWER PASSENGER & SERVICE LIFTS, ORGAN CONSOLE LIFTS.

*Enquiries invited — Illustrated literature on application.*

## W. J. FURSE & CO. LIMITED

THEATRE ELECTRICAL ENGINEERING SPECIALISTS  
TRAFFIC STREET, NOTTINGHAM

TELEPHONE: NOTTINGHAM 8213 - 6 LINES

LONDON: 9 Carteret Street, Westminster, S.W.1  
Telephone: Whitehall 3938-9

20 Mount Street, MANCHESTER  
Telephone: Blackfriars 5014-5

746/3M

*Hunby & Connett, Printers, Middle Pavement, Nottingham.*