

FAULT FINDING

Symptom	Possible Fault	Cure
No light	No Lamp Faulty Lamp No Power	Fit Lamp Fit new lamp Check supply and spotlight cable
	Shutters Fully in Lamp chassis not seated	Extend shutters Remove and re-insert
Uneven Light	Lamp Adjustment knob moved	Check lamp adjustment
	Lamp not fully seated in holder	Check lamp in lampholder, observing safety precautions
	Reflector setting	Check

MAINTENANCE

Open lamp chassis observing safety precautions. Clean the reflector through the bottom of the lamphouse with the tube removed using a slightly damp cloth to which a little detergent has been added.

Lenses should be cleaned with a damp cloth only.

Periodic inspection should be carried out, of the lampholder and cable. Any components showing wear or damage should be replaced immediately. Contact your CCT representative for list of spare parts available.

CAUTION

Damaged lenses or UV safety screens MUST be replaced before luminaire is used.

(a) When replacing or adjusting a lamp, the product, with particular attention to all internal and external wiring, should be inspected and any faults corrected.

(b) At least once every twelve months the product, if portable, should be bench inspected for electrical and mechanical wear and damage. If not portable this inspection should be carried out in situ.

(c) Depending upon usage, internal and external wiring will deteriorate in time and should be replaced at the first indication of wear or aging.

(d) Product can be returned to any CCT service representative for repair and or maintenance. Spare and replacement parts can be supplied for use by other competent service

Finally ...

**CHECK CABLE AND PLUG FOR ANY SIGNS OF DAMAGE
REPLACE DAMAGED PARTS IMMEDIATELY.**

CCT Theatre Lighting Limited, is constantly developing, improving and changing its product line. All descriptions and specifications in this publication present only general particulars and shall not form any part of any contract. The right is reserved to change the specification without prior notification.

ACCESSORIES

ZS039 Fast Fit Lamphouse accessory
ZS040 Fast Fit Lens tube accessory
ZS041 Fast Fit 'X' Lens Tube accessory
Z0016 Drop-in Iris
Z0017N Bolt in Iris/Blackout
Z0120 Roto Gobo Holder
Z0121 Standard Gobo Holder
Z0013 Extra Colour Filter Frame for Z000N/P Lens Tubes
Z0014 Extra Colour Filter Frame for Z000Q/R/T/ Lens Tubes
Z0015 Extra Colour Filter Frame for Z000S/V Lens Tubes
Z0083 Hook Clamp
Z0085 Safety Chain
Y0057 Spigot

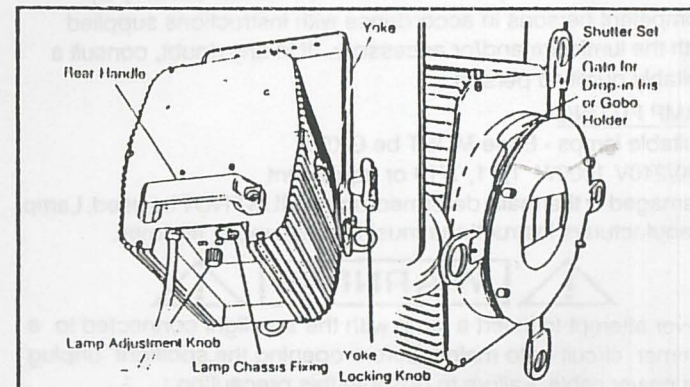
For complete details of colour change accessories suitable for the Silhouette Range see colour change data sheet.

CCT lighting

USER INFORMATION

Leaflet ref : W00A0

Jan '90



Silhouette Zoom Profile Spotlight

Base Down Lamp 1000/1200W

Order Code Z00A0 /N/P/Q/X/S/T/V

220/240V ONLY

WARNING - BEFORE USE :-

- Read CCT Lighting User Information General leaflet.
- Read these instructions.
- Inspect product for damage upon removal from its carton.
- Ensure that external supply wiring and socket (if to be used) is properly installed and protected.

THIS INFORMATION IS GIVEN IN THE BEST INTERESTS OF:

Safety, Handling, Installation, Use and Maintenance of products sold by CCT lighting.

Instructions relevant to each product will be found in the carton in which the product is supplied. They must be carefully read before any attempt is made to use and/or install the product. The instruction sheet should be retained for further reference. Additional copies are available on request.

In the UK, installers and users are obliged under the "Health and Safety at Work Act" to ensure that they are acquainted with information supplied with the product and are fully aware of any precautions that need to be taken.

CCT products are designed to conform to the requirements of UK law and to the requirements of relevant national and international standards.

CCT lighting

WINDSOR HOUSE, 26 WILLOW LANE, MITCHAM,
SURREY, CR4 4NA. UK. TEL: 081-640 3366
TELEX: 946648 FAX UK: 081-648 5263 FAX INT: 441-648 5263

SPECIAL NOTE

CCT products should not be modified. Any modification may render the product unsafe and will invalidate any safety/approval marks. CCT Theatre Lighting Limited, will not accept any responsibility for any damage caused as a result of their modification.

INSTALLATION

Installation of CCT products should be carried out only by competent persons in accordance with instructions supplied with the luminaire and/or accessory. If in any doubt, consult a suitably qualified person.

LAMP FITTING

Suitable lamps - Base MUST be GX9.5
220/240V 1000W T/11, T/19 or equivalent
Damaged or thermally deformed lamps MUST NOT be used. Lamp manufacturers instructions must be followed at all times.



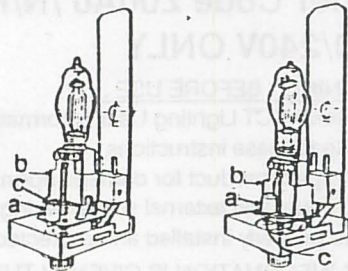
Never attempt to insert a lamp with the spotlight connected to a dimmer circuit or to mains. Before opening the spotlight unplug the power cable. Failure to observe this precaution:

MAY RESULT IN SEVERE BURNS.

Do not touch the lamp surface - use the disposable glove or shield provided with the new lamp when fitting it into the lampholder. When changing a recently failed lamp, allow time for the lamp and condenser lens to cool before removing it from the spotlight.

When supplied the lampholder is set for use with a 1000W lamp order to re-set for 1200 Watt lamp adjust as follows.

Remove screws and spacers (a). Lift lampholder (b). Re-fit lampholder fixing screws with spacers below lampholder fixing slots (c).



1000W Lampholder setting 1200W Lampholder setting

Note that lampray slide is engraved with centre line. Always ensure that centre of lamp filament to be used coincides with this mark. If it does not, reset lampholder as instructed above.

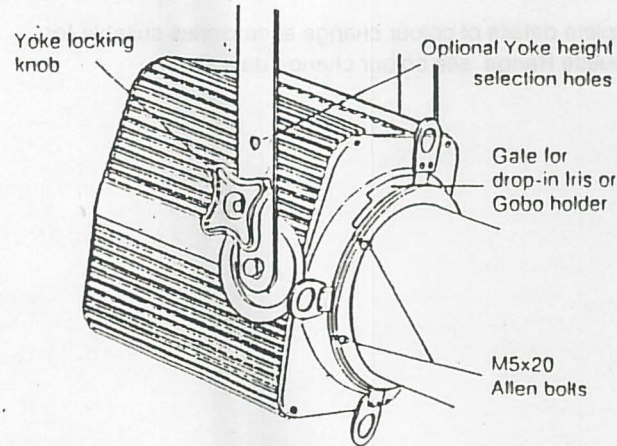
LAMPHOUSE

The Silhouette Z00A0 base down lamp 1000/1200W lamphouse lamphouse is part of a range which includes :-
Z00F0 1000W Axial lamp lamphouse
Z00D0 2500W Base Down Lamphouse
Z00B0 2000W Base Down Lamphouse

Beam Tilt Angle 90° - 0 - 70°

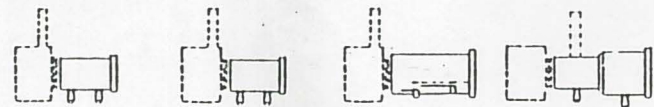
FITTING LENS TUBE

- (a) Select desired tube.
- (b) Decide whether lens knob/s are to be above or below tube when in use (except 'X' tube)
- (c) Attach tube to lamphouse with 4 off M5x20 Allen bolts and key provided.
- (d) Decide whether front colour frame/ accessory cassette is to be arranged for top or side entry. Adjust as necessary with 4 off M5x8 screws holding cassette to lens tube.
- (e) Suspension Yoke should be attached :-
With Z000N, Z000P and Z000X Tubes to the lamphouse. With other tubes directly to the tube via support bracket. Select for best balance. Note that Yoke has optional holes for height selection.

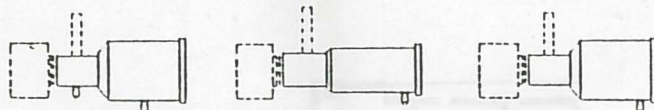


The Z00017N Iris Blackout, when used, is located behind the shutter set.

LENS TUBES



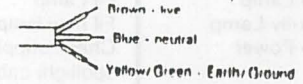
Z000N 40 31°-47° Zoom Z000P 30 19°-40° Zoom Z000X 15-32 15°-32° Zoom Z000Q 15 13°-23° Zoom



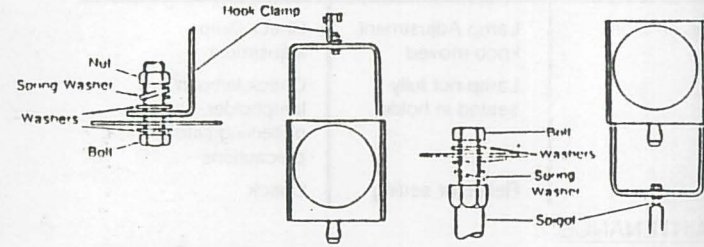
Z000S 10 9°-21° Zoom Z000T 8 8° Non-Zoom Z000V 5 5° Non-Zoom

FITTING PLUG

A suitable plug of at least 15A (220/240V) rating should be fitted to the spotlight power cable, observing the connection colour code as follows:



MOUNTING



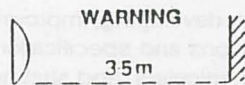
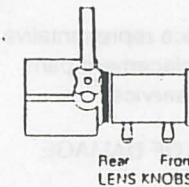
LUMINAIRE MAXIMUM SURFACE TEMPERATURE (MST)

Maximum at steady state 160°C to 45°C

FOCUS AND LAMP ADJUSTMENT

- With the exception of Z000T and Z000V the lens system allows variable zoom beam spread and should be used to set the required beam size, before trimming with the shutters or the iris.
- (a) With shutters/iris fully open slacken lens knobs and slide adjust to maximum acceptable beam size/hardness. Tighten lens knobs. (With a new lamp, socket support trim screws should be adjusted to centralise filament.
- (b) By means of shutters/iris adjust gate size as required.
- (c) If a Gobo is being projected, lenses and shutters can be trimmed for image size and definition. (see also d.)
- (d) Trim lens and reflector settings for optimum performance* by adjusting control knobs. Ensure they are fully finger tightened when setting has been completed.

* Peaky or flat field, Minimum/maximum brightness, Soft/hard focus



Minimum distance from lighted object with 10° lens (worst situation)

