

**PHILIPS**

# Strand Lighting

250ML Lighting Control Console  
Fixture Library Creator Software



User's Guide

## Philips Strand Lighting Offices

### Philips Strand Lighting - Dallas

10911 Petal Street  
Dallas, TX 75238  
Tel: +1 214-647-7880  
Fax: +1 214-647-8030

### Philips Strand Lighting - Auckland

19-21 Kawana Street  
Northcote, Auckland 0627  
New Zealand  
Tel: +64 9 481 0100  
Fax: +64 9 481 0101

### Philips Strand Lighting - Asia

Unit C, 14/F, Roxy Industrial Centre  
No. 41-49 Kwai Cheong Road  
Kwai Chung, N.T., Hong Kong  
Tel: +852 2796 9786  
Fax: +852 2798 6545

### Philips Strand Lighting - Europe

Rondweg zuid 85  
Winterswijk 7102 JD  
The Netherlands  
Tel: +31 (0) 543-542516

### Website:

[www.strandlighting.com](http://www.strandlighting.com)

The material in this manual is for information purposes only and is subject to change without notice. Philips Strand Lighting assumes no responsibility for any errors or omissions which may appear in this manual. For comments and suggestions regarding corrections and/or updates to this manual, please contact your nearest Philips Strand Lighting office.

El contenido de este manual es solamente para información y está sujeto a cambios sin previo aviso. Philips Strand Lighting no asume responsabilidad por errores o omisiones que puedan aparecer. Cualquier comentario, sugerencia o corrección con respecto a este manual, favor de dirigirlo a la oficina de Philips Strand Lighting más cercana.

Der Inhalt dieses Handbuches ist nur für Informationszwecke gedacht, Aenderungen sind vorbehalten. Philips Strand Lighting uebernimmt keine Verantwortung für Fehler oder Irrtuemer, die in diesem Handbuch auftreten. Für Bemerkungen und Verbesserungsvorschlaege oder Vorschlaege in Bezug auf Korrekturen und/oder Aktualisierungen in diesem Handbuch, moechten wir Sie bitten, Kontakt mit der naechsten Philips Strand Lighting-Niederlassung aufzunehmen.

Le matériel décrit dans ce manuel est pour information seulement et est sujet à changements sans préavis. La compagnie Philips Strand Lighting n'assume aucune responsabilité sur toute erreur ou omission inscrite dans ce manuel. Pour tous commentaires ou suggestions concernant des corrections et/ou les mises à jour de ce manuel, veuillez s'il vous plait contacter le bureau de Philips Strand Lighting le plus proche.

---

**Note:** Information contained in this document may not be duplicated in full or in part by any person without prior written approval of Philips Strand Lighting. Its sole purpose is to provide the user with conceptual information on the equipment mentioned. The use of this document for all other purposes is specifically prohibited.

---

Document Number: **Fixture Library Creator Software User's Guide**

Version as of: **01 May 2013**

250ML Lighting Control Console Fixture Library Creator Software User's Guide

©2013 Philips Group. All rights reserved.

## IMPORTANT INFORMATION

---

### Additional Resources for DMX512

For more information on installing DMX512 control systems, the following publication is available for purchase from the United States Institute for Theatre Technology (USITT), "Recommended Practice for DMX512: A Guide for Users and Installers, 2nd edition" (ISBN: 9780955703522). USITT Contact Information:

**USITT**  
**315 South Crouse Avenue, Suite 200**  
**Syracuse, NY 13210-1844**  
**Phone: 1.800.938.7488 or 1.315.463.6463**  
**www.usitt.org**

### Fixture Creator Software End User License Agreement

The Fixture Creator Software (software) is Copyright 2013 Philips Strand Lighting. All rights reserved. This software may not, in whole or in any part, be copied, reproduced, transmitted, translated (into any language, natural or computer), stored in a retrieval system, reduced to any electronic medium or machine readable format, or by any other form or means without prior consent, in writing, from Philips Strand Lighting.

You are granted a limited license to use this software. The software may be used or copied only in accordance with the terms of that license, which is described in the following paragraphs.

"THE SOFTWARE" SHALL BE TAKEN TO MEAN THE SOFTWARE CONTAINED IN THIS PACKAGE OR AS AVAILABLE FROM PHILIPS STRAND LIGHTING WEB SITE AND ANY SUBSEQUENT VERSIONS OR UPGRADES RECEIVED AS A RESULT OF HAVING BEEN DOWNLOADED, EITHER VIA PHILIPS STRAND LIGHTING'S WEB SITE OR OTHER ELECTRONIC MEANS, BY USER PURCHASED THIS PACKAGE. "USER" SHALL BE TAKEN AS THE ORIGINAL USER OF THE SOFTWARE.

USER HAS THE NON-EXCLUSIVE RIGHT TO USE THE SOFTWARE ONLY ON A SINGLE COMPUTER. USER MAY NOT ELECTRONICALLY TRANSFER THE PROGRAM FROM ONE COMPUTER TO ANOTHER OVER ANY TYPE OF NETWORK. USER MAY NOT DISTRIBUTE COPIES OF THE SOFTWARE OR THE ACCOMPANYING DOCUMENTATION TO OTHERS EITHER FOR A FEE OR WITHOUT CHARGE. USER MAY NOT MODIFY OR TRANSLATE THE PROGRAM OR DOCUMENTATION.

USER MAY NOT DISASSEMBLE THE PROGRAM OR ALLOW IT TO BE DISASSEMBLED INTO ITS CONSTITUENT SOURCE CODE.

USER'S USE OF THE SOFTWARE INDICATES HIS/HER ACCEPTANCE OF THESE TERMS AND CONDITIONS. IF USER DOES NOT AGREE TO THESE CONDITIONS, RETURN THE DISTRIBUTION MEDIA, DOCUMENTATION, AND ASSOCIATED MATERIALS TO THE VENDOR FROM WHOM THE SOFTWARE WAS ACQUIRED, AND ERASE THE SOFTWARE FROM ANY AND ALL STORAGE DEVICES UPON WHICH IT MAY HAVE BEEN INSTALLED.

THIS LICENSE AGREEMENT SHALL BE GOVERNED BY THE LAWS OF THE UNITED STATES OF AMERICA, IN THE STATE OF TEXAS AND SHALL INURE TO THE BENEFIT OF PHILIPS STRAND LIGHTING OR ITS ASSIGNS.

**DISCLAIMER / LIMITATION OF LIABILITY: USER ACKNOWLEDGES THAT THE SOFTWARE MAY NOT BE FREE FROM DEFECTS AND MAY NOT SATISFY ALL OF USER'S NEEDS. PHILIPS STRAND LIGHTING DOES NOT WARRANT THE SOFTWARE IN ANY FASHION OR FOR A SPECIFIC PURPOSE OR MERCHANTABILITY FOR A SPECIFIC USE. USER USES THE SOFTWARE AT HIS OR HER OWN RISK AND ASSUMES ALL RISKS ASSOCIATED WITH, INCLUDING BUT NOT LIMITED TO, DOWNLOADING, INSTALLING, USING, OR TRYING TO USE THE SOFTWARE.**

USE. THE SOFTWARE AND ANY ACCOMPANYING WRITTEN MATERIALS ARE LICENSED "AS IS". USER'S EXCLUSIVE REMEDY DURING THE WARRANTY PERIOD SHALL CONSIST OF REPLACEMENT OF DISTRIBUTION MEDIA IF DETERMINED TO BE FAULTY. IN NO EVENT WILL PHILIPS STRAND LIGHTING BE LIABLE FOR DIRECT, INDIRECT, INCIDENTAL OR CONSEQUENTIAL DAMAGE OR DAMAGES RESULTING FROM LOSS OF USE, OR LOSS OF ANTICIPATED PROFITS RESULTING FROM ANY DEFECT IN THE SOFTWARE, EVEN IF IT HAS BEEN ADVISED OF THE POSSIBILITY OF SUCH DAMAGE. SOME LAWS DO NOT ALLOW THE EXCLUSION OR LIMITATION OF IMPLIED WARRANTIES OR LIABILITIES FOR INCIDENTAL OR CONSEQUENTIAL DAMAGES, SO THE ABOVE LIMITATIONS OR EXCLUSION MAY NOT APPLY.

# TABLE OF CONTENTS

Philips Strand Lighting Offices ..... Inside Front Cover

**IMPORTANT INFORMATION**

    Additional Resources for DMX512..... 1

    Fixture Creator Software End User License Agreement ..... 1

**TABLE OF CONTENTS**

**PREFACE**

    About this Guide..... 2

**INSTALLATION**

    Installing Software on a Computer ..... 2

**OPERATION**

    Launch Software..... 4

    Fixture Setup..... 4

    Linear Attributes - Channel Name..... 5

    Linear Attributes - Default Value ..... 6

    Linear Attributes - Attribute Group..... 7

    Non-Linear Attributes - Channel Information..... 7

## PREFACE

### About this Guide

This Fixture Library Creator Software User's Guide will demonstrate how to create a multi-parametered fixture for 250ML Lighting Control Consoles using the Fixture Library Creator Software.

The Fixture Library Creator Software is available for download - at no charge - from the 250ML Lighting Control Console product downloads page on the Philips Strand Lighting web site at [www.strandlighting.com](http://www.strandlighting.com).

## INSTALLATION

### Installing Software on a Computer

Before you can install and use the 250ML Fixture Creator Software, you must go to the 250ML console product downloads section on the Philips Strand Lighting web site at [www.strandlighting.com](http://www.strandlighting.com) and download the latest version of the 250ML Fixture Creator Software(250ML\_FLC\_VX.XX.zip).

**Note:** The graphics in this section appears in Microsoft Windows XP operating system. Your graphics may appear differently, but the essential information is the same.

#### To install the 250ML Fixture Creator Software on a computer:

- Step 1. After downloading the software from the Philips Strand Lighting web site (as described above), unzip the downloaded file.
- Step 2. Double click on the Setup file icon (setup.exe file) to launch the setup program. You may see this warning:

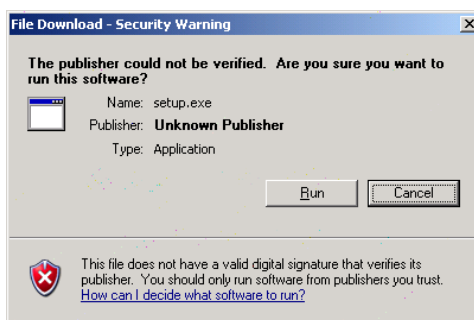
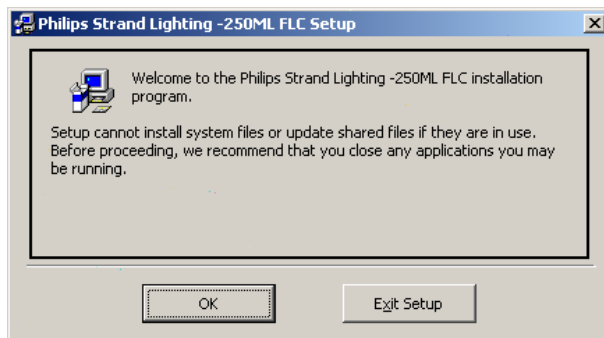


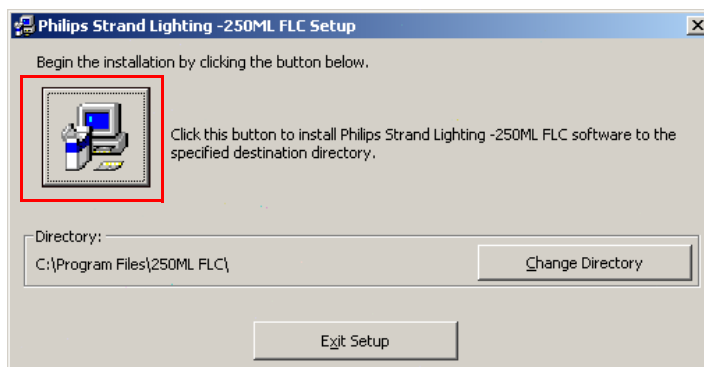
Figure 1: Setup - Security Warning

- Step 3. Click Run.
- Step 4. Follow the steps to install the software.
  - a. On this screen, click OK.



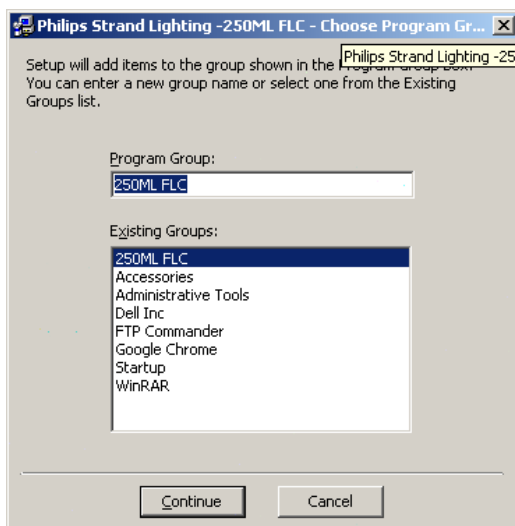
**Figure 2: Setup Screen**

- b. On this screen, click the computer icon as indicated by the red box. If you want the directory to be a different name, click Change Directory.



**Figure 3: Setup Screen - Directory Location**

- c. The program will begin installation. On this screen, click Continue.



**Figure 4: Setup Screen - Program Group Name**

---

**Note:** If this prompt appears for Active X, follow the recommendation in the dialog box.

---

d. After successful installation, this message will appear.



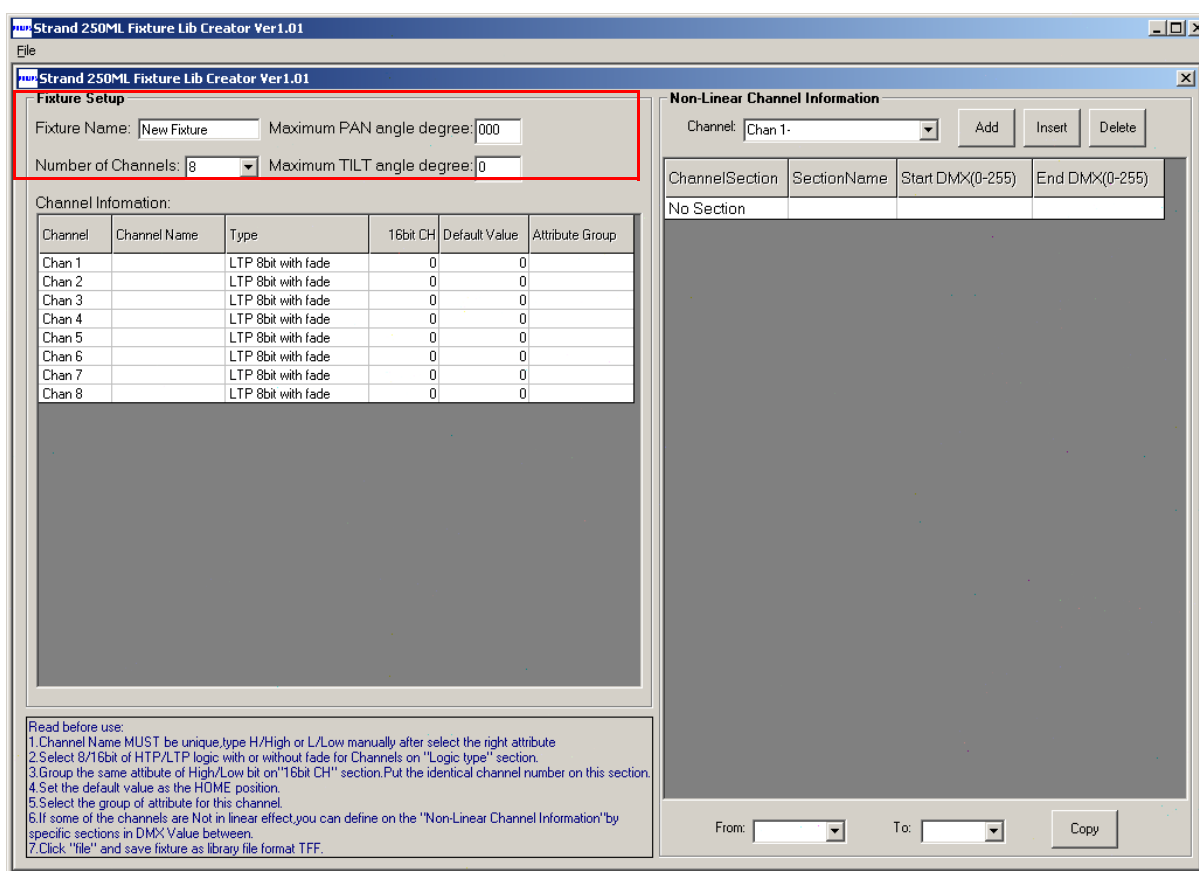
**Figure 5: Setup Screen - Installation Complete Dialog box**

The software is loaded and ready for use.

## OPERATION

### Launch Software

Got to Start menu, Programs and launch the 250ML Fixture Creator Software. The screen below shall appear.



**Figure 6: Launch Program - Initial Setup Screen**

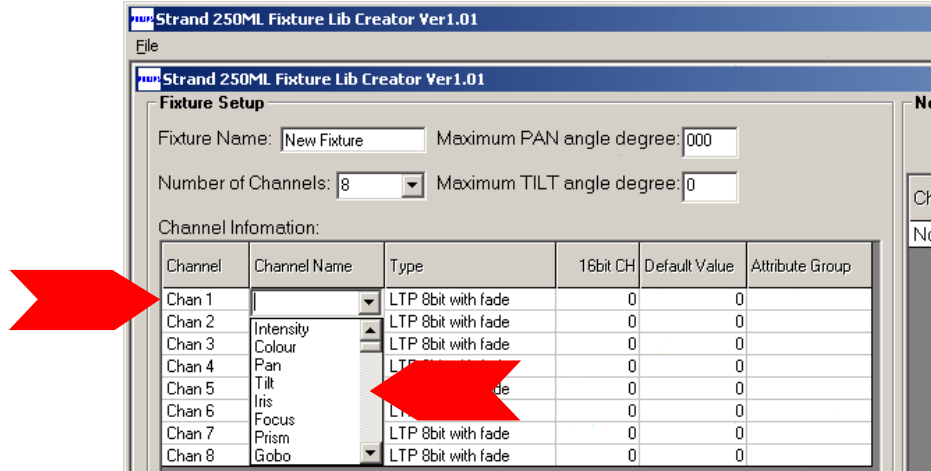
### Fixture Setup

As indicated in the Red Box in **Figure 6**, enter Fixture Setup information as follows:

Parameter	Meaning / Action
Fixture Name	Input the name of the fixture
Maximum PAN angle degree	Input the maximum pan rotation the fixture can achieve in degrees.
Number of Channels	Input the total number of DMX channels for the fixture mode.
Maximum TILT angle degree	Input the maximum tilt rotation the fixture can achieve in degrees.

### Linear Attributes - Channel Name

As indicated in **Figure 7**, enter Channel (Linear Attribute) information for each Channel Name - The name of the parameter - by selecting the attribute name from the pull down list.



**Figure 7: Linear Attributes - Channel Name**

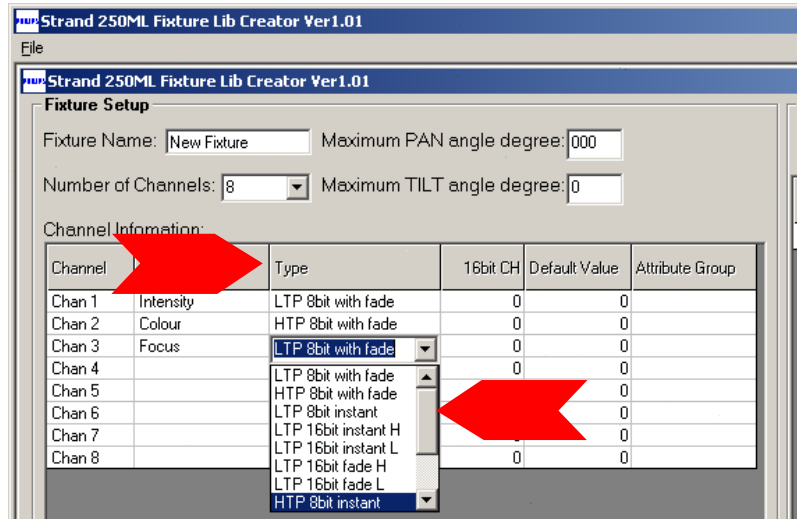
- Step 1. Click the DOWN arrow (on pulldown list) to show all available channel names.
- Step 2. Scroll through the list to find the most appropriate channel name for the defined DMX channel.
- Step 3. Select the appropriate channel name.



**Note:** Users are allowed to add a custom channel name to the existing list. However, the first channel of Pan / Tilt must select from existing parameters for mapping purposes. Custom channel names are *NOT* allowed for the first channel of Pan/Tilt or the fixture will not operate properly.

### Linear Attributes - Channel Type

You can define the HTP (Highest Takes Precedence) setting. HTP means that the item giving the parameter the highest value wins.



**Figure 8: Linear Attributes - Channel Type (HTP)**

**Note:** When setting up 16 bit parameters like Pan, the first channel will have the channel name of Pan with the Type: LTP 16bit fade H. The second channel will have channel name of PanFine with the Type: LTP 16bit fade L.

### Linear Attributes - 16 bit Channel

When the fixture has attribute pairs, then use the 16 bit Channel info to identify the link between the two channels. If two channels are 16 bit channels of the same item (like 16 bit Pan where there is a Course and Fine channel) then select Pan for the first channel, PanFine for the second channel. Set the 16bit CH value for the Pan to be 2 and set the 16bit CH value for the PanFine to be 1. This will link the two together.

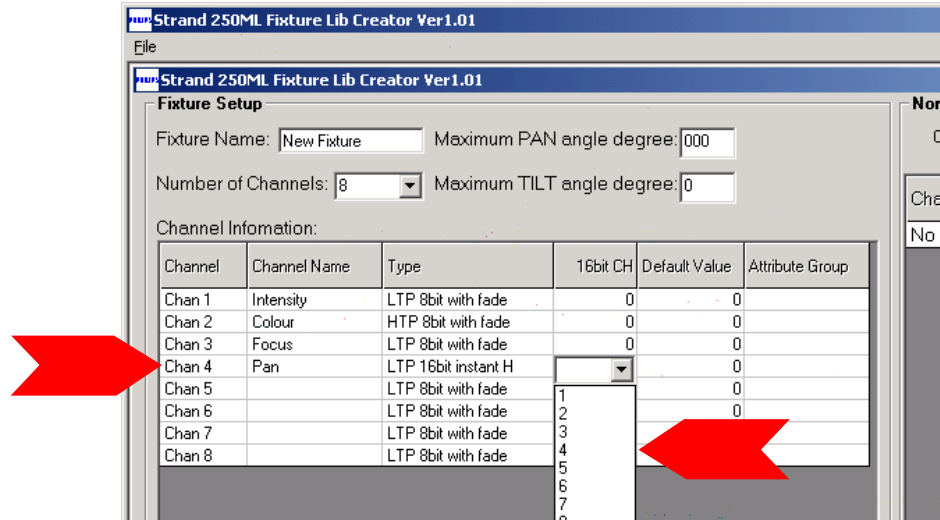


Figure 9: Linear Attributes - 16 bit Channel

### Linear Attributes - Default Value

As indicated in Figure 10, this parameter is the *default* or home position in which the fixture will start.

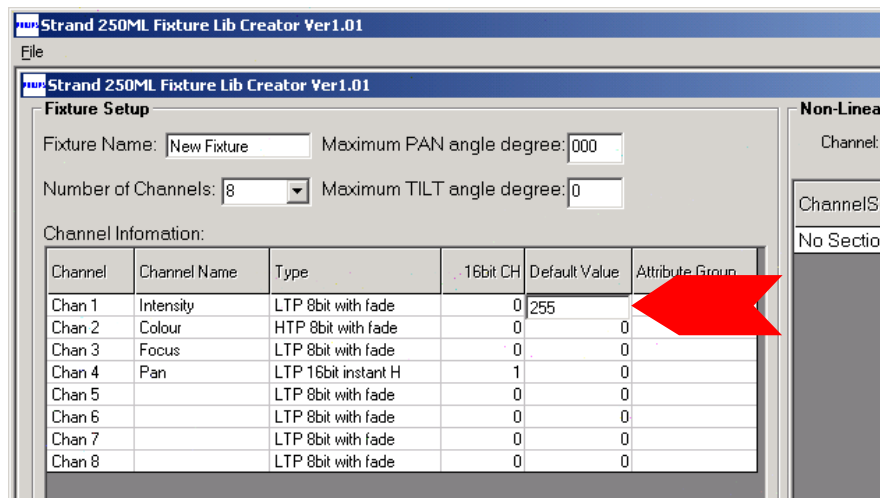


Figure 10: Linear Attributes - Default Value



### Linear Attributes - Attribute Group

This parameter defines the attribute family grouping of the attribute (assigned to the channel) will be assigned to. As indicated in **Figure 11**, the options are Dimmer, Position, Color and Beamshape.

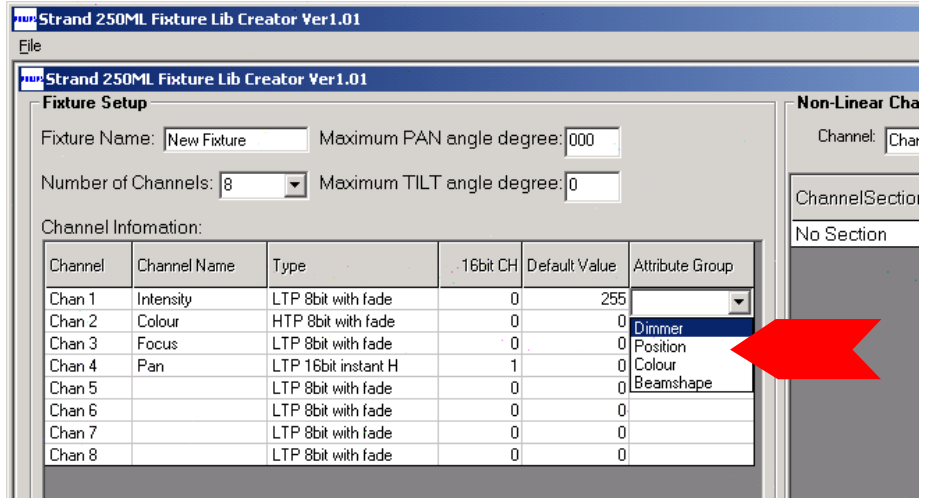


Figure 11: Linear Attributes - Default Value

### Non-Linear Attributes - Channel Information

For any channel that is not simply a linear numerical value, non-linear channel step information can be entered as illustrated in **Figure 12**. An example of this would be a color or gobo wheel.

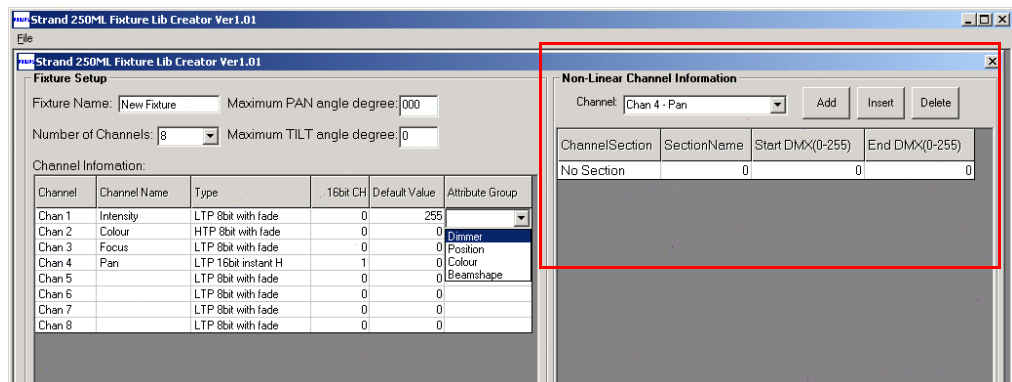


Figure 12: Non-Linear Attributes - Channel Information

### Add, Delete, or Insert

To add, insert or delete non-linear attribute channel information:

Step 1. As shown in **Figure 13**, select a channel from the Channel pulldown menu.

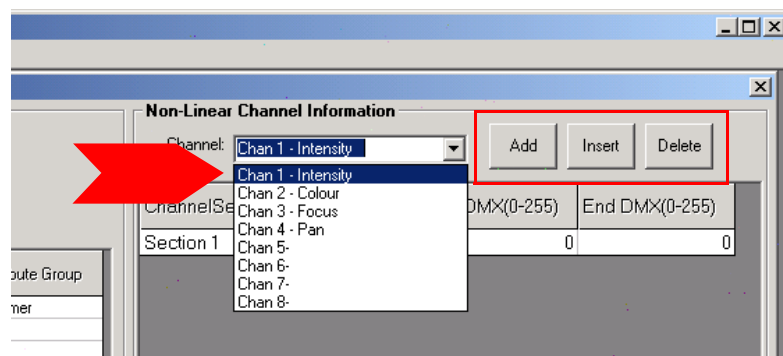
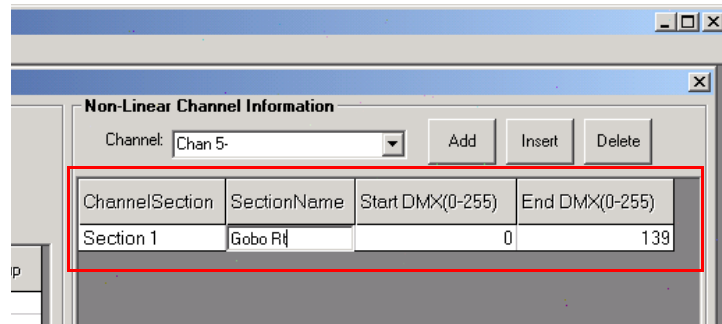


Figure 13: Non-Linear Attributes - Add, Delete, or Insert Channel Information

Step 2. Select "Add", "Insert" or "Delete" to create the total number of steps needed for the selected channel

### Section Name, Start DMX, and End DMX Settings

Sections are the steps that are available within the attribute. This could be, for example, gobo slots on a gobo wheel.



**Figure 14: Section Name, Start DMX, and End DMX Settings**

- Use the Section Name to apply the gobo name.
- Insert the Starting DMX address to activate the selected step or section.
- Insert the Ending DMX address to finish the selected step or section.

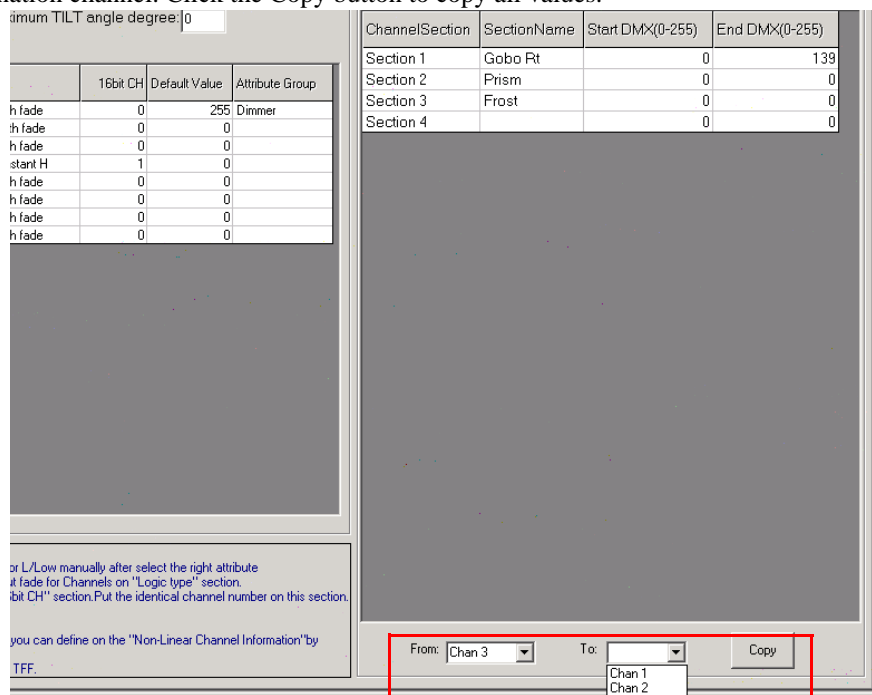


**Note:** All DMX values have to be unique and appear in only one step or section.

### Copy Function

The Copy function allows you to copy all section settings from one channel to another.

The From channel is the channel that has the content created. The To channel is the channel receiving the existing data or the destination channel. Click the Copy button to copy all values.



**Figure 15: Section Name, Start DMX, and End DMX Settings**

When all parameters are set, select File and Save Fixture to store your created fixture in your fixture library on a hard drive or USB drive. Now try it out on your console and enjoy the intelligent fixture control that has just been built!



**WARNING!** You must save your work before exiting the program. *You will not be prompted to save your work.* If you exit before you save your new fixture library, you file will not be saved.

## Notes



**PHILIPS**

# Strand Lighting

Dallas  
10911 Petal Street  
Dallas, TX 75238  
Tel: +1 214-647-7880  
Fax: +1 214-647-8031

Hong Kong  
Unit C, 14/F, Roxy Industrial Centre  
No. 41-49 Kwai Cheong Road  
Kwai Chung, N.T., Hong Kong  
Tel: +852 2796 9786  
Fax: +852 2798 6545

Auckland  
19-21 Kawana Street  
Northcote, Auckland 0627  
New Zealand  
Tel: +64 9 481 0100  
Fax: +64 9 481 0101

Europe  
Rondweg zuid 85  
Winterswijk 7102 JD  
The Netherlands  
Tel: +31 (0) 543-542516

[www.strandlighting.com](http://www.strandlighting.com)

©2013 Philips Group