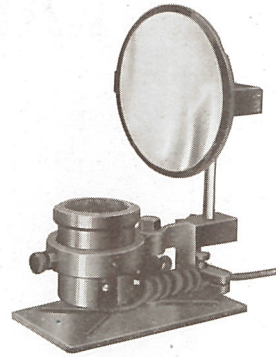


STRAND ACCESSORIES

HALF WATT TRAY

L 229 As illustration, aluminium castings, finished matt black. G.E.S. black china holder, carried in ring adjustments, provided to give vertical and axial adjustment for lamp filament. 5 in. diameter chromium-plated spherical reflector and adjustable cradle. Removable focussing knob under.

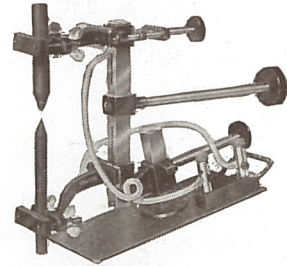
PRICE ... £1 10 0



SPHERICAL REFLECTORS (Chromium Plated)

These are supplied separately, complete with the necessary cradles and adaptors, to fit lanterns supplied previous to October, 1935.

	PRICE	s.	d.	
L 230 6" diameter for 2000 watt Spot	17	3		each
L 231 5" diameter for Pattern 43	13	9		„
L 232 5" diameter for Pattern 44	13	9		„
L 233 3½" diameter for Pattern 45	7	3		„



ARC LAMP

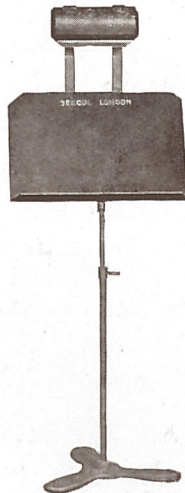
L 234 15/20 amp. 2-movement hand feed, carried on tray with removable focussing knob under. Rockbestos wiring to pair of terminals.

PRICE ... £4 17 6

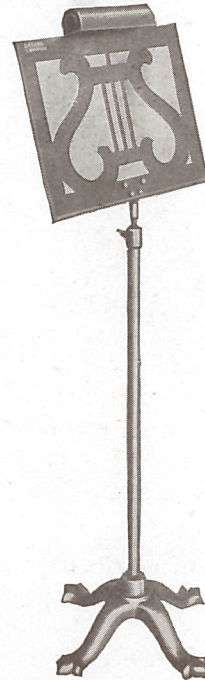


Cinema Pattern

ORCHESTRA STANDS



Standard Pattern



Lyre Pattern

Made up of sheet metal, mounted on telescopic stand, with cast iron base.

L116 Cinema Pattern. Finished black, and fitted with two lampholders. Minimum height, 52 in. Maximum, 61 in. (Nett weight, 26 lbs.)	£	s.	d.	each
L117 Standard Pattern. Finished black, and fitted with lampholder. Minimum height, 51 in. Maximum, 75 in. (Nett weight, 19 lbs.)	1	12	6	„
L118 Lyre Pattern. Finished gilt, and fitted with two lampholders. Minimum height, 60 in. Maximum, 78 in. (Nett weight, 20 lbs.)	2	17	6	„