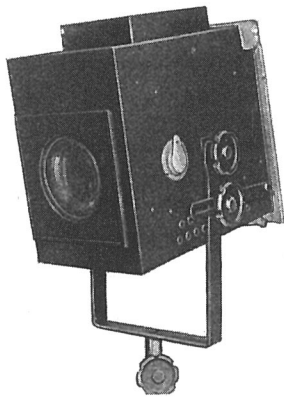


STRAND EFFECTS LIGHTING

PATTERN 33 OPTICAL EFFECTS ARC PROJECTOR 20—40 Amps.



An inexpensive general purpose arc effects lantern for stage use.

SPECIFICATION

Double cased lantern, asbestos lined, constructed in heavy gauge plished steel, efficiently ventilated. Fitted with 5 in. diameter double plano-convex condenser. Tilting fork and quadrant with 3 in. diameter locking wheels. Runner to take all standard optical effects attachments. Asbestos curtain at rear. Removable handle.

ARC.—Three-movement 20/30 amp. hand feed, carried on sliding tray with locking screw underneath. Rockbestos wiring to pair of connection terminals.

PRICE (complete with Arc Lamp) ... £12 0 0

F 66 Heavy pattern telescopic stand (minimum height 4 ft. 3 in., maximum 7 ft. 0 in.) £1 7 6 each

For suitable Resistance, see page 46.

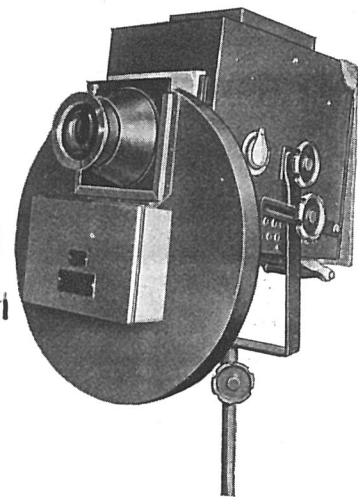
D.C. CARBONS (prices see page 106). 11

20/30 amps. 16 m/m Positive (Cored). 9 m/m Negative (Solid). Not 19
Arc Volts 46. 2 5

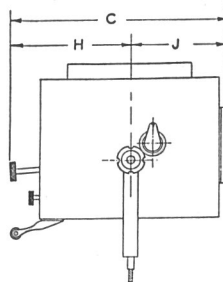
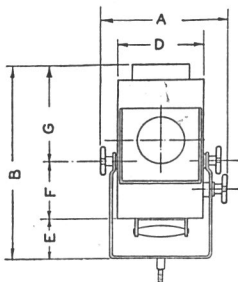
30/40 amps. 20 m/m Positive (Cored). 12 m/m Negative (Solid). Not 19
Arc Volts 50.

A.C. CARBONS.

13 m/m diameter White Flame. Arc Volts 25.



Pattern 33 with Cloud Effect



PATTERN 33

	Ft.	In.
A	1	1 1/2
B	1	8
C	1	9 1/2
D		9 1/4
E		4
F		6
G		10
H		11 1/2
J		10

Nett weight of Lantern, 38 lbs.

Telephone :
Temple Bar 7464 (6 lines).

STRAND ELECTRIC
AND ENGINEERING CO., LTD.
FLORAL STREET, COVENT GARDEN, W.C.2

Telegraphic Address :
Spotlite, Rand, London.