

STRAND ARC SPOTLIGHTS

PATTERN 22 FRONT OF HOUSE SPOTTING ARC 30—40 Amp.

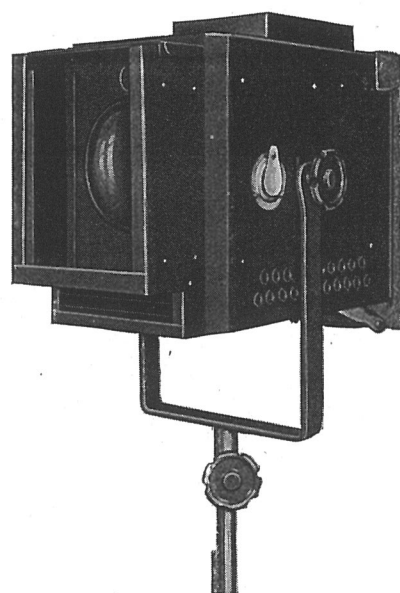
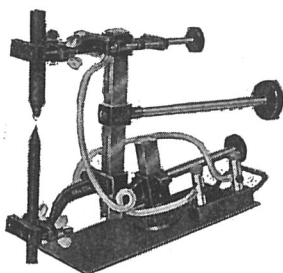
This lantern is a good general purpose arc, suitable for spotting and following artists on throws up to 70 ft. long.

SPECIFICATION

Double cased lantern, asbestos lined, constructed in heavy gauge planished steel, efficiently ventilated. Fitted with 6" diameter 9" focus heat-resisting lens. Tilting fork and quadrant with 3" diameter locking wheels. Colour runners on front to take three millboard colour frames. Asbestos rear screen. Blackout shutter, operated by knob at rear.

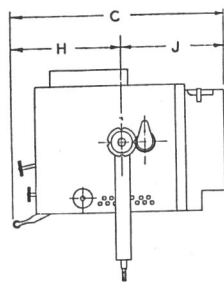
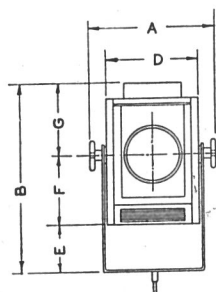
ARC LAMP.—3-movement hand feed, carried on sliding tray, rack and pinion focussing. Rockbestos wiring to pair of connection terminals.

PRICE ... £13 0 0



		£	s.	d.
D 119	Linen-bound millboard colour frames (10 $\frac{3}{4}$ " x 7 $\frac{1}{2}$ ")	0	7	6 per doz.
D 120	Ditto, with assorted gelatines	0	10	0 "
D 121	Ditto, with assorted "Chromoid" colours	1	2	6 "
D 66	Heavy pattern telescopic stand (minimum height 4' 3", minimum 7' 0")	1	7	6 each
D 113	Flange plate stand, 6" high	0	3	6 "
D 104	Iris diaphragm	2	12	0 "

Suitable Resistances (see page 45)



PATTERN 22		PATTERN 22		PATTERN 22	
	Ft. Ins.		Ft. Ins.		Ft. Ins.
A	1 2	D	9 $\frac{1}{2}$	G	8
B	1 8 $\frac{1}{2}$	E	6	H	11
C	1 10	F	6 $\frac{1}{2}$	J	11

Nett weight of lantern, 32 lbs.

D.C. CARBONS (Prices see page 106).

16
25-30 amp. 18 m/m diameter Positive (cored).
11 10 m/m diameter Negative (solid). No 19
40-50 amp. 20 m/m diameter Positive (cored).
12 m/m diameter Negative (solid). No 19.

Arc Volts, 50.

A.C. CARBONS. (Prices see page 106)

30-35 Amp. 13 m/m White Flame.

35-40 Amp. 14 m/m White Flame.

Arc Volts, 25-28.

PATTERN 42 COMBINED SPOTTING & OPTICAL EFFECTS LANTERN

Specification and external appearance as Pattern 22 above, but fitted with auxiliary lens and effects runner, enabling it to carry the effects attachments listed on page 58.

PRICE (complete with two 6" x 8" Heat-resisting Lenses) ... £15-15-0

Accessories, see above.

Telephone :
Temple Bar 7464 (6 lines).

**STRAND ELECTRIC
AND ENGINEERING CO., LTD.**
FLORAL STREET, COVENT GARDEN, W.C.2

Telegraphic Address :
Spotlite, Rand, London.