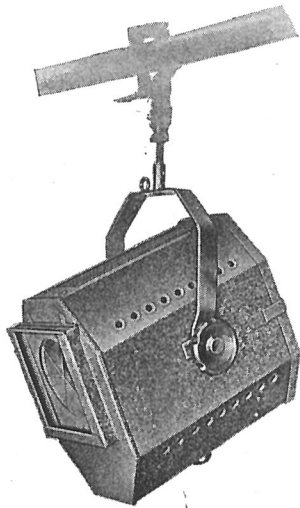


STRAND FOCUS LANTERNS

PATTERN 44 BABY SPOT, 500 Watt



This spotlight is suitable for a multitude of situations on the stage proper, while for small amateur stages they may be used as F.O.H. focus lamps.

SPECIFICATION

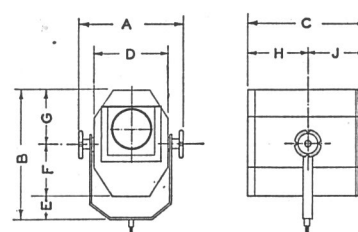
Lantern constructed in sheet steel, efficiently ventilated. Access to lamp by hinged door at rear. $4\frac{1}{2}$ in. diameter, $6\frac{1}{2}$ in. focus plano-convex lens. Type 43 tray, giving vertical and axial adjustment for lamp filament, complete with spherical chromium-plated reflector. Focusing by knob under lantern. Runner to take millboard colour frame on front, hinged flap and clip on top. Rockbestos tails, tilting fork and 3 in. diameter locking wheels. Finish: black crystalline enamel outside, matt black inside.

PRICE (exclusive of Lamp) ... ~~£3 10 0~~ ⁴⁻¹⁵⁻⁰

							£	s.	d.
C 80	Linen bound millboard colour frames (6 in. x 6 in.)	6-0	per doz.	6-9
C 81	Ditto, with assorted gelatines	8-0	"	9-0
C 82	Ditto, with assorted "Chromoid" colours (see page 98)	10-0	"	11-0
C 83	Spotting attachment with four masks ($3\frac{1}{2}$ lbs.)	2-0-0	each	2-7-6
C 64	Safety chain with snap hook	2-0	"	2-3
C 84	Adjustable barrel clamp (as illustrated)	5-6	"	7-6
C 65	"L" clamp for $1\frac{1}{2}$ in. barrel...	2-6	"	2-9
C 79	Swivel arm bracket	7-6	"	12-6

Lamp: 500 watt Class A I Tubular or Class B¹ Round Bulb Projector. G.E.S. Cap (see page 103). *195-0*

Beam Angle: Maximum 39° , Minimum $11\frac{1}{2}^\circ$.
Effective throw 25 ft.



DIMENSIONS. PATTERN 44

	Ft.	In.		Ft.	In.
A	...	$11\frac{1}{2}$	F	...	$5\frac{1}{2}$
B	...	$2\frac{1}{2}$	G	...	$6\frac{1}{2}$
C	...	$1\frac{1}{2}$	H	...	$6\frac{1}{2}$
D	...	8	J	...	$6\frac{1}{2}$
E	...	$2\frac{1}{2}$			

Nett weight of Lantern, 18 lbs.

Telephone:
Temple Bar 7464 (6 lines).

STRAND ELECTRIC
AND ENGINEERING CO., LTD.
FLORAL STREET, COVENT GARDEN, W.C.2

Telegraphic Address:
Spotlite, Rand, London.