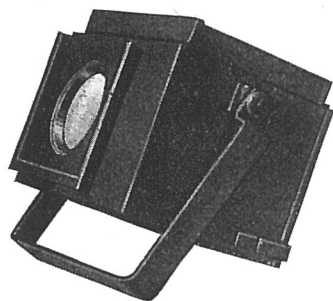


STRAND FOCUS LANTERNS

PATTERN 27 FLOAT SPOT 100 or 250 Watt



This is a small compact spotlight which may, owing to its size, be concealed in footlights, stage furniture, prop fires, etc.

SPECIFICATION

Lantern constructed in sheet steel, efficiently ventilated. Access to lamp by hinged door at rear. 3 in. diameter, 6 in. focus plano-convex lens. Type 27 tray, giving variation in size of spot, axial adjustment for filament. Runners to take millboard colour frame on front. Rockbestos tails. Finish: black crystalline enamel outside, matt black inside.

PRICE (exclusive of Lamp) ... ~~£2-0-0~~ ²⁻⁷⁻⁶

C 73 Linen bound millboard colour frames ($4\frac{3}{8}$ in. x $4\frac{3}{8}$ in.) ... 4s. 0d. per doz. 4-6
C 74 Ditto, with assorted gelatines ... 6s. 0d. " 6-6

Lamp: 100 or 250 watt Class B.I Round Bulb Projector. E.S. Cap. (see page 103). ^{9-7-12/6}

Beam Angle: Maximum 49°. Minimum 22°.

Effective throw, 15 ft.

PATTERN 45 MINIATURE SPOT 250 Watt

This is a small spotlight which, owing to an increase in size compared to the Pattern 27, gives a more efficient light, and greater range of focussing. Suitable for small stages, exhibition displays, and stands.

SPECIFICATION

Lantern constructed in sheet steel, efficiently ventilated. Access to lamp by hinged door at rear. $4\frac{1}{2}$ in. diameter, $6\frac{1}{2}$ in. focus plano-convex lens. Type 45 tray, giving axial adjustment for filament, complete with spherical chromium-plated reflector. Focussing by knob under lantern. Runner to take millboard colour frame on front. Rockbestos tails. Finish: black crystalline enamel outside, matt black inside.

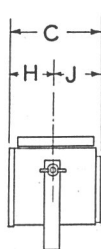
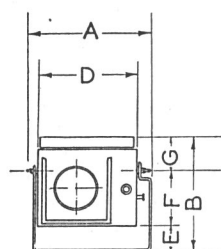
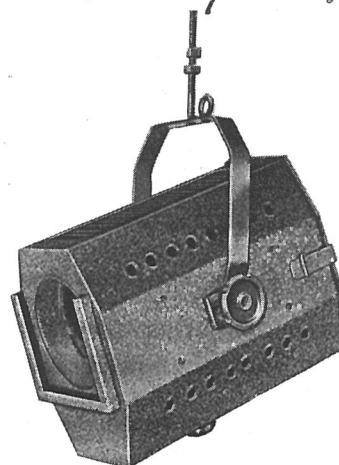
PRICE (exclusive of Lamp) ... ~~£2-15-0~~ ³⁻¹⁰⁻⁶

C 76 Linen bound millboard colour frames ($5\frac{5}{8}$ in. x $5\frac{1}{4}$ in.) ... 5s. 0d. per doz. 5-6
C 77 Ditto, complete with assorted gelatines ... 7s. 0d. " 7-9
C 78 Ditto, complete with assorted "Chromoid" colours ... 9s. 3d. " 9-4
C 64 Safety chain with snap hook ... 2s. 0d. each 2-3
C 79 Swivel arm bracket ... 7s. 6d. " 12-6

Lamp: 250 watt Class B.I Round Bulb Projector. E.S. Cap. (see page 103). ^{12/6}

Beam Angle: Maximum 39°. Minimum 11°.

Effective throw, 15 ft.



PATTERN 27

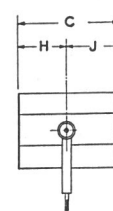
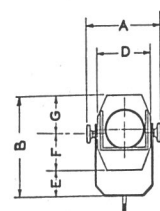
	Ft.	Ins.
A ...	9	$\frac{1}{4}$
B ...	8	$\frac{1}{2}$
C ...	6	$\frac{1}{2}$
D ...	7	
E ...	2	$\frac{1}{2}$
F ...	4	
G ...	2	
H ...	3	
J ...	3	$\frac{1}{2}$

Nett weight of
Lantern, 5 lbs.

PATTERN 45

	Ft.	Ins.
A ...	8	$\frac{1}{2}$
B ...	1	0
C ...	11	$\frac{1}{2}$
D ...	6	
E ...	3	$\frac{1}{2}$
F ...	4	$\frac{1}{2}$
G ...	4	$\frac{1}{4}$
H ...	5	$\frac{1}{4}$
J ...	6	$\frac{1}{2}$

Nett weight of
Lantern, 9 $\frac{1}{2}$ lbs.



Telephone:
Temple Bar 7464 (6 lines).

**STRAND ELECTRIC
AND ENGINEERING CO., LTD.**

FLORAL STREET, COVENT GARDEN, W.C.2

Telegraphic Address:
Spotlite, Rand, London.